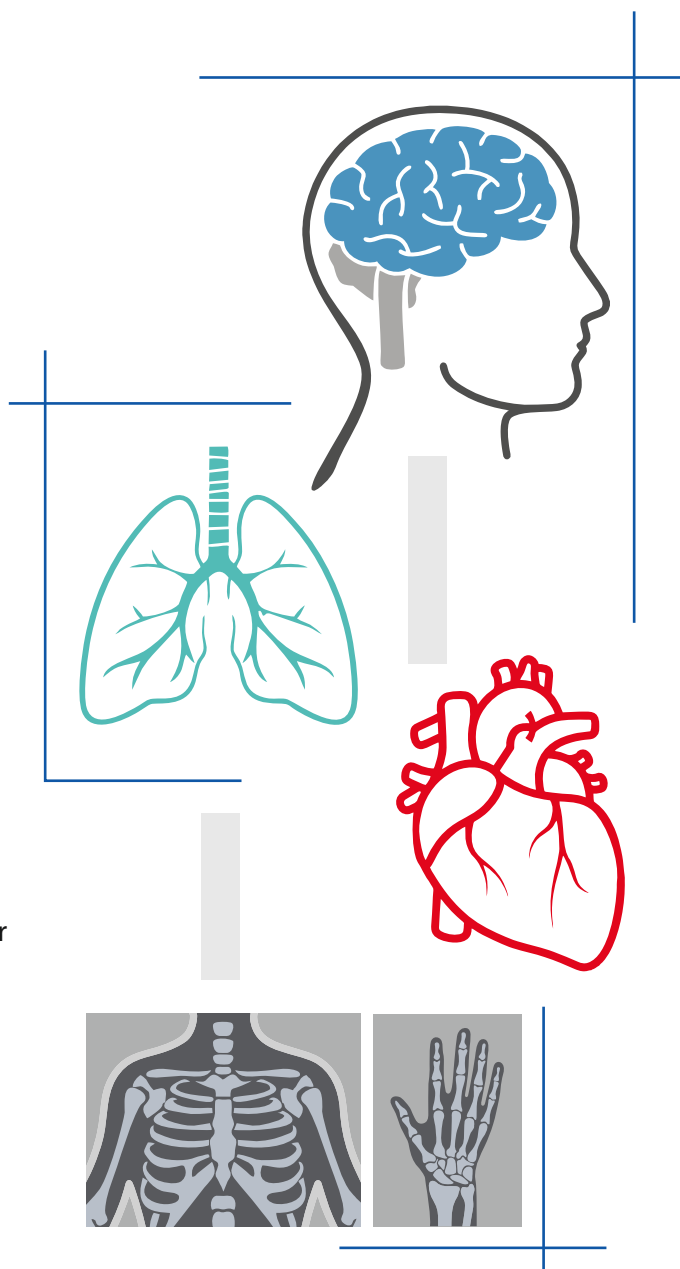




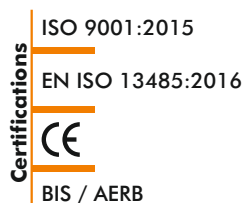
Leading with Innovation
Since 1975

- **Neurology**
EEG, EMG, PSG, TCD
- **Cardiology**
ECG, Holter, Stress Test System (TMT)
- **Patient Monitoring**
Pulse Oximeter, Multi-Parameter Monitor
- **Radiology**
Mobile and Fixed X-ray
- **Surgery**
HF C-arm Image Intensifier
- **Pulmonology**
Portable and PC-based Spirometer
- **In-Vitro Diagnostics**
Biochemistry, Hematology, Urine Strip Analyzer
- **Psychiatry / Physiology**
ECT, Bio-feedback, Polygraph, Physiograph
- **ENT / Audiology**
ENG, Audiometer, BERA, OAE, Tympanometer
- **Healthcare IT Solutions**
Hospital Management System - HMS



PRODUCT CATALOGUE

India's Leading Medical Equipment Manufacturer



- Largest medical equipment sales and service network
- Serving the nation through our in-house design and manufacturing
- Reliable medical products to make healthcare affordable



3 Channel Resting ECG - Vesta 301i

- 12 Leads simultaneous acquisition
- Compact, light weight and portable
- Graphical color TFT for continuous ECG monitoring
- Measurements and interpretation
- 50 patient's result memory storage
- Paper out, charging, low battery and power on indication
- PC connectivity, USB storage and direct A4 ECG printing (optional)

Other Models	Vesta 101	Single Channel ECG with auto measurements
	Vesta 12C	12 Channel 10.1 inch color touch screen TFT display
	Vesta 12EC	12 Channel 8 inch color touch screen TFT display with keypad
	Vesta 121i	12 Channel PC based ECG with interpretation



Cardiac Stress Test System - Vega 204

- PC based cardiac workstation combines exercise and resting ECG
- Simultaneous acquisition and display of 12 leads raw ECG
- Full disclosure for beat-to-beat ECG analysis
- User programmable treadmill protocols
- Duke treadmill score
- Facility to send report via-email using web enabled software
- Equipped with high torque AC motor and digitally control drive
- SunTech Tango M2 automatic NIBP measuring facility (optional)

Other Models	Vega 201	DC treadmill
	Vega 301	Stress test system with wireless data acquisition



Patient Monitoring System - Phoebus P529

- ECG, SpO2 (Nellcor), NIBP (SunTech), EtCO2, IBP, Respiration and Temperature
- 12.1" high resolution color graphical TFT display
- Adult, pediatric and neonatal monitoring
- Arrhythmia detection and graded alarm facility
- Graphical and tabular trend storage
- 4 hrs battery (Li-ion) backup
- Built-in thermal printer
- Wire/Wireless networking capability

Other Models	Phoebus P512	ECG, SpO2 (Nellcor), NIBP, Respiration and Temperature
	Phoebus P515	ECG, SpO2, NIBP, Respiration and Temperature
	Phoebus P311	ECG, NIBP, SpO2 (3 Para Monitor)
	Phoebus P123	EtCO2 Monitor (Single Para Monitor)
	Phoebus P121	Pulse Oximeter (SpO2 - Single Para Monitor)



Spirometer - Helios 702

- High resolution color graphical TFT display
- Built-in thermal printer
- Storage for 2500 patient's data
- FVC, SVC and MVV tests
- Evaluation of 51 vital parameters with interpretation
- Paper out, charging, low battery and power on indication
- Facility to download data to PC
- Real time pulse rate and SpO2 monitoring (optional)

Other Model	Helios 401	PC based spirometry system with advanced software
--------------------	------------	---



Portable EEG - Maximus 32

- Compact, portable and light weight
- 32 channel raw data acquisition
- USB powered with plug and play facility
- Artifact free recording in any environment
- Advanced brain mapping software
- Reports can be e-mailed or transferred across a network
- EEG synchronous video recording (optional)
- Real time pulse rate and SpO2 (Nellcor) monitoring (optional)

Other Models	Maximus 24	24 Channel portable EEG system
	Super Spec 32	32 Channel PC based EEG system
	Brain View Plus 24	24 Channel PC based EEG system



EMG.NCV/EP - Aleron 201

- EMG replay with audio facility
- Auto latency/amplitude marking with user selectable measurements
- Nerve conduction studies
- Evoked potentials
- Left/Right side comparison on a single screen
- SEP, VEP, BERA, 40Hz, MLR, LLR and P-300

Other Models	Aleron 401	4 Channel PC based EMG system
	Salus	2 and 4 Channel Portable EMG system
	Salus NCV	2 Channel Portable NCV.EMG system



Biochemistry Analyzer - Analytica 705

- 48 direct test keys on board
- Calibration graph storage
- Create various test profiles
- High resolution color graphical TFT display
- On board key to rinse flow cell
- 1,00,000 test results storage
- Real time absorbance graph on screen
- LIS software for data management (optional)

IVD (In-vitro diagnostic)	Analytica 705i	Biochemistry analyzer with dry bath incubator
	Hestia 360	3 part differential automated Blood Cell Counter
	Orina EC	Urine strip analyzer with color display

Audiometer - Hermes D

- Compact and light weight
- Normal, pulsed, continuous and warble tone
- Air conduction and bone conduction audiometry
- Tone decay
- Narrow and speech band masking
- Digital calibration
- High quality headphones

ENT/Audiology	Hermes	PC based audiometer
	Gladius	PC based ENG (Electronystagmograph)
	Tympanica	Portable tympanometer
	Medulla 201	2 Channel BERA (ABR) system
	Medulla 202	2 Channel BERA (ABR) portable system



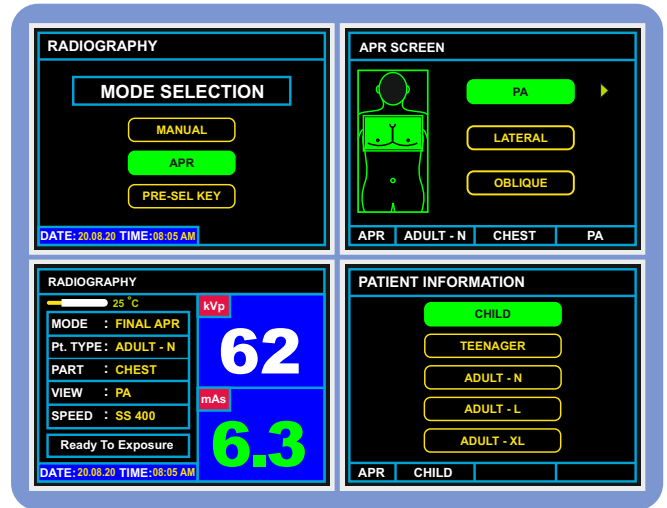
Medical Imaging Device



Mobile High Frequency X-ray - HFX 3.5P

3.5 kW mobile X-ray, color graphical TFT display, APR with soft touch keypad

HFX 3.5E 3.5 kW mobile X-ray, alphanumeric display with soft touch keypad



Anatomical Programmed Radiography (APR)



Fixed X-ray - MDX-500

500mA high powered machine with rotating anode X-ray tube

MDX-300	300mA fixed machine with rotating anode X-ray tube
MDX-100R	100mA fixed machine with rotating anode X-ray tube
MDX-100FS	100mA fixed machine with stationary anode X-ray tube



HF Mobile C-arm

Corus 9	HF X-ray generator with stationary anode tube head, 9" I.I., 100 frames image memory and 2 monitors
Corus 9 HD	HF X-ray generator with stationary anode tube head, 9" I.I., 100 frames image memory and 29" HD LED
Corus 9 HD 1K	HF X-ray generator with stationary anode tube head, 9" I.I., 1K x 1K imaging chain, 25000 frames image memory and 32" HD LED

Since R&D is a continuous process, to make changes in product features, specifications, aesthetics and/or to discontinue the same at any time without notice or obligation



Certified ISO 9001:2015, EN ISO 13485:2016 company



Recorders & Medicare Systems (P) Ltd.

Plot No. 11, HSIIDC I.T. Park, Sector 22, Panchkula - 134114, Haryana, INDIA

Mobile: +91-9216001899, Ph.: +91-172-2564196, 2565196,

www.rmsindia.com, exports@rmsindia.com

Unit II: Plot No. 9, Industrial Area, Phase 1, Panchkula - 134113, Haryana, INDIA