

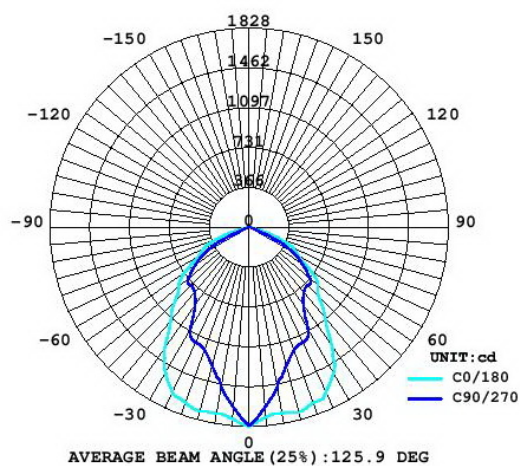
LUMINAIRE PHOTOMETRIC TEST REPORT

Report number:

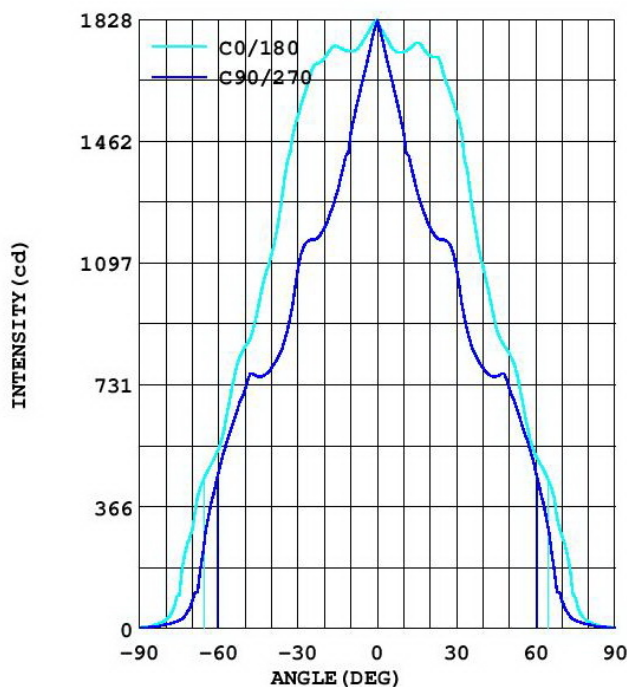
MANUFACTURER:	Address:	
NAME:	TYPE:	WEIGHT:
SPECIFICATION:	DIMENSION:	SERIAL No.:

DATA OF LAMP		Imax(cd)	1828	S/MH(C0/180)	1.24
MODEL	50W	EFFICIENCY(%)	100.0	S/MH(C90/270)	0.85
NOMINAL POWER(W)	50	TOTAL FLUX(lm)	4235.7	Voltage(V)	219.5
RATED VOLTAGE(V)	220	EFFICIENCY(lm/W)	85.5	Current(A)	0.237
NOMINAL FLUX(lm)	4235.7	η up(%)	0.0	Power(W)	49.54
LAMPS QUANTITY	1	η down(%)	100.0	Power Factor(PF)	0.951
TEST VOLTAGE(V)	219.5	Effective Flux(lm)	3430.6	EEl	0.197

LUMINOUS INTENSITY DISTRIBUTION



LUMINOUS INTENSITY DISTRIBUTION



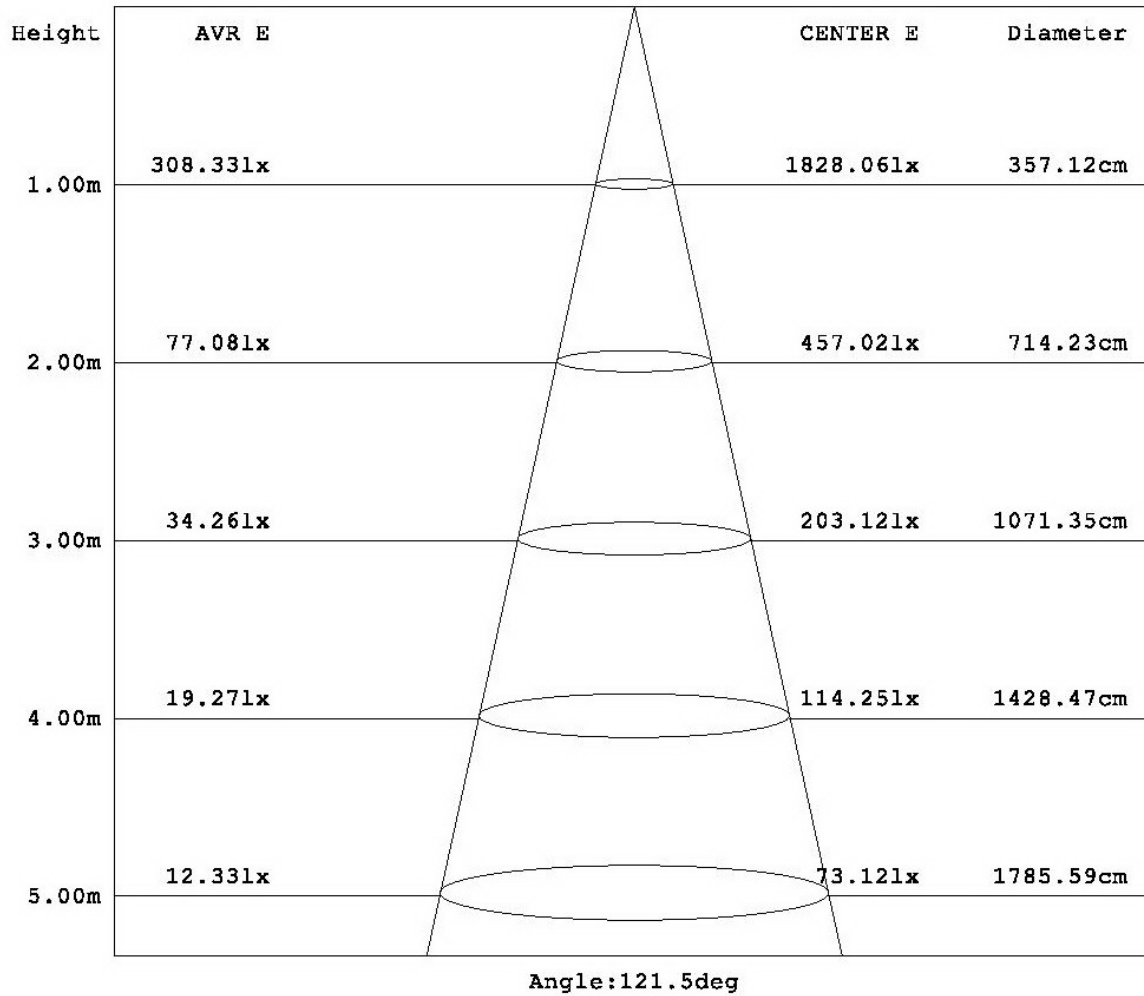
Test System:HOPOO HPG1800
 Temperature:25.3DEG
 Operators:
 Test Date:2015年06月15日

Test Set: 5.0deg/s C-Gamma (TYPE C)
 Humidity:65.0%
 Test Distance:7.930 m
 Remarks:

AVERAGE AND CENTER E Figure

Report number:

MANUFACTURER:	Address:	
NAME:	TYPE:	WEIGHT:
SPECIFICATION:	DIMENSION:	SERIAL No.:



Test System:HOPOO HPG1800
 Temperature:25.3DEG
 Operators:
 Test Date:2015年06月15日

Test Set: 5.0deg/s C-Gamma (TYPE C)
 Humidity:65.0%
 Test Distance:7.930 m
 Remarks:

ZONAL FLUX DIAGRAM

Report number:

MANUFACTURER:	Address:	
NAME:	TYPE:	WEIGHT:
SPECIFICATION:	DIMENSION:	SERIAL No.:

γ	C0	C45	C90	C135	C180	C225	C270	C315	γ	Φ zone	Φ total
5.0	1767	1724	1661	1700	1748	1700	1661	1724	0- 5	41.90	41.90
10.0	1733	1612	1492	1577	1730	1577	1492	1612	5- 10	118.0	159.9
15.0	1745	1486	1313	1443	1758	1443	1313	1486	10- 15	183.4	343.3
20.0	1711	1344	1202	1305	1718	1305	1202	1344	15- 20	237.7	581.1
25.0	1671	1245	1166	1221	1668	1221	1166	1245	20- 25	284.6	865.8
30.0	1538	1131	1080	1108	1547	1108	1080	1131	25- 30	321.8	1188
35.0	1356	1058	865.9	1036	1319	1036	865.9	1058	30- 35	336.4	1524
40.0	1122	983.1	781.8	931.5	1086	931.5	781.8	983.1	35- 40	336.2	1860
45.0	967.5	860.9	755.1	814.4	904.5	814.4	755.1	860.9	40- 45	331.8	2192
50.0	846.6	744.7	719.6	707.5	825.6	707.5	719.6	744.7	45- 50	322.4	2515
55.0	722.2	562.0	604.9	529.1	678.7	529.1	604.9	562.0	50- 55	297.1	2812
60.0	540.9	441.5	472.0	426.9	519.8	426.9	472.0	441.5	55- 60	242.9	3055
65.0	460.0	361.7	292.0	335.3	441.7	335.3	292.0	361.7	60- 65	202.4	3257
70.0	297.3	254.4	82.00	216.3	276.6	216.3	82.00	254.4	65- 70	142.9	3400
75.0	101.8	60.68	24.14	38.17	93.69	38.17	24.14	60.68	70- 75	70.33	3471
80.0	26.09	10.37	11.82	7.609	20.94	7.609	11.82	10.37	75- 80	15.58	3466
85.0	7.609	1.635	4.401	0.880	5.596	0.880	4.401	1.635	80- 85	4.122	3490
90.0	3.270	0.314	2.452	0.252	3.207	0.252	2.452	0.314	85- 90	1.144	3492
95.0									90- 95		
100.0									95-100		
105.0									100-105		
110.0									105-110		
115.0									110-115		
120.0									115-120		
125.0									120-125		
130.0									125-130		
135.0									130-135		
140.0									135-140		
145.0									140-145		
150.0									145-150		
155.0									150-155		
160.0									155-160		
165.0									160-165		
170.0									165-170		
175.0									170-175		
180.0									175-180		
DEG	LUMINOUS INTENSITY:cd									UNIT:lm	

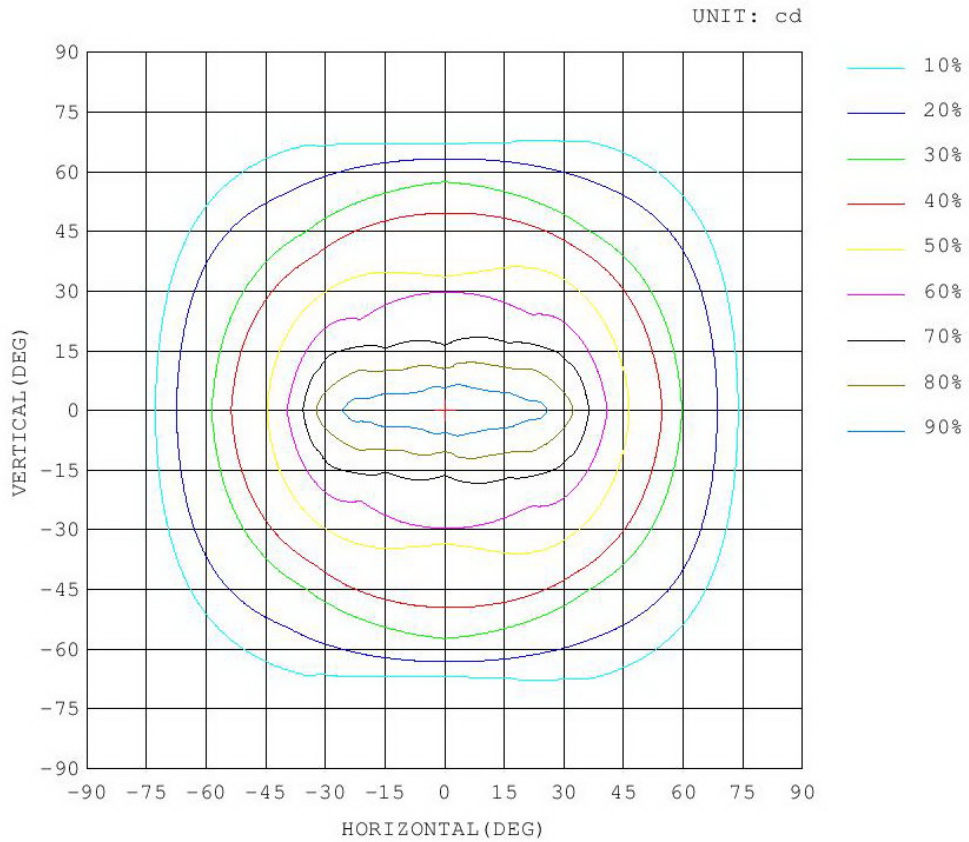
Test System:HOPOO HPG1800
 Temperature:25.3DEG
 Operators:
 Test Date:2015年06月15日

Test Set: 5.0deg/s C-Gamma (TYPE C)
 Humidity:65.0%
 Test Distance:7.930 m
 Remarks:

ISOCANDELA DIAGRAM

Report number:

MANUFACTURER:	Address:	
NAME:	TYPE:	WEIGHT:
SPECIFICATION:	DIMENSION:	SERIAL No.:



Test System:HOPOO HPG1800
Temperature:25.3DEG
Operators:
Test Date:2015年06月15日

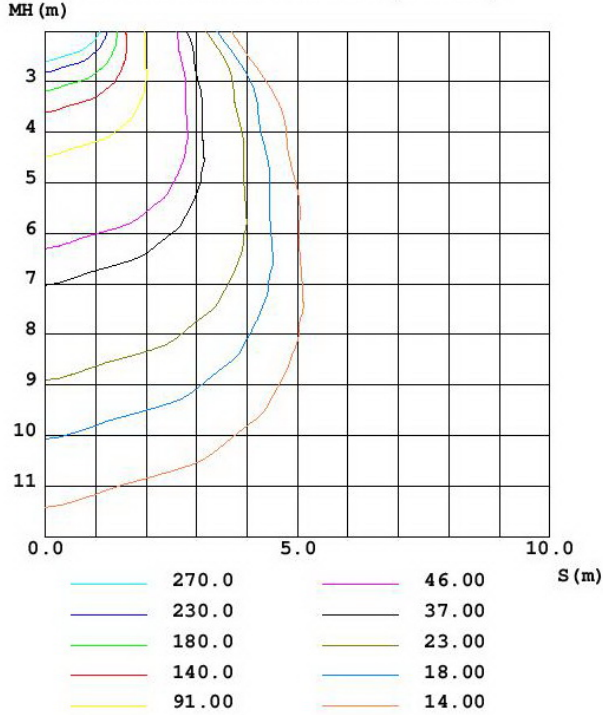
Test Set: 5.0deg/s C-Gamma (TYPE C)
Humidity:65.0%
Test Distance:7.930 m
Remarks:

ISOLUX DIAGRAM

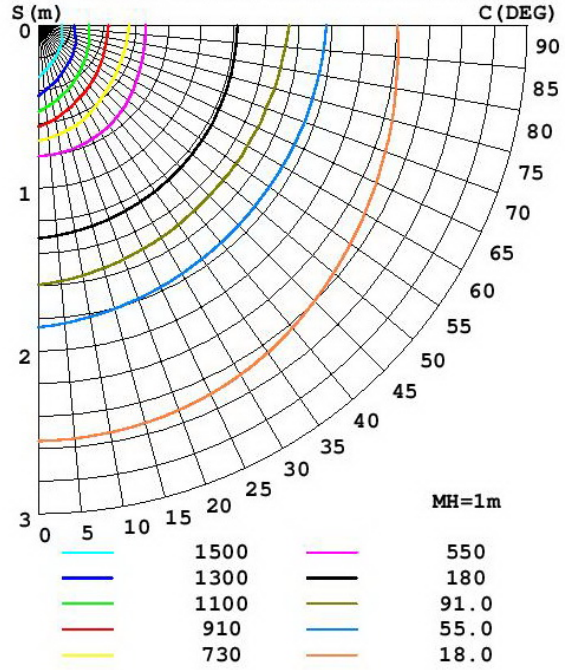
Report number:

MANUFACTURER:	Address:	
NAME:	TYPE:	WEIGHT:
SPECIFICATION:	DIMENSION:	SERIAL No.:

C0 PLANE ISOLUX DIAGRAM (UNIT:lx)



PLANAR ISOLUX DIAGRAM (UNIT:lx)



Test System:HOPOO HPG1800
 Temperature:25.3DEG
 Operators:
 Test Date:2015年06月15日

Test Set: 5.0deg/s C-Gamma (TYPE C)
 Humidity:65.0%
 Test Distance:7.930 m
 Remarks:

LUMINOUS DISTRIBUTION INTENSITY DATA

Report number:

MANUFACTURER:	Address:	
NAME:	TYPE:	WEIGHT:
SPECIFICATION:	DIMENSION:	SERIAL No.:

UNIT: cd

C (DEG) \ y (DEG)	0	45	90	135	180	225	270	315
0.0	1828	1826	1824	1816	1817	1816	1824	1826
5.0	1767	1724	1661	1700	1748	1700	1661	1724
10.0	1733	1612	1492	1577	1730	1577	1492	1612
15.0	1745	1486	1313	1443	1758	1443	1313	1486
20.0	1711	1344	1202	1305	1718	1305	1202	1344
25.0	1671	1245	1166	1221	1668	1221	1166	1245
30.0	1538	1131	1080	1108	1547	1108	1080	1131
35.0	1356	1058	866	1036	1319	1036	866	1058
40.0	1122	983	782	932	1086	932	782	983
45.0	968	861	755	814	905	814	755	861
50.0	847	745	720	708	826	708	720	745
55.0	722	562	605	529	679	529	605	562
60.0	541	442	472	427	520	427	472	442
65.0	460	362	292	335	442	335	292	362
70.0	297	254	82.0	216	277	216	82.0	254
75.0	102	60.6	24.1	38.1	93.6	38.1	24.1	60.6
80.0	26.0	10.3	11.8	7.60	20.9	7.60	11.8	10.3
85.0	7.60	1.63	4.40	0.88	5.59	0.88	4.40	1.63
90.0	3.27	0.31	2.45	0.25	3.20	0.25	2.45	0.31

Test System:HOPOO HPG1800
 Temperature:25.3DEG
 Operators:
 Test Date:2015年06月15日

Test Set: 5.0deg/s C-Gamma (TYPE C)
 Humidity:65.0%
 Test Distance:7.930 m
 Remarks: