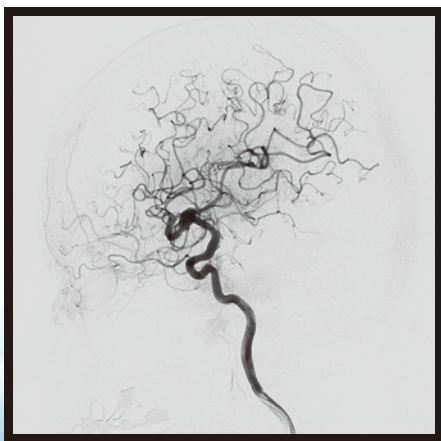
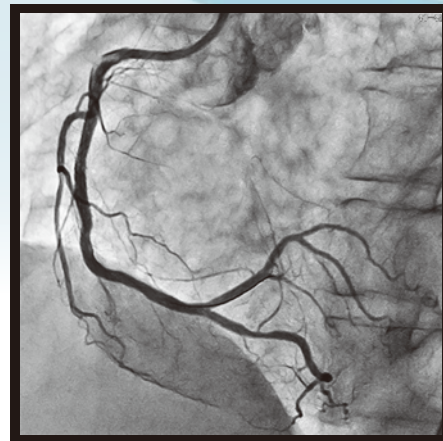
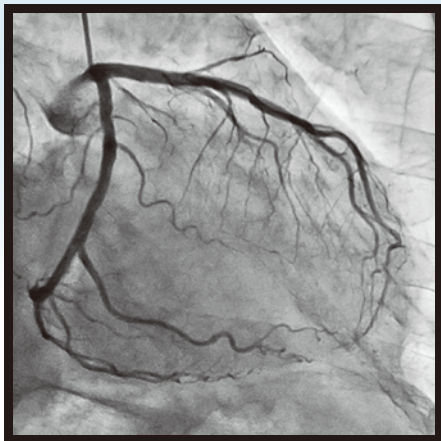


SCORE PRO Advance

Trinias Real-Time Image Processing Unit

The SCORE PRO high-speed image processing unit, which was developed based on the concept of low exposure and high image quality, has now been reborn as the SCORE PRO Advance, which features a state-of-the-art motion tracking noise reduction function. The resulting high-quality images obtained by using Shimadzu's real-time image processing technology provide support for advanced intervention procedures.



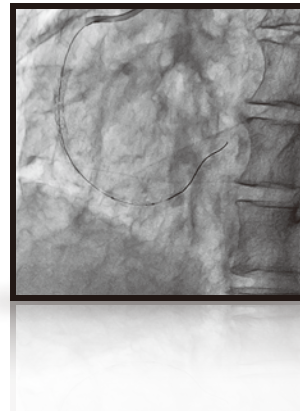
Fluoroscopy with High Image Quality

The ideal fluoroscopy for interventions is fluoroscopy where the tip of the guide wires and catheters can be clearly viewed without any blurring or embedded noise. Thanks to its motion tracking noise reduction function, the SCORE PRO Advance achieves higher image quality than ever before.

7.5fps Fluoro

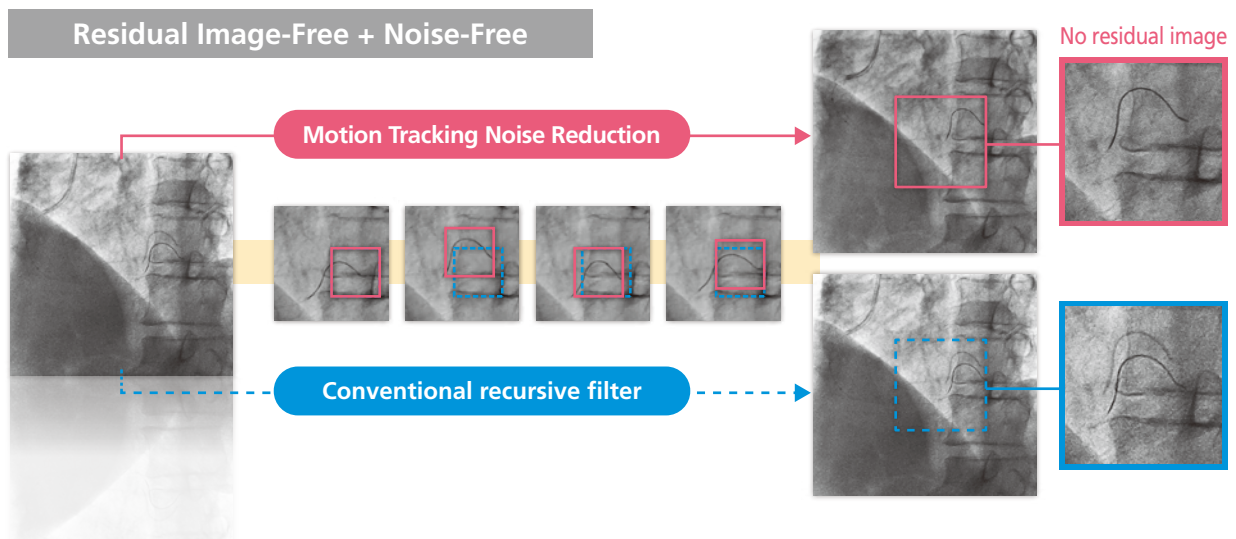


15fps Rad



Motion Tracking Noise Reduction

For time-series video images that involve motion, motion is detected for each local area (block) of the object being exposed (block mapping). The blocks are then aggregated by aligning their positions to reduce noise without causing any residual image.



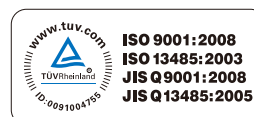
Founded in 1875, Shimadzu Corporation, a leader in the development of advanced technologies, has a distinguished history of innovation built on the foundation of contributing to society through science and technology. We maintain a global network of sales, service, technical support and applications centers on six continents, and have established long-term relationships with a host of highly trained distributors located in over 100 countries. For information about Shimadzu, and to contact your local office, please visit our Web site at www.shimadzu.com



Shimadzu Corporation

Headquarters

1, Nishinokyo-Kuwabara-cho, Nakagyo-ku, Kyoto 604-8511, Japan
<http://www.shimadzu.com>



Shimadzu Corporation Medical Systems Group has been certified by TÜV Rheinland as a manufacturer of medical equipment and systems in compliance with ISO9001:2008 Quality Management Systems and ISO13485:2003 Medical Equipment Quality Management Systems.

Remarks:

- Every value in this catalogue is a standard value, and it may vary a little from the actual at each site.
- The appearances and specifications are subject to change for reasons of improvement without notice.
- Certain configurations may not be available pending regulatory clearance. Contact your Shimadzu representative for information on specific configurations.
- Before operating this system, you should first thoroughly review the Instruction Manual.