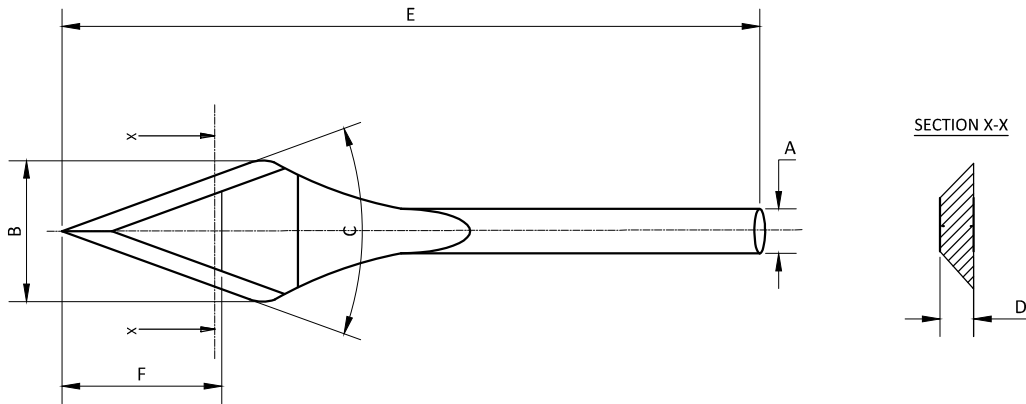


SLIT KNIVES SB-03 (Keratome)



NOTE :

- DWG Codes
 (1) A-Wire diameter.
 (2) B-Width of the blade.
 (3) C-Profile angle.
 (4) D-Thickness of the blade.
 (5) E-Prenotch length.
 (NORMAL - Refer Table)
 (SAFETY - Refer Table)
 (EDGE - Refer Table)
 (6) F-Incision Marking length.
 (NORMAL - Applicable)
 (SAFETY- Applicable)
 (EDGE - Not Applicable)

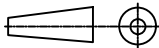
PRODUCT DETAIL

SL NO	PRODUCT NAME	PRODUCT CODE	CRITICAL PARAMETERS					
			A	B	C	D	E	F
01	Slit Angled SB 1.0mm	KR 10	0.49	1.0	40°	0.15	23.00	NA
02	Slit Angled SB 1.2mm	KR 12	0.52	1.2				
03	Slit Angled SB 1.4mm	KR 14	0.57	1.4				
04	Slit Angled SB 1.6mm	KR 16	0.60	1.6				
05	Slit Angled SB 1.8mm	KR 18	0.64	1.8				
06	Slit Angled SB 2.0mm	KR 20	0.68	2.0				
07	Slit Angled SB 2.2mm	KR 22	0.72	2.2				2.00
08	Slit Angled SB 2.4mm	KR 24	0.76	2.4				
09	Slit Angled SB 2.5mm	KR 25	0.78	2.5				
10	Slit Angled SB 2.6mm	KR 26	0.78	2.6				
11	Slit Angled SB 2.65mm	KR 265	0.78	2.65				
12	Slit Angled SB 2.75mm	KR 275	0.81	2.75				
13	Slit Angled SB 2.8mm	KR 28	0.81	2.8				
14	Slit Angled SB 2.85mm	KR 285	0.81	2.85				
15	Slit Angled SB 3.0mm	KR 30	0.85	3.0				
16	Slit Angled SB 3.2mm	KR 32	0.89	3.2				
TOL ±	NA	NA	0.02	0.10	2°	0.02	0.50	0.10

SCALE: NTS	DRAWN	DATE	CHECKED	DATE	APPROVED	DATE
All Dimension are in mm	AMARESH	27-05-2014	PAVAN	27-05-2014	AJIT SHAH	27-05-2014



PROJECTION



ITEM NAME:

SLIT ANGLED SB

MATERIAL :

SS-420 DVM

COMPANY NAME: SHAH EYE CARE PVT LTD

DWG NO: SECLP_KR_03

Address: **SHAH EYE CARE PVT. LTD**
 Plot No. 8 & 9, Karur Industrial
 Area P B. Road Davangere-577006
 Karnataka, India.

DWG REV: 04

SHEET NO : 1 OF 1

Rev No	Date	Description	Appd
04	25-11-2023	Prenotch length modified	Purush
03	01-03-2023	Prenotch length & incision marking length updated	Purush
02	30-08-2021	Profile angle included	Purush
01	25-03-2021	New plant address updated	Purush
00	27-05-2014	Initial Release	Ajit Shah

REVISIONS