



Integra
Ultrasonics
CUSA[®] Excel+
Products Catalogue
Single use and reusable tips

Ordering and Warranty Information

Pricing :

Prices stated in specific written quotations are firm for thirty days from the date given, and are otherwise subject to change without prior notice. Pricing terms stated on written agreements are governed by such agreements.

Minimum Order Requirements :

Minimum order requirement is €250(a €20 handling charge will be added to any order under €250).

Administrative fees:

For each order, an administrative fee amounting to €25, GBP25 or CHF30 will be applied.

Ordering Procedure :

A written purchase order on the customer's form may be requested for purchases of Integra LifeSciences products.

Acceptance of Orders :

Orders are accepted upon approval by Integra Customer Service.

Return Policy :

- Authorization from customer service must be obtained prior to returning product.
- Sterile product must be returned in unopened, undamaged carton, packed to prevent damage.
- Non-sterile product must be returned in unused saleable condition in original package.
- Custom or special order products will not be accepted for credit.
- Credit will be issued for goods returned prior to ninety days from ship date with a 20% restocking charge. This assumes that the products returned are not damaged and can be verified to have not been used or opened.

Customer Services:

International

+33 (0) 437 47 59 50
+33 (0) 437 47 59 25 (Fax)
csemea@Integralife.com

France

+33 (0) 437 47 59 10
+33 (0) 437 47 59 29 (Fax)
custsvcfrence@Integralife.com

Benelux

+32 (0) 2 257 4130
+32 (0) 2 253 2466 (Fax)
custsvcbenelux@integralife.com

United Kingdom

+44 (0) 1264 345 780
+44 (0) 1264 363 782 (Fax)
custsvcsuk@integralife.com

Germany

+49 (0) 2102 5535 6200
+49 (0) 2102 5536 636 (Fax)
custsvcgermany@integralife.com

Switzerland

+41 22 721 23 30
+41 22 721 23 99 (Fax)
custsvcsuisse@integralife.com

INTEGRA Warranty for CUSA® Excel+ Ultrasonic Surgical Aspirator

1. Warranty.

INTEGRA LIFESCIENCES CORPORATION and its wholly owned subsidiaries («INTEGRA») warrant to INTEGRA authorized distributors and the original purchaser only that each new INTEGRA CUSA® Excel+ Ultrasonic Surgical Aspirator (hereinafter the Equipment or the product) is free from manufacturing defects in material and workmanship under normal use and service for a period of one (1) year (except as otherwise expressly provided as to accessory items) from the date of invoice by INTEGRA (or its authorized distributor) to the original purchaser, but in no event beyond the expiration date stated on any product labeling (hereinafter the Warranty Period). For purposes of products sold by INTEGRA through an authorized distributor of INTEGRA, «original purchaser» shall include the purchaser of INTEGRA products to whom the distributor first sells the product. The original purchaser is hereinafter referred to as Customer.

- 1.1. **Coverage.** During the Warranty Period, INTEGRA shall provide free-of-charge service and maintenance consistent with the provisions of Section 3 of this Warranty, so that the Equipment conforms with the specifications defined in the CUSA® Excel+ Ultrasonic Surgical Aspirator Operator's Manual, as such Operator's Manual may be modified by INTEGRA from time to time (the "Specifications").
- 1.2. **Exclusions.** The Warranty shall not apply in any manner to service or maintenance of the Equipment, or to replacement of its parts, with respect to :
 - i. use of Equipment with any tips and flues other than those manufactured by INTEGRA LifeSciences;
 - ii. defects arising out of materials or parts provided, modified or designed by anyone other than an authorized INTEGRA service agent (the INTEGRA "Service Agent");
 - iii. defects emanating from improper or negligent installation, storage or use of the Equipment or any component thereof, including but

- not limited to operating the Equipment not in accordance with instructions provided in the Operator's Manual;
- iv. defects arising from improper or negligent cleaning or sterilization methods or improper maintenance of the Equipment;
- v. defects resulting from repairs or service of the Equipment provided other than by INTEGRA or its authorized representatives;
- vi. defects arising from accidental damage to the Equipment, acts of God, electrical power damage, equipment malfunction, unusual stress, unreasonable operating procedures or abnormal or extreme operating conditions;
- vii. and normal wear and tear.

2. Service, Repairs and Replacement.

- 2.1. **Service and Repairs.** All service and repairs covered by this Warranty may be referred to hereinafter as "in-warranty repairs", and all service and repairs not covered by this Warranty may be referred to as "out-of-warranty repairs". INTEGRA's sole obligation for in-warranty repairs shall be to make all necessary adjustments and repairs in accordance with this Warranty. INTEGRA shall charge Customer at INTEGRA standard rates for any out-of-warranty repair performed by INTEGRA.
- 2.2. **Equipment Replacement.** The defective Equipment or part thereof that is replaced in accordance with the Warranty shall be the property of INTEGRA. INTEGRA reserves the right to fill spare parts requests using refurbished sub-assemblies provided that such sub-assemblies are functionally equivalent to new sub-assemblies and carry the same warranty as the replaced sub-assemblies.

2.3. Notification. In order to avail itself of its rights under the Warranty, Customer or INTEGRA authorized distributors, must immediately notify INTEGRA of any defects and provide INTEGRA every opportunity to inspect and remedy defects.

3. Repair Parts and Services.

3.1. Included under the Warranty are the following services :

3.1.1. *Consoles.* INTEGRA shall, if possible, perform on-site repair of consoles or replace a console by a new or refurbished console (at the discretion of INTEGRA), as the case may be, and where not possible INTEGRA shall arrange and pay to ship the affected Equipment to the designated repair facility, and shall repair the affected Equipment.

3.1.2. *Handpieces.* INTEGRA shall replace any defective handpieces covered by the Warranty by a new or refurbished handpiece (at the discretion of INTEGRA) that shall carry the same warranty as the original equipment (an "Exchange Handpiece").

3.2. *Modifications to Covered Equipment.* From time to time, at its sole discretion, INTEGRA may propose modifications to the covered Equipment and to the Specifications for the Equipment. Subject to Customer's approval and at its sole expense, the Customer may request INTEGRA to make such modifications to the covered Equipment and to the Specifications. INTEGRA shall make such modifications for the Customer, which modifications may include the installation of new parts in the Equipment, at a price equal to the then-current list price for such modifications, as such list price is established by INTEGRA in its sole discretion.

4. Quality Control.

4.1. Customer shall maintain reasonable standards of quality control, operations, procedures, safety testing and inspection of Equipment to ensure that unnecessary service or maintenance is not required hereunder.

4.2. Customer shall provide a technical counterpart to INTEGRA's Service Agent for assistance in INTEGRA's telephonic diagnosis of the malfunction with the Equipment. Customer shall reasonably accept INTEGRA's determination whether a repair or service is an in-warranty repair or an out-of-warranty repair.

5. Limitation of Liability.

5.1. INTEGRA's sole responsibility under the warranties described in Section 1 shall be repair or replacement, at INTEGRA's sole discretion at INTEGRA's expense, subject to the terms of this warranty and applicable agreements. THE WARRANTIES DESCRIBED IN SECTION 1 HEREOF ARE EXCLUSIVE AND ARE GIVEN AND ACCEPTED IN LIEU OF ALL OTHER WARRANTIES OF INTEGRA OR ITS SERVICE AGENTS WITH RESPECT TO THE QUALITY, PERFORMANCE AND OPERATION OF THE EQUIPMENT, WRITTEN OR ORAL, EXPRESS OR IMPLIED, AND WHETHER OR NOT ATTRIBUTABLE TO SERVICE PERFORMED PURSUANT TO THE WARRANTY. ALL OTHER REPRESENTATIONS OR WARRANTIES OF INTEGRA OR ITS REPRESENTATIVES, EXPRESS OR IMPLIED, WITH RESPECT TO THE EQUIPMENT OR THE SERVICES, DIAGNOSIS, ADVICE, ASSISTANCE OR PARTS TO BE TENDERED PURSUANT TO THE WARRANTY, INCLUDING, WITHOUT LIMITATION, THOSE OF MERCHANTABILITY AND FITNESS FOR A PARTICULAR PURPOSE, ARE HEREBY EXPRESSLY DISCLAIMED. IN NO EVENT SHALL INTEGRA, ITS ASSIGNEES OR SERVICE AGENTS BE LIABLE FOR LOSS OF USE, REVENUE OR PROFIT OR ANY OTHER INDIRECT, INCIDENTAL, EXEMPLARY, CONSEQUENTIAL, SPECIAL OR OTHER DAMAGES, WHETHER ARISING IN CONTRACT OR IN TORT, BY VIRTUE OF THE WARRANTY OR ANY PERFORMANCE OR BREACH BY INTEGRA, ITS ASSIGNEES OR SERVICE AGENTS HEREUNDER OR PURSUANT HERETO.

5.2. Customer agrees that, notwithstanding the technical assistance provided pursuant to the Warranty by INTEGRA or its representatives, Customer shall be fully and solely responsible for all treatments performed or attempted with the Equipment. INTEGRA MAKES NO REPRESENTATION OR WARRANTY AS TO THE EFFICACY OF THE EQUIPMENT OR OF THE TECHNICAL ASSISTANCE

TO BE RENDERED BY INTEGRA, ITS ASSIGNEES OR SERVICE AGENTS, FOR PURPOSES OF THE PARTICULAR TREATMENT THAT CUSTOMER INTENDS TO PERFORM FOR THIRD PARTIES. Moreover, INTEGRA disclaims any liability with respect to the efficacy of the Equipment or of said technical assistance or with respect to any claims by third parties related to any treatment performed by Customer.

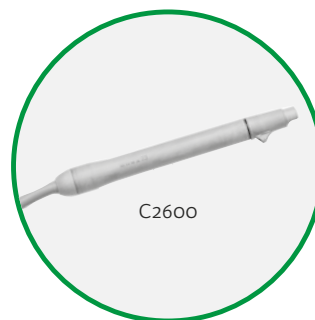
5.3. THIS INTEGRA LIMITED WARRANTY IS EXCLUSIVE AND IN LIEU OF ALL OTHER WARRANTIES, EXPRESS OR IMPLIED, AND OF ALL OTHER OBLIGATIONS OR LIABILITIES ON INTEGRA'S PART OR THE PART OF ITS DISTRIBUTORS, AND INTEGRA NEITHER ASSUMES NOR AUTHORIZES ANY REPRESENTATIVE OR OTHER PERSON TO ASSUME FOR IT ANY OTHER LIABILITY IN CONNECTION WITH INTEGRA'S PRODUCTS. INTEGRA DISCLAIMS ALL OTHER WARRANTIES, EXPRESS OR IMPLIED INCLUDING ANY IMPLIED WARRANTY OF MERCHANTABILITY OR OF FITNESS FOR A PARTICULAR PURPOSE OR APPLICATION OR WARRANTY OF QUALITY AS WELL AS ANY EXPRESS OR IMPLIED WARRANTY TO PATIENTS. No warranty or guarantee may be created by any act or statement nor may this Standard Warranty be modified in any way, except as a result of a writing signed by an officer of INTEGRA. These limitations on the creation or modification of this warranty may not be waived or modified orally or by any conduct.

5.4. IN NO EVENT SHALL INTEGRA AUTHORIZED DISTRIBUTORS BE LIABLE TOWARDS CUSTOMER FOR ANY INCIDENTAL, INDIRECT, CONSEQUENTIAL OR PUNITIVE DAMAGES IN CONNECTION WITH THE ACQUISITION OR USE OF ANY INTEGRA PRODUCT. Further, this warranty shall not apply to, and INTEGRA authorized distributors shall not be responsible towards Customer for, any loss, arising in connection with the purchase or use of any INTEGRA product that has been repaired by anyone other than an authorized INTEGRA service representative or altered in any way so as to affect its stability or reliability, or which has been subject to misuse, negligence or accident, or which has been used otherwise than in accordance with the instructions furnished by INTEGRA. THIS INTEGRA DISTRIBUTOR LIMITED WARRANTY IS EXCLUSIVE AND IN LIEU OF ALL OTHER WARRANTIES TOWARDS CUSTOMER, EXPRESS OR IMPLIED, AND OF ALL OTHER OBLIGATIONS OR LIABILITIES TOWARDS CUSTOMER ON INTEGRA AUTHORIZED DISTRIBUTOR'S PART. INTEGRA AUTHORISED DISTRIBUTORS DISCLAIM ALL OTHER WARRANTIES TOWARDS CUSTOMER, EXPRESS OR IMPLIED INCLUDING ANY IMPLIED WARRANTY OF MERCHANTABILITY OR OF FITNESS FOR A PARTICULAR PURPOSE OR APPLICATION OR WARRANTY OF QUALITY AS WELL AS ANY EXPRESS OR IMPLIED WARRANTY TO PATIENTS OR OTHER THIRD PARTIES.

5.5. Force Majeure. Notwithstanding anything to the contrary herein contained, if the performance of the Warranty by INTEGRA, INTEGRA authorized distributors, or Customer or any obligation of INTEGRA, INTEGRA authorized distributors, or Customer hereunder is prevented, restricted or interfered with by reason of fire, explosion, act of God, labor disputes or accidents affecting performance under the Warranty, or war, mobilization, civil commotions, blockade or embargo, or any future law, regulation, ordinance or requirement of any government or regulatory agency or any other act, whatsoever similar to those above enumerated, or any other circumstance being beyond the reasonable control of INTEGRA, INTEGRA authorized distributors, or Customer, then and in that event INTEGRA, INTEGRA authorized distributors, or Customer, as the case may be, shall promptly notify the other party hereto of the difficulties resulting therefrom, and any of the foregoing events shall excuse any performance required under the Warranty.

Table of Content	4
Ordering and Warranty Information	2-3
Recommended Starting Sets	5
23 kHz Tips	6
36 kHz Tips	7
Specialty Tips	8
Handpieces	9
Torquing Accessories	9
Manifold Tubing	9
Electrosurgery Module - CEM™ Nosecone	9
Accessories	10
Replacement Parts	10
Indications and contraindications	11

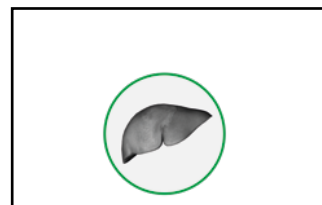
Recommended Starting Sets



C2600



C2602



Catalog No.	Description	Quantity
CUSAEXCEL9	CUSA® Excel+ Console, footswitch, contamination guard	1
C2602	36 kHz Straight Handpiece	2
C2636	36 kHz Sterilization Case	2
C5602	36 kHz Sterile Torque Wrench	1 box 6
C5636	36 kHz Reusable Torque Base	2
C0005	Contamination Guard	1 box 2
C3601	36 kHz Manifold Tubing	1 box 6
C4611S	36 kHz Curved Extended MicroTip™ ultrasonic surgical tip and flue	1 box 4
C4614S	36 kHz Curved Extended Standard tip and flue	1 box 4

Catalog No.	Description	Quantity
CUSAEXCEL9	CUSA® Excel+ Console, footswitch, contamination guard	1
C2600	23 kHz Straight Handpiece	2
C2623	23 kHz Sterilization Case	2
C5601	23 kHz Sterile Torque Wrench	1 box 6
C5623	23 kHz Reusable Torque Base	2
C0005	Contamination Guard	1 box 2
C3600	23 kHz Manifold Tubing	1 box 6
C4601S	23 kHz Standard tip and flue	1 box 4
C4605S	23 kHz MacroTip™ ultrasonic surgical tip and flue	1 box 4

23 kHz Tips

MicroTip™



C4600S

Catalog No.	Sterile	Description	Tip length	Tip ID*	Quantity
Single Use					
C4600S	YES	23 kHz MicroTip™ ultrasonic surgical tip and flue	9,22 cm (3.63 in)	1,57 mm (0.06 in)	BOX 4

Standard Tip Series



C4602S



C4603S



C4601S/ELT

Catalog No.	Sterile	Description	Tip length	Tip ID*	Quantity
Single Use					
C4601S	YES	23 kHz Standard Tip, tip and flue	7,98 cm (3.14 in)	1,98 mm (0.08 in)	BOX 4
C4602S	YES	23 kHz Straight Extended Standard Tip, tip and flue	18,38 cm (7.24 in)	1,98 mm (0.08 in)	BOX 4
C4603S	YES	23 kHz Curved Extended Standard Tip, tip and flue	18,38 cm (7.24 in)	1,98 mm (0.08 in)	BOX 4

Reusable (6 times)					
C4601ELT	NO	23 kHz Standard Tip reusable (1 tip / 6 flues)	7,98 cm (3.14 in)	1,98 mm (0.08 in)	EACH 1

MacroTip™



C4605S/ELT

Catalog No.	Sterile	Description	Tip length	Tip ID*	Quantity
Single Use					
C4605S	YES	23 kHz MacroTip™ ultrasonic surgical tip and flue	7,95 cm (3.13 in)	2,64 mm (0.10 in)	BOX 4
Reusable (6 times)					
C4605ELT	NO	23 kHz MacroTip™ ultrasonic surgical tip reusable (1 tip / 6 flues)	7,95 cm (3.13 in)	2,64 mm (0.10 in)	EACH 1

* Inner Diameter

36 kHz Tips



C4606S / C4609S / C4612S



C4607S / C4610S / C4613S



C4608S / C4608ELT / C4611S / C4611ELT / C4614S / C4614ELT

PrecisionTip™ Series

Catalog No.	Sterile	Description	Tip length	Tip ID*	Quantity
Single Use					
C4606S	YES	36 kHz PrecisionTip™ ultrasonic surgical tip and flue	5,64 cm (2.22 in)	1,14 mm (0.05 in)	BOX 4
C4607S	YES	36 kHz Straight Extended PrecisionTip™ ultrasonic surgical tip and flue	12,51 cm (4.92 in)	1,14 mm (0.05 in)	BOX 4
C4608S	YES	36 kHz Curved Extended PrecisionTip™ ultrasonic surgical tip and flue	12,51 cm (4.92 in)	1,14 mm (0.05 in)	BOX 4
Reusable (6 times)					
C4608ELT	NO	36 kHz Curved Extended PrecisionTip™ ultrasonic surgical tip reusable (1 tip / 6 flues)	12,51 cm (4.92 in)	1,14 mm (0.05 in)	EACH 1

MicroTip™ Series

Catalog No.	Sterile	Description	Tip length	Tip ID*	Quantity
Single Use					
C4609S	YES	36 kHz MicroTip™ ultrasonic surgical tip and flue	5,28 cm (2.08 in)	1,57 mm (0.06 in)	BOX 4
C4610S	YES	36 kHz Straight Extended MicroTip™ ultrasonic surgical tip and flue	12,15 cm (4.78 in)	1,57 mm (0.06 in)	BOX 4
C4611S	YES	36 kHz Curved Extended MicroTip™ ultrasonic surgical tip and flue	12,15 cm (4.78 in)	1,57 mm (0.06 in)	BOX 4
Reusable (6 times)					
C4611ELT	NO	36 kHz Curved Extended MicroTip™ ultrasonic surgical tip reusable (1 tip / 6 flues)	12,15 cm (4.78 in)	1,57 mm (0.06 in)	EACH 1

Standard Tip Series

Catalog No.	Sterile	Description	Tip length	Tip ID*	Quantity
Single Use					
C4612S	YES	36 kHz Standard Tip, tip and flue	4,57 cm (1.8 in)	1,98 mm (0.08 in)	BOX 4
C4613S	YES	36 kHz Straight Extended Standard Tip, tip and flue	11,44 cm (4.5 in)	1,98 mm (0.08 in)	BOX 4
C4614S	YES	36 kHz Curved Extended Standard Tip, tip and flue	11,44 cm (4.5 in)	1,98 mm (0.08 in)	BOX 4
Reusable (6 times)					
C4614ELT	NO	36 kHz Curved Extended Standard Tip™, reusable (1 tip / 6 flues)	11,44 cm (4.5 in)	1,98 mm (0.08 in)	EACH 1

* Inner Diameter

Specialty Tips

MicroTip™ Plus



C4615S

Catalog No.	Sterile	Description	Tip length	Tip ID*	Quantity
Single Use					
C4615S	YES	36 kHz MicroTip™ Plus ultrasonic surgical tip and flue	19,27 cm (7.59 in)	1,57 mm (0.06 in)	BOX 4

SaberTip™



C4616S

Catalog No.	Sterile	Description	Tip length	Tip ID*	Quantity
Single Use					
C4616S	YES	36 kHz SaberTip™ ultrasonic surgical tip and flue	11,49 cm (4.53 in)	1,14 mm (0.05 in)	BOX 4

ShearTip™



C4617S/SEA

Catalog No.	Sterile	Description	Tip length	Tip ID*	Quantity
Single Use					
C4617S	YES	36 kHz ShearTip™ ultrasonic surgical tip and flue	11,79 cm (4.64 in)	1,57mm (0.06 in)	BOX 4
C4617SEA	YES	36 kHz ShearTip™ ultrasonic surgical tip and flue	11,79 cm (4.64 in)	1,57mm (0.06 in)	EACH 1

Laparoscopic Tip



C4604ELT

Catalog No.	Sterile	Description	Tip length	Tip ID*	Quantity
Reusable (6 times)					
C4604ELT	NO	23 kHz Laparoscopic Tip reusable (1 tip / 6 flues)	30,14 cm (11.87 in)	1,98 mm (0.08 in)	EACH 1

* Inner Diameter

Handpieces



C2600



C2601



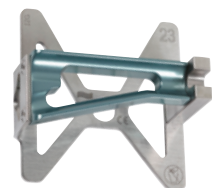
C2602

Catalog No.	Description	Quantity
C2600	23 kHz Straight Handpiece	EACH 1
C2601	23 kHz Angled Handpiece	EACH 1
C2602	36 kHz Straight Handpiece	EACH 1

Torquing Accessories



C5636



C5623



C5602



C5601



C5600

Catalog No.	Sterile	Description	Quantity
C5600	NO	Tip Torquing Set	EACH 1
C5601	YES	23 kHz Sterile Torque Wrench	BOX 6
C5602	YES	36 kHz Sterile Torque Wrench	BOX 6
C5623	NO	23 kHz Reusable Torque Base	EACH 1
C5636	NO	36 kHz Reusable Torque Base	EACH 1

Manifold Tubing



C3600/C3601

Catalog No.	Sterile	Description	Quantity
C3600	YES	23 kHz Manifold Tubing	BOX 6
C3601	YES	36 kHz Manifold Tubing	BOX 6

Electrosurgery Module – CEM™ Nosecone



C6623



C6636

Catalog No.	Sterile	Description	Quantity
C6623*	YES	23 kHz CEM™ Nosecone	BOX 6
C6636*	YES	36 kHz CEM™ Nosecone	BOX 6

*The CEM™ Nosecone combined with Covidien Force FX® generator adds electrosurgery capacity to the CUSA® Excel+ system.

Accessories



CO005



CO023



C2623 / C2636



CV260438000

Catalog No.	Sterile	Description	Quantity
CO005	NO	Contamination Guard	BOX 2
CO023	NO	23 kHz Handpiece extended life tip maintenance kit	BOX 35
C2623	NO	23 kHz Sterilization Case	EACH 1
C2636	NO	36 kHz Sterilization Case	EACH 1
CV260438000	NO	Specimen Trap	BOX 12

Replacement Parts

Catalog No.	Description	Quantity
150000090	Footswitch	EACH 1
C380761000	23 kHz Reusable Nosecone	EACH 1
C223600215	36 kHz Reusable Nosecone	EACH 1



150000090



C380761000



C223600215



Distributed by

Sales & Marketing EMEA

Integra LifeSciences Services (France) SAS
Immeuble Séquoia 2 • 97 allée Alexandre Borodine
Parc technologique de la Porte des Alpes
69800 Saint Priest • FRANCE
Phone: 33 (0)4 37 47 59 00 phone • Fax: 33 (0)4 37 47 59 99 fax
integralife.eu

Integra LifeSciences (Ireland) Ltd
IDA Business and Technology Park
Tullamore, Offaly • IRELAND

Customer Services

International: +33 (0) 437 47 59 10 • +33 (0) 437 47 59 29 (Fax) • csemea@integralife.com
France: +33 (0) 437 47 59 10 • +33 (0) 437 47 59 29 (Fax) • custsvfrance@integralife.com
United Kingdom: +44 (0) 1264 345 780 • +44 (0) 1264 363 782 (Fax) • custsvcuk@integralife.com
Germany: +49 (0) 2102 5535 6200 • +49 (0) 2102 5536 636 (Fax) • custsvgermany@integralife.com
Benelux: +32 (0)2 257 4130 • +32 (0)2 253 2466 (Fax) • custsvbenelux@integralife.com
Switzerland: +41 (0)2 27 21 23 30 • +41 (0)2 27 21 23 99 (Fax) • custsvsuisse@integralife.com