

Endoscope

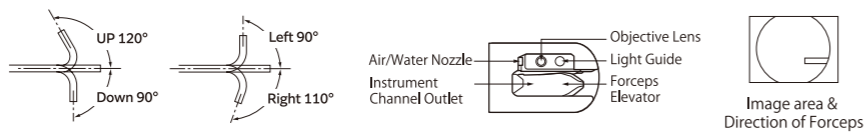


ED-840T/ED-840XT

Viewing direction	ED-840T:105° (retro-viewing 15°), ED-840XT:95° (retro-viewing 5°)
Field of view	100°
Observation range	4-60mm
Bending capability	UP 120° / Down 90°, Left 90° / Right 110°
Working length	1250mm
Total length	1550mm
Distal end diameter	13.1mm
Insertion tube diameter	11.3mm
Minimum diameter of instrument channel	4.5mm

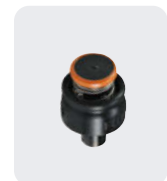


Product name: Video Endoscope
 GMDN:36112
 Generic name: Flexible video duodenoscope, reusable



Accessories

Valves for G7 control portion



SB-605

Product name: Suction Valve
 GMDN:61793
 Generic name: Endoscope suction valve, reusable



AW-603

Product name: Air/Water Valve
 GMDN:61792
 Generic name: Endoscope air/water valve, reusable



AW-604G

Product name: Gas/Water Valve
 GMDN:61792
 Generic name: Endoscope air/water valve, reusable

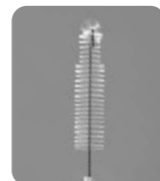
Distal End Cap



DC-840D

Product name: Distal End Cap
 GMDN:64277
 Generic name: Endoscope patient protection cap, single-use

Disposable Cleaning Brushes



WB11003DV

for suction valve cylinder, air/water valve cylinder and instrument channel inlet
 Product name: Cleaning Brush
 GMDN:38835
 Generic name: Surgical instrument/endoscope cleaning utensil, single-use



WB7025DC

for instrument channel and suction channel
 Product name: Cleaning Brush
 GMDN:38835
 Generic name: Surgical instrument/endoscope cleaning utensil, single-use



WB1318DE

for distal end and forceps elevator
 Product name: Cleaning Brush
 GMDN:38835
 Generic name: Surgical instrument/endoscope cleaning utensil, single-use

Attachment and detachment of distal end cap

Attachment



Cover the distal end cap until the installation groove of the distal end is hidden completely.



Make sure that the distal end cap is attached tightly by pulling it straight.

Detachment



Turn over a portion of distal end cap near the instrument channel outlet.



Pull straight out.



Video Duodenoscopes
ED-840T/ED-840XT



INTRODUCING THE NEXT GENERATION OF DUODENOSCOPES

Welcome to a new era of duodenoscopes by Fujifilm. Carefully engineered to work in harmony with Endoscopists, Fujifilm's ED-840T & ED-840XT are designed to enhance diagnostic precision by high resolution endoscope image within the clinical workflow, whilst optimising infection control for patients.

SUPPORTING HIGH-PERFORMANCE

With a newly developed, high-performance insertion section, the next generation of duodenoscopes offer advanced force transmission and increased manoeuvrability.

GREATER CONTROL FOR ENDOSCOPISTS

A newly designed elevator with G-Lock mechanism, featured in both duodenoscopes, now allows enhanced manipulation of endotherapy instruments, giving clinicians greater control and flexibility during procedures.

NEW POSSIBILITIES

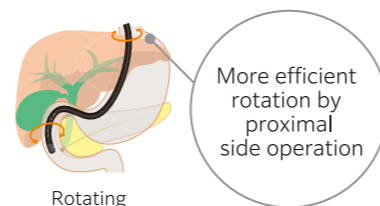
Uncovering new possibilities for Hepato-Pancreato-Biliary (HPB) interventional therapy, Fujifilm's next generation endoscopes have an increased working channel size, featuring a 4.5mm instrument channel, whilst maintaining a slim 13.1mm distal end diameter. Endoscopy professionals can now explore new opportunities with advanced technology that accommodates larger endotherapy devices and increased suction capabilities.

Interventional Therapy

Insertion performance & manoeuvrability
ED-840T/ED-840XT has an atraumatic, slim, tapered distal end cap for smooth patient intubation.

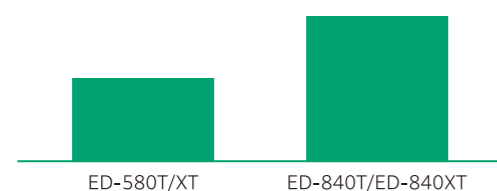
Advanced force transmission provides increased control of the endoscope by efficient transmission of rotation*1.

*1 efficient transmission of rotation: Comparison with ED-580T/ED-580XT



Oversized 4.5mm instrument channel

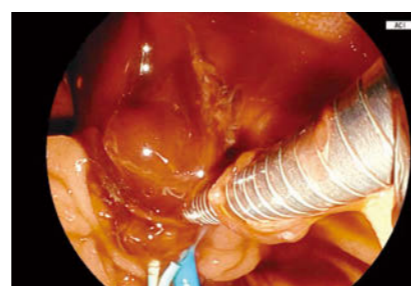
The ED-840T & ED-840XT incorporates a large 4.5mm instrument channel that can accommodate large endotherapeutic devices whilst increasing suction performance.



Comparison between the ED-580T/ED-580XT and the ED-840T/ED-840XT Duodenoscope suction volume when the endoscope distal end is immersed with a 3.9 mm diameter endotherapeutic device inserted into the working channel.

Increased manipulation of endotherapy devices

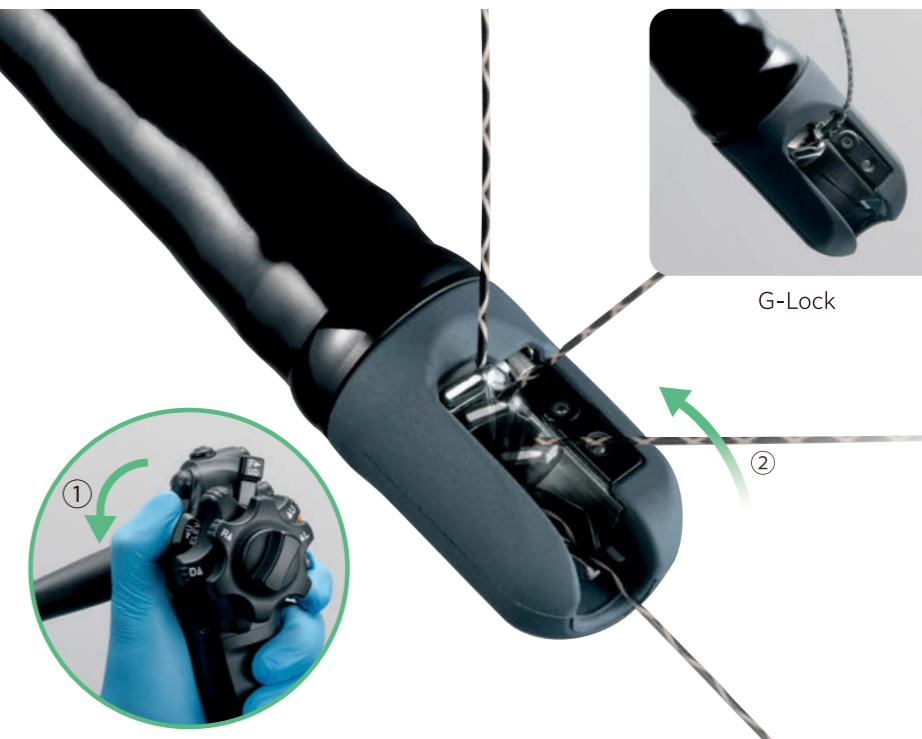
The redesigned elevator allows for a greater range of instrument control.



G-Lock GW Locking Mechanism

The newly designed elevator mechanism increases the range of motion and the angle at which therapeutic instruments can exit the working channel, allowing the operator to significantly change the angle of approach to the thick device*2.

Moreover, the movement of the control lever is transmitted to the device, with increased precision for accurate and precise positioning of instrumentation*3 during clinical procedures.



*2 the angle of approach to the thick device: Comparison with ED-580T/ED-580XT

*3 increased precision for accurate and precise positioning of instrumentation: Comparison with ED-580T/ED-580XT

G-LOCK MECHANISM FOR EFFICIENCY AND PRECISION

Experience an increased elevation force when using the lever featuring a specially designed G-Lock mechanism that allows guidewires to be fixed into position with precision.

EASE OF USE AND MAINTENANCE

Featuring a 4.5mm working channel for the smooth insertion of therapeutic devices, the instrument channel for Fujifilm's endoscopes facilitate the rapid exchange of instrumentation during procedures. A single use distal attachment hood has been developed to support efficient cleaning and time between procedures in clinic.

High resolution endoscopic image & BLI/LCI/ACI technology

BLI, LCI and ACI technologies are incorporated.



High resolution image



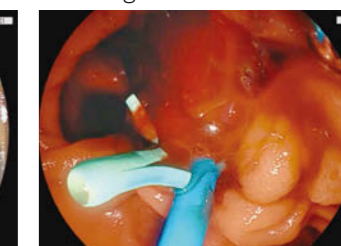
BLI image



LCI image



ACI image



*ACI technology is available with the combination of EP-8000 only

Single-use distal end cap

Sterilized dedicated distal end cap is developed.



Retro-viewing 15° and 5°

Two products line up is available according to physician's preference.