

AOHUA

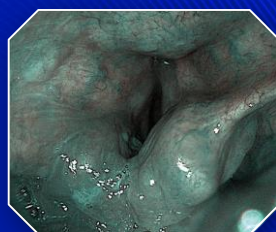
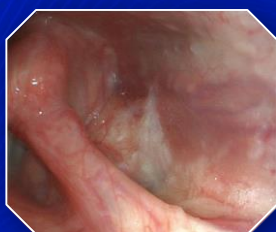


ABF/BBF/ **VBC**

Fiber Bronchoscopes/ **Video Bronchoscopes**

Features

- Endoscopes of the VBC-1T30 type adopt a new type of micro image sensor, which can provide clear wide-angle and bright images with the field angle of 120°.
- Endoscopes of the VBC-Q30 type have 4.9 mm ultra-fine insertion part, which combined with the human-facing handle operation part, provides excellent flexibility and operating hand feel.
- The external diameter of ABF-3 insertion tube is only 3.5 mm, which, combined with the 1.2mm working channel, provides excellent insertion performance in diagnosis related to the deeper trachea.
- For endoscopes of the BBF type, a portable LED light source is used, making the examination under the bronchoscope convenient and fast and can also provide bright lighting even in the absence of conventional cold light source or under other special circumstances.



	Model	Working Length	Diameter of insertion tube	Depth	Diameter of instrument channel	View of field	Range of bending
Vide Bronchoscopes	VBC-Q30	600mm	4.9mm	3-50mm	2.0mm	120°	U180°D130°
	VBC-1T30	600mm	5.7mm	3-50mm	2.0mm	120°	U180°D130°
Fiber Bronchoscopes	ABF-3	600mm	3.5mm	2-60mm	1.2mm	105°	U180°D130°
	ABF-4	600mm	4mm	2-60mm	/	120°	U180°D130°
	ABF-5	600mm	4.8mm	2-60mm	2.8mm	120°	U180°D130°
	ABF-6	600mm	5.8mm	2-60mm	2.8mm	120°	U180°D130°
	BBF-4	600mm	4mm	2-60mm	/	120°	U180°D130°
	BBF-5	600mm	4.8mm	2-60mm	2.2mm	120°	U180°D130°
	BBF-6	600mm	5.8mm	2-60mm	2.2mm	120°	U180°D130°

call us **86-21-6768 1018**

Shanghai Aohua Photoelectricity Endoscope CO.,LTD.
 No.66, Lane133, Guangzhong Road,Minhang District,
 Shanghai, P.R.China.(Postcode: 201108)
 Email: marketing@aohua.com
www.aohua.com/en

See the Manual for details of contraindications or precautions