

TYA01~TYA04 >>>

Code 编号	Description 描述	Packing 包装
TYA01	Centrifuge Tube 50ml, Free Standing, Bulk Pack 离心管50ml, 可立式, 散装	50pcs/bag, 500pcs/ctn
TYA01-D	Centrifuge Tube 50ml, Free Standing, Individual Packing, E.O. Sterile 离心管50ml, 可立式, 独立包装, EO消毒	1pc/bag, 50pcs/bag, 500pcs/ctn
TYA02	Centrifuge Tube 50ml, Conical Bottom, Bulk Pack 离心管50ml, 锥形底, 散装	50pcs/bag, 500pcs/ctn
TYA02-D	Centrifuge Tube 50ml, Conical Bottom, Individual packing, E.O. Sterile 离心管50ml, 锥形底, 独立包装, EO消毒	1pc/bag, 50pcs/bag, 500pcs/ctn
TYA03	Centrifuge Tube 15ml, Conical Bottom, Bulk Pack 离心管15ml, 锥形底, 散装	100pcs/bag, 2000pcs/ctn
TYA03-D	Centrifuge Tube 15ml, Conical Bottom, Individual packing, E.O. Sterile 离心管15ml, 锥形底, 独立包装, EO消毒	1pc/bag, 100pcs/bag, 1000pcs/ctn
TYA04	Centrifuge Tube 10ml, Conical Bottom, Bulk Pack 离心管10ml, 锥形底, 散装	100pcs/bag, 2000pcs/ctn



TYA05~TYA08 >>>

Code 编号	Description 描述	Packing 包装
TYA05	Centrifuge Tube 10ml, Bulk Pack 离心管10ml, 散装	200pcs/bag, 3000pcs/ctn
TYA06	Centrifuge Tube 7ml, Bulk Pack 离心管7ml, 散装	200pcs/bag, 4000pcs/ctn
TYA07	Centrifuge Tube 5ml, Bulk Pack 离心管5ml, 散装	200pcs/bag, 6000pcs/ctn
TYA08	Centrifuge Tube 2ml, Bulk Pack 离心管2ml, 散装	500pcs/bag, 10000pcs/ctn



TYA09~TYA10 >>>

Code 编号	Description 描述	Packing 包装
TYA09	Centrifuge Tube 1.5ml, Shield Lid, Bulk Pack 离心管1.5ml, 有齿, 散装	500pcs/bag, 10000pcs/ctn
TYA10	Centrifuge Tube 1.5ml, Bulk Pack 离心管1.5ml, 散装	500pcs/bag, 10000pcs/ctn

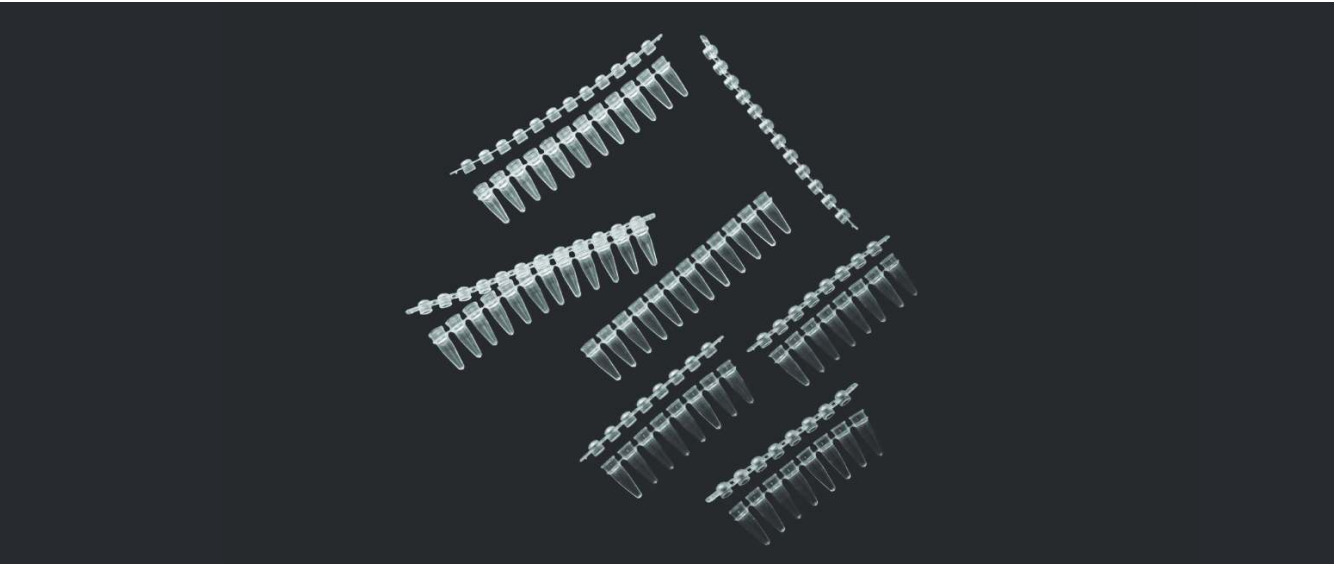


TYA11~TYA13 >>>

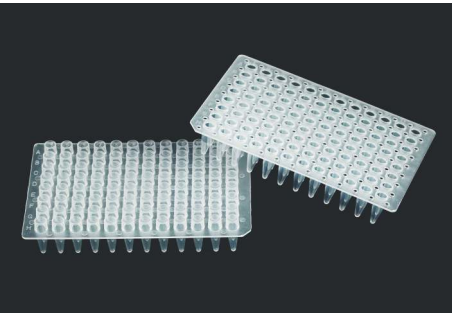
Code 编号	Description 描述	Packing 包装
TYA11	Centrifuge Tube 0.5ml, Shield Lid, Bulk Pack 离心管0.5ml, 有齿, 散装	1000pcs/bag, 25000pcs/ctn
TYA12	Centrifuge Tube 0.2ml, Without Graduation, Flat Lid, Bulk Pack 离心管0.2ml, 无刻度, 平盖, 散装	1000pcs/bag, 50000pcs/ctn
TYA13	Centrifuge Tube 0.2ml, Without Graduation, Domed Lid, Bulk Pack 离心管0.2ml, 无刻度, 鼓盖, 散装	1000pcs/bag, 50000pcs/ctn

TYA14~TYA15 >>>

Code 编号	Description 描述	Packing 包装
TYA14	8-pc PCR Tube Strip for 0.2ml, Tube and Lid Separate Packing PCR 8连管, 单孔容量0.2ml, 管盖分开包装	200pcs/bag, 5000pcs/ctn
TYA15	12-pc PCR Tube Strip for 0.2ml, Tube and Lid Separate Packing PCR 12连管, 单孔容量0.2ml, 管盖分开包装	200pcs/bag, 5000pcs/ctn

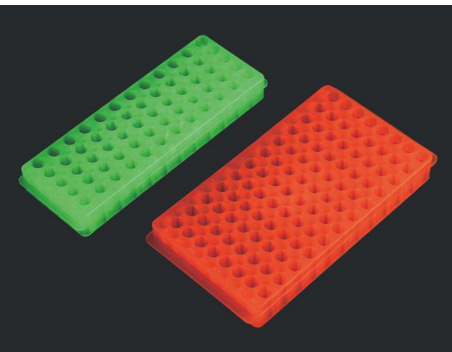


TYA16~TYA17 >>>



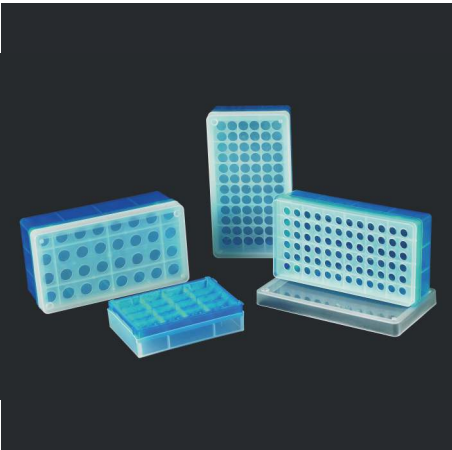
Code 编号	Description 描述	Packing 包装
TYA16	96-well PCR Plate, Plain End 96孔, PCR板, 平口	1000pcs/ctn
TYA17	96-well PCR Plate, Bulged End 96孔, PCR板, 凸口	1000pcs/ctn

TYA18~TYA19 >>>



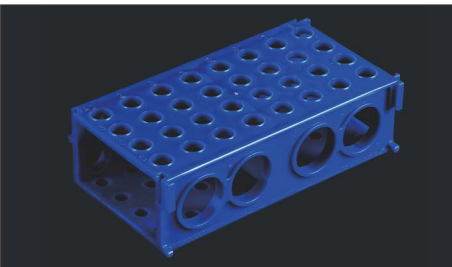
Code 编号	Description 描述	Packing 包装
TYA18	96-well PCR Plate for 0.5ml and 1.5ml Centrifuge Tube 96孔, 存放0.5ml和1.5ml离心管两用板	100pcs/ctn
TYA19	60-well PCR Plate for 0.5ml and 1.5ml Centrifuge Tube 60孔, 存放0.5ml和1.5ml离心管两用板	100pcs/ctn

TYA20~TYA23 >>>



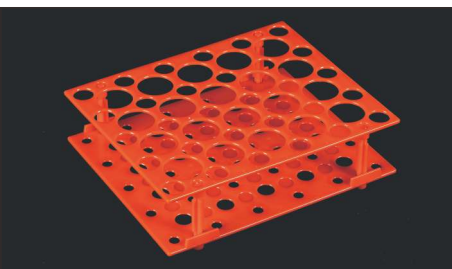
Code 编号	Description 描述	Packing 包装
TYA20	72-well 1.5ml Centrifuge Tube Box 72孔, 1.5ml离心管盒	80pcs/ctn
TYA21	72-well 0.5ml Centrifuge Tube Box 72孔, 0.5ml离心管盒	80pcs/ctn
TYA22	96-well 0.2ml Centrifuge Tube Box 96孔, 0.2ml离心管盒	250pcs/ctn
TYA23	32-well 5ml Centrifuge Tube Box 32孔, 5ml离心管盒	80pcs/ctn

TYA24 >>>

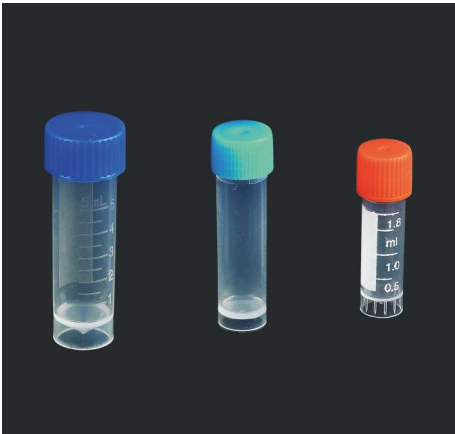


Code 编号	Description 描述	Packing 包装
TYA24	Multifunction Centrifuge Tube Box for 0.5ml, 1.5ml, 2ml, 50ml 多功能离心管架, 存放0.5ml, 1.5ml, 2ml, 50ml	1pc/bag, 50pcs/ctn

TYA25 >>>



Code 编号	Description 描述	Packing 包装
TYA25	PCR Tube Rack for 30pcs of 15ml and 20pcs of 50ml 离心管架, 存放30个15ml, 20个50ml	1pc/bag, 50pcs/ctn



TYB01~TYB03 >>>

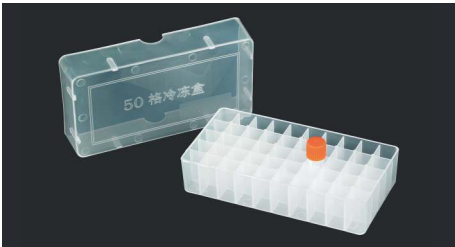
Code 编号	Description 描述	Packing 包装
TYB01	1.8ml Cryovial Tube, with Gasket, Printed Graduation 1.8ml冷冻管, 带垫圈, 印刷刻度	500pcs/bag, 10000pcs/ctn
TYB02	4ml Cryotube, with Gasket 4ml冷冻管, 带垫圈	500pcs/bag, 5000pcs/ctn
TYB03	5ml Cryotube, with Gasket, Printed Graduation 5ml冷冻管, 带垫圈, 印刷刻度	200pcs/bag, 2000pcs/ctn

TYB04~TYB08-1 >>>

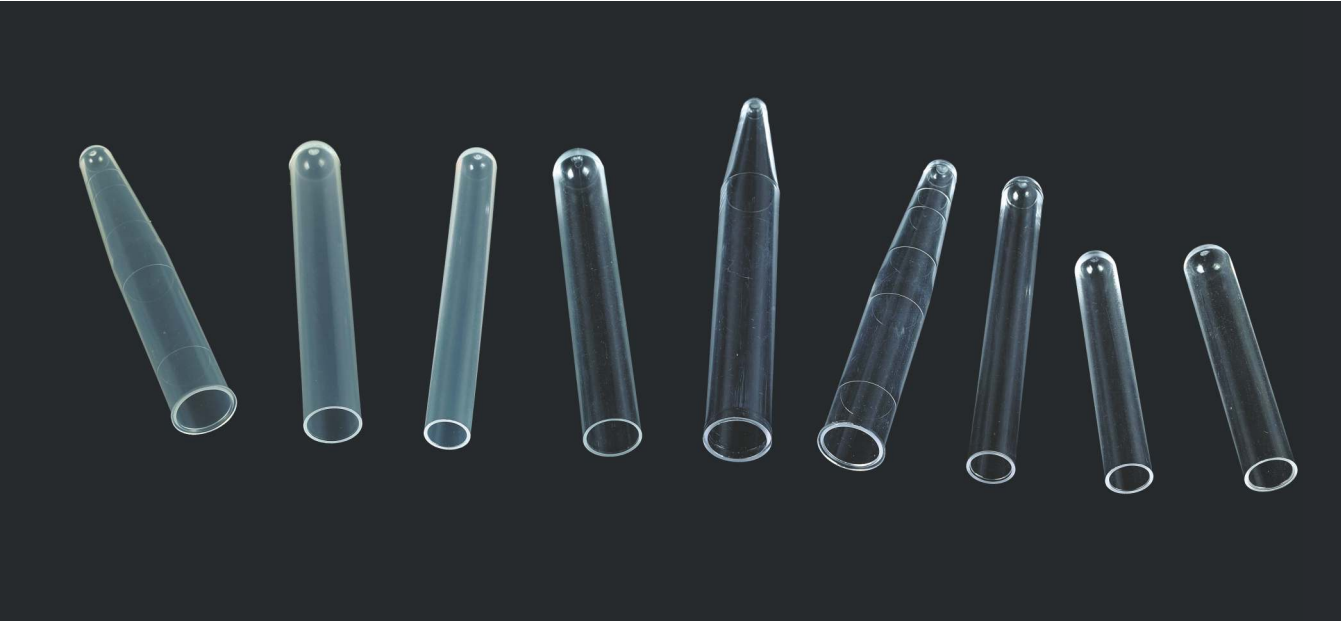


Code 编号	Description 描述	Packing 包装
TYB04	0.5ml Cryotube, with Gasket, Free Standing 0.5ml冷冻管, 带垫圈, 可立式	500pcs/bag, 12000pcs/ctn
TYB04-1	0.5ml Cryotube, with Gasket, Free Standing, with Hinged Screw Cap 0.5ml冷冻管, 带垫圈, 可立式, 连盖	500pcs/bag, 10000pcs/ctn
TYB05	0.5ml Cryotube, with Gasket, Conical Bottom 0.5ml冷冻管, 带垫圈, 尖底	500pcs/bag, 25000pcs/ctn
TYB06	1ml Cryotube, with Gasket, Free Standing 1ml冷冻管, 带垫圈, 可立式	500pcs/bag, 10000pcs/ctn
TYB07	1.5ml Cryotube, with Gasket, Free Standing 1.5ml冷冻管, 带垫圈, 可立式	500pcs/bag, 10000pcs/ctn
TYB08	1.5ml Cryotube, with Gasket, Conical Bottom 1.5ml冷冻管, 带垫圈, 尖底	500pcs/bag, 10000pcs/ctn
TYB08-1	1.5ml Cryotube, with Gasket, Conical Bottom, with Hinged Screw Cap 1.5ml冷冻管, 带垫圈, 尖底, 连盖	500pcs/bag, 10000pcs/ctn

TYB09 >>>



Code 编号	Description 描述	Packing 包装
TYB09	50-well 1.8ml Cryotube Box 50孔1.8ml冷冻管盒	150pcs/ctn



TYD01~TYD14 >>>

Code 编号	Description 描述	Packing 包装	
TYD01	Test Tube 12*75mm, PS 试管12*75mm, PS	500pcs/bag, 5000pcs/ctn	
TYD02	Test Tube 12*75mm, PP 试管12*75mm, PP	500pcs/bag, 5000pcs/ctn	
TYD03	Test Tube 13*75mm, PS 试管13*75mm, PS	500pcs/bag, 5000pcs/ctn	
TYD04	Test Tube 13*75mm, PP 试管13*75mm, PP	500pcs/bag, 5000pcs/ctn	
TYD05	Test Tube 12*100mm, PS 试管12*100mm, PS	300pcs/bag, 3000pcs/ctn	
TYD06	Test Tube 12*100mm, PP 试管12*100mm, PP	300pcs/bag, 3000pcs/ctn	
TYD07	Test Tube 13*100mm, PS 试管13*100mm, PS	400pcs/bag, 3000pcs/ctn	
TYD08	Test Tube 13*100mm, PP 试管13*100mm, PP	400pcs/bag, 3000pcs/ctn	
TYD09	Test Tube 15*100mm, PS 试管15*100mm, PS	250pcs/bag, 2500pcs/ctn	
TYD10	Test Tube 15*100mm, PP 试管15*100mm, PP	250pcs/bag, 2500pcs/ctn	
TYD11	Test Tube 16*100mm, PS 试管16*100mm, PS	150pcs/bag, 2400pcs/ctn	
TYD12	Test Tube 16*100mm, PP 试管16*100mm, PP	150pcs/bag, 2400pcs/ctn	
TYD13	Test Tube 16*102mm, PS 试管16*102mm, PS	250pcs/bag, 2500pcs/ctn	
TYD14	Test Tube 16*102mm, PP 试管16*102mm, PP	250pcs/bag, 2500pcs/ctn	



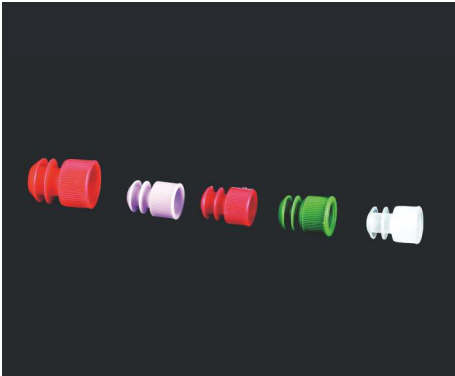
TYD15 >>>

Code 编号	Description 描述	Packing 包装	
TYD15	10ml Test Tube with Screw Cap, PS 10ml试管配螺旋盖, PS	100pcs/bag, 2500pcs/ctn	



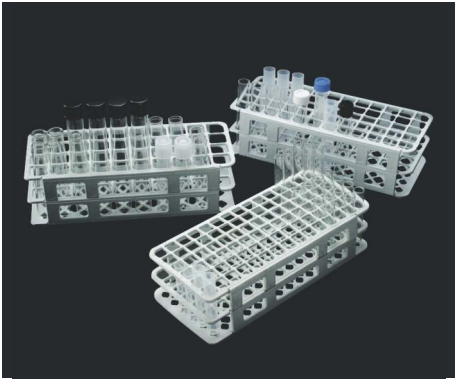
TYD16 >>>

Code 编号	Description 描述	Packing 包装	
TYD16	10ml Test Tube with Screw Cap, PS 10ml试管配螺旋盖, PS	100pcs/bag, 2000pcs/ctn	



TYD17~TYD19 >>>

Code 编号	Description 描述	Packing 包装	
TYD17	Tube Stopper 12mm, PE 试管塞12mm, PE	1000pcs/bag, 20000pcs/ctn	
TYD18	Tube Stopper 13mm, PE 试管塞13mm, PE	1000pcs/bag, 25000pcs/ctn	
TYD19	Tube Stopper 16mm, PE 试管塞16mm, PE	1000pcs/bag, 10000pcs/ctn	



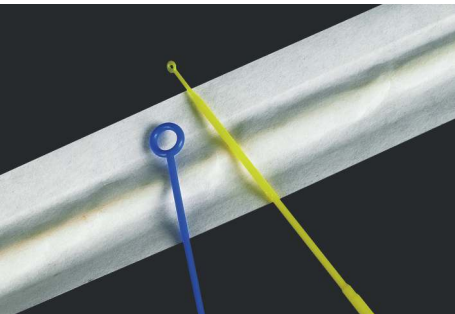
TYD20~TYD22 >>>

Code 编号	Description 描述	Packing 包装	
TYD20	Tube Rack 90 Well, 12-13mm 试管架90孔, 12-13mm	1pcs/bag, 50pcs/ctn	
TYD21	Tube Rack 60 Well, 15-17mm 试管架60孔, 15-17mm	1pcs/bag, 50pcs/ctn	
TYD22	Tube Rack 40 Well, 20-21mm 试管架40孔, 20-21mm	1pcs/bag, 50pcs/ctn	



TYE11~TYE13 >>>

Code 编号	Description 描述	Packing 包装	
TYE11	Tissue Culture Plate 24 Well, EO Sterile 24孔培养板, EO消毒	1pcs/bag,200pcs/ctn	
TYE12	Tissue Culture Plate 12 Well, EO Sterile 12孔培养板, EO消毒	1pcs/bag,200pcs/ctn	
TYE13	Tissue Culture Plate 6 Well, EO Sterile 6孔培养板, EO消毒	1pcs/bag,200pcs/ctn	

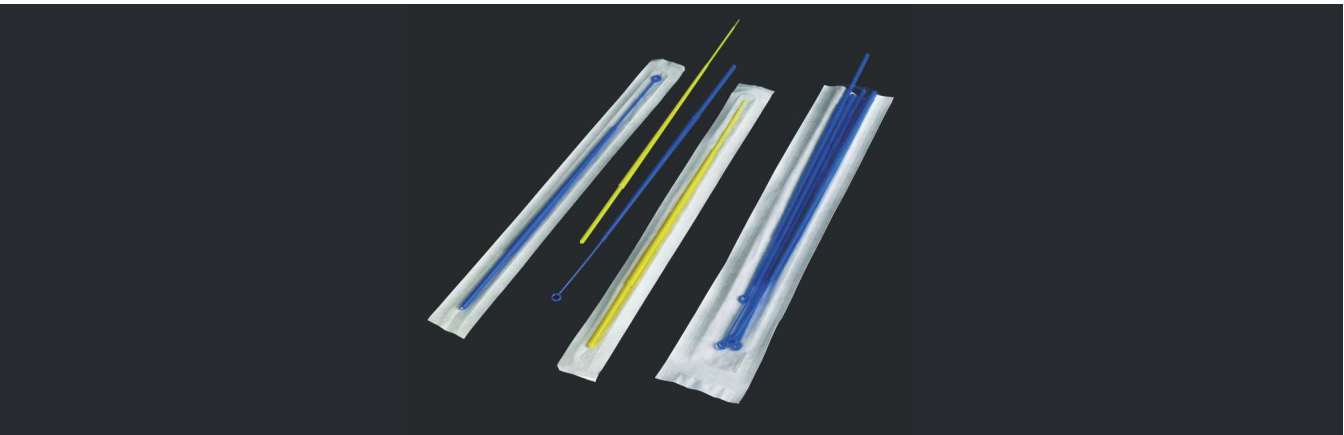


TYE14~TYE15 >>>

Code 编号	Description 描述	Packing 包装	
TYE14	Inoculation Loop 1ul, Bulk, Non-Sterile 1ul采样棒, 散装不消毒	1000pcs/bag, 10000pcs/ctn	
TYE15	Inoculation Loop 10ul, Bulk, Non-Sterile 10ul采样棒, 散装不消毒	1000pcs/bag, 10000pcs/ctn	

TYE14A~TYE15D >>>

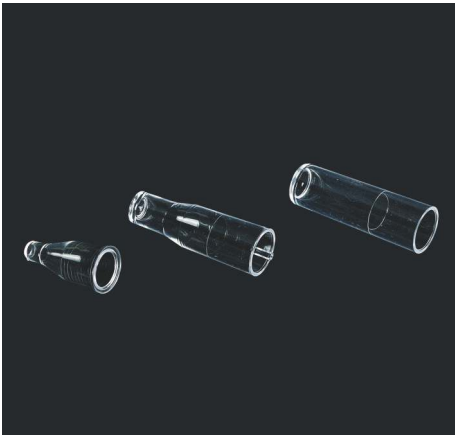
Code 编号	Description 描述	Packing 包装	
TYE14A	Inoculation Loop 1ul, EO Sterile 1ul采样棒, 20支/纸塑袋, EO消毒	20pcs/bag, 10000pcs/ctn	
TYE14D	Inoculation Loop 1ul, EO Sterile 1ul采样棒, 1支/纸塑袋, EO消毒	1pc/single bag, 100pcs/bag, 5000pcs/ctn	
TYE15A	Inoculation Loop 10ul, EO Sterile 10ul采样棒, 20支/纸塑袋, EO消毒	20pcs/bag, 10000pcs/ctn	
TYE15D	Inoculation Loop 10ul, EO Sterile 10ul采样棒, 1支/纸塑袋, EO消毒	1pc/single bag, 100pcs/bag, 5000pcs/ctn	



TYF01~TYF03 >>>

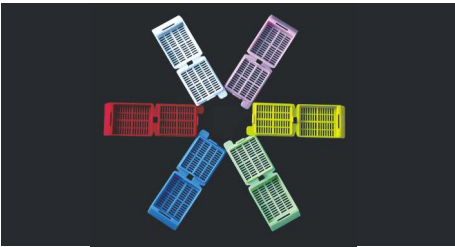
Code 编号	Description 描述	Packing 包装	
TYF01	30ml Specimen Cup, No Graduation, Bulk Pack, Non Sterile, PS 30ml样品杯, 无刻度, 散装不消毒, PS	1000pcs/ctn	
TYF02	60ml Specimen Cup, Molded Graduation, Bulk Pack, Non Sterile, PP 60ml样品杯, 模具刻度, 散装不消毒, PP	500pcs/ctn	
TYF03	120ml Specimen Cup, Molded Graduation, Bulk Pack, Non Sterile, PP 120ml样品杯, 模具刻度, 散装不消毒, PP	500pcs/ctn	

Note: sterilization, individual package, label and spoon are available for client' s request



TYF04~TYF06 >>>

Code 编号	Description 描述	Packing 包装	
TYF04	Suit German TECO Single Channel Coagulometer, PS 配TECO单通道血凝仪, PS	1000pcs/bag, 25000pcs/ctn	
TYF05	Suit German Labor Coagulometer, PS 配德国蓝波血凝仪, PS	1000pcs/bag, 10000pcs/ctn	
TYF06	Suit Spain Cruor Apparatus Coagulometer, PS 配西班牙血凝仪, PS	1000pcs/bag, 10000pcs/ctn	



TYH01 >>>

Code 编号	Description 描述	Packing 包装
TYH01	Embedding Cassette Stripe Holes, POM 包埋盒, 长条型, POM材质	500pcs/bag, 5000pcs/ctn



TYH02 >>>

Code 编号	Description 描述	Packing 包装
TYH02	Embedding Cassette Square Holes, POM 包埋盒, 方格型, POM材质	500pcs/bag, 5000pcs/ctn



TYH03 >>>

Code 编号	Description 描述	Packing 包装
TYH03	Embedding Cassette Round Holes without Cover, POM 包埋盒, 圆孔无盖, POM材质	500pcs/bag, 5000pcs/ctn

TYH04~TYH09 >>>

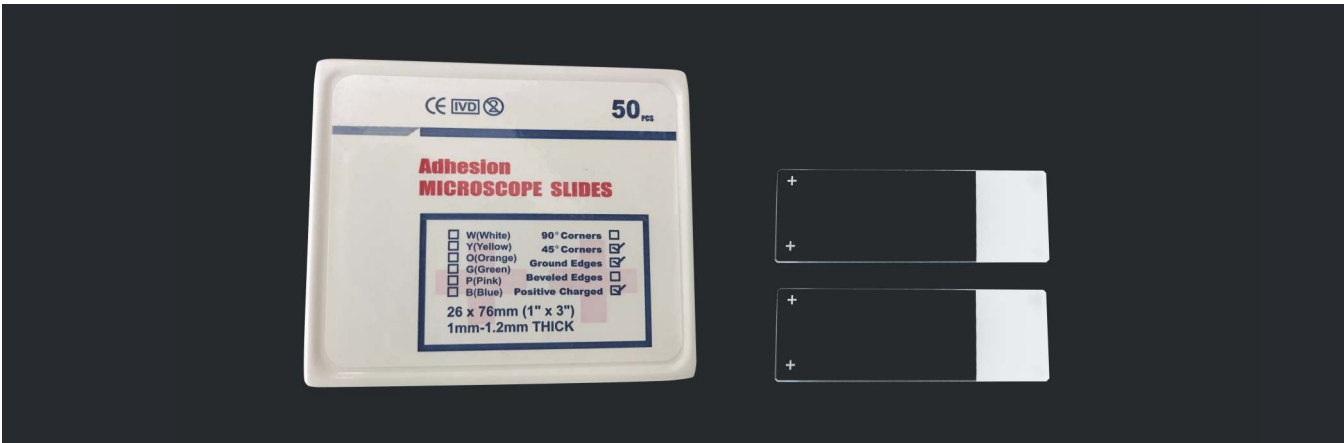
Code 编号	Description 描述	Packing 包装
TYH04	Histology Tissue Molds 7*7*6, Stainless Steel 包埋盒底模, 7x7x6, 不锈钢材质	50pcs/bag
TYH05	Histology Tissue Molds 15*15*6, Stainless Steel 包埋盒底模, 15x15x6, 不锈钢材质	50pcs/bag
TYH06	Histology Tissue Molds 24*24*6, Stainless Steel 包埋盒底模, 24x24x6, 不锈钢材质	50pcs/bag
TYH07	Histology Tissue Molds 30*24*6, Stainless Steel 包埋盒底模, 30x24x6, 不锈钢材质	50pcs/bag
TYH08	Histology Tissue Molds 37*24*6, Stainless Steel 包埋盒底模, 37x24x6, 不锈钢材质	50pcs/bag
TYH09	Cover for Embedding Cassette, Stainless Steel 包埋盒盖子, 不锈钢材质	100pcs/bag



TYI-7101~TYI-7105 >>>

Code 编号	Description 描述	Packing 包装
TYI-7101	Polished Edges, Plain 抛光边	50pcs/box, 50box/ctn
TYI-7102	Cut Edges, Plain 未磨边	50pcs/ box, 50box/ctn
TYI-7105	Polished Edges, Frosted One End On One Side 抛光边, 单头单面磨砂	50pcs/ box, 50box/ctn

Note: 72pcs/box for slide is available base on client' s request



TYI01 >>>

Code 编号	Description 描述	Packing 包装
TYI01	Adhesion Microscope Slide 粘附载玻片 (液基细胞子, 冷冻病理切片, 免疫组化专用)	50pcs/box, 50box/ctn

CONTENTS

1. Product description.....	2
1.1 Fixed volume pipette	2
1.2 Adjustable volume pipette	2
1.3 Tips	3
1.4 Black tip cone	3
1.5 Pipette materials	3
2. Package	4
3. Pipette operation	4
3.1 Volume setting	4
3.2 Sealing and ejecting tips	4
3.3 Removing the tip ejector	4
4. Pipetting techniques	5
4.1 Forward technique	5
4.2 Reverse technique	5
5. Pipetting recommendations	5
6. Storage	6
7. Calibration	6
7.1 Checking calibration	6
7.2 Recalibration	6
8. Maintenance	6
8.1 Cleaning your pipette	7
8.2 In-house maintenance.....	7
9. Trouble shooting	8
10. Warranty information.....	

Digitally signed by Ionaşcu Andrei
Date: 2023.01.19 16:32:12 EET
Reason: MoldSign Signature
Location: Moldova



Instruction Manual

1. PRODUCT DESCRIPTION

This pipette is a general purpose pipette for sampling and dispensing accurate liquid volumes. The pipettes operate on the air displacement principle and use disposable tips. The black tip cone can be sterilized (121°C,0.15Mpa).

The pipettes cover a volume range of 0.5ul to 5ml. All pipettes have been quality tested according to our company’s demands. The quality control according to our company’s involves gravimetric testing of each pipette with distilled water at 22°C using the manufacturer’s original tips.

1.1.Fixed volume pipette

Cat. No.	Volume(ul)	Inacc.%	Impr.%
A3001	0.1	±4.8	≤13.01
A3002	0.2	±4.6	≤12.81
A3003	0.25	±4.6	≤12.81
A3004	0.5	±4.5	≤12.81
A3005	1	±4.2	≤12.81
A3006	2	±4.0	≤12.61
A3007	2.5	±4.0	≤12.61
A3008	5	±3.8	≤12.41
A3009	10	±3.0	≤12.01
A3010	20	±2.4	≤11.01
A3011	25	±2.4	≤11.01
A3012	50	±2.4	≤11.01
A3013	100	±1.5	≤10.81
A3014	200	±1.2	≤10.71
A3015	250	±1.2	≤10.71
A3016	500	±1.2	≤10.71
A3017	1000	±1.0	≤10.51
A3018	2000	±1.0	≤10.51
A3019	2500	±1.0	≤10.51
A3020	5000	±1.0	≤10.51

1.2.Adjustable volume pipette

Cat No	Volume Range(ml)	Increment (ul)	Test Volume (ul)	Inacc (%)	Impr (%)	Tip ID
A3021	0.1-2.5µl	0.05 µl	2.5µl	±3.0	≤113.01	10µl
			1.25µl	±6.0	≤114.01	
			0.25µl	±12.0	≤116.01	
A3022	0.5-10µl	0.1 µl	10 µl	±3.0	≤12.01	10 µl
			5 µl	±6.0	≤13.01	
			1 µl	±10.0	≤13.01	
A3023	2-20µl	0.5 µl	20 µl	±3.0	≤11.51	200µl
			10 µl	±3.0	≤12.01	
			2 µl	±10	≤13.01	
A3024	5-50µl	0.5 µl	50 µl	±2.4	≤11.51	200µl
			25 µl	±2.8	≤12.01	
			5 µl	±6.0	≤13.01	
A3025	10-100µl	1 µl	100 µl	±1.5	≤11.01	200µl
			50 µl	±2.2	≤11.51	
			10 µl	±3.0	≤12.01	

Cat No	Volume Range(ml)	Increment	Test Volume	Inacc (%)	Impr (%)	Tip ID
A3026	20-200µl	1 µl	200 µl	±1.5	≤11.01	200µl
			100 µl	±1.5	≤11.01	
			20 µl	±3.0	≤11.51	
A3027	50-200µl	1 µl	200 µl	±1.5	≤11.01	200µl
			100 µl	±1.5	≤11.01	
			50 µl	±2.2	≤11.51	
A3028	100-1000µl	5 µl	1000 µl	±1.2	≤10.51	1000 µl
			500 µl	±1.5	≤10.51	
			100 µl	±1.5	≤11.01	
A3029	200-1000µl	5 µl	1000 µl	±1.2	≤10.51	1000 µl
			500 µl	±1.5	≤10.51	
			200 µl	±1.5	≤11.01	
A3030	1000-5000µl	50 µl	5000 µl	±1.0	≤10.51	5000 µl
			2500 µl	±1.0	≤10.51	
			1000 µl	±1.2	≤10.51	
A3031	2-10ml	0.1 ml	10ml	±0.5	≤110.31	10ml
			5ml	±0.8	≤110.31	
			2ml	±1.0	≤110.31	
A3045	8CH0.5-10µl	0.1 µl	10µl	±3.0	≤12.01	10µl
			5µl	±6.0	≤13.01	
			1µl	±10.0	≤13.01	
A3046	8CH5-50µl	0.5 µl	50µl	±2.4	≤11.51	200µl 300µl
			25µl	±2.8	≤12.01	
			5µl	±6.0	≤13.01	
A3047	8CH50-300µl	5 µl	300µl	±1.8	≤11.51	300µl
			150µl	±2.0	≤12.01	
			50µl	±2.2	≤13.01	
A3061	12CH0.5-10µl	0.1 µl	10µl	±3.0	≤12.01	10µl
			5µl	±6.0	≤13.01	
			1µl	±10.0	≤13.01	
A3062	12CH5-50µl	0.5 µl	50µl	±2.4	≤11.51	200µl 300µl
			25µl	±2.8	≤12.01	
			5µl	±6.0	≤13.01	
A3063	12CH50-300µl	5 µl	300µl	±1.8	≤11.51	300µl
			150µl	±2.0	≤12.01	
			50µl	±2.2	≤13.01	

1.3.Tips

These detachable, disposable tips are made of natural colour polypropylene. Tips packed in bulk or box

Note: never pipette liquid without attaching a tip to the pipette.

1.4. Black tip cone

The black tip cone can be sterilized(121°C,0.15Mpa)



Fig.1

1.5. Pipette materials

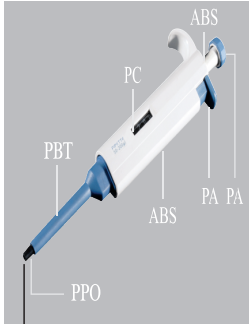


Fig.2

2. PACKAGE

The pipette package contains the following items:

- ◆ Pipette
- ◆ Calibration/opening tool
- ◆ Grease
- ◆ Instructions for use

3.PIPETTE OPERATION

3.1.Volume setting

The volume of the pipette is clearly shown through the handle grip window. The delivery volume(variable volume pipettes only) is set by turning the thumb button clockwise or anticlockwise(Fig.3). When setting the volume, please make sure that:

- ◆ the desired delivery volume clicks into place.
- ◆ the digits are completely visible in the display window.
- ◆ the selected volume is within the pipette’s specified range.

Note: Using excessive force to turn the push button outside the range may jam the mechanism and damage the pipette.

3.2.Sealing and ejecting tips

Before fitting a tip, make sure that the pipette tip cone is clean. Press the tip on the cone of the pipette firmly to ensure an airtight seal. The seal is tight when a visible sealing ring forms between the tip and the black tip cone(Fig.4).

Each pipette is fitted with a tip ejector to help eliminate the safety hazards associated with contamination. The tip ejector needs to be pressed firmly downwards to ensure proper tip ejection(Fig.5). Make sure that the tip is disposed of into a suitable waste container.

3.3.Removing the tip ejector

Please removing the tip ejector collar by following instructions (Fig.6)

- ◆ Push the tip ejector down. (1)
- ◆ Push the opening tool pin between the ejector bar and ejector collar to release the locking mechanism. (2)
- ◆ Pull the ejector collar off (3)
- ◆ Pushing the collar locking pin into the ejector bar hole, keeping the tip ejector pushed down.
- ◆ Release the tip ejector and test that it runs smoothly.



Fig.3



Fig.4



Fig.5



Fig.6

4.PIPETTING TECHNIQUES

4.1 Forward technique

For the best possible accuracy, please push and release the button slowly at all times, particularly when working with liquids that have a high viscosity. Never allow the operating button to snap back. Ensure that a clean tip is firmly pushed on to the tip cone of the pipette and there are no foreign particles in the tip itself.

Hold the pipette vertically during aspiration. Make sure that the liquid and container vessel are clean and that the pipette, tips and the liquid are at the same temperature.

1. Depress the operating button to the first stop(Fig.8B).
2. Dip the tip under the surface of the liquid about 2-3mm deep and slowly release the operating button(Fig. 8A). Withdraw the tip from the liquid touching it against the edge of the container to remove excess liquid.
3. Deliver the liquid by gently depressing the operating button to the first stop (Fig.8B). After a delay of about one second, continue to depress the operating button all the way down to the second stop (Fig. 8C). This action will empty the tip.
4. Release the operating button to the ready position.(Fig. 8A). If necessary, change the tip and continue with the pipetting.



Starting position
Fig.8A



First stop
Fig.8B



Second stop
Fig.8C

4.2 Reverse technique

The reverse technique is suitable for dispensing liquids having high viscosity or a tendency to foam easily. The technique is also recommended for dispensing very small volumes. This is achieved by filling and emptying the tip.

1. Depress the operating button all the way down to the second stop (Fig. 8C).
2. Dip the tip under the surface of the liquid about 2-3mm deep and slowly release the operating button(Fig. 8A). This action will fill the tip. Withdraw the tip from the liquid touching it against the edge of the container to remove excess liquid.
3. Deliver the preset volume by gently depressing the operating button to the first stop (Fig.8B). Hold the operating button at the first stop. Some liquid will remain in the tip and should not be included in the delivery.
4. The remaining liquid is either discarded with the tip or pipette back into the container.

5.PIPETTING RECOMMENDATIONS

- ◆ Hold the thumb button vertically when aspirating the liquid and place the tip only a few millimeters into the liquid.

- ◆ Prewet tip before aspirating the liquid by filling and emptying the tip 5 times.This is important especially when dispensing liquids which have a viscosity and density different from water .
- ◆ Always control the push button movements with the thumb to ensure consistency.
- ◆ When pipetting liquids at a temperature different from ambient, prewet the tip several times before use.

6. STORAGE

When the pipette is not in use make sure it is safely stored in a vertical position.

7. CALIBRATION

Each pipette has been factory-tested and certified at 22°C according to ISO 8655/DIN 12650. The Fmax user should not exceed the Fmax by more than 100%. Note: Pipette specifications are guaranteed only with manufacturer's tips.

7.1 Checking calibration

Weighing should take place at 20-25°C, constant to 0.5°C. Avoid drafts

- ◆ Set the desired testing volume of your pipette.
- ◆ Carefully fit tip onto the tip cone.
- ◆ Prewet tip with distilled water by pipetting the selected volume 5 times.
- ◆ Carefully aspirate the liquid, keeping the pipette vertical.
- ◆ Pipette distilled water into a tared container and read the weight in mgs.Repeat at least five times and record each result. Use an analytical balance with a readability of 0.01 mgs. To calculate the volume, divide the weight of the water by its density(at 20°C : 0.9982).
- ◆ Calculate the F-value by using the following equation:
 $F = | \text{inaccuracy} (ul) | + 2 \times \text{imprecision} (ul)$
- ◆ Compare the calculated F-value to the corresponding Fmax user. Otherwise check both your accuracy and precision , when necessary, proceed to recalibration procedure.

7.2 Recalibration

- 1.Place the calibration tool into the holes of the calibration adjustment lock(under the operating button)(Fig.9).
- 2.Turn the adjustment lock anticlockwise to decrease and clockwise to increase the volume.
- 3.Repeat performance test procedure form step 1 until the pipetting results are correct.



Fig.9

8.MAINTENANCE

To maintain the best results from your pipette each unit should be checked every day for cleanliness. Particular attention should be paid to the tip cones. The pipettes have been designed for easy in-house service. However, we also provide complete repair and calibration service. Please return your pipette to your local representative for repair or recalibration. Before returning, please make sure that it is free from all contamination. Please advice our Service Representative of any hazardous materials which may have been used with your pipette .

Note: Check the performance of your pipette regularly e.g.every 3 months and always after in-house service or regularly.

8.1.Cleaning your pipette

To clean your pipette, use ethanol and soft cloth or lint-free tissue. It is recommended to clean the tip cone regularly.

8.2.In-house maintenance

- 1.Hold down the tip pipette.
- 2.Place the tooth of the opening tool between the tip ejector and the tip ejector collar to release the locking mechanism. (Fig.10)
- 3.Carefully release the tip ejector and remove the ejector collar.
- 4.Place the wrench end of the opening tool over the tip cone, turning it anticlockwise. Do not use any other tools . (Fig.11)
- 5.Wipe the piston, the O-ring and the tip cone with ethanol and a lint-free cloth.

Note: Models up to 10µl have a fixed O-ring locked inside the tip cone. Therefore, the O-ring cannot be accessed for maintenance.

6.Before replacing tip cone it is recommended to grease the piston slightly using the silicone grease provided.

Note: Excessive use of grease may jam the piston.

- 7.After reassembling use the pipette (without liquid) several times to make sure that the silicone grease is spread evenly.
- 8.Check the pipette calibration.

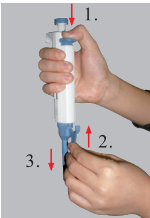


Fig.10

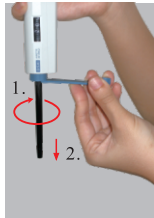


Fig.11

9. TROUBLE SHOOTING

The accompanying table is a guide to possible problems and their solutions.

Trouble	Possible cause	Solution
Droplets left inside the tip Leakage or pipetted volume too small	Unsuitable tip	Use original tips
	Non-uniform wetting of the plastic	Attach new tip
	Tip incorrectly attached	Attach firmly
	Unsuitable tip	Use original tips
Push button jammed or moves erratically	Foreign particles between tip and tip cone	Clean the tip cone, attach new tip
	Instrument contaminated	Clean and grease O-ring and piston, clean the tip cone
	Insufficient amount of grease on piston and O-ring	Grease accordingly
	O-ring not correctly positioned or damaged	Change the O-ring
Pipette blocked, aspirated volume too small	Incorrect operation	Follow instructions carefully
	Calibration altered or unsuitable for the liquid	Recalibrate according to instructions
	Instrument damage	Send for service
Tip ejector jammed or moves erratically	Piston contaminated	Clean and grease O-ring and piston, clean the tip cone
	Penetration of solvent vapours	

10.WARRANTY INFORMATION

The pipettes are warranted for one year against defects in materials and workmanship. Should it fail to function in any period of time, please contact your local representative immediately. The warranty will not cover defects caused by normal wear or by using the pipette against the instructions given in this manual.

Each pipette is tested before shipping by the manufacturer. The pipette you have purchased is ready for use.



Chongqing New World Trading Co.,Ltd

Address: Room 1001,Unit 2,No.88,Jianxin East Road, Jiangbei District,Chongqing, China

Tel: 0086-023-67728212

Fax:0086-023-67728109

Universal Filter Pipette Tips With Box

Introduction :

Filter Pipette Tips are racked, sterile and universal-fit. They are the recommended filtered pipette tips for different brand pipettors. They are also compatible with Thermo, Brand, Eppendorf, Gilson and Rainin micropipettes. Our filter tips offer extra protection from contamination by use of a barrier between the tipcone of the pipette and the sample.

Specifications :

Made of high quality polypropylene material

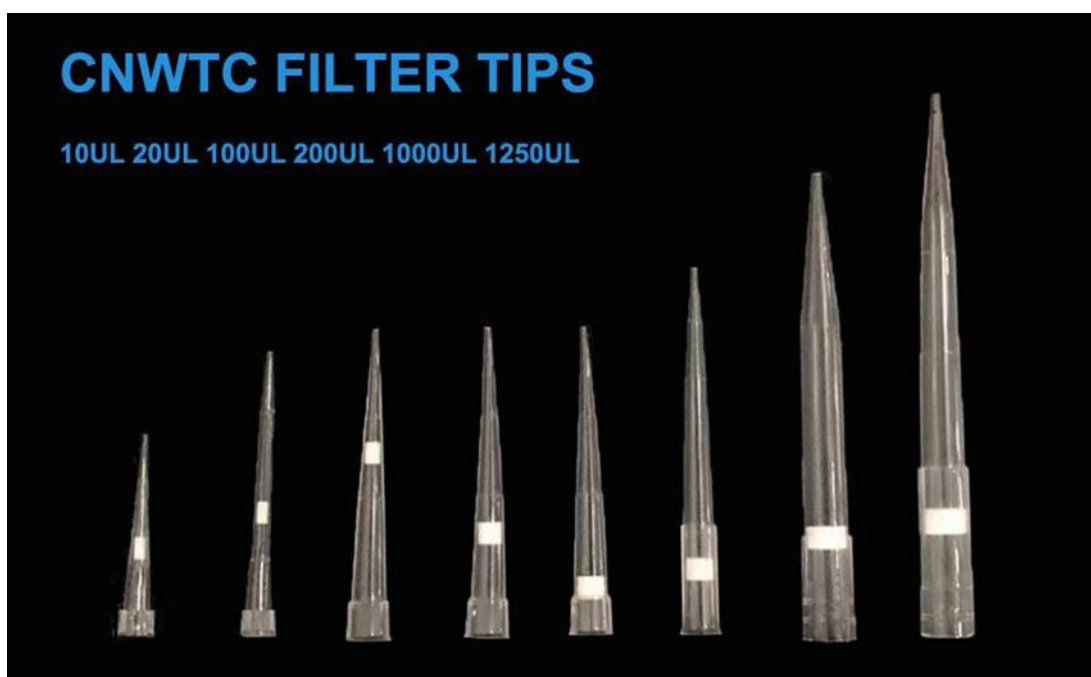
Unique long tube mouth design makes fluid transfer more accurate

With super hydrophobicity, the hydrophobic filter element forms a barrier to aerosols, eliminating the risk of cross-contamination;

Suitable for commonly used pipettes on the market, with optimized aperture to ensure smooth sample extraction; (at 121°C for 20 min);

Code	Volume	Type	Material	Color	Packing
TYM-10	10ul	DNASE RANSE FREE	PP	Transparent	96pcs/box, 10boxes/middle box, 50boxes/ctn
TYM-50	50ul				
TYM-100	100ul				
TYM-200	200ul				
TYM-1000	1000ul				
TYM-1250	1250ul				

Details





Chongqing New World Trading Co.,Ltd

Address: Room 1001,Unit 2,No.88,Jianxin East Road, Jiangbei District,Chongqing, China

Tel: 0086-023-67728212

Fax:0086-023-67728109

Feature:

1. Manufactured from high-density, inert Ultra-high-molecular-weight polyethylene
- 2.Provides a strong barrier against contamination while not impeding airflow
- 3.Hydrophobic properties prevent absorption of samples
- 4.Certified free of RNase, DNase, DNA, PCR inhibitors and pyrogen-free

Coco Jiang

