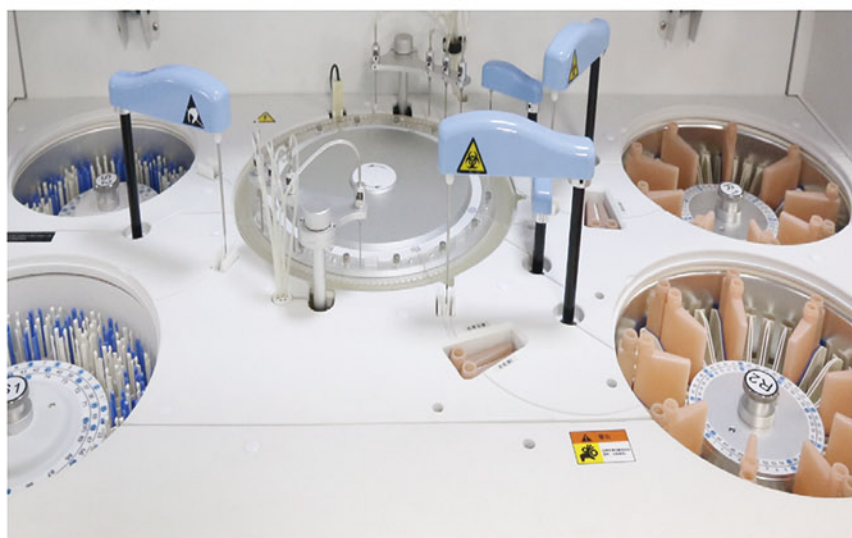


# Automatic Chemistry Analyzer

## 01

### Reaction Module

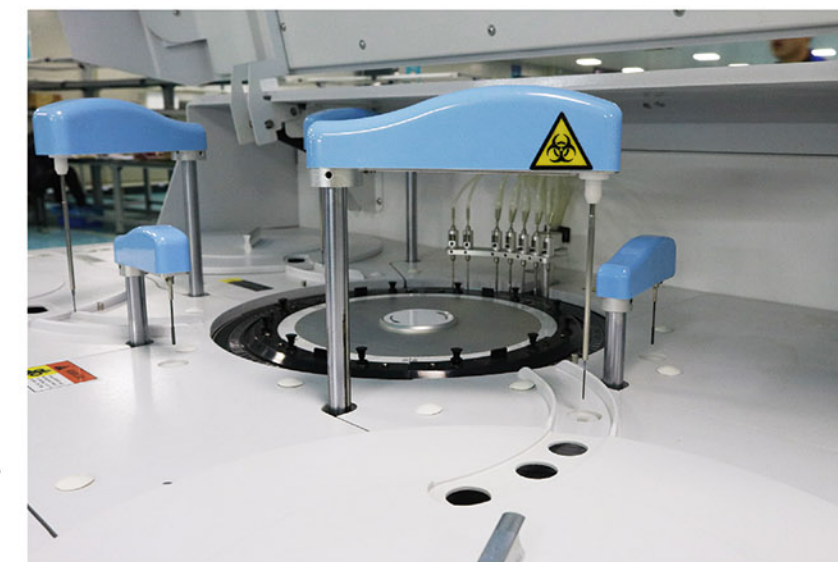
Long lifetime halogen lamp,  
stable light source.  
340, 405, 450, 480, 505, 546, 570, 600,  
630, 700, 750, 800nm twelve  
wavelength filters.  
37°C stable incubation system.



## 03

### Accurate Sample & Reagent Adding System

Accurate sampling pump, sample adding  
0.1µl stepping, reagent adding 1µl stepping.  
Sample & reagent probes with liquid level  
sensor and anti-collision functions.



## 02

### Functional Software

Sample information batch and  
combination input quickly and easily.  
24 hours working, with STAT function.  
Special designed software surface for  
engineer to monitor whole instrument  
status clearly.  
LIS system available.



## 04

### Sample and Reagent Tray

Reagent tray with 24 hours cooling system.  
Reagent volume real-time detection, with  
remaining volume display online.



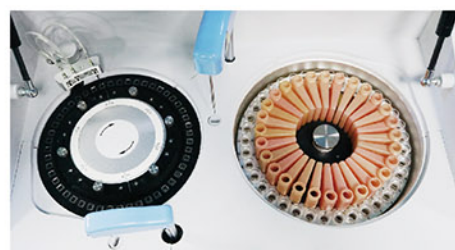


# 200T/H Automatic Chemistry Analyzer BK-200 (Previous BK-200mini)



## Overall appearance:

One probe for reagents and samples;  
One mixer; Washing probe.

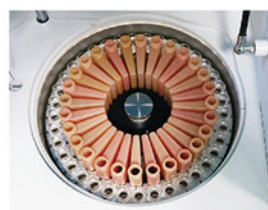


## Features:

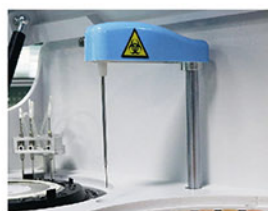
- ①. 37 Sample positions.
- ②. 28 Reagent positions.
- ③. 48 Reaction cuvettes.
- ④. 200 Tests per hour.
- ⑤. Probe with anti-collision function, liquid level detection function.



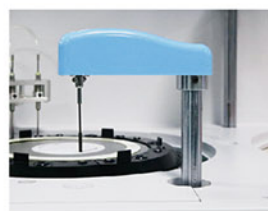
**Reaction Tray**  
37±0.2°C,  
real-time monitor.



**Reagent Tray**  
Refrigerated tray with  
independent switch.



**Sample Needle**  
Liquid level sensor function.  
Anti-collision function. Reagent  
volume real-time detection.



**Mixer Probe**  
Teflon coating to avoid  
cross contamination.



**Washing Probe**  
Independent 3-step  
washing system.



**LAN Port  
Access**

## Parameters:

| Model                   | BK-200                |  |
|-------------------------|-----------------------|--|
| Overall Performance     | Throughput            | 200 Tests/hour   |
|                         | Analysis Method       | End-point, Fixed-time, Rate(Kinetic)   |
|                         | Certificates          | CE, FDA, ISO9001, ISO13485   |
| Sample & Reagent System | Sample Positions      | 37 sample positions  |
|                         | Reagent Positions     | 28 reagent positions   |
|                         | Sample Volume         | 2~70µl   |
|                         | Reagent Volume        | 20~350µl   |
|                         | Probe                 | Teflon coating, with anti-collision function, liquid level detection function  |
|                         | Probe Washing         | Automatic washing interior and exterior  |
|                         | Reagent Cooling       | Refrigerated tray with independent switch  |
| Reaction System         | Temperature Control   | 37±0.2°C   |
|                         | Cuvettes              | 48 reusable cuvettes, optical length 6mm   |
|                         | Mixer Probe           | Independent stirring   |
|                         | Washing               | Automatic cuvettes washing   |
|                         | STAT Function         | YES  |
| Optical System          | Light Source          | 6V/10W halogen lamp  |
|                         | Spectrophotometry     | Post-spectral spectrophotometry  |
|                         | Wavelength            | 340, 405, 450, 480, 505, 546, 570, 600, 630, 700, 750, 800nm   |
|                         | Absorbance            | 0~3.0Abs   |
| Calibration & QC        | Calibration           | Linear: K factor, 1-point, 2-point and multipoint linear<br>Non-Linear: Spline, Polygon, Index, Ogarithm, Logit-4P, Logit-5P |
|                         | Quality Control       | Real-time QC, Westgard multi rule, Cumulative sum check, Twin Plot(2D)   |
| Data Management         | Software              | Windows 7/8/10, 32 or 64 bit   |
|                         | LIS System            | Bi-direction, support HL7 protocol   |
|                         | Interface             | LAN port access  |
|                         | Printer               | External, multiple reporting mode available  |
| Working Conditions      | Power Supply          | AC220V±10%, 50/60Hz, 110V±10%, 60Hz, 300W  |
|                         | Temperature           | 15~30°C  |
|                         | Water Consumption     | Deionized water: <5L/H   |
|                         | Humidity              | 40%~85%  |
| Size & Weight           | External Size (W*D*H) | 625*425*460mm  |
|                         | Net Weight            | 36kg   |
|                         | Package Size (W*D*H)  | 728*530*884mm  |
|                         | Gross Weight          | 55kg   |

# Semi-auto Chemistry Analyzer

## BIOBASE-Silver



### Features:

- ①. Easy operation by one button.
- ②. End point, kinetic, fixed time, rate, etc.
- ③. Filter wavelength: 340/405/450/510/546/578/630nm, 2 more open filter positions, others on request.
- ④. With 20 incubating positions.
- ⑤. Large Memory to store 144 test programs and 5600 testing results.
- ⑥. Excellent Q.C function, Q.C chart can be stored, displayed and printed.
- ⑦. 37°C temperature in flow cell and incubating.
- ⑧. Real time graph can be displayed and printed.

### Parameters:

| Model                 | BIOBASE-Silver   |
|-----------------------|--|
| Reading cuvette       | Quartz cuvette; Both through cell and direct reading cuvette         |
| Incubating positions  | 20 incubating positions  |
| Photometric System    | Light source: 6V, 10W long life halogen lamp                         |
|                       | Filters: 340/405/450/510/546/578/630nm, 2 more open filter positions |
|                       | Wavelength accuracy: $\pm 2\text{nm}$                                |
| Measuring System      | Measuring range: 0~3.500O.D.   |
|                       | Photometric linearity: $\pm 2\%$ from 0 to 2.500 O.D.                |
|                       | Photometric accuracy: $\pm 2\%$ from 0 to 2.500 O.D.                 |
|                       | Drift<0.005 O.D.   |
| Incubator Temperature | R.T. 25°C, 30°C, 37°C  |
| Control               | Precision: $\pm 0.1^\circ\text{C}$                                   |
| Display               | Touch Screen   |
| Printer               | Built-in thermal printer   |
| Interface             | RS-232, USB  |
| Power Supply          | AC110/220V $\pm 10\%$ , 60/50Hz                                      |
| External Size(W*D*H)  | 400*380*200mm  |
| Packing Size(W*D*H)   | 500*530*350mm  |
| Gross Weight          | 12kg   |