

Strengthen the Core of Your Dissolution Workflow

Agilent 708-DS Dissolution Apparatus





The Established Standard for Dissolution Performance

Dissolution analysis is crucial to effective drug development. A streamlined approach that delivers results based on your product is critical to maintaining efficiency and avoiding unnecessary delays. Whether you need to test oral dosage forms, topicals, implants, transdermal patches, or medical devices, the Agilent 708-DS Dissolution Apparatus delivers ultimate flexibility. Its modular design incorporates manual, semi-automated, and online innovations to meet your changing laboratory needs.

Conforming to international pharmacopeia specifications for apparatus 1, 2, 5, 6, and intrinsic dissolution, the 708-DS accommodates tablets, capsules, transdermal and semisolid formulations. Its flexible design allows you to use different vessel volumes—as well as automate and document key functions for every dissolution test.



Easily tailor the Agilent 708-DS to suit your application.

Create your own 708-DS

The 708-DS features a smooth-operating, motorized lift for reproducibility and integration with automated systems. You can easily configure your apparatus with features that meet your laboratory requirements:

- Media temperature monitoring (AutoTemp)
- Dosage delivery module (DDM)
- Automated sampling
- A range of vessels, baskets, paddles, and shafts
- Optional integrated printer

Empower Everyone in Your Lab

Of all the tests performed by your pharmaceutical lab, the dissolution test ensures that your products meet the appropriate release criteria. Given the amount of work required to execute dissolution experiments and interpret data, your entire lab can benefit when everything is working smoothly.

Your platform should be user-friendly and scalable, so that automation can be easily implemented as needs change. Automation also frees up analysts to spend more time designing experiments and analyzing data. In addition, when everything is working as it should, lab managers and executives can focus on keeping timelines and improving business performance. The Agilent 708-DS Dissolution Apparatus helps your lab meet all of these goals.

Analysts: Need to be sure that you're performing every dissolution test properly?

The 708-DS combines key design elements to help you deliver mission-critical information with confidence.



Simplicity

Intuitive setup and monitoring via touch screen or software make it easy to execute daily tests and learn new techniques quickly.

Troubleshooting

Automation of key steps reduces variability, while enhanced messaging and alerts ease data investigations.

Documentation

Integrated or software-based test information is electronically recorded—saving you time and limiting manual transcription errors.

Lab managers:
Want to manage resources
to better meet laboratory
objectives and schedules?

Maximize efficiency with enhanced manual dissolution, combined with semi-automated and online access features.



Productivity

Scalable capabilities meet your lab's current and future needs, while easy-to-implement automation reduces variability and improves efficiency.

Reliability

Minimize downtime with proven instrumentation supported by experienced specialists and engineers.

Compliance

Built-in controls and traceability help your lab conform to regulations. You can also ease the burden of audits with Agilent dissolution software.

Executives:
Ready to improve your overall
business performance?

The 708-DS is surrounded by hardware, software, and accessories that enable you to make sound decisions.



Confidence

More than 30 years of dissolution industry experience and a worldwide team of experts support your development, scale-up, and training.

Return on investment

Reduce day-to-day errors, automate key operations, and avoid costly downtime and investigations.

Security

You can depend on Agilent hardware and software for years to come because we've been meeting worldwide regulations for decades.

Enhance Your Dissolution Experience

An unrivaled range of standard and optional features maximize flexibility, and contribute to the superior performance of the 708-DS. So you can confidently execute standard pharmaceutical methods and applications that require regulatory compliance.

Color touch screen

for easy interaction and real-time feedback

Motorized manifold*

to control precise sampling location

Automated dosage delivery module (DDM)*

Ring indicator

for repeatable vessel orientation

TruAlign vessels

available in 100, 200, 250, 1000, and 2000 mL

Angled water bath

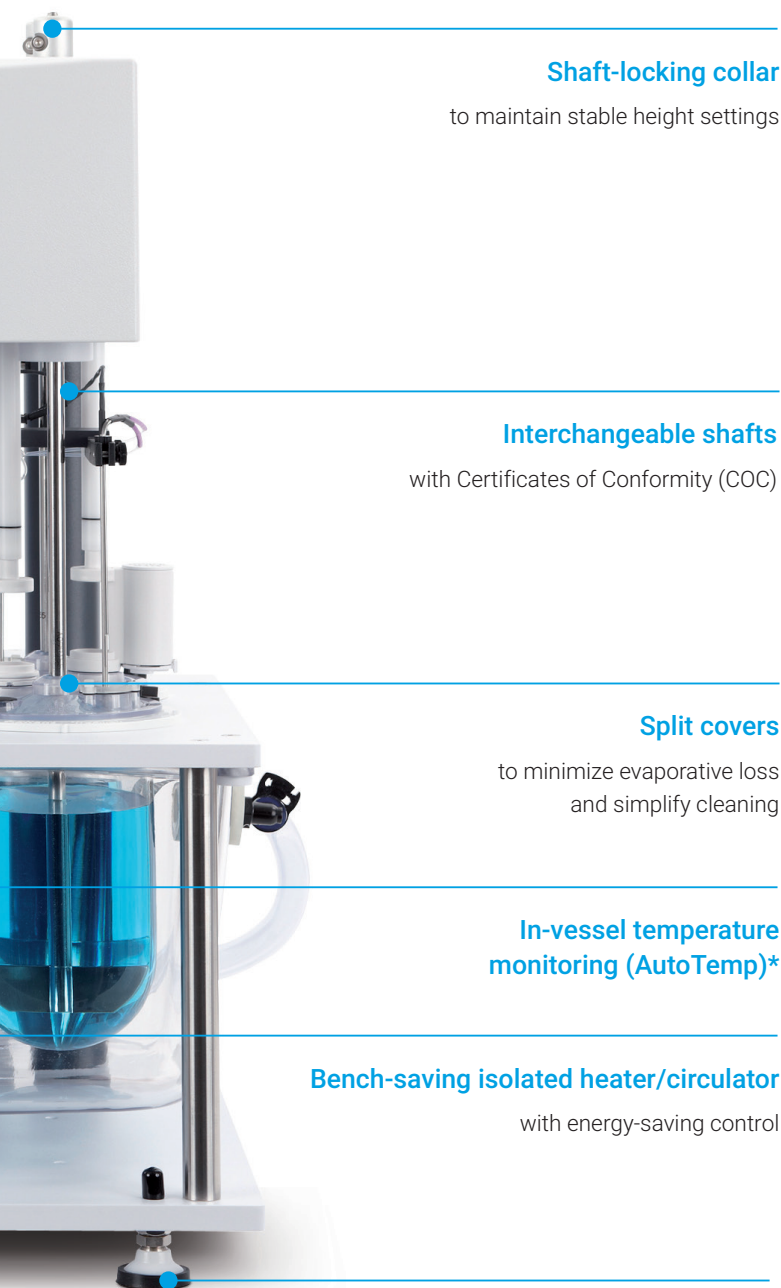
for complete draining and cleaning

Quick-connect water bath drain

simplifies emptying



*Optional



Shaft-locking collar

to maintain stable height settings

Interchangeable shafts

with Certificates of Conformity (COC)

Split covers

to minimize evaporative loss
and simplify cleaning

In-vessel temperature monitoring (AutoTemp)*

Bench-saving isolated heater/circulator

with energy-saving control

Vibration-dampening feet

to limit environmental impact

Enhanced firmware features make it easy to achieve consistent, reliable dissolution results

Programmable settings

to meet regulatory and
internal requirements

Function	1	2	3
Methods: Create / Edit / Delete	✓	✓	✓
Lock Screen	✓	✓	✓
Alarms: Timer & Pause Duration	✓	✓	✓
Due Dates: Calibration & PM	✓	✓	✓
Diagnostics	✓	✓	✓
Instrument: LCD, Date/Time, Align Screen	✓	✓	✓
Instrument: Comm ID, All Pos. Spin, Men. Config	✓	✓	✓
Instrument: Tolerances, Vessels, Enables	✓	✓	✓
Instrument: Energy Save	✓	✓	✓

1: Administrator, 2: Advanced User, 3: User

Custom user levels

to control instrument access

Sampling and maintenance alarms

Programmable sampling depth

based on exact
test conditions
eliminates variability



Built-in printer*

to document
critical test details

*Optional

Build Your Dissolution Workflow

Agilent systems meet the guidance outlined in pharmacopoeias worldwide, and integrate the latest technologies to suit your applications.



Manual dissolution testing

The 708-DS is perfect for manual sampling—as well as varying levels of automation. With automated dosage delivery, precise sampling position control, and temperature monitoring, you can easily increase productivity and reduce analyst variability.

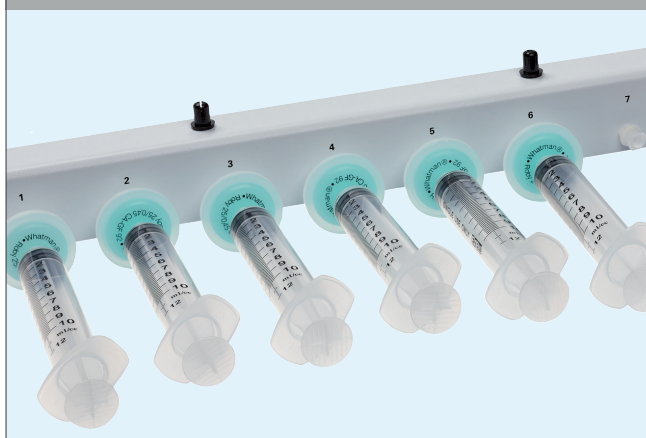
Make manual sampling easy

with increased method storage and sampling through evaporation covers



Attach manual sampling bracket

for convenient, repeatable sampling (use with the motorized manifold or resident probes)



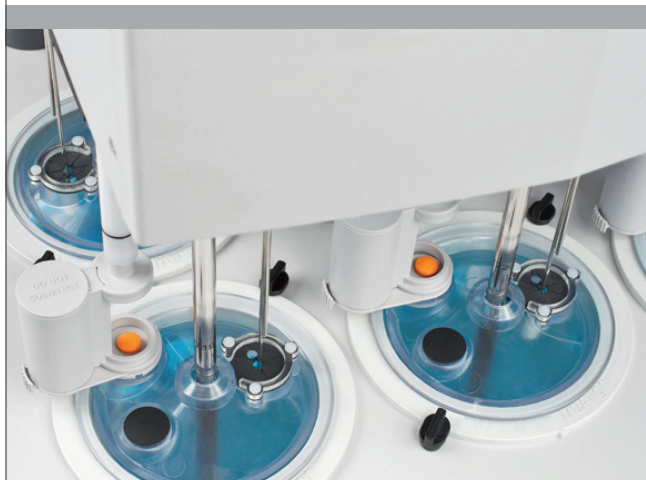
Support small- and large-vessel volumes

in manual, semi-automated, and online systems



Start the DDM manually or automatically

for easy, repeatable dosage form introduction



Semi-automated dissolution testing

Configure the 708-DS with the Agilent 850-DS Dissolution Sampling Station to reduce variability and improve sample throughput efficiency. The 850-DS includes an integrated syringe pump, media replacement, and filtration capabilities.

Automate sampling and filtration

using the 850-DS Dissolution Sampling Station and optional filtration module



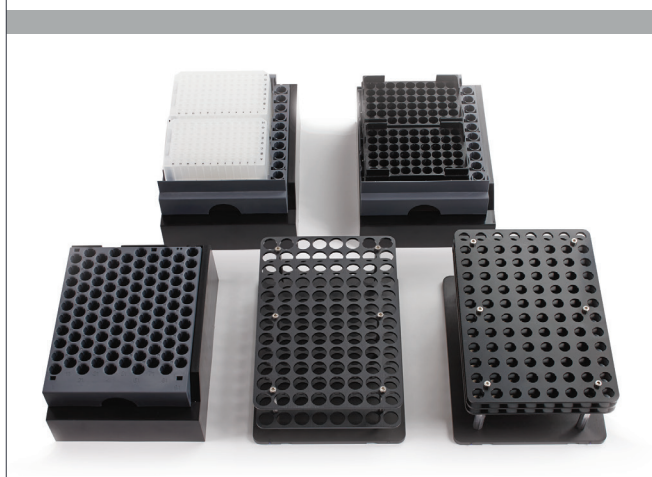
Collect samples

into test tubes, HPLC vials, or microplates for subsequent analysis



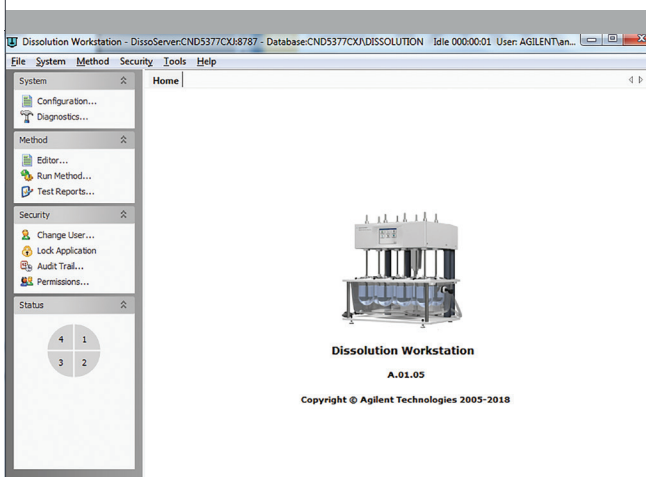
Eliminate manual vial transfer

using Agilent HPLC sample trays



Enhance compliance

and go paperless with Dissolution Workstation Software

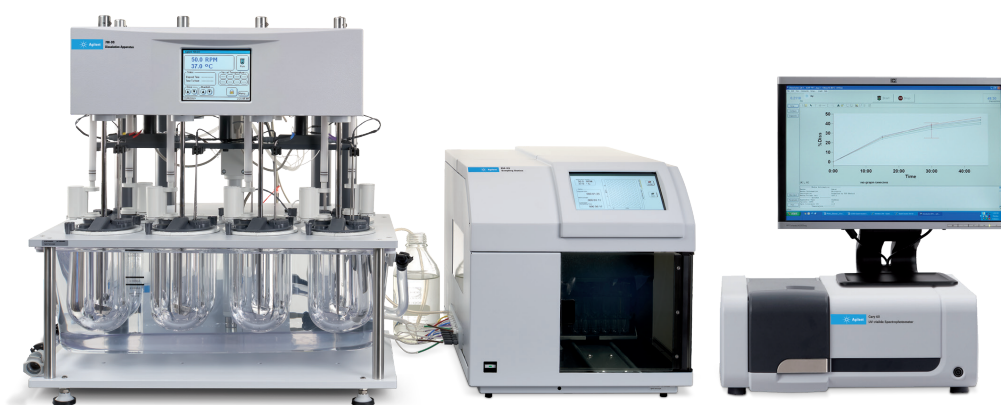


Online dissolution testing

You can combine the Agilent Cary 60 UV-Vis spectrophotometer with the 708-DS in an online UV dissolution system with multicell or fiber optic configurations.

Couple the Cary 60 spectrophotometer with a peristaltic pump or the 850-DS

for sample archival or offline HPLC sample collection—a combination suitable for a single- or dual-system setup



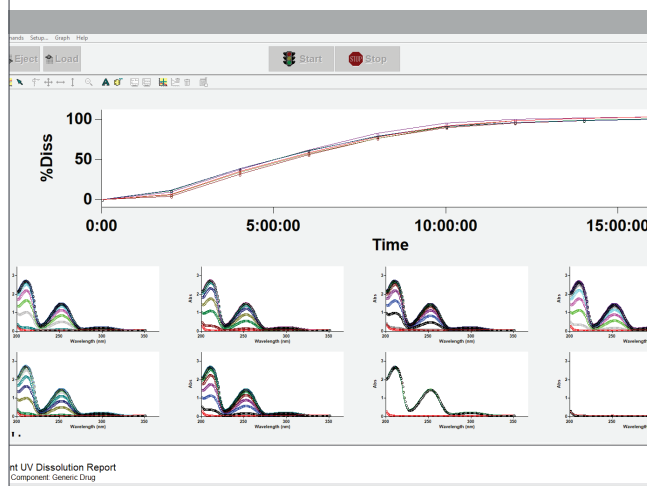
Select fiber optic capabilities

for enhanced dissolution profiles and *in situ* dissolution sample analysis



Enhance compliance and efficiency

by automating calculations and report generation with Agilent Cary WinUV Dissolution Software



Keep Your Experiments Under Surveillance with dissoGUARD

Visual observation allows you to assess the initial disintegration or physical characteristics of the dosage form during the dissolution process. But what if you didn't have to constantly view and manually record your observations?

DissoGUARD makes it possible

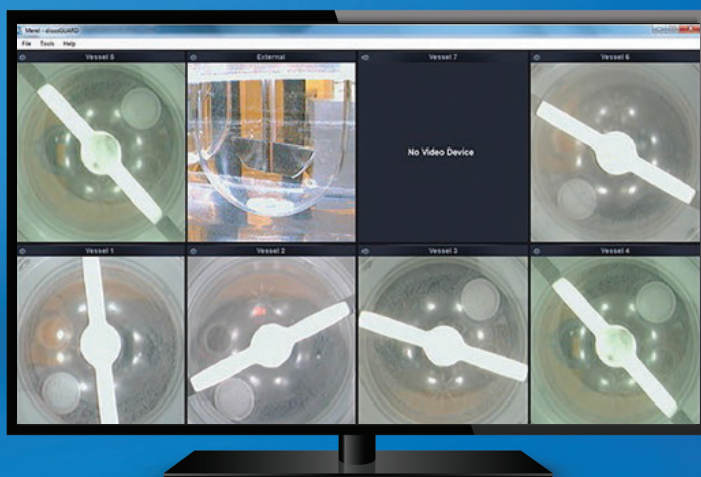
This hardware and software package contains multiple cameras mounted in a single enclosure, which is placed beneath the water bath. So you get an unobstructed view of the dosage form in the vessels. An external camera provides a separate viewing perspective.

In addition, dissoGUARD:

- Gives you a real-time view of what's happening, and lets you choose from preset recording options.
- Marks videos or snapshots with key events—such as dosage introduction, sampling, or unusual behavior—and exports the files for later viewing or storage.
- Provides information about key physical parameters such as rpm, vessel-to-shaft centering, and wobble.
- Alerts you to any parameter status abnormalities during a test, saving you time and helping you investigate failures.



Innovative lighting system and shield with white/red LEDs lets you observe light-sensitive products.



Video surveillance with dissoGUARD

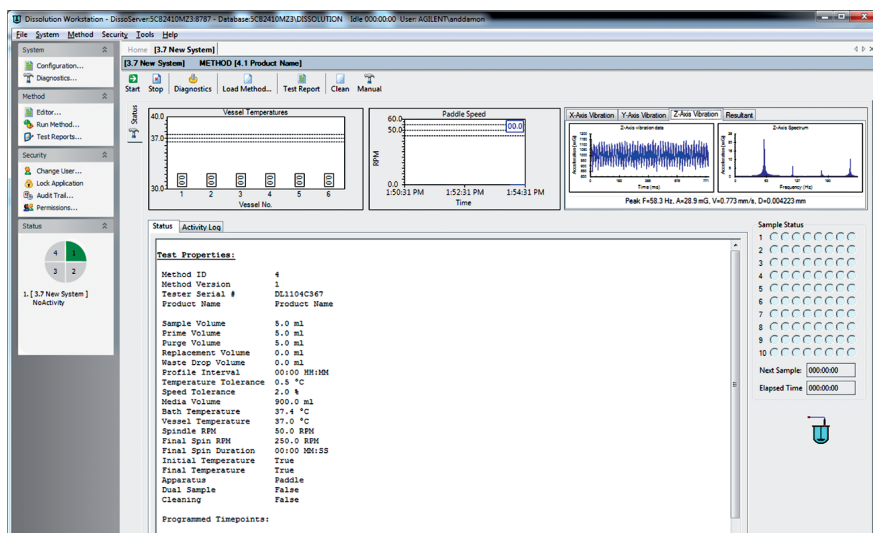
Ideal for confirming dosage introduction and sampling, as well as video documentation of uncharacteristic behaviors that may explain unexpected results.

Stay in Control with Dissolution Workstation Software

Agilent Dissolution Workstation Software provides complete control of multiple dissolution systems from a single computer. It integrates the 708-DS with automated sampling components, allowing you to simultaneously control up to four systems from a desktop PC.

What are the advantages of Dissolution Workstation Software?

- **Timesaving.** Consolidate and maintain your dissolution systems, methods, and data in one paperless, centralized database with options for exporting information. You can also build, edit, search, retrieve, and archive dissolution methods and test reports from a single interface.
- **Compliant.** Be confident knowing that the software maintains a continuous activity log for the method in use. It also provides audit trails of method and/or configuration changes for a 21 CFR Part 11 compliant environment.
- **Secure.** Access, organize, and protect your data using integrated Microsoft Windows security. The software includes features designed for easy data export and integration with LIMS or electronic notebooks.



The 280-DS instrument module, together with Dissolution Workstation Software, monitors vibration during your dissolution tests.

Minimize—or Eliminate—Variability and Ensure Compliance

Regulatory requirements suggest performing either an enhanced mechanical qualification (MQ), or a verification of the physical parameters coupled with the USP performance verification test (PVT). Now it's easier to do both.

The 708-DS, together with the patented Agilent 280-DS Mechanical Qualification System (MQS), simplifies qualification and easily verifies all physical parameters. Once the vessel module is installed, sensing technology enables hands-free, noncontact measurements with no guesswork involved. All values are automatically recorded in a fraction of the time typically associated with this procedure.

The 280-DS can be integrated with any Windows-based laptop, and its software prompts you through each measurement with easy-to-follow instructions. In addition, the software eliminates the need to manually begin rotation for spindle speed, wobble, or vibration measurements.

Innovative modules ensure confident qualification

The 280-DS modules provide accurate, repeatable measurements with limited hands-on interaction.



280-DS instrument module

- Level
- Vibration
- Temperature



280-DS vessel module

- Spindle speed (rpm)
- Basket/shaft wobble
- Basket/paddle height
- Vessel-to-shaft centering
- Vessel verticality
- Shaft verticality

Partner with Agilent to Meet Your Dissolution Workflow Challenges

Service and qualification: Focus on what you do best

Let our experienced, highly trained engineers and chemists provide you with Installation and Familiarization, hardware and software training, and complete qualification services.

Together, we can help you meet your needs for:

- Instrument maintenance and repair
- Regulatory compliance
- Software and data systems
- Training and educational services



Want to learn more?

Contact an Agilent representative, or submit a request on [explore.agilent.com/hotline](https://www.agilent.com/explore/hotline)

Here's why you should join the Agilent Dissolution Community

No matter which brand of dissolution apparatus you use, our Community lets you:

- Get the latest information about apparatus, online analysis, and software.
- Review application notes, calculators, troubleshooting guides, and white papers.

Simply go to www.agilent.com/chem/dissolution-community

Learn more:

www.agilent.com/chem/dissolution

Find a local Agilent customer center in your country:

www.agilent.com/chem/contactus

U.S. and Canada

1-800-227-9770

agilent_inquiries@agilent.com

Europe

info_agilent@agilent.com

Asia Pacific

inquiry_lsca@agilent.com

DE.4738310185

This information is subject to change without notice.

© Agilent Technologies, Inc. 2020
Published in the USA, August 20, 2020
5994-1936EN

