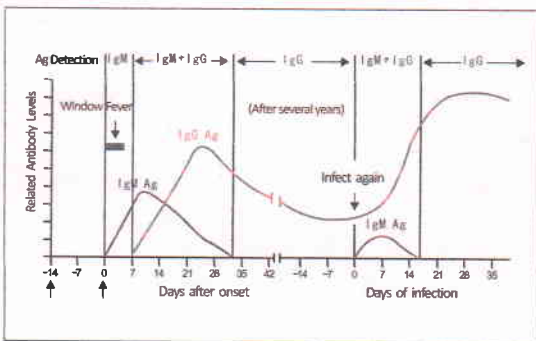


What is COVID-19

The novel coronaviruses belong to the β genus. COVID-19 is an acute respiratory infectious disease. People are generally susceptible. Currently, the patients infected by the novel coronavirus are the main source of infection; asymptomatic infected people can also be an infectious source. Based on the current epidemiological investigation, the incubation period is 1 to 14 days, mostly 3 to 7 days. The main manifestations include fever, fatigue and dry cough. Nasal congestion, runny nose, sore throat, myalgia and diarrhea are found in a few cases.

The advantages of COVID-19 IgG/IgM detection



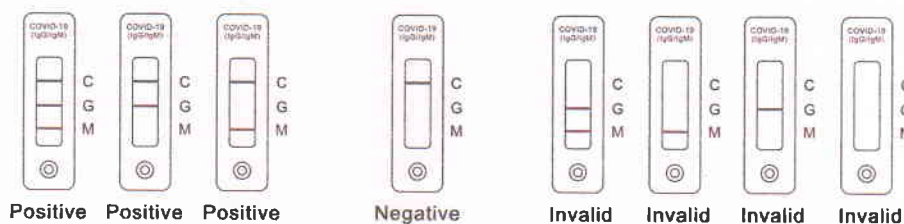
- After the human body is infected with the virus, the body first produces IgM, following by a large amount of IgG.
 - The detection of IgM in the blood indicates a recent infection, used for early diagnosis of infection.
 - IgG is produced late and lasts for a long time, used as an indicator of previous infection.
- Detection of IgG/IgM helps to judge different stages of viral infection.

Testing Method and Result Interpretation

Testing Method:

- Recover the test specimen and reagents to room temperature
- Tear the outer package and take out test card
- Take 10ul specimen into the sample well, and immediately add 2 drops of diluents
- Let stand for 10 to 15 minutes to observe the results

Result Interpretation:



Product specification:

Composition	Package
Composition	25 Tests/Kit
Test Card	25 Pieces
Specimen Diluents (3mL/bottle)	1 Bottles
Instruction of Use	1 Set

