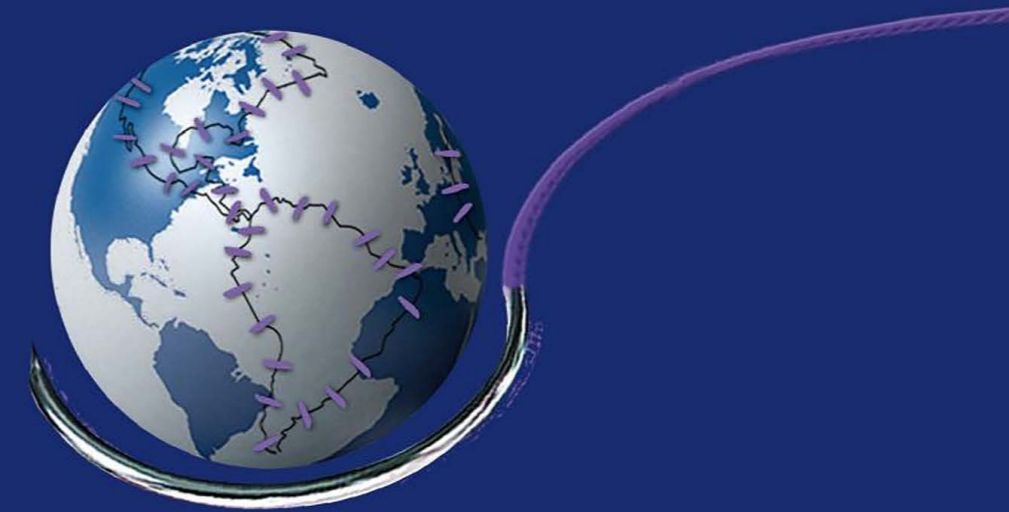


<http://www.suturescn.com/index/product/index/id/15.html>

**RT<sup>®</sup>ED**  
**SUTURE**



## 山东海迪科医用制品有限公司

SHANDONG HAIDIKE MEDICAL PRODUCTS CO.,LTD.

Add: Tianfu Road, Dongcheng District, Shan County, 274300

Heze City, Shandong Province, China.

Tel: +86-530-4660062

Mobile: +86-13105409308

E-mail: [info@suturescn.com](mailto:info@suturescn.com)

Web: [www.suturescn.com](http://www.suturescn.com)



SHANDONG HAIDIKE MEDICAL PRODUCTS CO.,LTD.

山东海迪科医用制品有限公司

Shandong Haidike Medical Products Co., Ltd. is a leading and world famous medical devices manufacturer with ISO13485, ISO14001, ANVISA GMP, CE, FDA, TGA, FSC and NMPA certificates. "RTMED" and "Haidike" are registered trademark and protected under the Madrid Agreement. Our medical devices have been registered in more than 20 countries and exported to more than 150 countries and owning good reputation all over the world!

- ◆ Absorbable and nonabsorbable Surgical sutures
- ◆ Lifting threads for plastic surgery
- ◆ Hernia repair meshes
- ◆ Orthopedic casting tapes & splints
- ◆ Electric Wheelchair & Manual Wheelchair
- ◆ Veterinary surgical supplies
- ◆ Medical protection products etc.



ENTERPRISE BUSINESS LICENSE



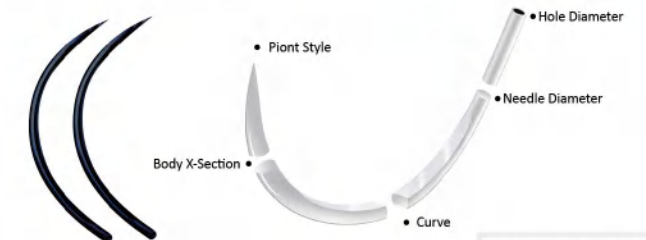
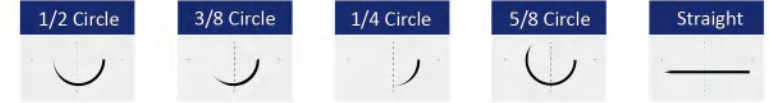
MEDICAL DEVICE MANUFACTURING PERMIT



GOLD PLUS SUPPLIER SGS ASSESSMENT CERTIFICATE



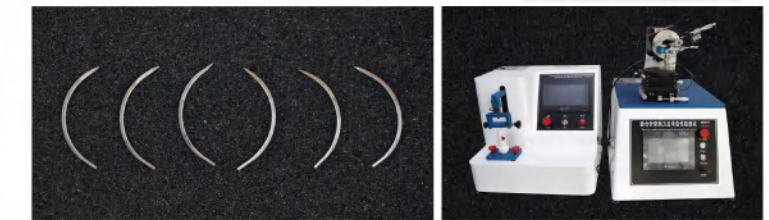
### Needle Shapes



### Advantages

- 1 Strong hardness
- 2 Outstanding sharpness
- 3 Excellent tenacity and ductility

- Round bodied (heavy)
- ▲ Curved cutting (heavy)
- ▼ Reverse cutting (heavy)
- ⊗ Taper cutting
- ▼ Microfine spatula
- ⊙ Blunt point
- Straight round bodied
- ▲ Straight curved cutting



FSC BY EUROPEAN UNION



CE CERTIFICATE



ISO13485 CERTIFICATE



ISO14001 CERTIFICATE



SURGICAL SUTURES 510K



BGMP



FREE SALE CERTIFICATE



RTMED MADRID TRADEMARK

## PGA POLYGLYCOLIC ACID



### Properties:

Structure: Multifilament, Braided  
 Colour: Violet, Undyed  
 Chemical composition: Polyglycolic acid  
 Coating: Polycaprolactone + Calcium Stearate  
 Sizes: USP 8/0 - USP 4  
 Type of absorption: Hydrolysis  
 Sterilization: Ethylene Oxide  
 Absorption: 60 - 90 days

### Advantages:

- High initial tensile strength
- Excellent knotting ability
- Reliable absorbability
- Easy to handle
- Outstanding holding power through the critical wound periode
- Smooth surface, slides smoothly through the tissue



## PGLA POLYGLACTIN 910



### Properties:

Structure: Multifilament, Braided  
 Colour: Violet, Undyed  
 Chemical composition: Poly(glycolide-co-l-lactide 90/10)  
 Coating: Poly(glycolide-co-l-lactide 30/70) + Calcium Stearate  
 Sizes: USP 8/0 - USP 2  
 Type of absorption: Hydrolysis  
 Sterilization: Ethylene Oxide  
 Absorption: 56 - 70 days

### Advantages:

- High tensile strength
- Smooth tissue passage
- Easy knotting and tie down
- Excellent knot security
- Reliable absorbability



## PDO POLYDIOXANONE



### Properties:

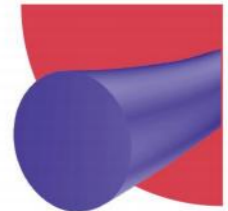
Structure: Monofilament  
 Colour: Violet, Undyed  
 Chemical composition: Poly (p-dioxanone)  
 Sizes: USP 7/0 - USP 2  
 Type of absorption: Hydrolysis  
 Sterilization: Ethylene Oxide  
 Absorption: 180 - 210 days

### Advantages:

- High initial tensile strength
- Prolonged wound support
- Minimal tissue reaction
- Lower incidence of infection and trauma due to smooth surface



## PGCL POLIGLECAPRONE 25



### Properties:

Structure: Monofilament  
 Colour: Violet, Undyed  
 Chemical composition: Poly (glycolide-co-caprolactone)  
 Sizes: USP 6/0 - USP 2  
 Type of absorption: Hydrolysis  
 Sterilization: Ethylene Oxide  
 Absorption: 90 - 120 days

### Advantages:

- High initial tensile strength
- Easy handling
- Smooth passage through tissue
- Excellent knotting ability



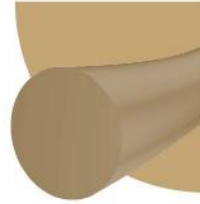
# CHROMIC CATGUT

## Properties:

Colour: Brown  
 Composition: Purified connective tissue  
 Sizes: USP 7/0 - USP 4  
 Type of absorption: Proteolysis  
 Sterilization: Gamma radiation  
 Absorption: 90 - 100 days

## Advantages:

- High tensile strength
- Excellent handling properties
- Minimal tissue reaction
- Uniform absorption



# PLAIN CATGUT

## Properties:

Colour: Beige  
 Composition: Purified connective tissue  
 Sizes: USP 7/0 - USP 4  
 Type of absorption: Proteolysis  
 Sterilization: Gamma radiation  
 Absorption: 60 - 70 days

## Advantages:

- High tensile strength
- Smooth tissue passage
- Easy knotting and tie down
- Excellent knot security
- Reliable absorbability



# SILK

## Properties:

Structure: Braided  
 Colour: Black, White  
 Composition: Natural silk filaments  
 Coating: Silicon / wax  
 Sizes: USP 8/0 - USP 4  
 Sterilization: Ethylene Oxide

## Advantages:

- Excellent handling properties
- High tensile strength
- Highly smooth and flexible
- Good knot security



# POLYPROPYLENE

## Properties:

Structure: Monofilament  
 Colour: Blue  
 Chemical composition: Polypropylene  
 Sizes: USP 7/0 - USP 3  
 Sterilization: Ethylene Oxide

## Advantages:

- High tensile strength
- Smooth tissue passage
- Easy and secure knotting
- Minimal acute inflammatory reaction in tissues
- Excellent and permanent tissue support



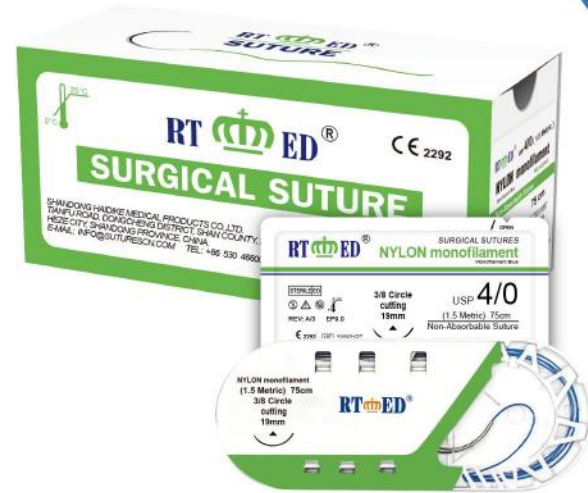
## NYLON

### Properties:

Structure: Monofilament  
 Colour: Blue, Black  
 Chemical composition: polyamide 6 - 6.6  
 Sizes: USP 12/0 - USP 4  
 Sterilization: Ethylene Oxide

### Advantages:

- High tensile strength
- Smooth tissue passage
- Easy and secure knotting
- Excellent and permanent tissue support



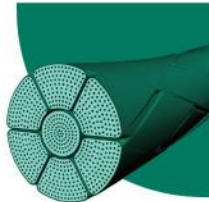
## POLYESTER

### Properties:

Structure: Braided  
 Colour: Green, White  
 Chemical composition: Polyethylene terephthalate  
 Coating: Silicon  
 Sizes: USP 6/0 - USP 4  
 Sterilization: Ethylene Oxide

### Advantages:

- High tensile strength
- Excellent handling properties
- Minimal tissue reaction
- Good knot security



## Ultra High Molecular Weight Polyethylene (UHMWPE)



### Properties:

Structure: Braided  
 Colour: White, white+blue, white+black, white+green  
 Chemical composition: Polyethylene  
 Sizes: USP 7/0 - USP 5  
 Sterilization: Ethylene Oxide

### Advantages:

- Extremely strong, flexible and smooth
- Outstanding tensile strength
- Minimal inflammatory reaction



## PTFE

### Properties:

Structure: Monofilament  
 Colour: White  
 Chemical composition: polytetrafluoroethylene  
 Sizes: USP 2/0 - 6/0  
 Sterilization: Ethylene Oxide

### Advantages:

- High tensile strength; does not weaken when moistened.
- Decreased inflammation and faster wound repair.
- Soft, comfortable for patients.
- Great handling properties and knot security.



THREADS		NEEDLES	
THREADS TYPE	THREADS	THREADS DIAMETER	THREADS LENGTH
POLYGLYCOLIC ACID (size: 5-8/0)	PGA	10/0 10	15cm A
POLYGLYCOLIC ACID RAPID (size: 5-8/0)	PGAR	9/0 90	30cm B
POLYGLYCOLIC ACID PLUS (size: 5-8/0)	PGA+	8/0 80	45cm C
POLYGLACTIN 910 (size: 2-8/0)	PGLA	7/0 70	60cm D
POLYGLYGLACTIN 910 RAPID (size: 2-8/0)	PGLAR	6/0 60	70cm E
POLYGLYGLACTIN 910 PLUS (size: 2-8/0)	PGLA+	5/0 50	75cm F
POLYDIOXANONE (size: 2-7/0)	PDO	4/0 40	90cm G
POLYDIOXANONE RAPID (size: 2-7/0)	PDOR	3/0 30	100cm H
POLYDIOXANONE PLUS (size: 2-7/0)	PDO+	2/0 20	125cm I
CHROMIC CATGUT (size: 4-7/0)	CC	0 00	150cm J
PLAIN CATGUT (size: 4-7/0)	PC	1 01	180cm K
POLIGLECAPRONE 25 (size: 2-6/0)	PGCL	2 02	200cm L
POLIGLECAPRONE 25 RAPID (size: 2-6/0)	PGCLR	3 03	250cm M
POLIGLECAPRONE 25 PLUS (size: 2-6/0)	PGCL+	4 04	300cm N
SILK (size: 4-6/0)	SK		400cm O
NYLON (size: 4-12/0)	NL		50cm P
POLYPROPYLENE (size: 3-7/0)	PP		
POLYESTER (size: 4-7/0)	PB		
Ultra High Molecular Weight Polyethylene (UHMWPE) (size: 5-7/0)	UHMWPE		
PTFE (size: 2/0-6/0)	PTFE		

NEEDLES	NEEDLES
● 1/2 circle round bodied	01
● 3/8 circle round bodied	02
▲ 1/2 circle curved cutting	03
▲ 3/8 circle curved cutting	04
▼ 1/2 circle reverse cutting	05
▼ 3/8 circle reverse cutting	06
● straight round bodied	07
▲ straight curved cutting	08
⊗ 1/2 circle taper cutting	09
⊗ 3/8 circle taper cutting	10
⊙ blunt point	11
▼ 1/2 circle spatula curved	12
▼ 3/8 circle spatula curved	13
● 1/4 circle round bodied	14
● 1/2 circle round bodied heavy	15
without needle	16
double needle	-2

PGA 20 F 01 -2

PGA20F0126-2

Polyglycolic Acid 2/0 75mm 1/2 circle round bodied double needles 26mm

## Disposable Skin Stapler and Remover

### Application:

Used for wound closure and tissue suture

### Features and Advantages:

- Single use, avoid cross-infection
- Biologically compatible
- Significantly decrease wound closure time and reduce procedure & anaesthesia time
- Suture easily and efficiency as well as easily removed
- With better cosmetic results.



## Disposable Trocars

### Application:

It is used for laparoscopy surgery, the puncture of the abdominal wall of the human body is used to establish a working channel for abdominal surgery.

### Features and Advantages:

- Unique air-tight design to prevent gas leakage.
- Anti-slip grain design, increasing the friction between cannular and abdominal wall, to avoid cannular fall off.
- Universal positioning of puncture cone without directional insertion.



## Disposable Endo Cutter Stapler and The Cartridge

### Application:

Suitable for endoscopic or open surgical tissue removal in abdominal surgery, gynecology, pediatrics, thoracic surgery.

### Features and Advantages:

- One-handed control ensures complete tissue cutting and reduces tissue damage.
- Better tissue thickness adaptability.
- Larger rotation angle for easier operation.

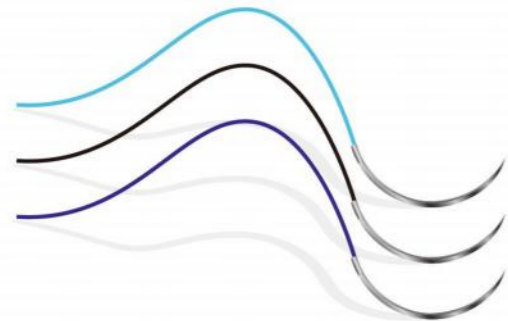


SPECIALTY SUTURES PORTFOLIO

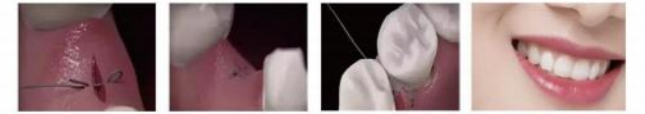
# Dental sutures



Optimal performance in DENTAL SURGERY



# Dental sutures



## Non Absorbable soft Nylon

USP Size	Needle shape	Colour	Structure
4/0, 5/0	3/8 circle reverse cutting	Blue, Black	Monofilament

## Non Absorbable Silk Braided

USP Size	Needle shape	Colour	Structure
3/0, 4/0	3/8 circle reverse cutting	Black, White	Braided multifilament

## Synthetic Absorbable Polyglactine 910

USP Size	Needle shape	Colour	Structure
4/0, 5/0	3/8 circle reverse cutting	Violet	Braided multifilament

## Synthetic Absorbable Polydioxanone

USP Size	Needle shape	Colour	Structure
4/0	3/8 circle reverse cutting	Violet	Monofilament

## Non Absorbable PTFE

USP Size	Needle shape	Colour	Structure
3/0, 4/0, 5/0	3/8 circle reverse cutting	White	Monofilament

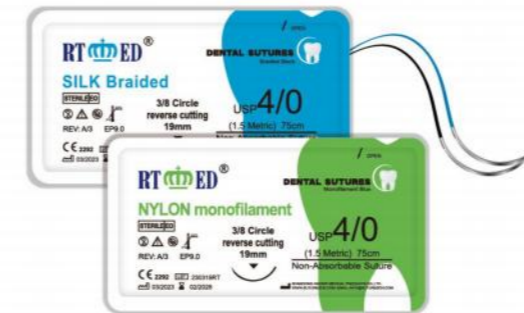


## DENTAL AND MAXILLOFACIAL SURGERY

Haidike surgical dental sutures allow dental and maxillofacial surgeons to obtain the best results for their patients. Our wide portfolio consists of absorbable and non-absorbable sutures.

Surgical procedures:

- Dental implants
- Dental prostheses
- Maxillary sinus lift
- Bone grafts
- Removal of pathological processes
- Apicoectomies
- Periodontal surgery
- Gingival aesthetics
- Gingival graft
- Third molar surgery
- Frenectomies
- Pediatric dentistry





# Ophthalmic sutures

NON-ABSORBABLE SUTURE  
(11-0, 10-0, 9-0, 8-0, 7-0)

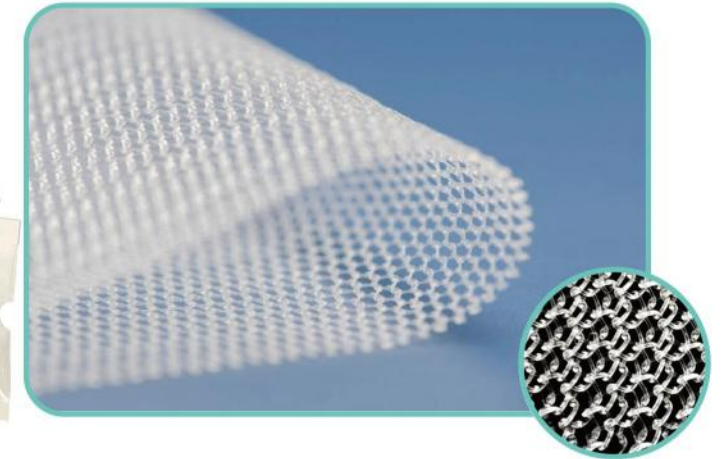


Suture needles designed to stay sharp

Excellent needle size to match the thread



# Hernia Repair Mesh



## Large mesh aperture

Promotes liquid circulation and smoothes tissue growth.

## Less micropores

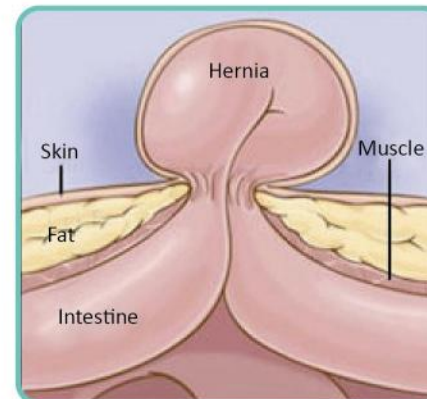
Greatly reduces the possibility of bacteria hiding and is not easy to infect.

## Light weight

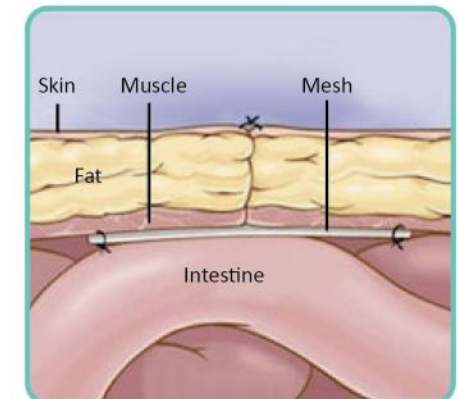
Reduce postoperative pain and foreign body sensation.

Products Description	Size
Polypropylene Mesh	6x11cm
Polypropylene Mesh	7.6x15cm
Polypropylene Mesh	10x15cm
Polypropylene Mesh	15x15cm
Polypropylene Mesh	30x30cm

## Hernia Example



## After Mesh Repair







## Cassette Sutures

Length	25m 50m 75m 100m
Absorbable	Chromic catgut, Plain catgut PGA, PGLA, PDO
Non-absorbable	Silk, Nylon, Polyester, Polypropylene



## Suture Materials

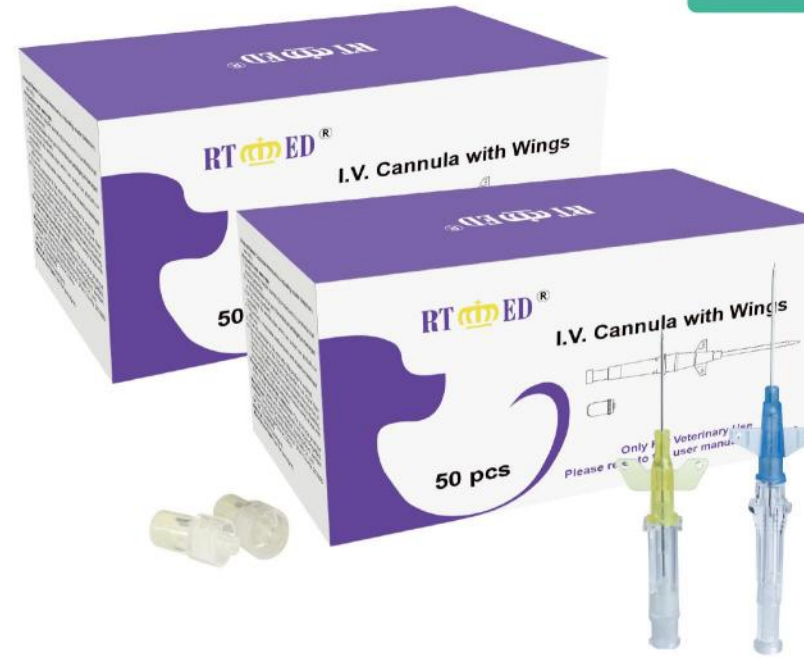
Threads	Sizes
Silk	USP4-6/0
Nylon	USP4-8/0
Polyester	USP5-6/0
Polypropylene	USP2-6/0



## Self-adhesive Elastic Bandage

Standard	Features
5.0cm×450cm	Self-adhesive
7.5cm×450cm	High elasticity
10cm×450cm	Waterproof
15cm×450cm	Easy to tear

## I.V. Cannula with Wings



specification	22G 24G 26G
---------------	-------------



Dosing mouth shape



Pen type



Butterfly type

## Veterinary catheter



# Lifting Threads Needle

**SHARP** Basic type, generally used for linear filling and simple lifting, Beginners can also operate effortlessly.

**W TYPE** Circular head, reducing the damage to the skin tissue. After the injection, the needle can be taken out then correct the position and depth of the needle, which improves the lack of a stitch of the other types.

**L TYPE** L type blunt needle, reduce the damage of blood vessels, bruising and hematoma. The pain was significantly reduced.

**U-COG** Double needle is used for eyebrow lifting and other parts requiring strong lifting. U-COG is a special structure line with strong lifting ability. The local lifting effect is almost as good as the little facelift.

# PDO/PCL Lifting Thread

**Mono**  
**Needle** Sharp Needle  
**Parts** Face, Body  
**Effects** Tightening, Filling, Wrinkles Removing, Whitening

**Tornado Screw**  
**Needle** Sharp Needle  
**Parts** Eye, Neck, Crow's Feet, Cheek  
**Effects** Tightening, Filling, Whitening, Wrinkles Removing

**Nasal COG**  
**Needle** L type Blunt Needle  
**Parts** Nasal columella, Nasal bridge  
**Effects** Rhinoplasty, Nose Shaping

**COG Lifting**  
**Needle** L/W type Blunt Needle  
**Parts** Lifting Eyebrow, Apple Zone, Cheek, Chest  
**Effects** Face Lifting, V Face, Chest Lifting

**Multi Threads**  
**Needle** L type Blunt Needle  
**Parts** Face, Neck, Eye Bag, Crow's Feet  
**Effects** Tightening, Filling, Whitening, Wrinkles Removing

**Molding COG**  
**Needle** W type Blunt Needle  
**Parts** Face, Neck, Crow's Feet, Eye Bag  
**Effects** Tightening, Filling, Whitening, Wrinkles Removing



- Forehead**  
Multi Threads / Tornado Screw / Mono Screw
- Crow's feet / Eye bags / Eye Corner's Lifting**  
Blunt Needle For Eye 30G-25mm
- Apple Zone**  
Multi Threads / Tornado Screw / Mono Screw
- Nasolabial folds / Mouth Corner's Lifting**  
Multi Threads / Tornado Screw / Mono Screw



- Face Lifting**  
18G-100mm / 19G-100mm
- Nose Dorsum / Nose Bridge**  
19G-60mm
- Nose Columella**  
19G-38mm
- Cervical Stripe / Neck Lifting**  
23G-38mm / 18G-100mm

# Orthopedic Casting Tape



## USE INSTRUCTION

- Apply 1~2 layers stockinet over the affected body part;
- Wear surgical gloves;
- Choose proper size orthopedic casting tape, then open the package;
- Immerse the casting tape in normal temperature(20°C~30°C) water for 5~6 seconds and squeeze 2~3 times. Then remove from the water and squeeze out the excess water. The curing time of orthopedic casting tape is directly related to the temperature of water. The curing time is shorter in high temperature water than in low temperature water. If the water temperature is over 27°C, the curing time is too short to increase the difficulty of the operation.
- Wrap the casting tape spirally around the affected body part, overlapping the previous layer by one-half or two-thirds the width of the tape. The tension is moderate. If it is too loose, it will weaken the adhesion of the orthopedic casting tape. If it is too tight, it will affect the blood circulation.
- The intensity of the casting tape is related to the number of overlapped layers. Overlap 3~4 layers for the non-weight bearing parts, while overlap 5~6 layers for the weight bearing parts. If more layers are needed, please ensure the adhesivity between the layers.
- To increase the adhesion between layers, the casting tape will be shaped after wrapped. The operating time should be in 3~5 minutes. The adhesion and shaping effect cannot reach the best if the operating time is longer or the immersed time is too long. The patients do not allow to move freely in 10 minutes before the orthopedic casting tape are completely hardened.
- The electric plaster saw is needed if the affected parts need to open a window or remove the orthopedic casting tape.

Orthopedic Casting Tape				
Product Description	Sizes	Specification(W×L)	Packaging	Operating Part
Fiberglass Orthopedic Casting Tape	RT002	5.0cm × 360cm	10bags/box 12boxes/ctn	Wrists/Childrens
Fiberglass Orthopedic Casting Tape	RT003	7.5cm × 360cm	10bags/box 12boxes/ctn	Arms
Fiberglass Orthopedic Casting Tape	RT004	10.0cm × 360cm	10bags/box 12boxes/ctn	Arms / Legs
Fiberglass Orthopedic Casting Tape	RT005	12.5cm × 360cm	10bags/box 9boxes/ctn	Legs
Fiberglass Orthopedic Casting Tape	RT006	15.0cm × 360cm	10bags/box 9boxes/ctn	Legs

# Polymer Splint



Wrist Fixation  
Recommended sizes:  
312 (7.5cmX30cm)  
415 (10cmX40cm)



Thumb Fixation  
Recommended sizes:  
312 (7.5cmX30cm)  
415 (10cmX40cm)



The Fourth and Fifth Finger Fixation  
Recommended sizes:  
312 (7.5cmX30cm)  
415 (10cmX40cm)



Elbow Fixation  
Recommended sizes:  
312 (7.5cmX30cm)  
415 (10cmX40cm)



Forearm Fixation  
Recommended sizes:  
335 (7.5cmX90cm)  
430 (10cmX75cm)



Horseshoe Fixation  
Recommended sizes:  
335 (7.5cmX90cm)  
430 (10cmX75cm)



Ankle Fixation  
Recommended sizes:  
430 (10cmX75cm)  
530 (12.5cmX75cm)



Legs Fixation  
Recommended sizes:  
335 (7.5cmX90cm)  
545 (12.5cmX115cm)

Polymer splint				
Product Description	Sizes	Specification(W×L)	Packaging	Operating part
Medical Polymer Splint	312	7.50cmX30cm	20bags/box 6boxes/ctn	wrists/Childrens
Medical Polymer Splint	335	7.50cmX90cm	10bags/box 6boxes/ctn	arms/legs
Medical Polymer Splint	415	10.0cmX40cm	15bags/box 6boxes/ctn	arms/legs
Medical Polymer Splint	430	10.0cmX75cm	10bags/box 6boxes/ctn	legs
Medical Polymer Splint	530	12.5cmX75cm	10bags/box 6boxes/ctn	legs
Medical Polymer Splint	545	12.5cmX115cm	5bags/box 6boxes/ctn	legs
Medical Polymer Splint	630	15.0cmX75cm	10bags/box 6boxes/ctn	legs
Medical Polymer Splint	645	15.0cmX115cm	5bags/box 6boxes/ctn	legs

# Powered Wheelchair



Front wheel size: 10 inches	Net weight: 47kg (actually prevail)
Rear wheel size: 16 inches	Maximum speed: 6km/h
Dimensions: 1180×630×1360mm	Theoretical travel: 15km
Safe load: 100kg	Motor (motor): DC24V250W*2pcs
Frame material: Carbon steel	Gradeability (gradient): 6 degrees
Battery: Standard	



Front wheel size: 8 inches	Net weight: 21.5kg (actually prevail)
Rear wheel size: 12 inches	Maximum speed: 6km/h
Dimensions: 990×590×950mm	Theoretical travel: 15km
Safe load: 100kg	Motor (motor): DC24V250W*2pcs
Frame material: Aluminum alloy	Gradeability (gradient): 6 degrees
Battery: 12AH/20AH lithium battery	Folding size: 765×590×350mm

# Manual Wheelchair



Front wheel size: 7 inches	Net weight: 18kg (actually prevail)
Rear wheel size: 24 inches	Armrest: blow molding/leather
Dimensions: 950×680×900mm	Seat width: 460mm
Safe load: 100kg	Seat height: 520mm
Frame material: Aluminum alloy	
Tire: solid tire	



Front wheel size: 6 inches	Net weight: 7.2kg (actually prevail)
Rear wheel size: 8 inches	Armrest: blow molding/leather
Dimensions: 1000×500×910mm	Seat width: 340mm
Safe load: 100kg	Seat height: 490mm
Frame material: Aluminum alloy	Backrest height: 410mm
Folding size: 220×500×700mm	

## Seniors Shopping Cart

A good helper for parents in life



Tie-rod brake design



Comfortable seat



Wear-resistant reinforced brake rear wheel



## New Generation Multi-claw Crutches

Material upgrade



Smooth all the way

- Anti-stumbling design Steady walk without hindrance
- The inside and outside width design is balanced and stable.



Feel comfortable

- High wear-resistant handrail
- Surface cracked anti-skid treatment, anti-skid and wear-resistant, Ergonomic design, Fits to the hand without getting tired from holding for a long time.



Firmer and stronger

- 1.2mm wall thickness Thicken reinforcement
- Lightweight and load-bearing



Firm and convenient

- Annular clavicle clamp
- Fixed main pole Three simple steps



## Medical Grade Crutches

Stable and non-slip height adjustable



PE environmentally friendly foam material arm rest

Thick PE foam material, high resilience, non-slip, soft and comfortable, strong abrasion resistance, not tired after long-term use.



Grip three-position adjustment

The grip has three gears adjustment, the adjustment part is locked firmly and stably, and it is convenient to use and feel comfortable and soft



Leg height adjustment in 9 positions

The height of 9 levels is adjustable to meet the needs of people of different heights. Strengthen the aluminum alloy to provide super good support.



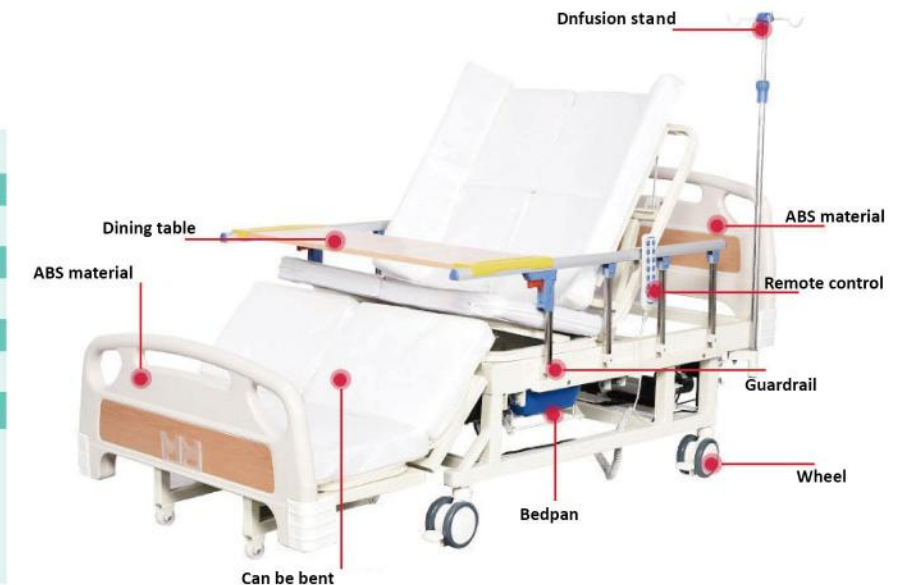
Non-slip durable rubber pad

The rubber pad is made of rubber, which is thicker, stable and non-slip, and the built-in metal gasket is wear-resistant and durable

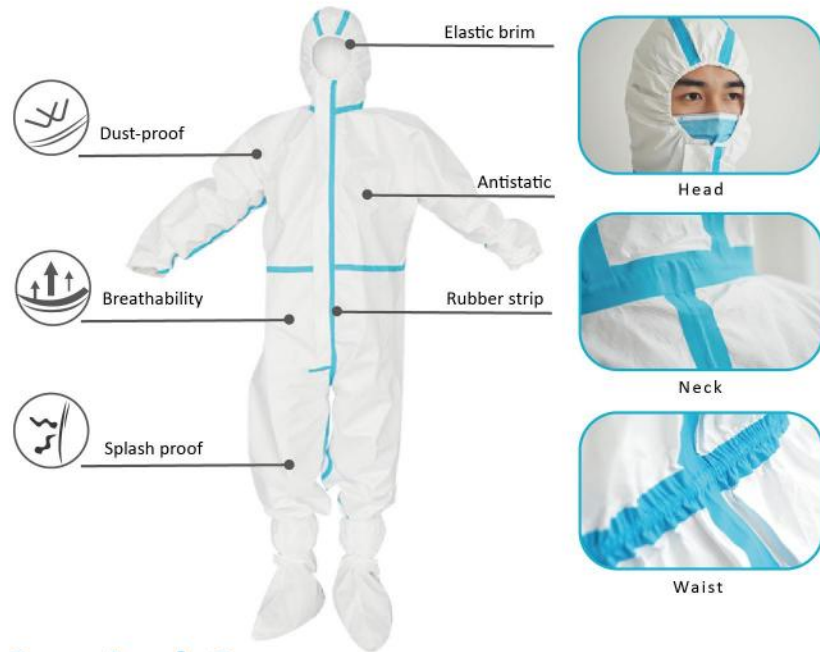


## Nursing Bed

Bent leg angle: -45~25°
Back angle: 0~80°
Rollover angle: 0~55°
Toilet hole size: 280×215mm
Product Size: 2100×900×550mm
Bed size: 1970×900mm
Bed material: Thickened steel pipe
For people: Elderly, paralyzed patients, etc
Product accessories: Wash basin, infusion stand, mattress, dining table, guardrail, castor, bedpan



# Medical Disposable Protective Clothing



**Executive Standard**  
GB 19082-2009



**Specifications:** One-piece Sizes:  
□ 160 □ 165 □ 170 □ 175 □ 180 □ 185

**Intended use:** It is used to provide barrier and protection for the potentially infectious patients' blood, body fluids, secretions, etc. that clinical medical personnel come into contact with at work. It cannot be used to isolate places with strict microbiological index control requirements such as intensive care unit (room).

**Expiration date:**  
2 years after production

## Surgical Gowns



**CE** BS EN 13795-1:2019



**Model:** □S □M □L □XL □XXL □XXXL □XXXXL

**Specifications:**  
□High performance type □Standard type

**Intended use:** For the surgical staff to wear, reduce the source of infection to the patient's surgical wound to prevent postoperative wound infection.

**Storage:**  
Store in an environment with relative humidity not exceeding 80%, no corrosive gas, cool, dry, well ventilated and clean.

**Expiration date:**  
3 years after production

# Isolation Gown



**Isolation Gown**  
TYPE A/TYPE B



**Isolation gowns - type A/type B**  
**Specifications:**  
120cm×120cm/One-size-fits-all

**Material:**100% Non-woven fabric

**Product description:**  
Non-woven fabrics are usually used as the main raw materials, which are made by cutting and sewing. Non-sterile, single-use

**Expiration date:**  
3 years after production

- Good air permeability
- Strong barrier performance
- Non-sterile
- Do not reuse

## Medical Scrubs Uniforms



**Model:**type A: split type;  
type B: gown type.



**Specifications:**  
□S □M □L □XL □XXL

**Product Description:** Usually made of cotton fiber or non-woven fabric. The medical scrubs uniforms is short-sleeve or long-sleeve style that have the function of blocking dandruff, and do not have liquid barrier properties. It is non-sterile supply and can be reused. It should be sterilized before using.

**Expiration date:**  
3 years after production

# Medical Goggle



- Model specifications** White Black Transparent  
Large Medium Small
- Product description** It is composed of a protective cover made of polymer material, a foam strip and a fixing device. Non-sterile, single use.
- Expiration date** 3 years after production
- Storage** This product should be stored in a dry, ventilated, non-corrosive gas warehouse.

# Medical Isolation Shoe Cover



- size:** Long Short
- style:** Non-woven fabric PVC PP+PE

# Medical Cap



- Model specifications** Round cap.  $\phi$ 25.5cm FZ/T64005-2011
- Product description** Non-woven fabric is usually used as the main raw material, which is made by cutting and sewing. Non-sterile, single-use.
- Material** Non-woven fabric PP+PE
- Colour** Blue
- Storage** This product should be stored in a dry, ventilated, non-corrosive gas warehouse.

# Medical Isolation Mask



- Model:** Ear hook type / Headband type
- Product description** It is composed of a protective cover made of polymer material, a foam strip and a fixing device. Non-sterile, single use.
- Expiration date** 3 years after production
- Storage** This product should be stored in a dry, ventilated, non-corrosive gas warehouse.

# Medical Bed Sheet



- Materials:** 70% Polypropylene, 30% Polyethylene non-woven fabric
- Product description** It is made by compounding or sewing non-woven fabric and plastic film. Non-sterile, single use.
- Expiration date** 3 years after production
- Storage** This product should be stored in a dry, ventilated, non-corrosive gas warehouse.

# Disposable Virus Specimen Collection Tube



- Model:** Inactivated and non-inactivated
- Product description** Disposable virus specimen collection tube is composed of swabs and/or collection cups and tubes containing storage solution. Non-sterile.
- Expiration date** 12 months
- Storage** The product should be stored in a non-corrosive gas and well-ventilated warehouse at room temperature.

# Medical examination gloves



- Model/Specification:** According to the different materials used, it is divided into: polyvinyl chloride, butyronitrile; according to the size, it is divided into: XS, S, M, L, XL.
- Product Description:** Usually made of materials such as polyvinyl chloride. Have sufficient strength and barrier properties. Non-sterile supply, single use.
- Intended use:** It will be wore by doctor to do checking for the patients or lab testing.

# Medical rubber gloves



- Model/Specification:** XS, S, M, L, XL.
- Product Description:** Usually made of materials such as polyvinyl chloride and rubber. Have sufficient strength and barrier properties. Non-sterile supply, single use.
- Intended use:** It will be wore by doctor to do checking for the patients or lab testing.

# Disposable Surgical Face Mask



3 Ply Flat type Ear Loop EN 14683:2019 Type IIR	
Size	17.5 cm x 9.5 cm
Material	Polypropylene spunbond nonwoven fabric, polypropylene melt-blown nonwoven, metal wire with plastic covering nose clip, polyester/nylon spandex blend ear loops
Product performance:	The bacterial filtration efficiency of the mask should be not less than 98%.
Application	It is worn by clinical staff during non-invasive procedures, covering the user's mouth, nose, and jaw, providing a certain physical barrier to prevent direct penetration of pathogenic microorganisms, particulate matter, in patients, etc.
Expiration date	2 years after production
Storage	Store at room temperature, the relative humidity should not exceed 80%, non-corrosive gas and well-ventilated room. Transportation means should be clean and isolated from fire sources.



3 Ply Flat type Ear Loop EN 14683:2019 Type IIR	
Size	14.5 cm x 9.5 cm
Material	Polypropylene spunbond nonwoven fabric, polypropylene melt-blown nonwoven, metal wire with plastic covering nose clip, polyester/nylon spandex blend ear loops
Product performance:	The bacterial filtration efficiency of the mask should be not less than 98%.
Application	It is worn by clinical staff during non-invasive procedures, covering the user's mouth, nose, and jaw, providing a certain physical barrier to prevent direct penetration of pathogenic microorganisms, particulate matter, in patients, etc.
Expiration date	2 years after production
Storage	Store at room temperature, the relative humidity should not exceed 80%, non-corrosive gas and well-ventilated room. Transportation means should be clean and isolated from fire sources.

# Disposable Medical Face Mask



3 Ply Flat type Ear Loop EN 14683:2019 Type I	
Size	17.5 cm x 9.5 cm
Material	Polypropylene spunbond nonwoven fabric, polypropylene melt-blown nonwoven, metal wire with plastic covering nose clip, polyester/nylon spandex blend ear loops
Product performance:	The bacterial filtration efficiency of the mask should be not less than 95%.
Application	It is worn by clinical staff during non-invasive procedures, covering the user's mouth, nose, and jaw, providing a certain physical barrier to prevent direct penetration of pathogenic microorganisms, particulate matter, in patients, etc.
Expiration date	2 years after production
Storage	Store at room temperature, the relative humidity should not exceed 80%, non-corrosive gas and well-ventilated room. Transportation means should be clean and isolated from fire sources.



3 Ply Flat type Ear Loop EN 14683:2019 Type IIR	
Size	17.5 cm x 9.5 cm
Material	Polypropylene spunbond nonwoven fabric, polypropylene melt-blown nonwoven, metal wire with plastic covering nose clip, polyester/nylon spandex blend ear loops
Product performance:	The bacterial filtration efficiency of the mask should be not less than 98%.
Application	It is worn by clinical staff during non-invasive procedures, covering the user's mouth, nose, and jaw, providing a certain physical barrier to prevent direct penetration of pathogenic microorganisms, particulate matter, in patients, etc.
Expiration date	2 years after production
Storage	Store at room temperature, the relative humidity should not exceed 80%, non-corrosive gas and well-ventilated room. Transportation means should be clean and isolated from fire sources.



3 Ply Flat type Ear Loop EN 14683:2019 Type I	
Size	14.5 cm x 9.5 cm
Material	Polypropylene spunbond nonwoven fabric, polypropylene melt-blown nonwoven, metal wire with plastic covering nose clip, polyester/nylon spandex blend ear loops
Product performance:	The bacterial filtration efficiency of the mask should be not less than 95%.
Application	It is worn by clinical staff during non-invasive procedures, covering the user's mouth, nose, and jaw, providing a certain physical barrier to prevent direct penetration of pathogenic microorganisms, particulate matter, in patients, etc.
Expiration date	2 years after production
Storage	Store at room temperature, the relative humidity should not exceed 80%, non-corrosive gas and well-ventilated room. Transportation means should be clean and isolated from fire sources.



5 Ply Folding type EN 14683:2019 Type IIR	
Size	11.5 cm x 15 cm
Material	Polypropylene spunbond nonwoven fabric, polypropylene melt-blown nonwoven, nose clip, polyester/nylon spandex blend ear loops
Product performance:	The bacterial filtration efficiency of the mask should be not less than 98%.
Application	It is worn by clinical staff during non-invasive procedures, covering the user's mouth, nose, and jaw, providing a certain physical barrier to prevent direct penetration of pathogenic microorganisms, particulate matter, in patients, etc.
Expiration date	2 years after production
Storage	Store at room temperature, the relative humidity should not exceed 80%, non-corrosive gas and well-ventilated room. Transportation means should be clean and isolated from fire sources.



3 Ply Cup type Head Loop EN 14683:2019 Type IIR	
Size	13.5 cm x 13.5 cm
Material	Polypropylene spunbond nonwoven fabric, polypropylene melt-blown nonwoven, nose clip, polyester/nylon spandex blend head loops
Product performance:	The bacterial filtration efficiency of the mask should be not less than 98%.
Application	It is worn by clinical staff during non-invasive procedures, covering the user's mouth, nose, and jaw, providing a certain physical barrier to prevent direct penetration of pathogenic microorganisms, particulate matter, in patients, etc.
Expiration date	2 years after production
Storage	Store at room temperature, the relative humidity should not exceed 80%, non-corrosive gas and well-ventilated room. Transportation means should be clean and isolated from fire sources.



5 Ply Folding type Head Loop N95-V1	
Size	11.5 cm x 15 cm
Material	Polypropylene spunbond nonwoven fabric, polypropylene melt-blown nonwoven, nose clip, polyester/nylon spandex blend head loops
Product performance:	The bacterial filtration efficiency of the mask should be not less than 95%.
Application	It is worn by clinical staff during non-invasive procedures, covering the user's mouth, nose, and jaw, providing a certain physical barrier to prevent direct penetration of pathogenic microorganisms, particulate matter, in patients, etc.
Expiration date	15 months after production
Storage	Store at room temperature, the relative humidity should not exceed 80%, non-corrosive gas and well-ventilated room. Transportation means should be clean and isolated from fire sources.





Tissue Scissors



Stitch Scissors



Umbilical Scissors



Hemostatic Forceps



Tissue Forceps



Needle Forceps



Edison Forceps



Dissecting Forceps



Dressing Forceps



Surgical Blade



Scalpel 3#



Scalpel 4#



Scalpel 7#



Bone Hook



Skin Retractor



Surgery Suction Pipe



Infusion set



Blood transfusion set



Disposable blood bag



Syringes

