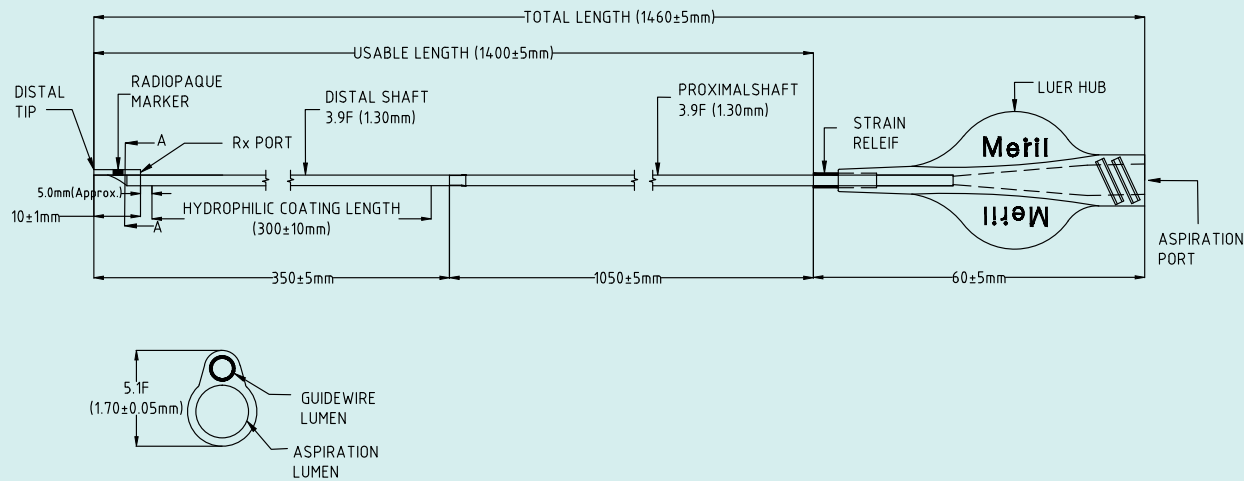


ASPIRON™ TECHNICAL SPECIFICATIONS

Distal Tip Profile	: 1.7 F / 0.022"
Lumen for Thrombus Aspiration	: 2.85 F / 0.037"
Rapid Exchange Port Length	: 10 mm
Outer Shaft Diameter - Distal & Proximal	: 3.9 F / 1.30 mm
Usable Catheter Length	: 140 cm
Guide Catheter Minimum ID Compatibility	: 6 F (Min. I.D. 0.070"/ 1.78 mm)
Guidewire Compatibility	: 0.014" (0.36 mm)
Maximum Outer Diameter	: 5.1F / 1.70 mm



ASPIRON ORDERING INFORMATION

ASP6F

Aspiron™ is not approved by USFDA and is not available for sale in USA.
Aspiron™ is a registered trademark of Meril Life Sciences Pvt. Ltd.

Meril

Meril Life Sciences Pvt. Ltd.
Muktanand Marg, Chala,
Vapi 396 191. Gujarat. India.
T +91 260 305 2100
F +91 260 305 2125

Meril, Inc.
116, Village Boulevard, Suite 200,
Princeton, NJ 08540, USA.
T +1 609 951 2287
F +1 609 951 1702

Meril South America.
Doc Med LTDA.
Al. dos Tupiniquins,
1079 – Cep: 04077-003 – Moema.
Sao Paulo. Brazil.
T +55 11 3624 5935
F +55 11 3624 5936

Meril GmbH.
Bornheimer Strasse 135-137,
D-53119 Bonn. Germany.
T +49 228 7100 4000
F +49 228 7100 4001

**Meril Tibbi Cihazlar
Imalat Ve Ticaret A. S.**
6, Mimar sinan Mah.,
Çavusbasi Cad. Özde Sok.
Aydin Eksi Is Merkezi Kat:1
Cekmekoy/Istanbul, Turkey.
T +90 53 2272 5172

E askinfo@merillife.com
W www.merillife.com

ASP/BROCHURE/001/20150319/IND

Aspiron™
Aspiration Catheter

Meril

Aspiron™
Aspiration Catheter

Aspiron™ Use Pictorial Guideline

Aspiron™
Aspiration Catheter

Aspirate for reflow.

Aspiron™ is specifically designed to aspirate thrombus rapidly to restore reflow

- Distal hydrophilic coating ensures smooth passage through guide catheter to the vessel with optimal trackability
- Deliverability enhanced by innovative tip design & short and easy to use rapid exchange lumen port
- Short and soft tip design facilitates increased safety during aspiration procedure
- Distal radiopaque marker enables precise positioning
- Proximal transparent hub – Ergonomic handling with kink resistance support

Rapid Thrombus Management

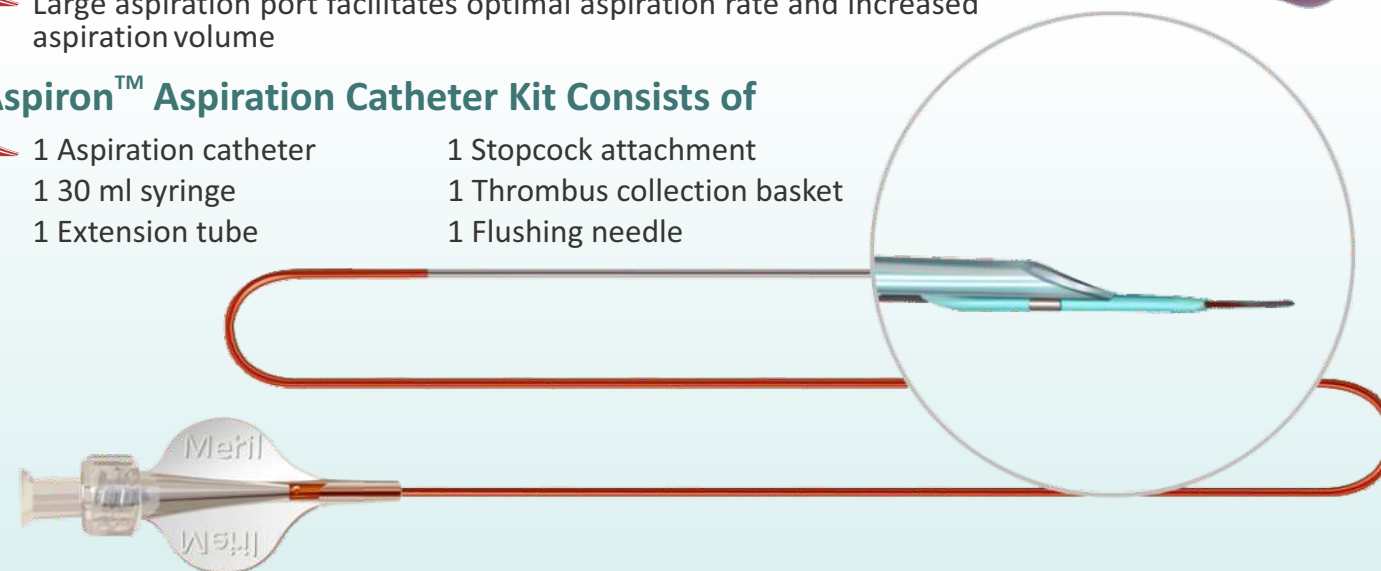
- Short rapid exchange guide wire lumen allows rapid catheter exchange, clot engagement and aspiration of thrombus

Aspiration Volume

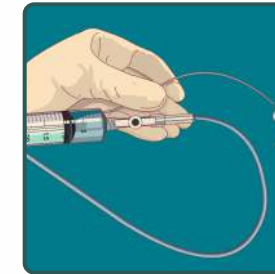
- Large aspiration port facilitates optimal aspiration rate and increased aspiration volume

Aspiron™ Aspiration Catheter Kit Consists of

- 1 Aspiration catheter
- 1 Stopcock attachment
- 1 30 ml syringe
- 1 Thrombus collection basket
- 1 Extension tube
- 1 Flushing needle

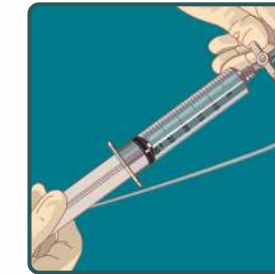


Step 1



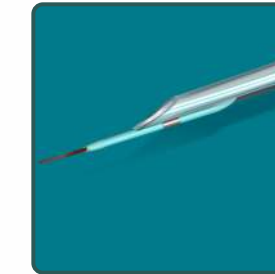
With the help of syringe flush the entire system - Aspiron™ catheter, extension tube, guide wire lumen with 5 to 10 cc Heparinised saline.

Step 2



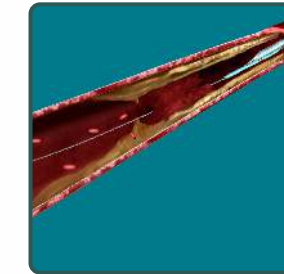
Close the stopcock. Retract the syringe plunger and rotate it until it locks fully extended.

Step 3



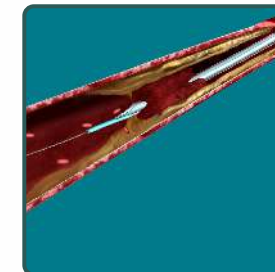
Load 0.014" guide wire through guide wire lumen.

Step 4



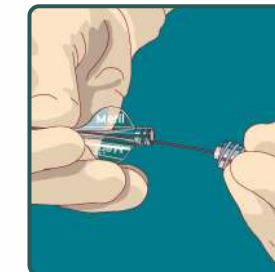
Advance the Aspiron™ catheter to the target site by sliding it parallel to the guide wire & guide catheter to avoid kinking.

Step 5



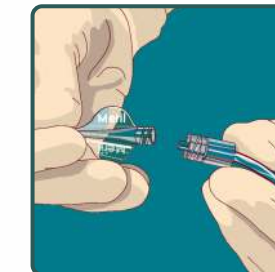
Position the catheter at distal section of the thrombus.

Step 6



Disconnect the extension tube from the stylet connector and remove the stylet from the catheter.

Step 7



Reconnect the extension tube to the Aspiron™ catheter hub.

Step 8



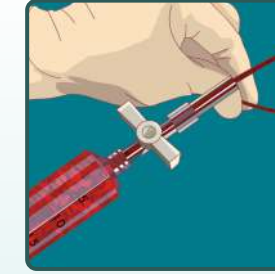
Open the stopcock valve to begin aspiration manually.

Step 9



Manually aspire thrombus.

Step 10



After completing the extraction process, close the stopcock and remove the catheter slowly.

Step 11



Pass all the extracted material through filter basket to check the content.

If you are required to repeat the procedure, it is necessary to re-introduce the wire stylet and commence from the beginning of the procedure guideline.