

**OLYMPUS**<sup>®</sup>

Your Vision, Our Future

**EVIS EXERA III**

EVIS EXERA III BRONCHOSCOPE

# BF-Q190

Fully rotatable, diagnostic bronchoscope in a slim design  
with clear, crisp high resolution image quality.





# EVIS EXERA III BRONCHOSCOPE OLYMPUS BF-Q190

The slim, versatile design of the BF-Q190 bronchoscope, powered by EVIS EXERA III, advances diagnostic bronchoscopy with outstanding handling, improved functionality, and unmatched image quality.

## Advancing Maneuverability

With outstanding handling and unmatched tracheobronchial access

**Rotary Function:** Insertion tube rotation of up to 120° left and right effectively reduces hand torque by 82%\* and supports easier insertion and positioning of endoscopic devices.

**210° Tip Angulation:** The wide angulation range can be maintained even when an endoscopic device is inserted, making it easier to access difficult-to-reach areas.



**Waterproof One-touch Connector:** A simple one-touch connector minimizes the effort required for set up, and its fully submersible design eliminates the need for a water-resistant cap.

\*When compared to standard Olympus bronchoscopes (data on file).

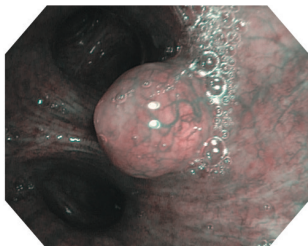
## Advancing Visualization

With clearer, brighter imaging

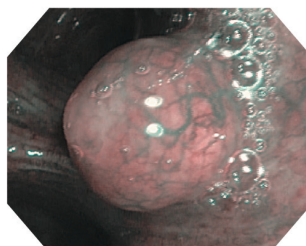
**High Resolution Image:** Excellent image quality comparable to our previous flagship model but with a thinner insertion tube and distal tip design.

**Electronic Magnification:** Close-up observation of bronchial surfaces is readily available with 1.2 x and 1.5 x electronic magnification.

**Narrow Band Imaging (NBI):** Now significantly brighter compared to previous generation scopes, NBI provides twice the viewable distance for enhanced visualization of vascular structures and mucosal morphology.



1.0 x magnification



1.5 x magnification

## Advancing Versatility

With compatibility across multiple specialties

**EVIS EXERA III:** The power of EVIS EXERA III expands across the hospital to enable equipment standardization and simplified support and service, with the ultimate goal of lowering the total cost of equipment ownership.

**Endoscopic Devices:** A full array of Olympus bronchoscopy devices are available and designed to deliver superior performance while minimizing channel damage, thereby potentially reducing repair costs and extending endoscope life.

## Specifications

Optical System	Field of view	120°	
	Direction of view	Forward viewing	
	Depth of field	3-100 mm	
	Image quality	Q-image	
Insertion Tube	Distal end outer diameter	4.8 mm	
	Distal end enlarged		
	Insertion tube outer diameter	4.9 mm	
	Working length	600 mm	
	Rotary Function	Yes	
	Instrument Channel	Channel inner diameter	2.0 mm
		Minimum visible length	3.0 mm from the distal end
	Bending Section	Direction from which endoscopic devices enter and exit the endoscopic image	
		Angulation range	Up 210° Down 130°
Electrocautery Instrument Compatibility	Yes		
Laser Compatibility	Nd: YAG, 810 nm diode		
Compatible EVIS EXERA System	Video system center	Olympus CV-190	
	Xenon light source	Olympus CLV-190	

Olympus is a registered trademark of Olympus Corporation, Olympus America Inc., and/or their affiliates.