

**Anexa 20 Saltea antiescare grad I cu celule tip fagure, Model 28566, Gima****Nr. de inregistrare AMDM: DM000148048**

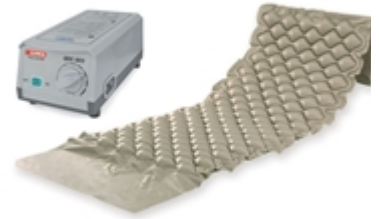
Specificarea tehnică deplină solicitată, Standarde de referință	Specificarea tehnică deplină oferita, Standarde de referință
<p>Saltea antiescare gradul I, cu celule tip fagure Descriere: Salteaua antiescare previne aparitia escarelor, daca pacientul are deja escare salteaua antiescare va ajuta la vindecarea acestuia impreuna cu tratamentul medicamentos si dieta de viata prescrisa de medic Parametrul, Specificația</p> <p><b>Saltea</b></p> <ul style="list-style-type: none"><li>• Dimensiuni aproximative:195x90 (±5cm), înălțime minim 7cm</li><li>• Celule tip fagure (formă de bule) minim 130</li><li>• Material impermeabil, rezistent la curățare și dezinfectie da</li><li>• Celule tip fagure conectate în două grupe A și B, da</li><li>• Greutatea maximă suportată minim 110 Kg</li></ul> <p><b>Caracteristici compresor:</b></p> <ul style="list-style-type: none"><li>• Compresor cu presiune alternanta, da</li><li>• Ciclul de umflare / dezumflare 10-15 minute</li><li>• Cârlige pentru fixare de marginea patului da</li><li>• Nivel de zgomot redus da</li><li>• Debitul de aer 4-9 litri/min</li><li>• Presiunea reglabila la ieșire minim 50-100 mmHg</li><li>• Alimentare rețea electrică 220 V, 50 Hz da</li></ul> <p>Termenul de garanție minim 2 ani echivalent la 24 luni Dovada înregistrării dispozitivului ofertat în Registrul de Stat al Dispozitivelor Medicale - Vor fi atribuite doar Dispozitivelor Medicale înregistrate în Registrul de Stat al Dispozitivelor Medicale</p>	<p>Saltea antiescare gradul I, cu celule tip fagure Descriere: Salteaua antiescare previne aparitia escarelor, daca pacientul are deja escare salteaua antiescare va ajuta la vindecarea acestuia impreuna cu tratamentul medicamentos si dieta de viata prescrisa de medic Parametrul, Specificația</p> <p><b>Saltea:</b></p> <ul style="list-style-type: none"><li>• Dimensiune: 200 x 90 x înălțime minim 7cm, broșura</li><li>• Celule tip fagure (formă de bule), 130, broșura</li><li>• Material: PVC, impermeabil, rezistent la curățare și dezinfectie, da, broșura</li><li>• Celule tip fagure conectate în două grupe A și B, da pag 127 manual</li><li>• greutatea maxima suportată: 135 kg, broșura</li></ul> <p><b>Caracteristici compresor:</b></p> <ul style="list-style-type: none"><li>• Compresor cu presiune alternanta, da, pag 127 manual</li><li>• Ciclul de umflare / dezumflare: 6 minute, broșura</li><li>• Cârlige pentru fixare de marginea patului, da broșura</li><li>• Nivel de zgomot redus :da, broșura</li><li>• Debitul de aer: minim 6l-7l/min, broșura</li><li>• presiunea reglabila la ieșire: 40-100 mmHg, broșura</li><li>• Alimentare rețea electrică: 110-220 V, 50/60 Hz</li></ul> <p>Termenul de garanție: minim 2 ani echivalent la 24 luni Dovada înregistrării dispozitivului ofertat în Registrul de Stat al Dispozitivelor Medicale – Nr. de inregistrare AMDM: DM000148048</p>



# GIMA

## BUBBLE AIR MATTRESS + COMPRESSOR (28564+28565)

**Code:** 28566  
**Category:** Intensive care anti-decubitus mattresses  
**Unit of sale:** 1 kit  
**Minimum order:** 1  
**Type:** Medical device  
**Class:** I  
**NSIS:** 2398249  
**CND:** V080701  
**EAN13:** 8023279285666



**Description:**

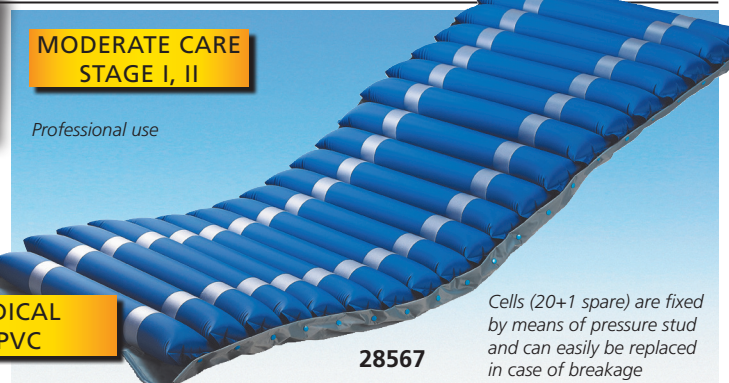
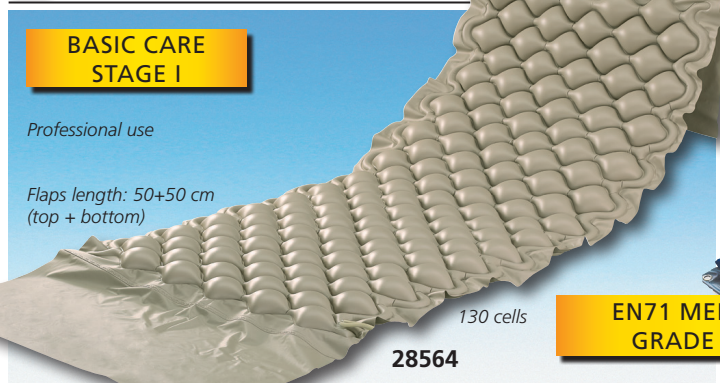
- **BUBBLE MATTRESS**  
Designed for the treatment and prevention of pressure sore stage I in short-term and domiciliary therapies. The PVC mattress is composed of 130 7 cm-high bubble cells, particularly comfortable. Fixable to bed by extra flaps on both top and bottom side. Cold-resistant -30 degrees.  
Flaps length: 50+50 cm (top + bottom).
- **PUMP SYSTEM**  
Special silent pump for an excellent pressure regulation by a knob on the front panel. It can be hung to any kind of hospital bed frame by means of two adjustable hooks. For use with bubble or alternating cell mattresses.

**Technical Specifications:**

**Bubble mattress:**  
Total size: 200 x 90 x 7 cm  
Cell height: 7 cm (2.7")  
Material: PVC  
Thickness: 0.32 mm  
Suitable for persons up to: 135 kg

**Pump system:**  
Size: 25x12xh 10 cm  
Operating voltage: 110-220 V, 50-60 Hz  
Working pressure: 40-100 mmHg  
Air output: 6-7 liter/min  
Cycle time: 6 min  
Case: TUV-CE IEC/EN60601-1; 60601-1-2

# ANTI-DECUBITUS AIR MATTRESSES WITH PUMP - STAGE I AND II



**BASIC CARE STAGE I**  
Professional use  
Flaps length: 50x50 cm (top + bottom)  
130 cells  
**EN71 MEDICAL GRADE PVC**  
**28564**

**ALTERNATING BUBBLE MATTRESS**  
Designed for the treatment and prevention of pressure sore stage I in short-term and domiciliary therapies. The PVC mattress is composed of 130 7 cm-high bubble cells, particularly comfortable. Fixable to bed by extra flaps on both top and bottom side. Cold-resistant -30 degrees.

**PUMP SYSTEM**  
Special silent pump for an excellent pressure regulation by a knob on the front panel. It can be hung to any kind of hospital bed frame by means of two adjustable hooks. For use with bubble or alternating cell mattresses. **28565**

**MODERATE CARE STAGE I, II**  
Professional use  
Cells (20+1 spare) are fixed by means of pressure stud and can easily be replaced in case of breakage  
**28567**

**ALTERNATING INTERCHANGEABLE CELL-MATTRESS**  
Recommended for the prevention and treatment of pressure sore stage I and II in medium-term and domiciliary therapies. The 20.9.5 cm-high Nylon+PVC cells provide superior comfort.

GIMA code	MATTRESSES AND PUMP
28564	Bubble mattress
28565	Pump for 28564
28566	Kit bubble mattress+pump (28564+28565)
28567	Interchangeable cell mattress
28568	Pump for 28567
28569	Kit cell mattress+pump (28567+28568)
28570	Spare cell for 28567

Manual and box in 10 languages: GB, FR, IT, ES, DE, PT, PL, HU, GR, Arabic

**TECHNICAL SPECIFICATIONS - PUMP**

	28565	28568
Size:	25x12x10 cm	
Operating voltage:	110-220 V, 50-60 Hz	
Working pressure:	40-100 mmHg	40-110 mmHg
Air output:	6-7 liter/min	6-7 liter/min
Cycle time:	6 min	12 min
Case:	TUV-CE IEC/EN60601-1; 60601-1-2	

**TECHNICAL SPECIFICATIONS - MATTRESS**

	28564	28567
Total size:	200x90x7 cm	200x86x9.5 cm
Cell height:	7 cm (2.7")	9.5 cm (4")
Material:	PVC	Nylon+PVC
Thickness:	0.32 mm	0.32 mm
Load:	135 kg	140 kg

# THERAPEUTIC ANTI-DECUBITUS MATTRESSES - STAGE III AND IV



**MODERATE TO INTENSIVE CARE STAGE I, II, III**  
Ventilated low-air-loss cells wicks moisture away  
Professional use  
Nylon PU cover with button biocompatibility, vapor permeable & water resistant with CA117. Flame Retardant Level.  
**28575**

• **28575 KIT 5010E ALTERNATING PRESSURE MATTRESS + PUMP**  
Valuable overlay system designed for prevention and treatment of patients at moderate to intensive risk of pressure ulcers. Pressure is periodically redistributed by inflating and deflating cells in order to mimic natural sleep movement patterns and avoid long term pressurization of tissue. Manual in: GB, FR, IT, ES, PT, DE, PL, RO, SE, GR.

• **28576 CELL for 28575 - spare**

**ALTERNATING FUNCTION**  
The pump inflates and deflates the cells with cyclicity (Group A and Group B as shown in the picture), to change the contact position between the patient and the bed, to promote the blood circulation, to prevent and recover the bedsore, reducing the patient's pain and the nursing labor. Pillow function (28580-2 only): the cells of the head position (Group C) don't alternate, for more comfort to the patient.

**INTENSIVE CARE STAGE I, II, III, IV**  
Cotton lining with zipper  
Professional use  
CPR straps quickly deflate the mattress for emergencies  
Low pressure alarm  
Air pressure dial adjustment  
**28580-2**

• **28580 KIT 8010 ALTERNATING PRESSURE MATTRESS + PUMP**  
• **28582 KIT 8080 ALTERNATING PRESSURE MATTRESS + PUMP**  
Advanced systems of alternating pressure mattresses. The multi-mode pump offers:  
- **alternating mode:** the pressure is periodically redistributed by inflating and deflating cells in order to mimic natural sleep movement patterns and avoid long term pressurization of tissue.  
- **constant static mode:** the pressure is about 2/3 lowered when compared to the same pressure level from alternating mode by means of immersion and envelopment. Visual alarms notify the caregiver of unusual situation, reducing the risk of human error. Suitable for the prevention and treatment of all stages of pressure ulcers. Manual in: GB, FR, IT, ES, PT, DE, PL, RO, SE, GR.

• **28581 CELL for 28580 - spare** • **28583 CELL for 28582 - spare**

**TECHNICAL SPECIFICATIONS - PUMPS (28575, 28580, 28582)**

Size:	30x13.5x11 cm	Cycle time:	12 min
Operating voltage:	220-240 V, 50 Hz	Working pressure:	55-120 mmHg
Case material:	Flame retardant ABS	Air output:	7-8 liter/min
	TUV-CE IEC/EN60601-1; 60601-1-2		

**PUMP 28580, 28582 only**  
Quick connector with transfer cap to transform mattress into a sealed static surface to facilitate patient transportation.

Quick connector

**TECHNICAL SPECIFICATIONS - MATTRESS**

	28575	28580	28582
Total size:	198x86x12.8 cm	200x86x21 cm	
Alternating	1 in 2 (group A and B)		
Cell height:	12.8 cm (5")	20 cm (8")	
Cover material:	Nylon PU with button	Nylon+PU with cotton lining	
Thickness:	0.4 mm	0.4 mm	0.25 mm
Number of cells:	17+1 spare	20+1 spare	
Cells material:	nylon PVC	nylon PVC	nylon TPU
Load:	150 kg	160 kg	200 kg