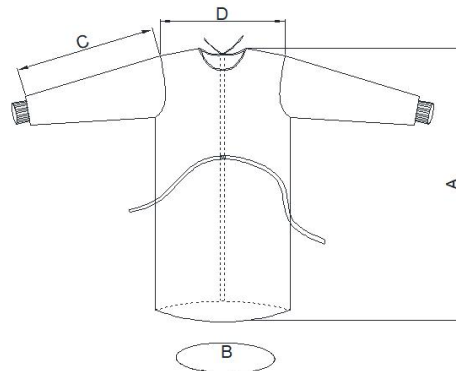
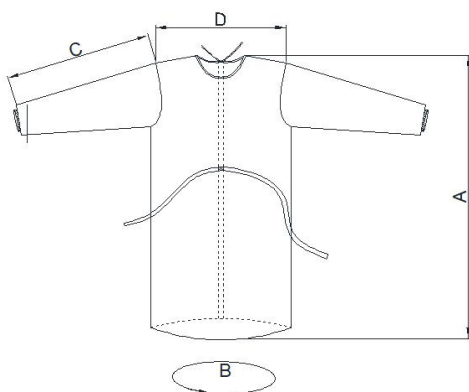


CATALOGUE

- **Product Name:** Isolation Gown
- **Classification:** Class I, according to Annex VIII of Regulation (EU) 2017/745
- **Description:** Isolation gown is made of high quality PP, with a tie at neck. White knitted cuffs or elastic cuffs are used.
- **Intended use:** Used to isolate the dust and bacteria, prevent the scurf and hair falling.
- **Material:** PP
- **Approvals:** CE, ISO 13485
- **Manufacturer:** Leboo Healthcare Products Limited
- **Country of origin:** China
- **Specification:** Detail see specification as below.



Material	Weight(gsm)	Size(cm)	Measurement Location （cm）				Color	Detail
			A	B	C	D		
PP	35	S: 110*127	110	127	58	58	Blue; Yellow; White; Green	elastic
		M: 110*140	110	140	58	60		
		L: 115*140	115	140	58	62		
		XL: 120*140	120	140	60	65		
		XXL: 140*140	140	140	60	67		
		3XL: 140*150	140	150	60	70		
Tolerance			±2	±2	±1	±1		

Design:

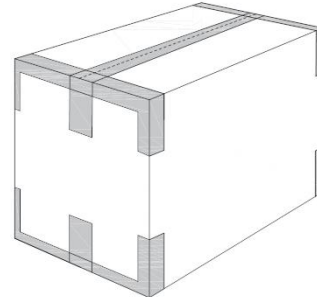
Check:

Approve:

Date:

● Packaging:

- (1) Carton Requirements: Five layers corrugated
- (2) Packing Quantity: 10pcs/polybag, 100pcs/ctn
5 Layers Carton(Paper)



● Storage:

- (1) Store in dry, clean conditions in original packaging.
- (2) Store away from direct sunlight, source of high temperature and solvent vapors.
- (3) Store with the temperature range -5°C to $+45^{\circ}\text{C}$ and with relative humidity below 65%.

● Shelf Life:

Shelf life is 60 months from the date of manufacture when stored as stated above.

● Cautions and disposal:

- (1) Do not contact with heavy oils, sparks or flames;
- (2) Do not use in the environment with conditions of excessive heat;
- (3) Replace if damaged, heavily contaminated or in accordance with local practice;
- (4) Hand and dispose of contaminated products with care and in accordance with national regulations.



Keep away from sunlight



Use only once



Keep dry



Don't use when packing damaged and consult instructions for use



Medical device



Caution



Non-sterile



Consult instructions for use or consult electronic instructions for use



CE Symbol

Design:

Check:

Approve:

Date: