

# DSP8X8

## FULL MATRIX 8X8 DIGITAL SIGNAL PROCESSOR

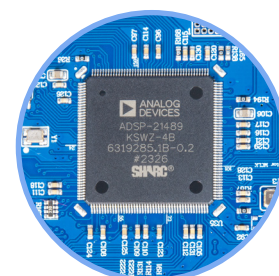
The DSP8X8 is an advanced 8-input, 8-output digital signal processor designed for conference rooms and background music systems. It supports both mic and line level inputs and includes a 2-in/2-out USB audio interface. Key features include automatic feedback and echo cancellation, noise suppression, gain control, matrix routing, and FIR filtering. With 24-bit / 48 kHz AD/DA converters and powerful 32-bit floating-point DSP processing, it delivers professional-grade audio quality. It also supports control of PTZ cameras via RS232 or RS485 and integrates with external systems through GPIO, TCP/IP, and standard serial protocols.



Technical Specifications	DSP8X8
Power supply	~ 115-230 V, 50/60 Hz
Power consumption	14 W
Inputs	8 x balanced Phoenix
Input impedance	16 kΩ
Maximum input level	Line: 17 dBu Mic: -3 dBu
Outputs	8 x balanced Phoenix
Output impedance	150 Ω
Maximum output level	+10 dBu
Maximum gain	-40 dBu
Frequency Response	20 Hz - 20 kHz
Distortion	Line: -90 dB (@ 17 dBu, 1 kHz) Mic: -90 dB (@ -6 dBu, 1 kHz, 20 dB gain sensitivity)
S/N ratio	Line: 110 dB (@ 17 dBu, 1 kHz) Mic: 100 dB (@ -6 dBu, 1 kHz, 20 dB gain sensitivity)
AD / DA converter	24 bit / 48 kHz sampling rate
DSP process	32 bit float point DSP 400 MHz
System delay	< 3 ms
Control protocols	RS232, RS485, TCP/IP, GPIO
Control ports	USB Type B, RJ45, USB, phoenix
Indicator lights	Input signal, Phantom power, Link, Output signal
Supported OS	Windows
Dimensions	483 mm x 265 mm x 44.5 mm
Weight	3.3 kg



Control software  
for Windows OS



High Performance Fourth  
Generation Analog devices  
SHARC Audio Processor

# DSP8X8

## FULL MATRIX 8X8 DIGITAL SIGNAL PROCESSOR

Front panel view



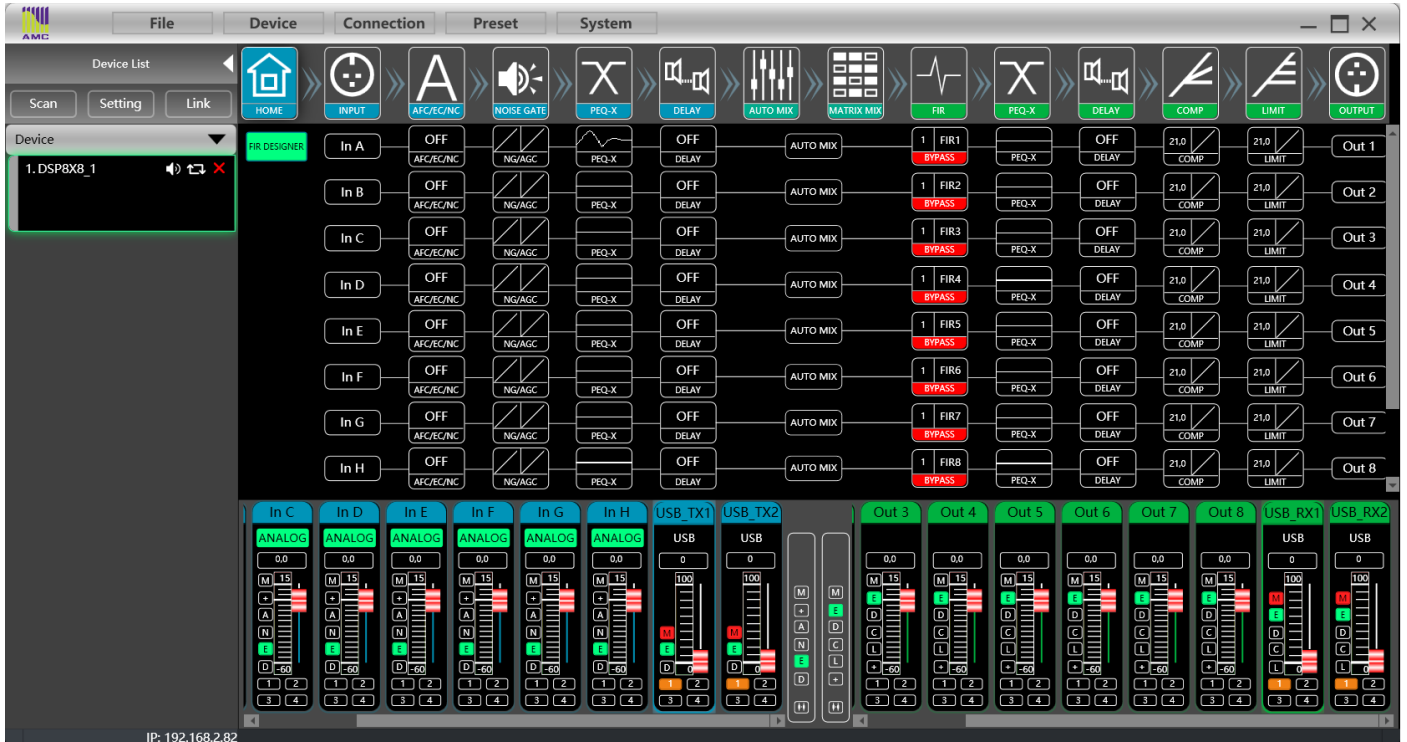
Rear panel view



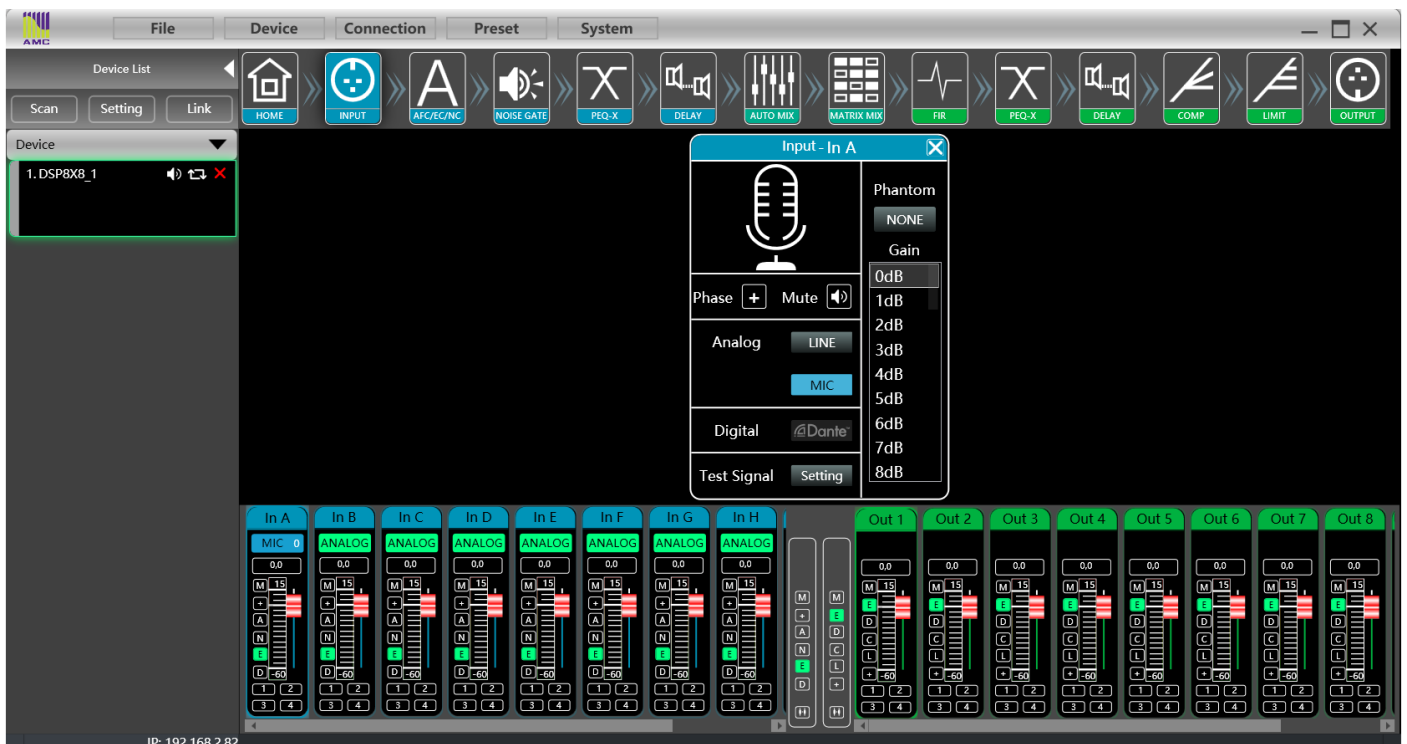
# DSP8X8

## FULL MATRIX 8X8 DIGITAL SIGNAL PROCESSOR

Fixed structure DSP.



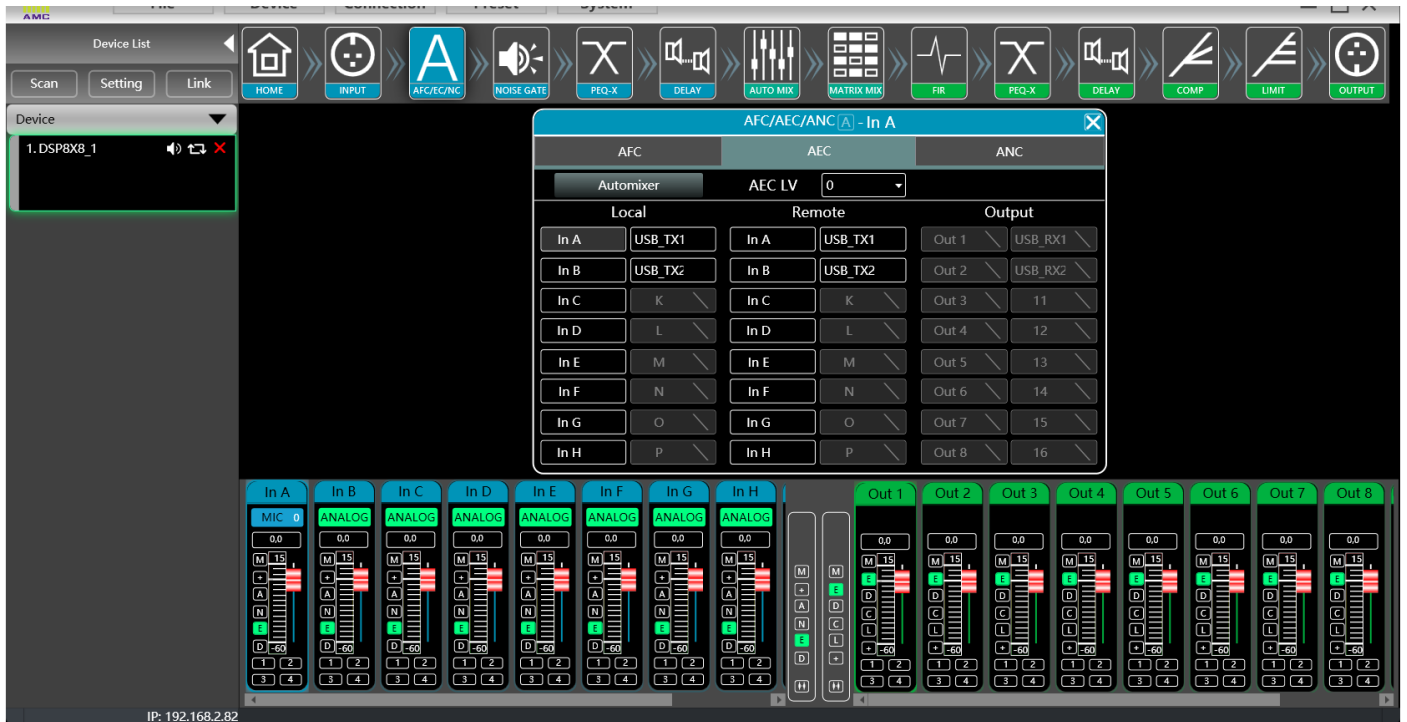
MIC/Line level balanced inputs with phantom power and gain control.



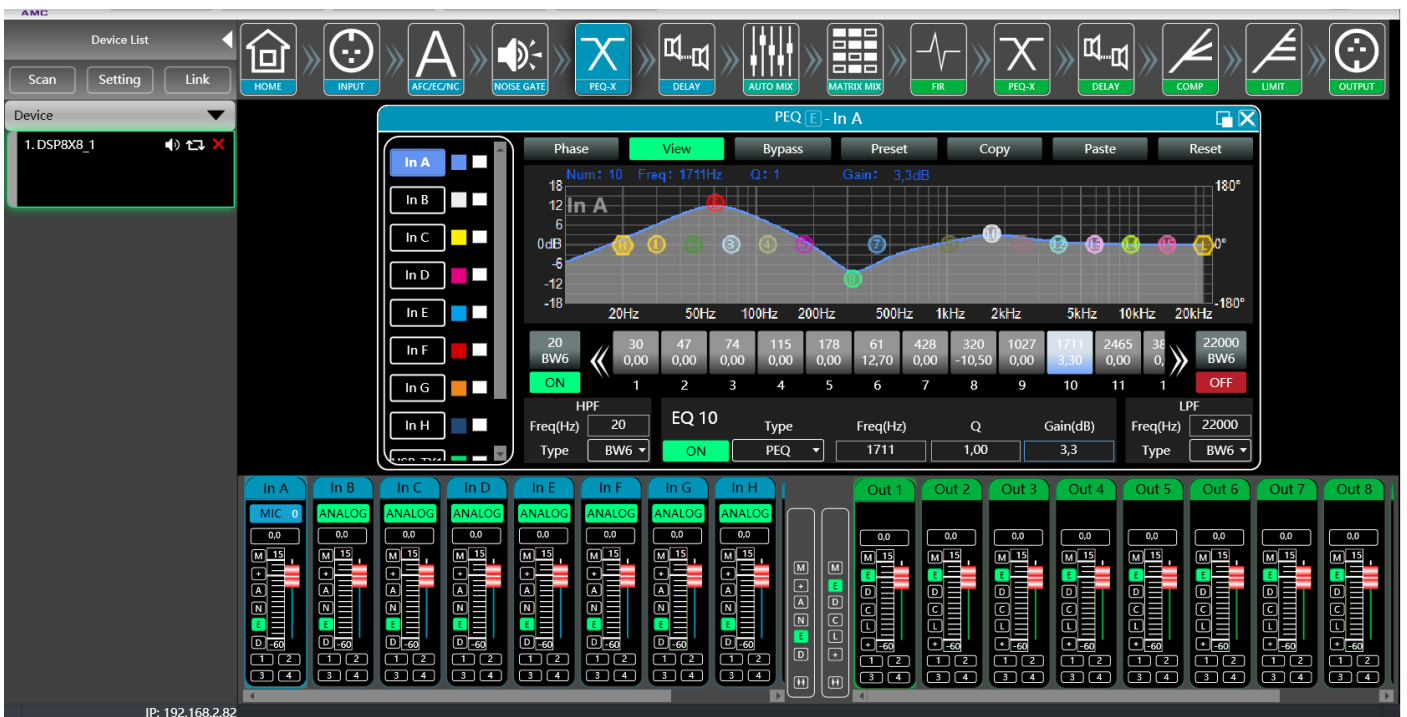
# DSP8X8

## FULL MATRIX 8X8 DIGITAL SIGNAL PROCESSOR

Anti feedback, ambient noise compensation and auto echo canceling.



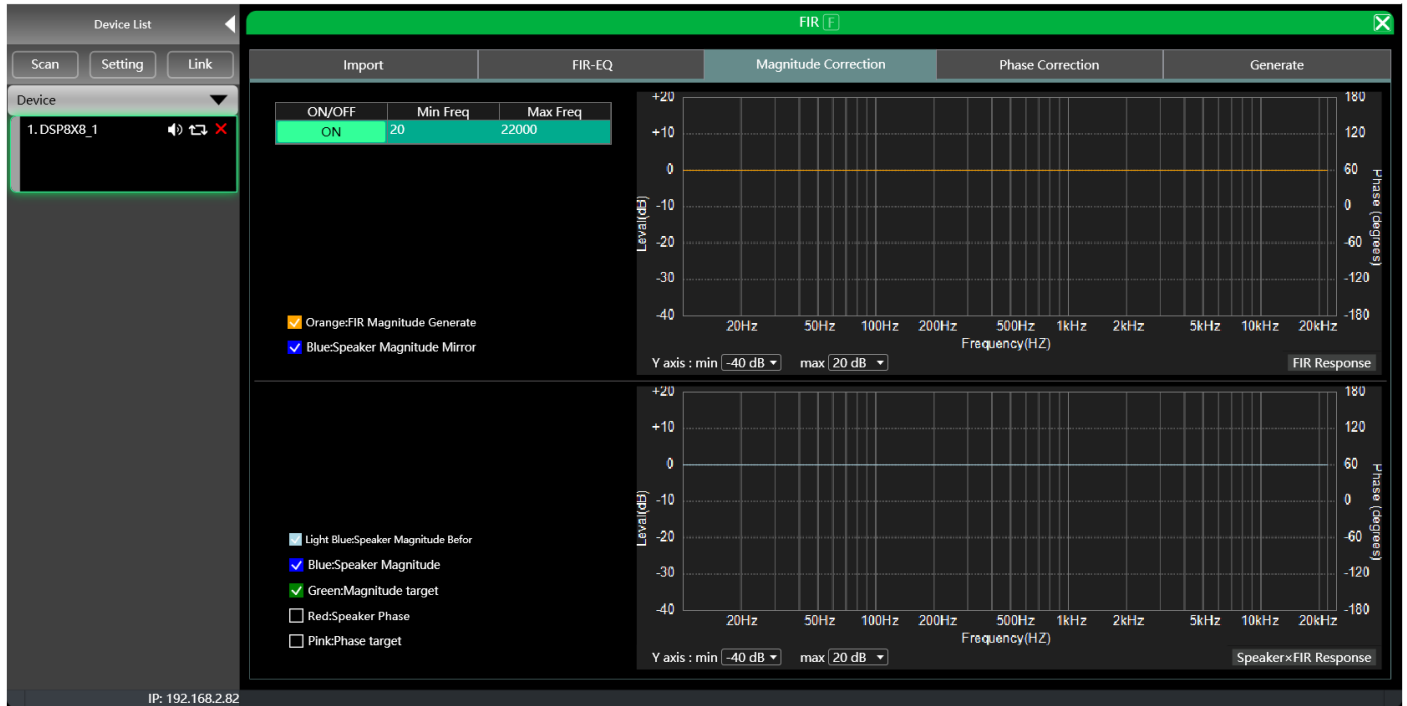
Parametric EQ, crossover, input gate, compressor limiter.



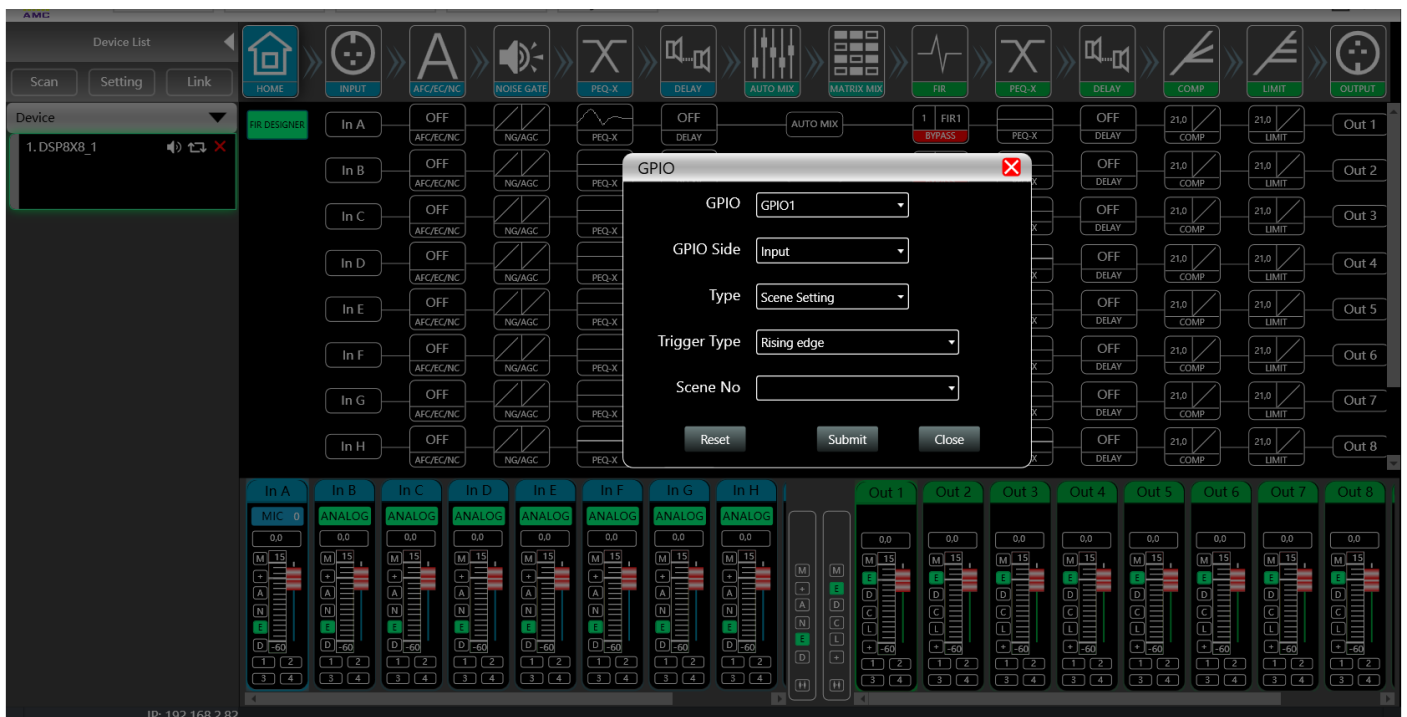
# DSP8X8

## FULL MATRIX 8X8 DIGITAL SIGNAL PROCESSOR

FIR filter designer.



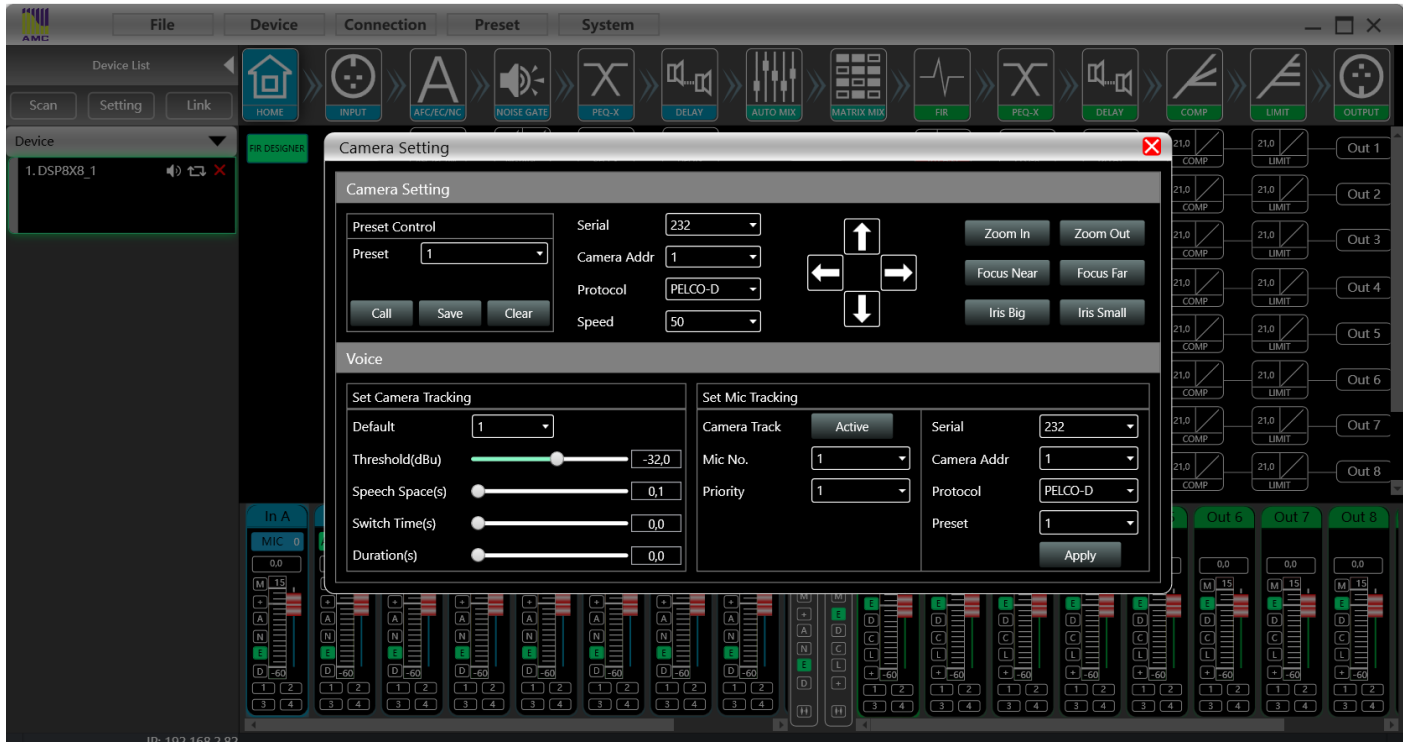
TCP/IP, RS232, RS485, GPIO control.



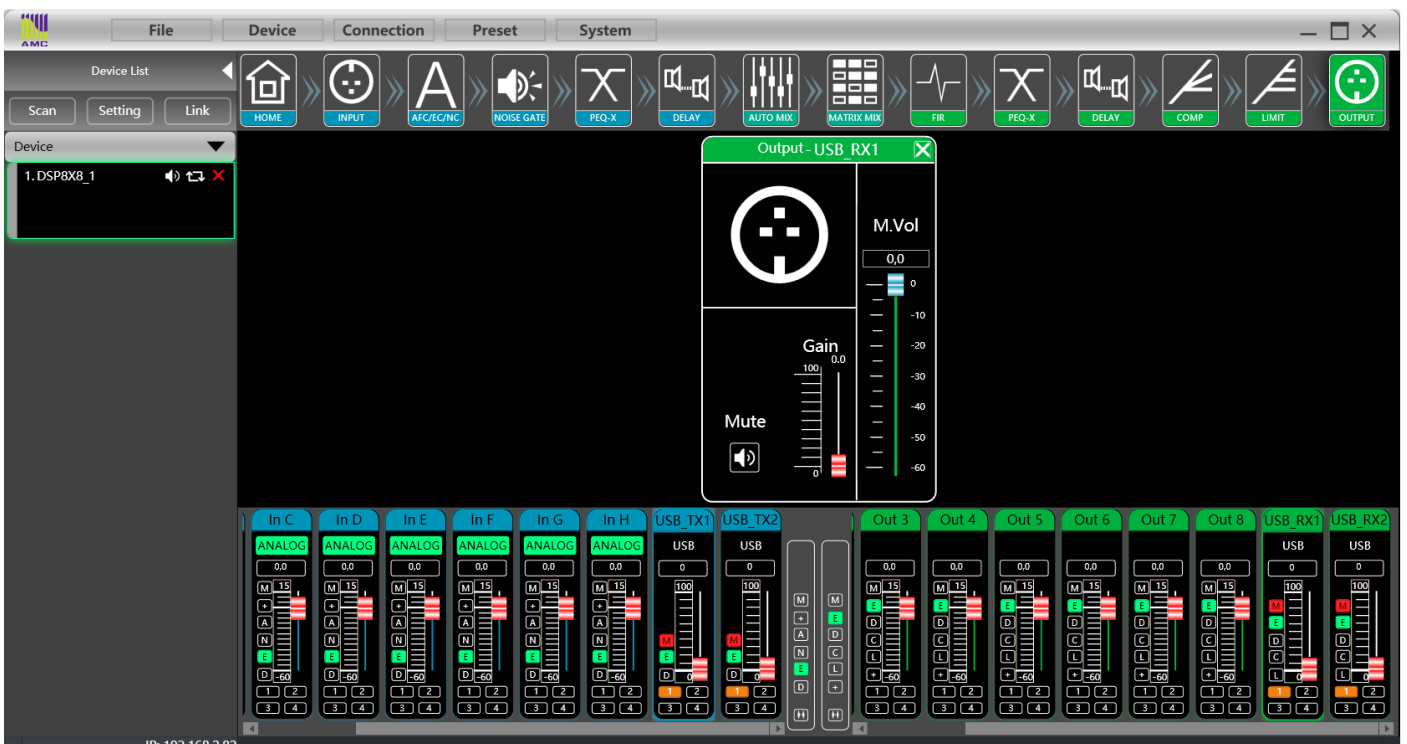
# DSP8X8

## FULL MATRIX 8X8 DIGITAL SIGNAL PROCESSOR

Can be used to control video cameras in conference room.



Can be used as 2x2 USB audio card.



# DSP8X8

## FULL MATRIX 8X8 DIGITAL SIGNAL PROCESSOR

High quality ES9038 SABRE DAC and high-resolution, low-distortion and wide-dynamic-range Burr-Brown™ ADC ADC6140.

High Performance Fourth Generation Analog devices SHARC Audio Processor.

DAC sampling rate 24 bit/48 kHz.

