

Vexve shut-off butterfly valve

Series BFSW2/GS, welding / welding, GOST, full bore, DN 300-800, PN 25

Page 1



DN 300-800

Materials

Body	DN 300-500: Steel, P235GH (1.0345) DN 600-800: Steel, P355 NL1 (1.0566)
Disc	DN 300-800: Stainless steel, GX5CrNiMo19-11-2 (1.4408)
Seat	DN 300-800: 1.4542 + HCr plating
Stem	DN 300-800: Stainless steel, X3CrNiMoN27-5-2 (1.4460)
Stem seal	DN 300-800: FPM
Bearing	DN 300-800: PTFE + AISI 316 net

Mounting

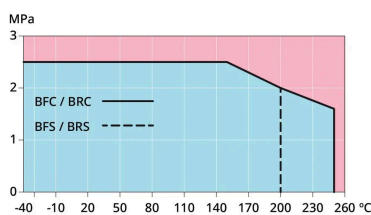
welding / welding, GOST

Operation

DN 300-800 manual gear

Operating conditions

Body	PN 25
Trim	
Temperature	-40 °C - +200 °C
Leakage rate	A or B (EN 12266-1) depending on requirement



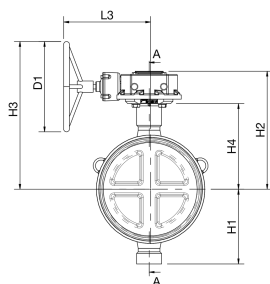
DN 300-800

Below 0 °C contact manufacturer. Lowest allowed ambient temperature -40 °C.

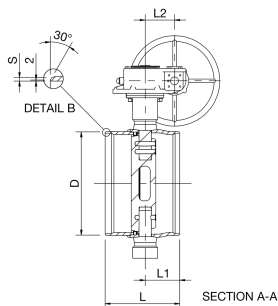
Vexve shut-off butterfly valve

Series BFSW2/GS, welding / welding, GOST, full bore, DN 300-800, PN 25

Page 2



DN 300-800



DN 300-800

Dimensions

DN	PN	Product no.	D	D1	H1	H2	H3	H4	L	L1	L2	L3	S	Kg
300	25	BFS300W2/GS	325.0	400	247.0	432	583	315	270	110.0	105	331	7	80
350	25	BFS350W2/GS	377.0	400	255.0	443	593	325	290	134.0	105	331	8	97
400	25	BFS400W2/GS	426.0	500	285.0	490	672	347	310	157.0	130	393	8	117
450	25	BFS450W2/GS	478.0	400	330.0	522	654	379	330	153.0	130	386	8	176
500	25	BFS500W2/GS	530.0	400	360.0	551	683	408	350	153.0	130	386	9	195
600	25	BFS600W2/GS	630.0	500	440.0	628	787	450	390	184.0	140	419	11	319
700	25	BFS700W2/GS	720.0	400	495.0	684	784	501	430	203.0	182	441	12	448
800	25	BFS800W2/GS	820.0	500	581.0	791	948	573	470	226.0	209	483	12	771