

FilterWire EZ™

Embololic Protection System



Predictable protection made easy

With its advanced technology designed for simplicity and effectiveness, the FilterWire EZ Embolic Protection System is designed to deliver efficient, predictable protection.

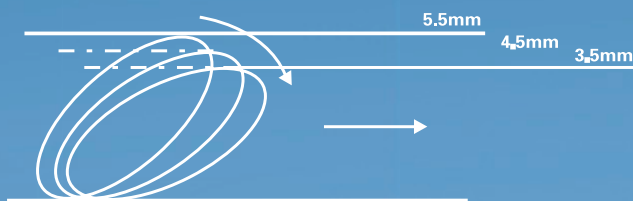
Ease of Use

Captures Debris Efficiently

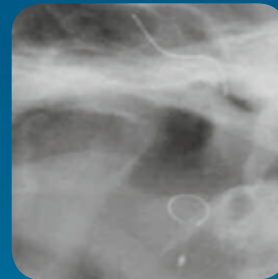
- Uniform 110-micron-pore filter is designed to permit continuous blood flow while maintaining embolic capture efficiency
- Suspended nitinol filter loop is intended to provide 360° apposition in straight or tortuous anatomy
- Radiopaque loop allows full deployment verification with one angiographic view

Easy to Deliver and Retrieve

- Pre-loaded rapid-exchange protection wire with peel-away delivery sheath is intended to simplify device preparation
- Highly flexible system is designed to provide excellent tracking through tortuous anatomy
- 3.2F crossing profile, tapered nosecone and silicone-coated tip are designed to facilitate lesion crossing
- Retrieval sheath is designed to maximize filter coverage while withdrawing through a deployed stent



The FilterWire EZ System has a conforming, nitinol filter loop.



Full filter deployment is angiographically confirmed.*

Clinical Efficacy

Clinically Proven Technology

- The BEACH Trial results demonstrate safety and efficacy of the FilterWire EZ System with the Carotid WALLSTENT® Monorail® Endoprosthesis
- Death, stroke and MI rate at 30 days was 5.6% (27/478)**

BEACH Trial†

Ipsilateral Stroke Rate at 30 Days (N=478)

Pivotal Group Ipsilateral Stroke	3.1%
--	-------------

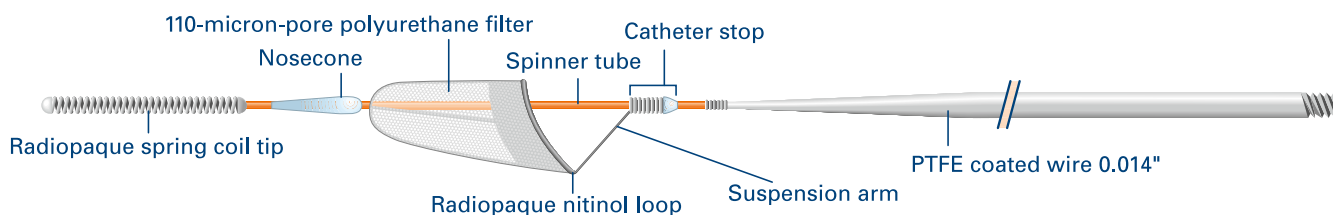
†See BEACH Trial Design and Primary Endpoint data on reverse side.

*Angiographic image provided courtesy of Jim Stewart, MD. Results from case studies are not predictive of results in other cases. Results in other cases may vary.

**Peri-procedural Morbidity and Mortality: Non-Q-wave MI through 24 hours post-procedure and death, stroke and Q-wave MI through 30 days post-procedure.

FilterWire EZ™

Embolic Protection System



Product Information

6 F Guide Catheter Compatible

Order Number	Order Description	Crossing Profile	Retrieval Profile F/inches/mm	Reference Vessel Diameter
H749 20105 1900	FilterWire EZ System, 190 cm*	3.2F (1.1 mm, 0.042")	4.3/0.056/1.42	3.5 mm–5.5 mm
H749 20105 3000	FilterWire EZ System, 300 cm	3.2F (1.1 mm, 0.042")	4.3/0.056/1.42	3.5 mm–5.5 mm
H749 50100 1500	EZ Bent Tip Retrieval Sheath	4.0F (1.3 mm, 0.052")	4.0/0.053/1.33	NA

*Compatible with AddWire™ Extension Wire. Five-pack order code H749 22150 010.

**Boston
Scientific**
Advancing science for life™

www.bostonscientific.eu

All cited trademarks are the property of their respective owners. CAUTION: The law restricts these devices to sale by or on the order of a physician. Indications, contraindications, warnings and instructions for use can be found in the product labeling supplied with each device. Information for the use only in countries with applicable health authority product registrations. This material is not approved for use or distribution in France.

PI-433701-AA OCT2016 Printed in Germany by medicalvision.

© 2016 Boston Scientific Corporation or its affiliates. All rights reserved. DINPER4701EA