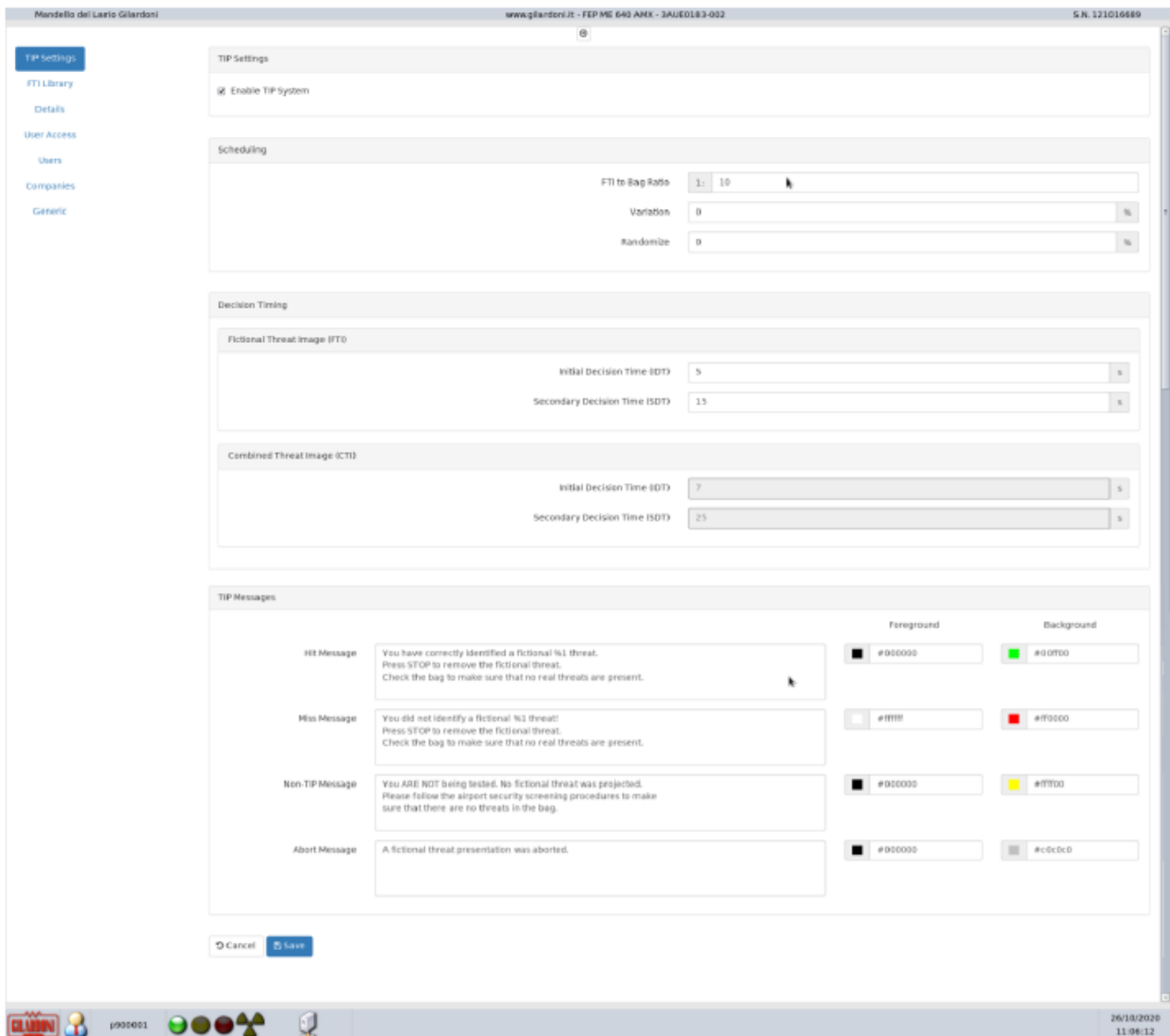




TMS

Threat Image Projection Software Management System User Manual





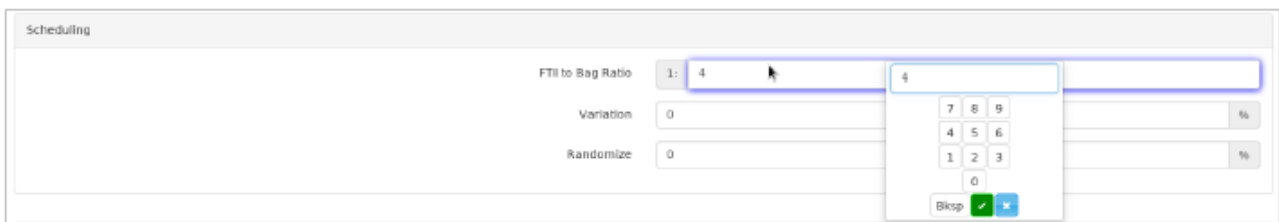
TMS 23: TIP Settings

The **Scheduling** section allows users to configure the presentation of Fictional Threat Images (FTI) using three criteria (Figure TMS 23: TIP Settings):

- **FTI to Bag Ratio** – Indicates after how many baggage scans an FTI will be inserted by the system. The range of permissible values is from a minimum of 4 to a maximum of 200. For example, if the FTI to Bag Ratio is set to 1:50, one FTI will be presented exactly every 50 bags (if Variation and Randomize are set to zero).
- **Variation** (of TIP presentations) – It is possible to make the ratio between FTI and Bag variable. The range of permissible values is from a minimum of 0 to a maximum of 100. For example, putting a variation of 10% on a FTI to Bag ratio of 1:50 will present an FTI between the 45th baggage image and the 55th baggage image.
- **Randomize** – It is used to add additional scheduling variety to that offered by the FTI to Bag ratio and variation. The randomize ratio is a setting based on a percentage, the range of permissible values is from a minimum of 0 to a maximum of 100. If the randomize ratio is set to 10% then 1 in 10 FTI will be presented randomly as opposed to following the FTI to bag ratio and variation.

For example with an FT to Bag ratio of 1:50 and a variation of 10% an FTI will be presented somewhere in between bag 45° and bag 55°. With a Random ratio of 5% there will be a 1 in 5 chance that the FTI scheduled for projection between bags 45° and 55° will be projected at a totally random interval.

To configure the FTI “Scheduling”, it is necessary to enter the data by clicking in the FTI/Bag ratio and/or Variation and/or Randomize field (see figure *TMS 24: Scheduling*) and the numeric keypad will appear for entering the values.



TMS 24: Scheduling

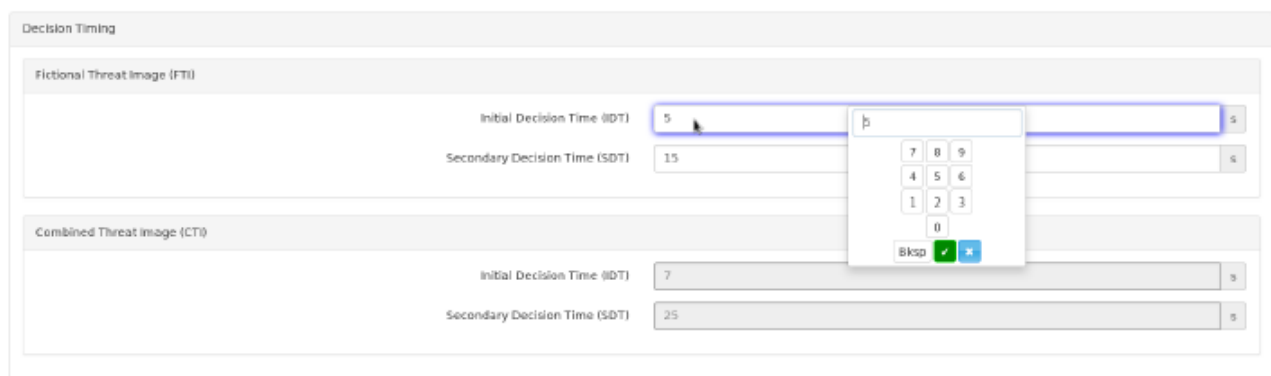
To apply the modified to the settings section, you must save them. To undo the modified entered and not saved click on the “Cancel” button, the previous data will be displayed (about the cancel and save buttons see Figure *TMS 23: TIP Settings*).

Decision Timing permits the amount of time a screener has available to identify the FTI entered to be configured, before the system times out and the FTI is recorded as “Miss” by the operator. The decision time can be set by the user for the FTI while for the combined threat image (CTI) they are set by the software.

When a FTI is inserted into the baggage image or a CTI is presented, the operator should identify it within the set decision times.

As soon as an FTI/CTI displayed the “Initial Decision Time (IDT)” starts, meanwhile, if the operator clicks on the stop button, the “Secondary Decision Time (SDT)” starts. If within the IDT or SDT time the operator reports the presence of a threat, the FTI/CTI will be registered as Hit (detected by the operator) otherwise Miss (not detected by the operator).

To configure the “Decision Timing” of the FTI, it is necessary to click in the field “Initial Decision Time (IDT)” and/or “Secondary Decision Time (SDT)” field, the numeric keypad for entering values will appear (see figure *TMS 25: Decision Time*). The range of permissible values is from a minimum of 1 to a maximum of 100.




TMS 25: Decision Time

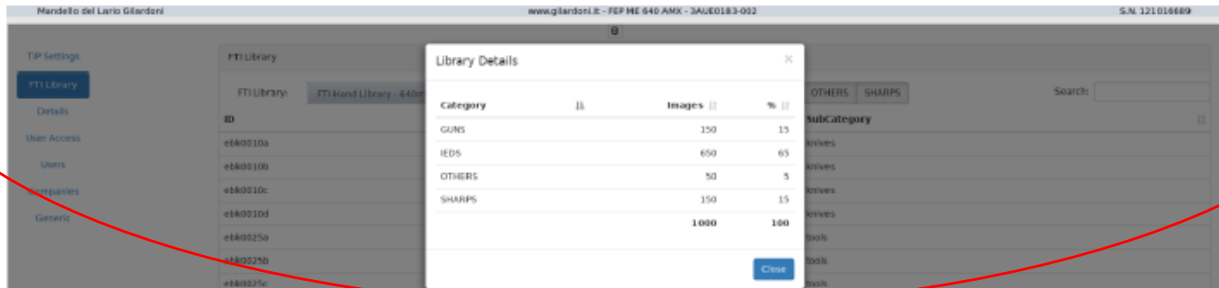
1.2.2.2 FTI LIBRARY

In compliance with current European regulations (E.C.A.C.), Gilardoni S.p.A. a Socio Unico provides for the annual updating of 10% of the objects contained in the library.

FTI categories provided are:

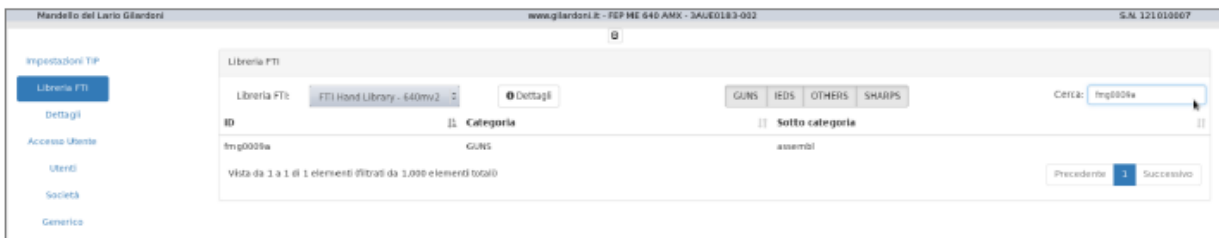
- Guns,
- IEDS,
- Others,
- Sharps.

The  button allows you to know how many types of categories, how many images (FTI) per category and the percentage of images of each category on the total.



TMS 29: Library Details

To filter FTI, click in the "Search" box (see TMS Figure 30: Search FTI) and enter the FTI ID or category or subcategory.



TMS 30: FTI Research

1.2.2.3 DETAILS

The Details Functionality shows the non-editable fields of the serial number, the model of the X-ray machine in use and the editable fields (see Figure TMS 32: Edit Details):

- Airport;
- Terminal;
- Area.