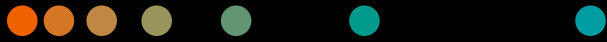


ACUSON P500 Ultrasound System

Ultrasound Anytime, Anywhere

siemens-healthineers.com/p500



*The clinical overlay is not that of the individual pictured.
It was modified for better visualization.*

SIEMENS
Healthineers

Enabling ultrasound imaging anytime, anywhere

Siemens Healthineers engineered the compact ACUSON P500, a portable ultrasound system designed to equip clinicians with a powerful lineup of clinical applications right at the bedside.

Focused entirely on the user, the ACUSON P500 is your go-to platform to evaluate clinical manifestations, facilitate accurate diagnoses, and to assist procedures in emergency and critical care.

The ACUSON P500, with a smaller footprint in a crowded technology environment, also offers an Intracardiac Echocardiography (ICE) Edition that integrates the imaging capabilities of the ACUSON AcuNav family of catheters to the ACUSON P500 system. The utilization of the 5VT transesophageal transducer and Vector Velocity Imaging (VVI), ACUSON P500 provides a complete platform in shared service Cardiology. The new 18H5 hockey

stick transducer will allow the ACUSON P500 to assist in several near field applications. With the 11M3 micro-convex transducer, the ACUSON P500 can give accurate diagnoses in pediatric exams.

With the ACUSON P500, Siemens Healthineers is enabling quality care with ultrasound imaging anytime, anywhere.



See better

Overcome the challenges of motion artifacts and achieve high quality images.



Scan faster

Ability to greatly improve workflow powered by an innovative and user friendly interface with integrated touch technology and quick boot-up times.



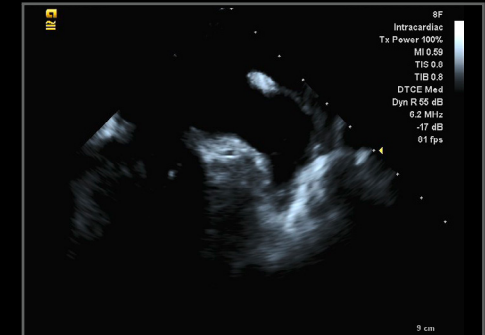
Go further

Offer exceptional detail and quality of information with 15 innovative transducers, advanced intracardiac echo imaging capabilities, needle guidance solutions, and much more.

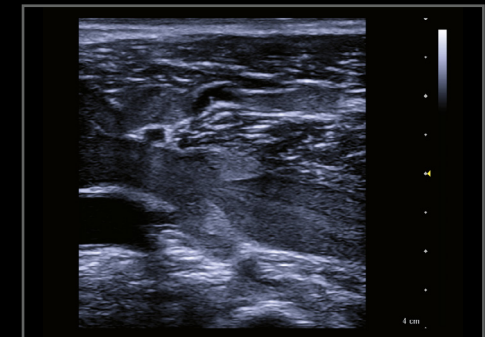


Advanced Technology to See Better, Scan Faster and Go Further

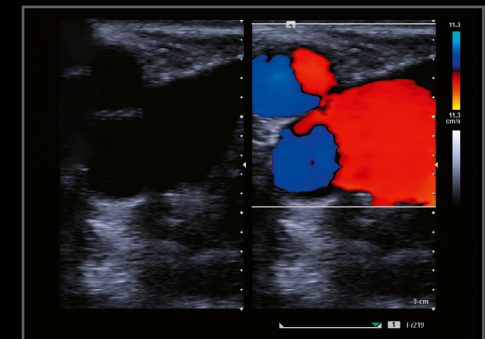
The ACUSON P500 enables reliable and fast imaging by offering new and pioneering high-end imaging technology. It provides standardized, high-quality images with more depth, clearer border definition and more tissue variation.



Clearly delineate cardiac structures, such as the left atrial appendage and pulmonary vein



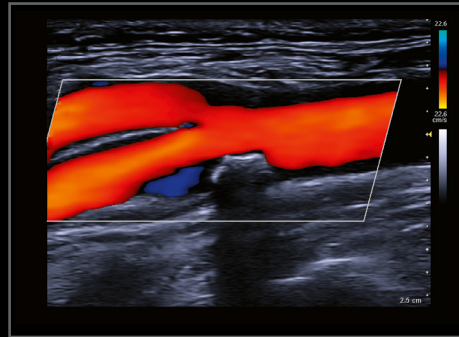
Scan rapidly through lower extremity veins with excellent image clarity and reduced image noise with Dynamic Persistence.



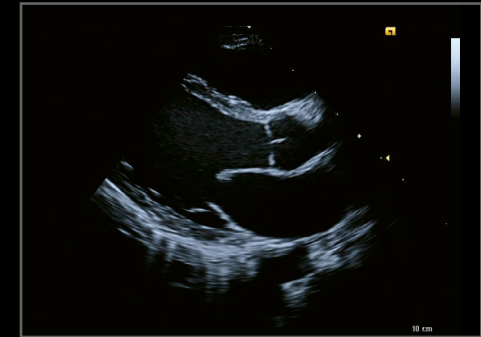
Dynamic Persistence and Auto Flash Artifact Suppression reduce tissue motion and color Doppler artifact, such as the lower extremity vessels.



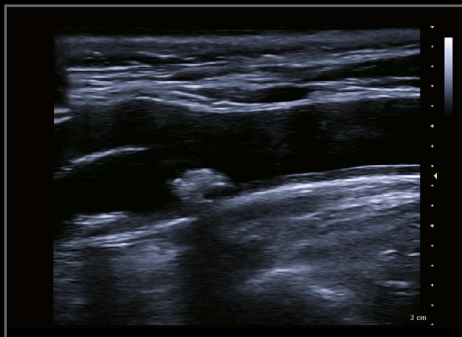
Clearly visualize ventricular cardiac structures for ablations and function assessment.



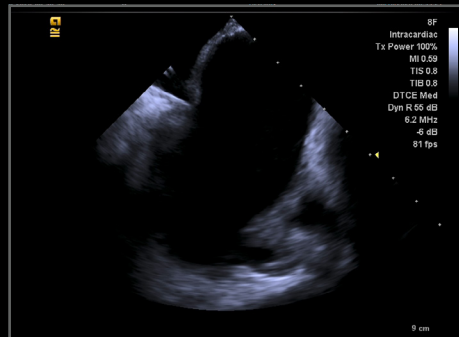
Auto Flash Artifact Suppression reduces color Doppler flash while simultaneously enhancing color sensitivity in the carotid artery.



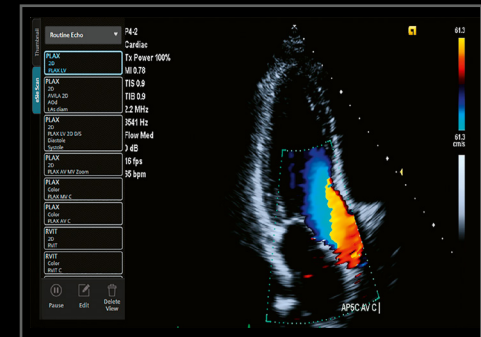
Motion correction technology improves diagnostic confidence while performing dynamic scans of Parasternal Long-Axis (PLAX) view.



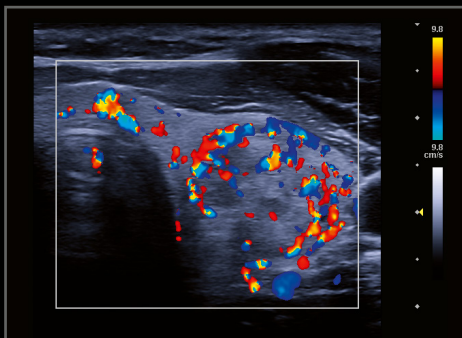
Touch interface allows users to more easily interact with the imaging parameters on the screen for increased workflow efficiency.



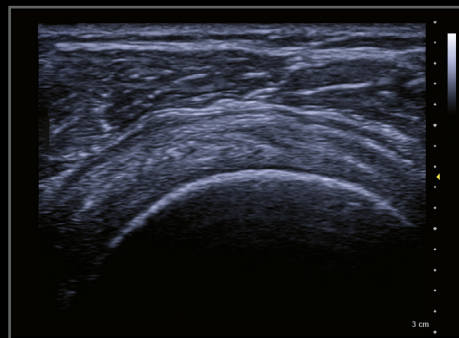
Excellent contrast resolution and visualization of subtle tissue differences as seen in this image of tenting for a transeptal puncture.



Anticipate and execute your exam based on customizable programs using eSieScan workflow protocols such as in this annotation and measurement of Apical 3 Chamber with color Doppler.



Auto Flash Artifact Suppression allows you to scan rapidly without flash artifact, such as in this color Doppler of a thyroid nodule.



Motion correction technology improves diagnostic confidence while performing dynamic scans of joints in motion, such as this shoulder.



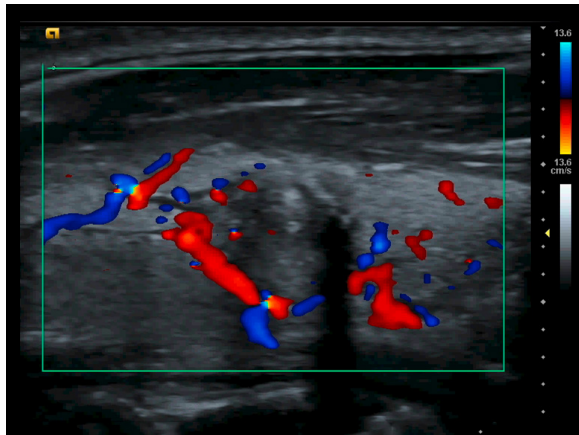
Evaluate cardiac function and mechanics with syngo® velocity vector imaging.



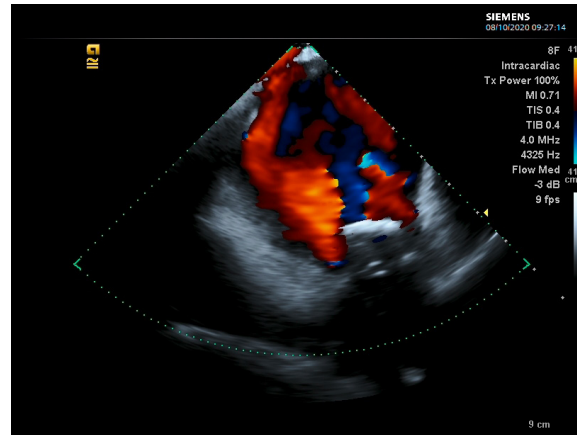
See Better

The ACUSON P500 improves image quality with exclusive motion correction and a diverse range of applications and features designed specifically for your area of expertise. With innovative technology of Siemens Healthineers, image quality is paramount.

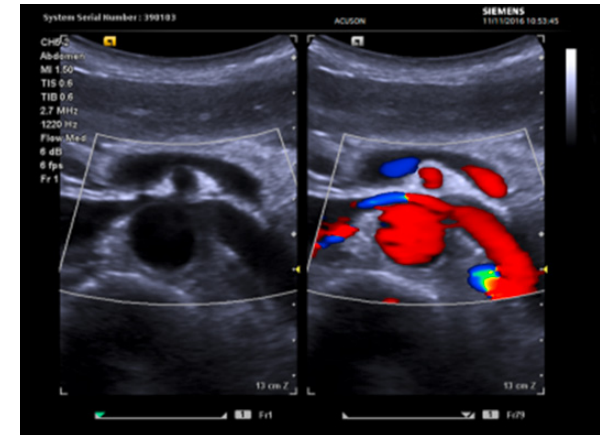
**Therapeutic exams:
Less complicated and
more standardized**



Reduce motion artifacts and noise while simultaneously enhancing color sensitivity with Dynamic Persistence and Auto Flash Artifact Suppression technology.



Visualize structures deeper in the far field with adequate penetration and Auto Flash Artifact Suppression, as seen in this color Doppler image of the pulmonary veins.



Leverage Clarify vascular enhancement (VE) technology that uniquely utilizes power Doppler flow information to enhance B-mode imaging.



Scan Faster

The ACUSON P500 offers a wide range of innovative applications that make diagnostic and therapeutic exams less complicated and more standardized. Exclusive automated solutions available with the ACUSON P500 improve scan time, expedite workflow and increase operational efficiency.

Perform a wide range of exams with the Stress Echo application, which creates user-defined protocols and offers flexible review formats and visual analysis.

Improve accuracy and reproducibility with the eSie Measure workflow acceleration package, the first application that provides automated measurements for routine echo exams.

Reduce training time, variability in skill and operation errors with eSieScan Protocol, a unique semi-automated guided workflow designed to automate and simplify routine tasks.

Updated digital interface for easier and more reliable connection with Cartosound®.







Go Further

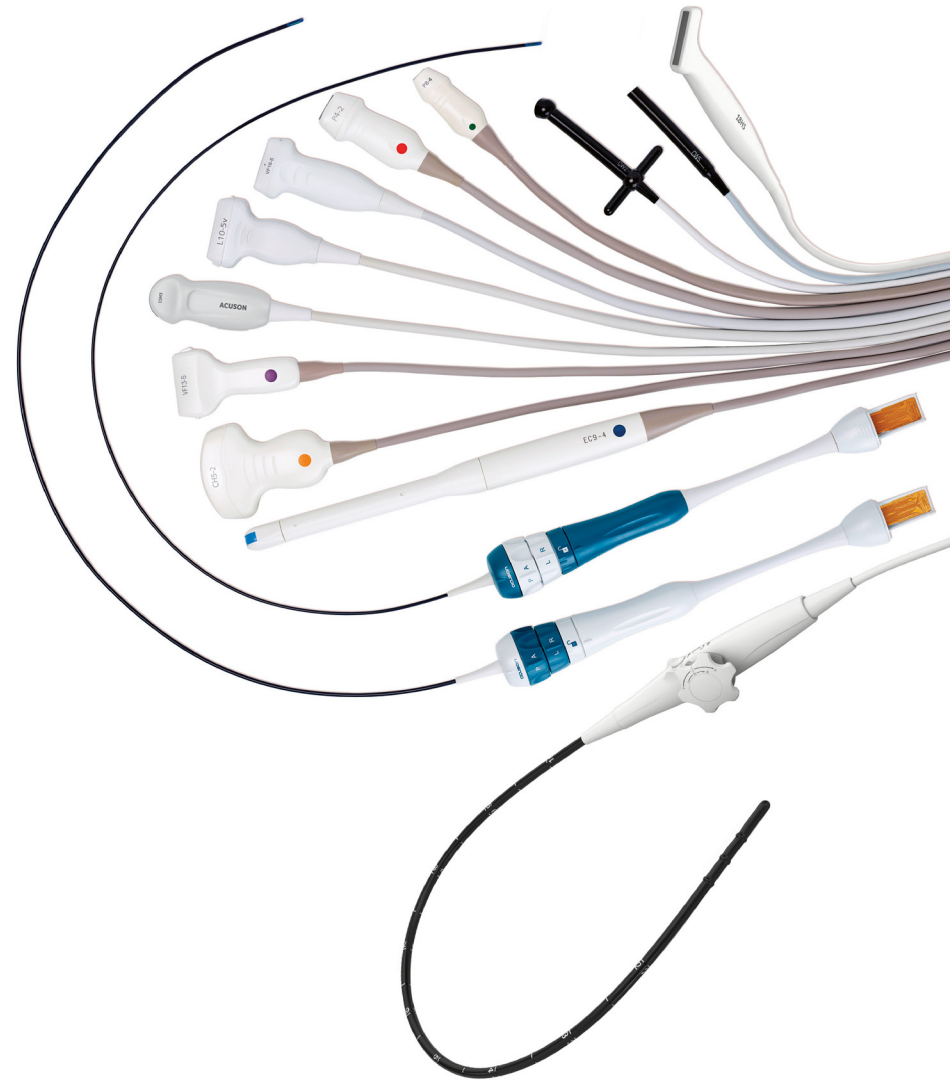
The ACUSON P500, with its unmatched diagnostic and workflow solutions, enables you to work more efficiently, consistently and clearly with powerful applications that enable you to increase patient throughput.

Improve visibility with Needle Visualization Enhancement that employs unique multi-beam spatial compounding and other optimization techniques while still maintaining excellent image quality, especially at steeper angles.

Utilize a wide range of anatomy specific transducers that cover multiple applications.

Reduce noise for image clarity and minimize artifact caused by ablation technique using the newly engineered SwiftLink catheter connector for ACUSON P500.

**Work more efficiently,
consistently and
clearly with powerful
applications.**



Committed to your unique service needs

Your reputation as a healthcare provider and your financial success rely on best-in-class staff expertise, exceptional system performance, and seamless clinical workflows. Designed to adapt to highest standards of care – from technical compliance standards to system usability – with the ACUSON P500 you can rest assured that the equipment you invest in today will be up-to-date and ready to integrate the most advanced technologies for years to come. This allows you to manage costs without compromising the quality of care.

Service features ensure your system is ready to go when you are

Built onto the ACUSON P500 are a number of service features that enhance your experience and allow for faster problem-solving, both on-site as well as online.

New Transducer Diagnostics enables faster on-site diagnosis and troubleshooting of transducer failures. A Virtual Control Panel mimics the system's control panel so that our technical experts can view your system and provide remote support when needed*. And Anytime Software Updates allow you to install important updates on your own schedule.

We keep your system running so that you can get back to doing what you do best: taking care of your patients.

**Remote connection required*



Feature overview

ACUSON P500 Ultrasound System

The portable ultrasound system is designed to provide clinicians with an innovative and diverse range of applications and features at the point-of-care so they are able to see better, scan faster and go further.

ACUSON P500 Ultrasound System, ICE Edition

The Intracardiac Echocardiography Edition integrates the imaging capabilities of AcuNav ultrasound catheter technologies of Siemens Healthineers with the ACUSON P500 ultrasound system to provide real-time visualization of cardiac anatomy.

Options	ACUSON P500	ACUSON P500, ICE Edition
Motion Correction Technology	●	●
Tissue Harmonic Imaging (THI)	●	●
DTI Doppler tissue imaging capability	●	●
Advanced SieClear Spatial Compounding	●	●
Wireless Data Transfer	●	●
Dynamic TCE tissue contrast enhancement technology	●	●
Clarify vascular enhancement (VE) technology	●	●
Cardiac M&R	●	●
Barcode Reader	○	○
Stress Echo Imaging	○	○
SieScape panoramic imaging	○	○
syngo® Arterial Health Package (AHP)	○	○
Pencil Transducers	○	○
eSie Measure workflow acceleration package	○	○
Enhanced Needle Visualization	○	○
eSieScan workflow protocols	○	○
DICOM 3.0 Connectivity (incl. DICOM Structured Reporting)	●	●
Velocity Vector Imaging (VVI) technology	○	○
Intracardiac Echocardiography	N/A	●
SwiftLink catheter connector	N/A	○
JoyStick	N/A	○
CartoSound® Analog Communication (Software 2.0 or 3.0)	N/A	○
CartoSound® Analog and Digital Communication (Software 3.1)	N/A	○

● Standard ○ Optional

The products / features mentioned in this document may not be commercially available in all countries. Due to regulatory reasons their future availability cannot be guaranteed. Please contact your local Siemens Healthineers organization for further details.

Stand-alone clinical images may have been cropped to better visualize pathology.

ACUSON P500, AcuNav, Clarify, DTI, eSie Measure, eSie Scan, SieClear, SieScape, SwiftLink, TCE and TEQ are trademarks of Siemens Medical Solutions USA, Inc.

CartoSound and SoundStar are registered trademarks of Biosense Webster, part of the Johnson & Johnson Family of Companies.

syngo® is a registered trademark owned by Siemens Healthcare GmbH.

To learn more about ACUSON P500 ultrasound systems, please visit us at [siemens-healthineers.com/p500](https://www.siemens-healthineers.com/p500).

At Siemens Healthineers, we pioneer breakthroughs in healthcare. For everyone. Everywhere. Sustainably. As a leader in medical technology, we want to advance a world in which breakthroughs in healthcare create new possibilities with a minimal impact on our planet. By consistently bringing innovations to the market, we enable healthcare professionals to innovate personalized care, achieve operational excellence, and transform the system of care.

Our portfolio, spanning in vitro and in vivo diagnostics to image-guided therapy and cancer care, is crucial for clinical decision-making and treatment pathways. With the unique combination of our strengths in patient twinning¹, precision therapy, as well as digital, data, and artificial intelligence (AI), we are well positioned to take on the greatest challenges in healthcare. We will continue to build on these strengths to help overcome the world's most threatening diseases, enable efficient operations, and expand access to care.

We are a team of more than 71,000 Healthineers in over 70 countries passionately pushing the boundaries of what is possible in healthcare to help improve the lives of people around the world.

¹ Personalization of diagnosis, therapy selection and monitoring, after care and managing health.

Siemens Healthineers Headquarters

Siemens Healthineers AG
Siemensstr. 3
91301 Forchheim, Germany
Phone: +49 9191 18-0
[siemens-healthineers.com](https://www.siemens-healthineers.com)

Manufacturer

Siemens Medical Solutions USA, Inc.
Ultrasound
22010 S.E. 51st Street
Issaquah, WA 98029, USA
Phone: 1-888-826-9702
[siemens-healthineers.com/ultrasound](https://www.siemens-healthineers.com/ultrasound)