



Heal Force

EB05

Electrosurgical generator
For standard and Argon-enhanced electrosurgery



**Electrosurgery
with powerful elegance**

Product overview

EB05 is a versatile system designed to deliver standard and argon-enhanced electrocautery.

It features 10 different power settings, 9-channel program memory, max. 400 watt floating output and optional Argon-enhanced system to give optimal cutting and coagulation with minimal tissue damage, which well combines safety and effectiveness for a broad range of electrocautery needs, like General surgery, Cardiology, ENT surgery, Gastroenterology, Gynaecology, Laparoscopy, Neuro surgery, Plastic surgery, Thoracic surgery and Urology (like TURP, TUV).



EB05 Electrocautery generator



Up to 9-channel setting memory for quick response to routine surgery



Optional Argon-plasma coagulation extension



Neutral electrode recognition & contact area monitoring and display

Features

- Microprocessor-controlled output by max. 400 watts (all floating)
- 7 Monopolar and 3 Bipolar power modes
- Automatic power adjustment and compensation for tissue variation
- Return electrode monitoring (REM) system
- 9-channel program memory
- Optional Argon system for enhanced electrocautery
- TURP, TUV capability
- Up to 3 different instruments can be configured simultaneously
- CE marked



For minimal access application

Technical specification

Monopolar				
Cutting mode	Max. power output (watts)	Load (ohms)	Open circuit Vp-p	Crest factor
Pure	400 watts	500 Ω	2,300 v	1.5
Blend1	300 watts	500 Ω	2,700 v	2.1
Blend2	200 watts	500 Ω	3,200 v	2.5
Blend3	150 watts	500 Ω	3,700 v	3.1
Coagulation mode				
Point	120 watts	500 Ω	5,600 v	6.1
Soft	120 watts	500 Ω	3,400 v	6.1
Spray	120 watts	500 Ω	8,500 v	8.3
Bipolar				
Cutting mode				
Standard	70 watts	200 Ω	1,450 v	1.5
Coagulation mode				
Standard	70 watts	500 Ω	240 v	1.5
Precise	70 watts	200 Ω	360 v	1.5

Other

Accessory & supply connection	
Finger-switch pencil	2
Foot-switch pencil	1
Patient return electrode	1
Foot-switch	1
AC power supply	1
Equipotential bonding	1
Power feature	
Rate frequency	512 kHz (110/240vAC,60/50Hz)
Isolated output	YES
Quantitative display of contact area	YES, for "Split" type of neutral electrode
Contact area indicator lamp	10 lamps (one for 10% contact), alarm beep and flicker if contact < 20%
Split/solid neutral electrode definition	YES, "Split" or "Solid" indicator lamp lights up
Adjustable alarm volume	YES
Operational duty cycle	10 seconds ON, 30 seconds OFF
Cooling method	Convection
Regulation	
Type according to EN 60601-1	CF
Protection class to EN 60601-1	class I
Classification acc.to MDD 93/42/EEC	IIb
Physical	
Dimension (WxDxH)	460 x 410 x 160 mm
Weight	11.2 kg

Optional electrosurgical Accessories

*All specifications and figures are subject to change without notice

* If the accessories you need are not listed here, please consult our international distributors or sales representatives

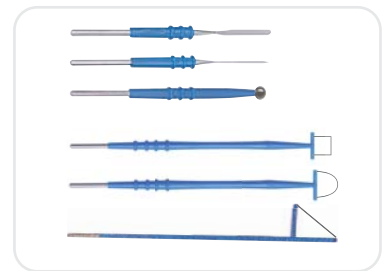
Pencil (or called electrode holder) and control

Ordering No	Description	Remark
7SB-150100-00S	Finger-switch pencil	Disposable
7SB-150102-00S	Foot-switch pencil	Disposable
7SB-150105-00R	Finger-switch pencil	Reusable
7SB-150107-00R	Foot-switch pencil	Reusable
7NZ-310180-100	Bipolar forceps without cable, bayonet-shaped, Tip 1mm/Size 200mm	Reusable
7LX-190110-00R	Connecting cable for bipolar forceps, 3 meters	Reusable
NGD-020	Foot-switch for foot-switch pencil and bipolar forceps	Reusable



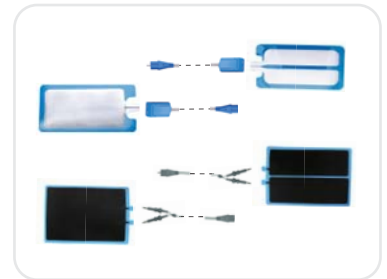
Electrode

Ordering No	Description	Remark
7DJ-150110-00S	Blade electrode, 70mm shaft, sterile	Disposable
7DJ-150120-00S	Needle electrode, 70mm shaft, sterile	Disposable
7DJ-150140-00S	Ball electrode (Φ3mm), 70mm shaft, sterile	Disposable
7DJ-150170-07S	Square loop, W*H=10*7mm, 130mm shaft, sterile	Disposable
7DJ-150175-10S	Semi-round loop, W*H=10*10mm, 130mm shaft, sterile	Disposable
7DJ-150195-00S	Coagulation electrode, 130mm shaft, large, sterile	Disposable



Patient return electrode

Ordering No	Description	Remark
GP202S-A	Patient return electrode without cable, split type, for Adult	Disposable
GP202D-A	Patient return electrode without cable, solid type, for Adult	Disposable
GP202S-P	Patient return electrode without cable, split type, for Children	Disposable
7LX-150602-0DS	Connecting cable for disposable patient return electrode (split type), 3 meters	Disposable
7LX-150602-0SS	Connecting cable for disposable patient return electrode (solid type), 3 meters	Disposable
7JB-150670-0DR	Patient return electrode without cable, split type, for Adult	Reusable
7LX-190305-0DR	Connecting cable for reusable patient return electrode (split type), 3 meters	Reusable
7JB-EB0351-002	Steel return electrode (for EB02, EB03 compact, EB03, EB05)	Reusable



Other accessories

Ordering No	Description	Remark
7SB-FQJ-001	Cable for connecting electrosurgical unit and celioscope	
7BZ-ARTC-001	Mobile cart for EB05 electrosurgical unit	
DDFJ-10-00	Adaptor for thick or thin pin-leg to electrosurgical unit, Φ7mm to Φ6.3mm	
DDFJ-20-00	Adaptor for thick or thin pin-leg to electrosurgical unit, Φ8.5mm to Φ6.3mm	





EB05-AR Argon plasma coagulation system

Why Argon-plasma spray?

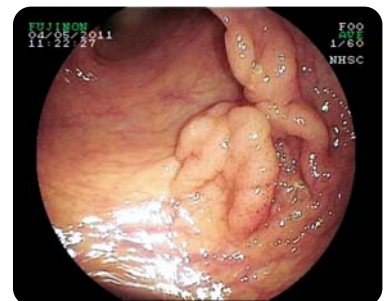
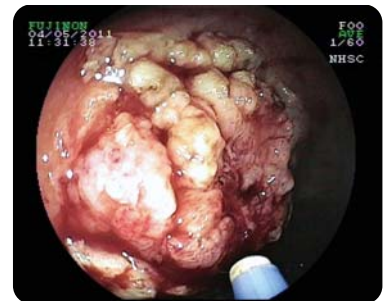
- Non-flammable operation with lower burn risk
- Less surgical smoke allowing clear visibility into operating area
- No contact and adhesion to tissue
- Immediate and uniform hemostasis of large-area bleeding surface
- Thinner and flexible eschar for shorter recovery time and lower rebleeding risk
- Minimal risk of perforation with low penetration depth
(for surgery of parenchymatous organs like liver, kidney and spleen)
- Particular advantage for endoscopic and open surgical procedures



Argon coagulation

Applications

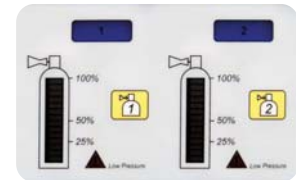
General surgery	Superficial bleeding during
	Abdominal surgery
	Open liver surgery
Thoracic surgery	Heart surgery
	Surface haemorrhages
	Benign endobronchial tumors
ENT surgery	Stent ingrowth / overgrowth
	Superficial muscoal resection
	Subglottic and tracheal resection
Tumor surgery	Nasal Cavity
	Advanced tumor resection
Gastroenterology	Benign or pre-cancerous lesions
	Bleeding during polypectomy resection
	Angiodysplastic gastrointestinal bleeding
	Colon carcinoma
	Erosions, ulcers, or oozing of blood
	Dieulafoy Lesion
	Stenosing tumors
Verrucous gastritis	
Gynecology	Myomectomy
	Endometriosis



Argon coagulation in gastroenterology

Features

- Two gas tank connections
- Automatic tank switch with low pressure trigger
- Automatic hose-purge after changing tank and blockage detection
- Low argon flow (0.5~4 L/min) for endoscopic application
- High argon flow (0.5~12 L/min) for open surgery
- Gas failure alarm with audible and visual indication
- Intuitive error code display for troubleshooting



Argon tank monitoring and switch



High/low flow control

Specification

General	
Dimension (WxDxH)	555x410x155 mm (L x W x H)
Weight	12.5 kg
Power supply	AC 220 VAC ±10% , 50HZ±2%
Temperature (Work/Storage)	+ 5~+40 C / -40~+55 C
Relative Humidity (Work/Storage)	≤ 80% / ≤ 95%
Atmospheric pressure (Work)	700~1060 hPa
Technical	
Low Argon flow	0.5~4 L/min ±15%
High Argon flow	0.5~12 L/min ±15%
Gas filtration	0.3 μ m (internal) / 5 μ m (external)

Optional accessories

Ordering No	Description
7SB-FQJ-001	Cable for connecting ESU and endoscope
7SB-EB05YQ-LCS	Argon plasma catheter
7WC-EB05YQ-LX	Cable for connecting Argon system to ESU
7JF-YQ-001	Pressure regulator for Argon tank
ARB01-10-00	Electrosurgical handset



7SB-FQJ-001



7SB-EB05YQ-LZS



7WC-EB05YQ-LX



7JF-YQ-001



ARB01-10-00



Heal Force Bio-Meditech Holdings Group Nison Instrument (Shanghai) Limited

16th Floor, Building B, SOHO Zhongshan Plaza, 1065 West Zhongshan Road,
Changning District, Shanghai 200051, China

Tel: +86 21 62728646

E-mail: export@healforce.com

Fax: +86 21 62710529

Website: www.healforce.com

Information is subject to change and/or updating without notice.
Copyright © 2014 Heal Force. All Rights Reserved.

P/N:CL-NISON-EN-MEDICALEQUIPMENT-OR-SSC-20140102