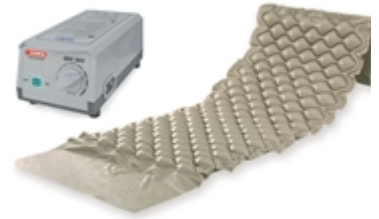




# GIMA

## BUBBLE AIR MATTRESS + COMPRESSOR (28564+28565)

**Code:** 28566  
**Category:** Intensive care anti-decubitus mattresses  
**Unit of sale:** 1 kit  
**Minimum order:** 1  
**Type:** Medical device  
**Class:** I  
**NSIS:** 817830  
**CND:** Y033399  
**EAN13:** 8023279285666



**Description:**

- **BUBBLE MATTRESS**  
Designed for the treatment and prevention of pressure sore stage I in short-term and domiciliary therapies. The PVC mattress is composed of 130 7 cm-high bubble cells, particularly comfortable. Fixable to bed by extra flaps on both top and bottom side. Cold-resistant -30 degrees.  
Flaps length: 50+50 cm (top + bottom).
- **PUMP SYSTEM**  
Special silent pump for an excellent pressure regulation by a knob on the front panel. It can be hung to any kind of hospital bed frame by means of two adjustable hooks. For use with bubble or alternating cell mattresses.

**Technical Specifications:**

**Bubble mattress:**

- Total size: 200 x 90 x 7 cm
- Cell height: 7 cm (2.7")
- Material: PVC
- Thickness: 0.32 mm
- Number of cells: 130
- Suitable for persons up to: 135 kg

**Pump system:**

- Size: 25 x 12 x h 10 cm
- Operating voltage: 220 V, 50 Hz
- Working pressure: 40-100 mmHg
- Air output: 6-7 liter/min
- Cycle time: 6 min
- Plastic casing: Taiwan chimei ABS
- TUV-CE IEC/EN60601-1; 60601-1-2