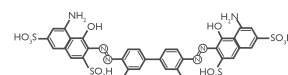


Tekno Epi Blue

- TEKNO EPI BLUE 0.15% (trypanblueophthalmic) injection, solution
- TEKNO EPI BLUE is indicated for use as an aid in ophthalmic surgery by staining the epiretinal membranes during vitrectomy procedures, facilitating removal of the tissue
- Product selectively stains epiretinal membranes and creates excellent contrast
- Presented in glass vial or syringe and ready to use without dilution
- Prepared in a full automated system and presented in blister packets



ml	Syringe	Vial
0.5ml	DTM5S	DTM5V
1ml	DTM1S	DTM1V

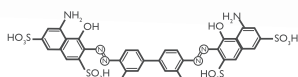
Product description: Presented in Glass Syringe or Glass Vial
Store at room temperature

Product Properties

1.5 mg/ml trypan blue;
1.9 mg/ml sodium monohydrogen orthophosphate ($\text{Na}_2\text{HPO}_4 \cdot 2\text{H}_2\text{O}$);
0.3 mg/ml sodium di-hydrogen orthophosphate ($\text{NaH}_2\text{PO}_4 \cdot 2\text{H}_2\text{O}$);
8.2 mg/ml sodium chloride (NaCl); and water for injection.
Osmolality: 270-400 mOsm/kg
pH: 6.5-7.2

Tekno Capsule Blue

- TEKNO CAPSULE BLUE is purified Trypanblue / isotonic buffered vehicle
- Used in cataract surgery for capsule staining , quick, easy and safe to perform
- Creates excellent staining contrast for anterior and posterior capsulorhexis
- Prepared in a full automated system and presented in blister packets



ml	Syringe	Vial
1ml	DTB106S	DTB106V

Product description: Presented in Glass Syringe or Glass Vial
Store at room temperature

Product Properties

0.6 mg/ml trypan blue
1.9 mg/ml sodium monohydrogen orthophosphate ($\text{Na}_2\text{HPO}_4 \cdot 2\text{H}_2\text{O}$);
0.3 mg/ml sodium di-hydrogen orthophosphate ($\text{NaH}_2\text{PO}_4 \cdot 2\text{H}_2\text{O}$);
8.2 mg/ml sodium chloride (NaCl); and water for injection.
Osmolality: 270-400 mOsm/kg
pH: 6.5-7.2