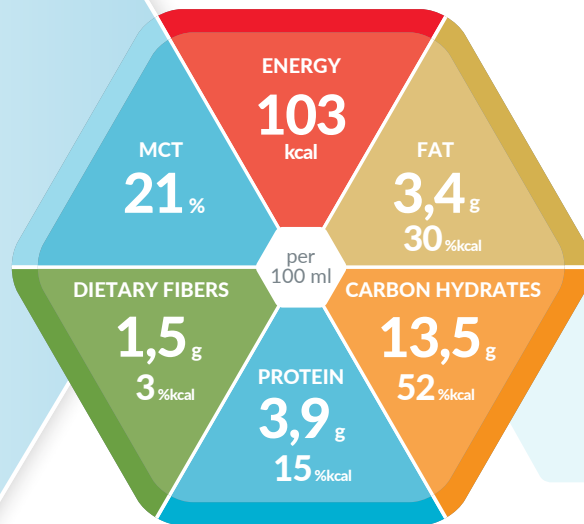




SmartFlex®



SOKALORIC TUBE FEEDING WITH NUTRITIONAL FIBERS

Product Properties

- Normocaloric (1 kcal / ml)
- Patented dietary fiber mix IS50 with 50% soluble and 50% insoluble dietary fibers
- Lactose-free (< 0.05 g / 100 ml)
- Soy and gluten free
- Suitable for exclusive nutrition

Indications

- To meet normal protein and energy needs in the absence or limited ability to provide adequate normal nutrition
- Physiological long-term nutrition in the case of unproblematic course and to improve the frequency of stool

Dosage

- **For exclusive nutrition:**
1,500 to 2,000 ml per day (3–4 SmartFlex®)
- **For supplemental nutrition:**
≥ 500 ml per day or as directed by a physician

Storage

Store unopened in a cool, dry place. If using the spike or universal adapter, apply within 24 hours. Re-seal opened SmartFlex®, store in refrigerator and use within 24 hours.

Special Instructions

Use under medical supervision

- Not suitable for children under 3 years of age
- Do not mix with other food or add to medications
- Not for parenteral use
- Packed under protective atmosphere
- Food for special medical purposes (balanced diet)

List of Ingredients

Water, maltodextrin, milk protein, vegetable oils (canola oil, sunflower oil), dietary fiber/nutritional fiber (pea fiber, acacia gum, fructooligosaccharides, inulin), medium chain triglycerides, minerals (sodium citrate, potassium phosphate, potassium chloride, potassium citrate, sodium chloride, calcium phosphate, magnesium oxide, ferrous lactate, zinc sulfate, copper gluconate, manganese sulfate, sodium fluoride, sodium selenite, chromium chloride, sodium molybdate, potassium iodide), emulsifier [E472c, E471], fish oil, choline bitartrate, vitamins (C, E, niacin, pantothenic acid, B6, thiamin, riboflavin, beta-carotene, A, D, B12, K, folic acid, biotin), stabilizer (carrageenan), antioxidant (E304).

Allergens: Milk, fish.

Nutritional Information

Isosource® Standard Fibre		100 ml
ENERGY:	kcal	103
	kJ	434
Fat , of which	g	3.4
	% kcal	30%
– Saturated fatty acids	g	1.2
– MCTs	g	0.70
– Monounsaturated fatty acids	g	1.5
– Polyunsaturated fatty acids	g	0.70
– Omega-3	g	0.15
– Omega-6	g	0.55
Carbohydrates , of which	g	13.5
	% kcal	52%
– Sugars	g	1.2
– Of which lactose	g	< 0.05
Dietary fiber	g	1.5
	% kcal	3%
– Dietary fiber source		IS50*
Protein	g	3.9
	% kcal	15%
Protein source		casein
MINERALS:		
Sodium	mg	80
	mmol	3.5
Potassium	mg	135
	mmol	3.5
Chloride	mg	100
	mmol	2.8
Calcium	mg	70
	mmol	1.8
Phosphorus	mg	60
	mmol	1.9
Magnesium	mg	17
	mmol	0.71
Iron	mg	1.1
Zinc	mg	1.0
Copper	mg	0.17
Manganese	mg	0.24
Fluoride	mg	0.13
Selenium	µg	7.0
Chromium	µg	11
Molybdenum	µg	13
Iodine	µg	16
VITAMINS:		
Vitamin A	µg RE	110
Vitamin D	µg	1.5
Vitamin E	mg	1.6
Vitamin K	µg	7.0
Vitamin C	mg	11
Thiamine	mg	0.14
Riboflavin	mg	0.17
Niacin	mg NE	1.6
B ₆	mg	0.17
Folic acid	µg	29
B ₁₂	µg	0.38
Biotin	µg	4.6
Pantothenic acid	mg	0.60
Choline	mg	38
Osmolarity	mOsm/l	266
Water content	g	85

RE = retinol equivalent; NE = niacin equivalent; * IS50: 50% soluble and 50% insoluble dietary fiber: Pea fiber, acacia gum, fructo-oligosaccharides, inulin.

Nutrients

FAT:

The fat content consists of nutritionally superior vegetable oils (canola and sunflower oils), medium chain triglycerides (MCT) and fish oil.

	in % of total fat	g / 100 ml
Saturated fatty acids, of which	35	1.2
– MCT	21	0.70
Monounsaturated fatty acids	44	1.5
Polyunsaturated fatty acids, of which	21	0.70
– Omega-3 fatty acids	4	0.15
Ratio omega-6 : omega-3	3.6 : 1	

CARBON HYDRATES:

The main ingredient is **maltodextrin**.

	in % of total carbohydrates	g / 100 ml
Oligo- and polysaccharides	91	12.3
Sugars (mono- and disaccharides)	9	1.2
Lactose	–	< 0.05

DIETARY FIBERS:

Patented dietary fiber mix IS50 with 50% soluble and 50% insoluble dietary fibers.

	in % of total fat	g / 100 ml
Soluble	50	0.75
Insoluble	50	0.75

PROTEIN:

The protein component in Isosource® Standard Fibre consists of high-quality milk protein (caseinate).

MINERALS AND VITAMINS:

The daily requirement of micronutrients (vitamins and minerals) is covered from 1,500 kcal.