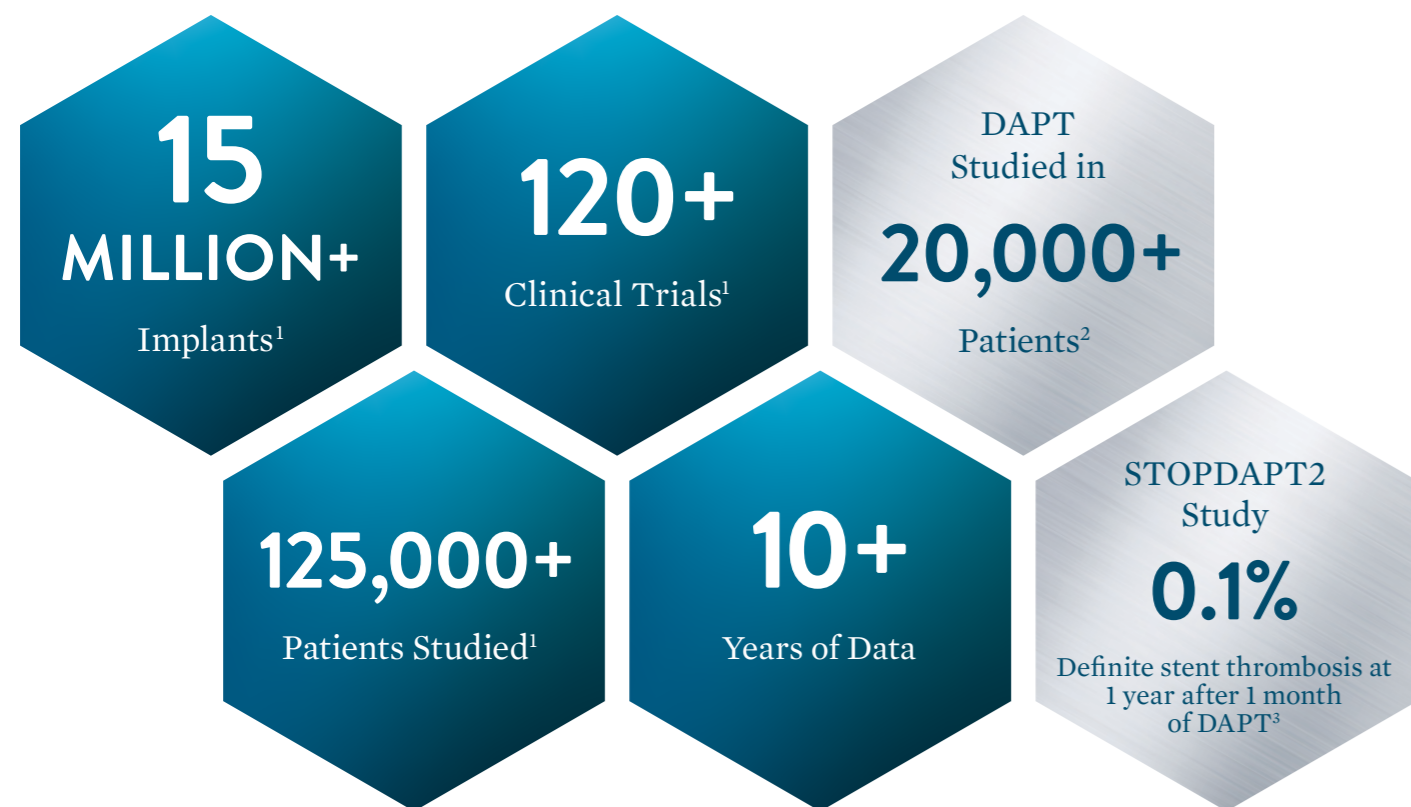


XIENCE™ STENT: MOST STUDIED,
MOST IMPLANTED STENT IN THE WORLD



1. 15,000,000 implants number is based on data of DES implants through Q1 2020. Data on file at Abbott.
 2. Généreux P, et al. *Circ Cardiovasc Interv.* 2015;8(5):1-16; Natsuaki et al., *Cardiovasc Interv and Ther.* 2016. 31:196-209; Watanabe H, et al. *JAMA.* 2019;321(24):2414-2427; Hahn J, et al. ACC 2019 - SMART CHOICE; Valgimigli M, et al. *Circulation.* 2012;125:2015-2026; Gilard M, et al. *J Am Coll Cardiol* 2015;65:777-786; Hong SJ, et al. *J Am Coll Cardiol Intv.* 2016;9:1438-1446. Gwon HC, et al. ACC 2011 - EXCELLENT.
 3. Watanabe H, et al. *JAMA.* 2019;321(24):2414-2427 - STOPDAPT 2.

ORDERING INFORMATION

STENT DIAMETER	LENGTH								POST-DILATATION LIMIT
	8 mm	12 mm	15 mm	18 mm	23 mm	28 mm	33 mm	38 mm	
2.0 mm	1508200-08	1508200-12	1508200-15	1508200-18	1508200-23	1508200-28	1508200-33	1508200-38	3.75 mm
2.25 mm	1508225-08	1508225-12	1508225-15	1508225-18	1508225-23	1508225-28	1508225-33	1508225-38	3.75 mm
2.5 mm	1508250-08	1508250-12	1508250-15	1508250-18	1508250-23	1508250-28	1508250-33	1508250-38	3.75 mm
2.75 mm	1508275-08	1508275-12	1508275-15	1508275-18	1508275-23	1508275-28	1508275-33	1508275-38	3.75 mm
3.0 mm	1508300-08	1508300-12	1508300-15	1508300-18	1508300-23	1508300-28	1508300-33	1508300-38	3.75 mm
3.25 mm	1508325-08	1508325-12	1508325-15	1508325-18	1508325-23	1508325-28	1508325-33	1508325-38	3.75 mm
3.5 mm	1508350-08	1508350-12	1508350-15	1508350-18	1508350-23	1508350-28	1508350-33	1508350-38	5.5 mm
4.0 mm	1508400-08	1508400-12	1508400-15	1508400-18	1508400-23	1508400-28	1508400-33	1508400-38	5.5 mm

STENT SPECIFICATIONS		DELIVERY SYSTEM SPECIFICATIONS	
Stent Design	MULTI-LINK, 3-3-3, Peak-to-Valley Design	Nominal Pressure	9 atm for 2.25-2.5 mm; 12 atm for 2.75-4.0 mm
Stent Material	L-605 Cobalt Chromium	Rated Burst Pressure	16 atm for All Diameters
Drug	Everolimus	Shaft Measurements	Proximal 2.1F/0.71 mm Distal 2.7F/0.89 mm
Drug Dose	1 µg/mm²	Min. GC/Sheath Diameter	5F/0.056"/1.42 mm
Polymer	Fluorinated Copolymer	Balloon Material	Pebax[†] 72D
Strut Thickness	0.0032" (81 µm)	Crossing Profile	0.039" (3.0 x 18 mm)
MRI Compatibility	MR Conditional (see IFU for specific conditions)	Tip Entry Profile	0.017" (3.0 x 18 mm)
Shortening	0% (maximum expansion)¹	Working Catheter Length	145 cm
Post-Dilatation Limit	Sizes 2.25-3.25 mm Post-Dil Limit 3.75 mm 3.5-4.0 mm 5.5 mm		

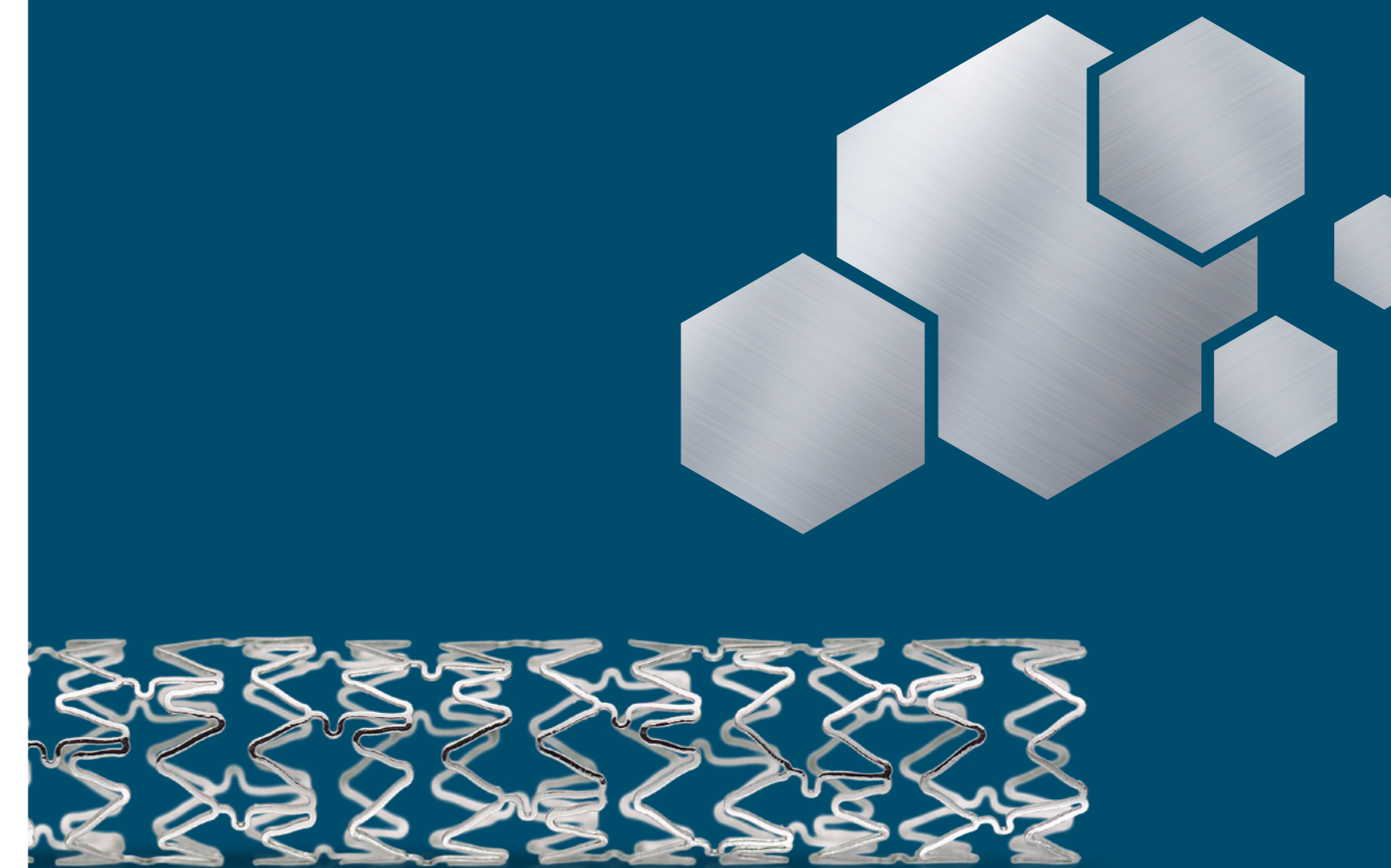
1. Test(s) performed by and data on file at Abbott
 CAUTION: This product is intended for use by or under the direction of a physician. Prior to use, reference the Instructions for Use, inside the product carton (when available) or at www.vascular.eifu.abbott or at medical.abbott/manuals for more detailed information on Indications, Contraindications, Warnings, Precautions and Adverse Events.

Information contained herein for DISTRIBUTION outside the U.S. only. Check the regulatory status of the device in areas where CE marking is not the regulation in force.

Illustrations are artist's representations only and should not be considered as engineering drawings or photographs. Photos on file at Abbott.

Abbott International BVBA
 Park Lane, Culliganlaan 2B, 1831 Diegem, Belgium, Tel: 32.2.714.14.11

™ Indicates a trademark of the Abbott Group of Companies.
 † Indicates a third-party trademark, which is property of its respective owner.
www.cardiovascular.abbott
 ©2020 Abbott. All rights reserved. MAT-2010444 v1.0



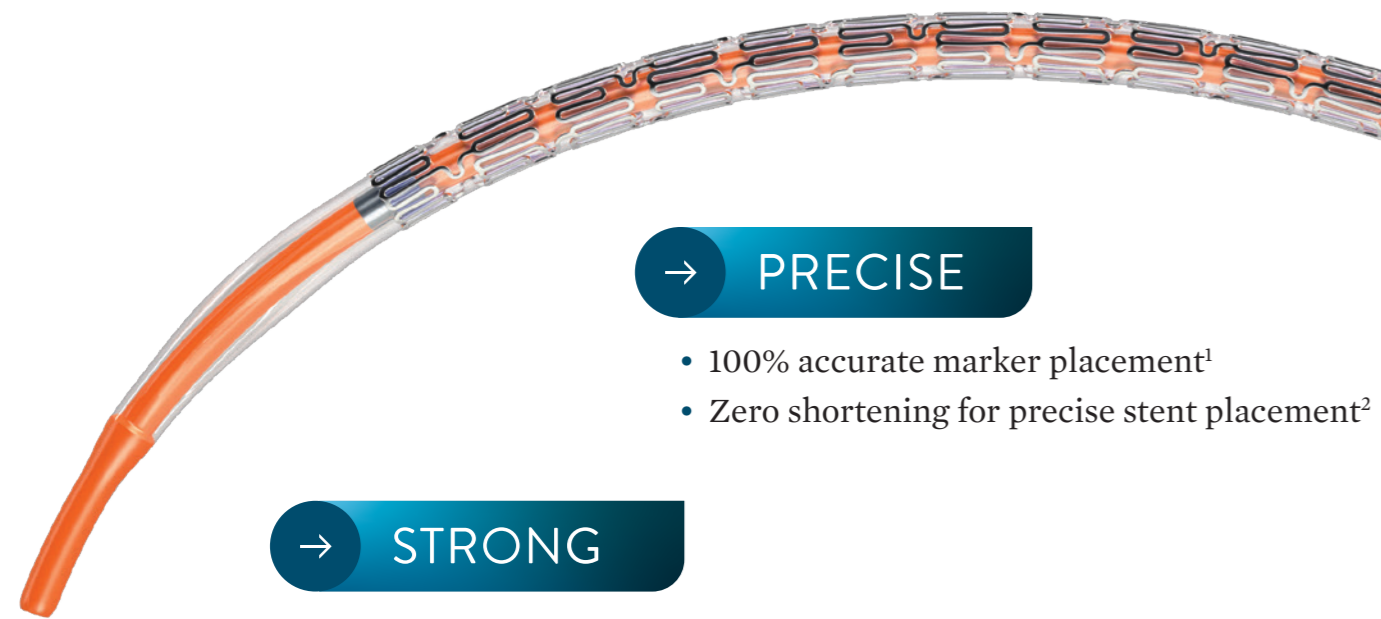
Redefining deliverability in complex lesions

Information contained herein for DISTRIBUTION outside of the U.S. only. Check the regulatory status of the device in areas where CE marking is not the regulation in force.

©2020 Abbott. All rights reserved. MAT-2010444 v1.0



XIENCE PRO™ S STENT DESIGN



→ PRECISE

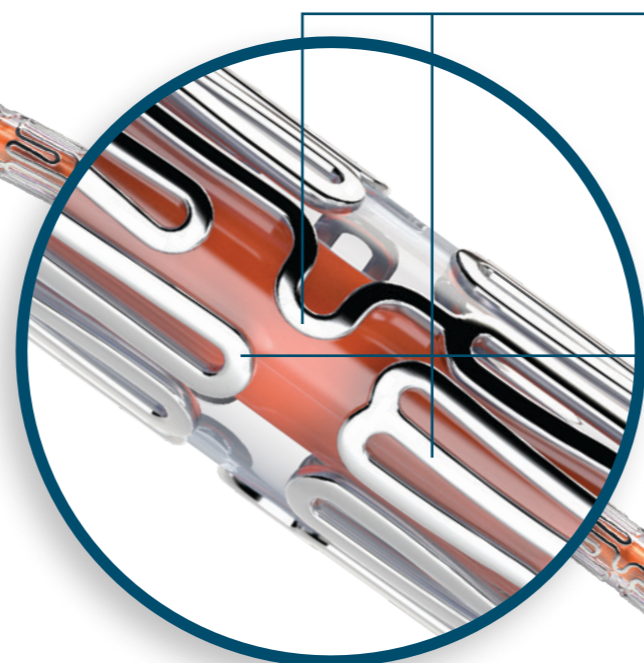
- 100% accurate marker placement¹
- Zero shortening for precise stent placement²

→ STRONG

- Great longitudinal strength¹
- Outstanding stent retention¹
- Robust radial strength¹

→ SLIM

- Ultra low crossing profile³



SLIM FLEX TECHNOLOGY

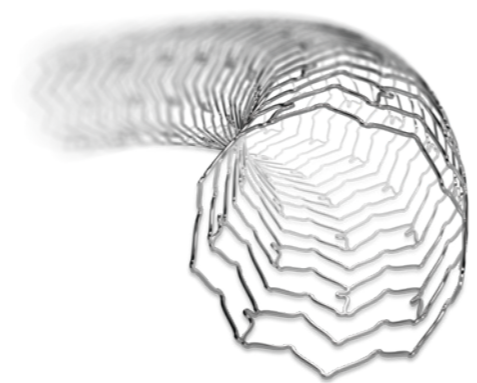
Includes tight crests and smooth links that allow tighter crimping for low crossing profile¹

ELONGATED BAR ARMS

Deliver up to 5.5 mm maximum expansion in 3.5 mm and 4.0 mm diameter sizes¹

STENT DELIVERY SYSTEM FOR COMPLEX CASES

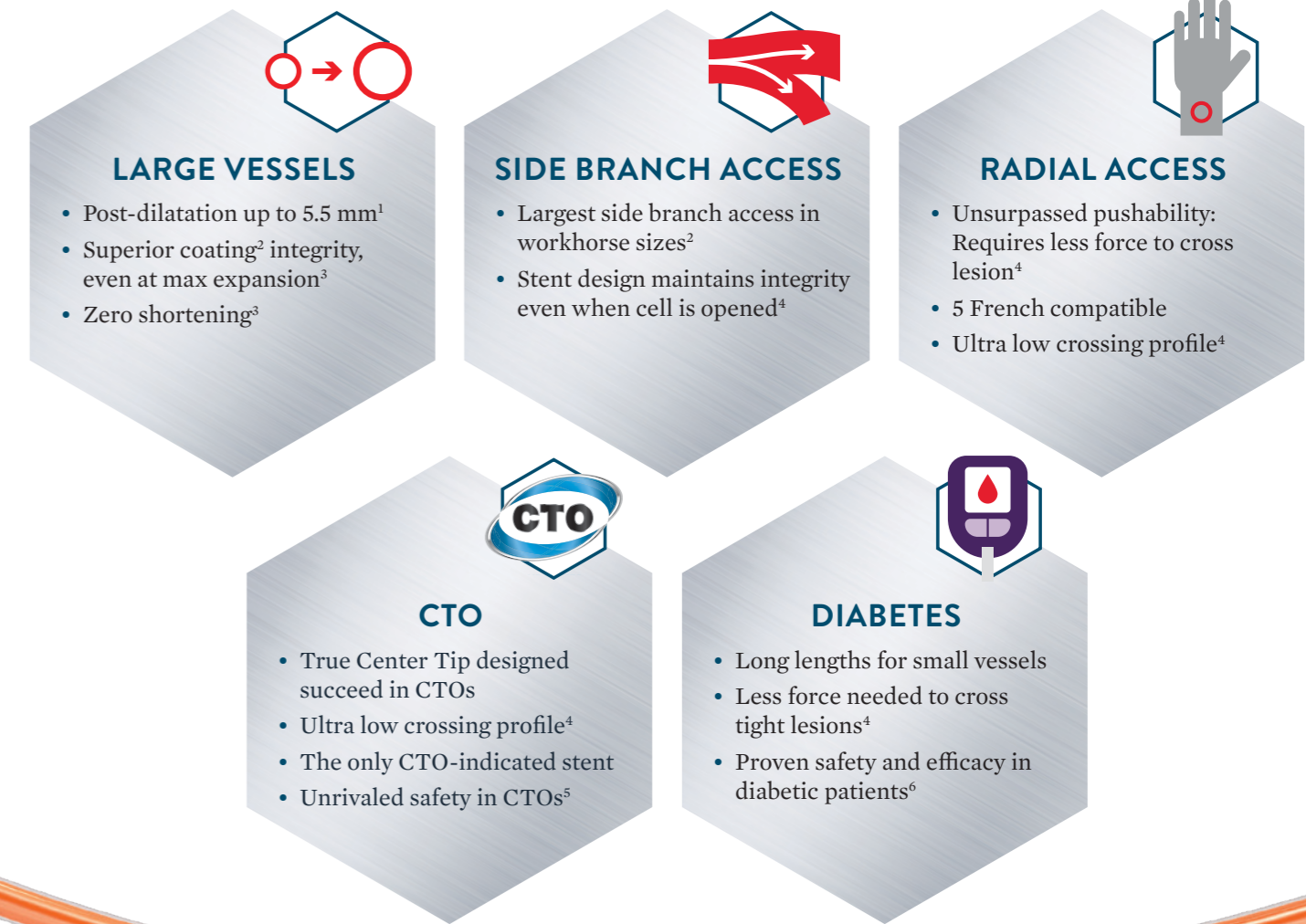
Design innovations built to provide the flexibility, crossability, and pushability needed for even the most complex cases



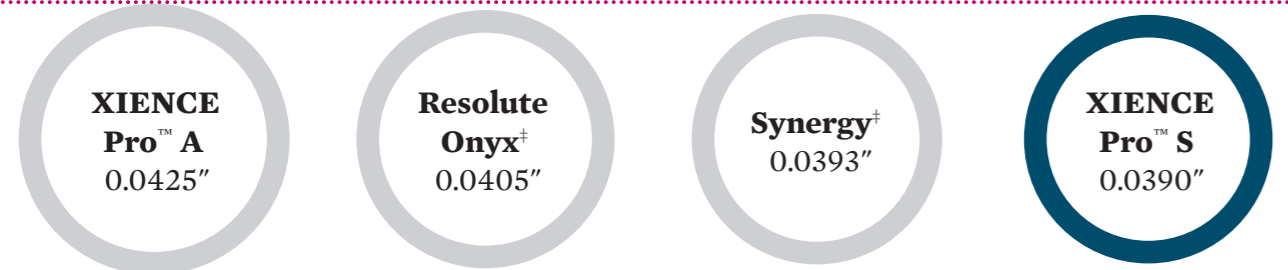
→ MAXIMAL EXPANSION¹

Up to **5.5 mm** in large sizes

SPECIFICALLY DESIGNED FOR THE TREATMENT OF EVEN COMPLEX PATIENTS



ULTRA LOW CROSSING PROFILE³



1. Data on file at Abbott.
2. Test(s) performed by and data on file at Abbott. Refers to 4.0 mm diameter size expanded to 5.5 mm.
3. Test(s) performed by and data on file at Abbott. 3.0 mm diameter size tested, compared to XIENCE Pro A, Synergy, Resolute Onyx.

1. Test(s) performed by and data on file at Abbott.

1. Test(s) performed by and data on file at Abbott. 5.5 mm maximum expansion in 3.5 and 4.0 diameter sizes.
2. Test(s) performed by and data on file at Abbott.
3. Test(s) performed by and data on file at Abbott. Refers to 4.0 mm diameter size expanded to 5.5 mm.
4. Test(s) performed by and data on file at Abbott. 3.0 mm diameter size tested, compared to XIENCE Pro A, Synergy, Resolute Onyx.
5. EXPERT CTO Trial data demonstrated 1% definite stent thrombosis and 6.3% TLR at 1 year. Kandzari D, et al. "Safety and Effectiveness of Everolimus-Eluting Stents in Chronic Total Coronary Occlusion Revascularization." JACC 2015.
6. TUXEDO 2-Year Data, Upendra Kaul, TCT 2016.