

# Technical-Data-Sheet

---

## CTS 630A

### T-shaped separable connector

for polymeric cables for outer cone system terminals type C

Cellplux screwable T-shaped separable connectors CTS are suitable for connecting all polymeric-insulated 1-core cables (PVC, PE, XLPE, EPR), with different types of semi-conductive layers (graphite-coated or strippable) and screen design (wire or tape screen) to switching equipment and transformers having an outer cone system type C, up to maximum network voltage of 36 kV in accordance with EN 50180 and EN 50181.



### Product description

Article name	CTS 630A 24kV 95-240
Material number	355433
Characteristics	With capacitive measuring point
	Individually tested
	Outer semi-conductive layer made of semi-conductive EPDM provides protection from exposed electrical parts
	Cable sheath insulation fault test may be performed while under voltage
	For both copper and aluminium conductors
	Quick, safe and easy assembly
	Suitable for a wide range of applications due to integrated screw cable lug

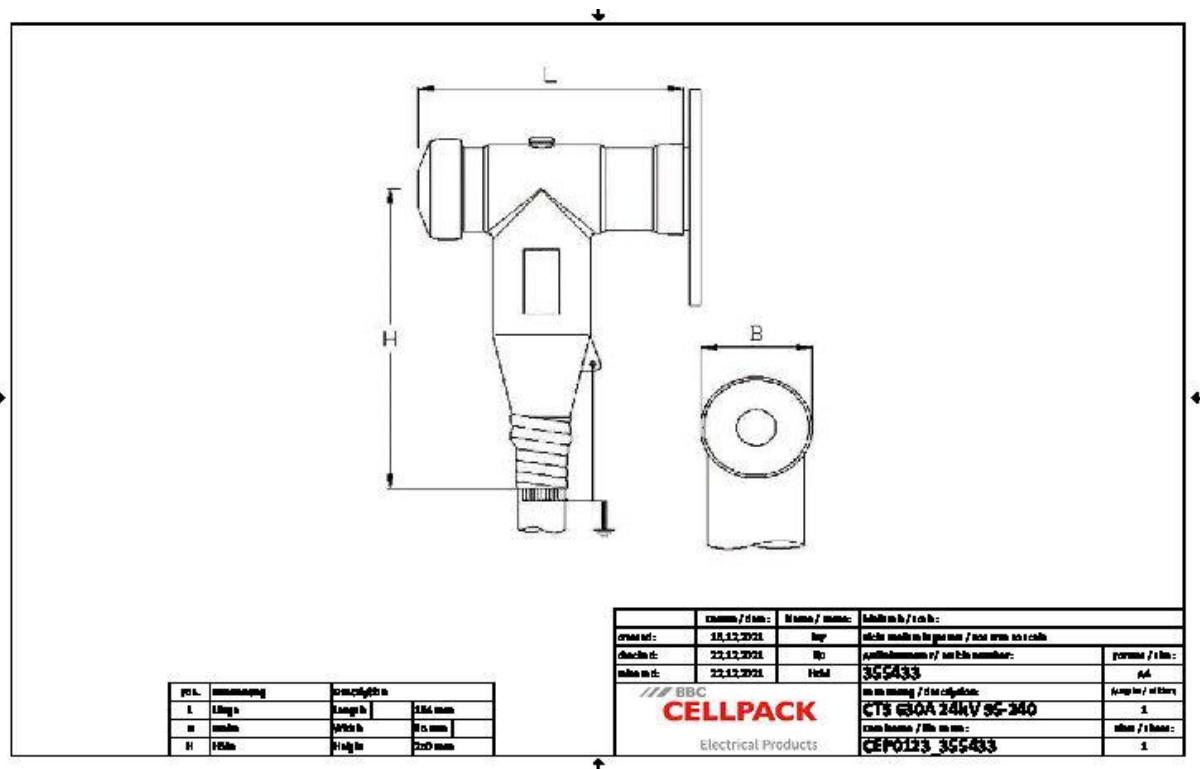
# Technical-Data-Sheet

---

Applications	Indoor
	Outdoor
Family notes	Separable connectors for alternative cross-sections and for class 5 conductors on request
Optional accessory	EGA earthing kit for cables with tape screen (see Connecting technology)

# Technical-Data-Sheet

## Technical data



Voltage levels	U0/U (Um) 6/10 (12) kV - 12,7/22 (24) kV
Test standards	CENELEC HD 629.1
Length L	194 mm
Width B	85 mm
Height H	250 mm
Diameter over core insulation after removal of the outer conductive layer min	22 mm
Nominal cross section 12 kV min	150 mm <sup>2</sup>
Nominal cross section 12 kV max	240 mm <sup>2</sup>
Nominal cross section 17,5 kV min	120 mm <sup>2</sup>
Nominal cross section 17,5 kV max	240 mm <sup>2</sup>
Nominal cross section 24 kV min	95 mm <sup>2</sup>
Nominal cross section 24 kV max	240 mm <sup>2</sup>

# Technical-Data-Sheet

---

## Logistics data

Delivery scope	Set of 3 separable connectors
	Silicone field control elemens
	Earthing set
	Assembly material
	Screw cable lugs for main conductor
	Assembly instructions
Shelf life description	Unlimited shelf life
Country of origin	Germany
Customs tariff number	85479000

EAN-UPC	4010311171883			
Base quantity	1	1	32	
Base unit of measure	Piece	Piece	Piece	
Alternate quantity	1	1	1	
Alternative unit of measure	Piece	Carton	Pal. OW	
Lenght	376	376	1200	
Width	287	287	800	
Height	235	235	1130	
Dimension unit	Millimetres	Millimetres	Millimetres	
Volume	25.359	25.359	1084.8	
Volume unit	Cubic decimetres	Cubic decimetres	Cubic decimetres	
Gross weight	6.201	6.201	216.632	
Net weight	6.201	6.201	198.432	
Weight unit	Kilogram	Kilogram	Kilogram	