

STERILIZATION LINE

Touchable Technology



CELEBRATE 20 YEARS



Runyes Medical Instrument Co.,Ltd.

Add:No. 456, Tonghui Road, Jiangbei Investment & Pioneering Park C, Ningbo,China
Tel:+86-574-27709922 Fax:+86-574-27709923
Http://en.runyes.com E-mail:runyes@runyes.com

Perfect your Clinic!

Runyes®
FOCUS ON DENTAL

➞ Sterilizer (SEA Autoclave Sterilizer)

Since year 2000, Runyes has supplied 170,000 units of sterilizers to hospitals and clinics in over 99 countries.
Your choice,our promise!



➞ Touch Screen

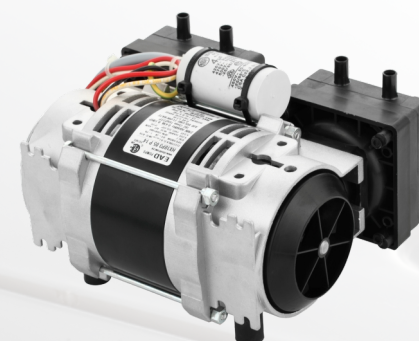
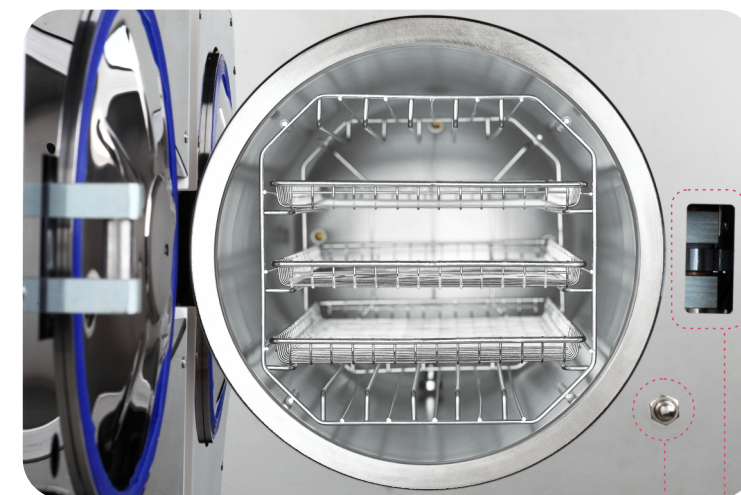
- 1) Touchable screen makes it easy for operation.
- 2) User- friendly operation interface with elegant design.



➞ Six layers' new structure chamber, powerful door-lock system

Six layers' new structure chamber, creating new chamber structure

- 1) Six layers' new structure chamber, creating new chamber structure. The chamber adopts six layers' structure, using the special shaping finish drawing technology, dusting and polishing. It has superstrong pressure-bearing properties, and pass 60000 times fatigue life testing, the outer layer adopts the superfine micropore foaming technique.
- 2) As the tray rack can rotates to 90 degrees , 5 trays can be used for placing instruments.



Imported Spanish Vacuum Pump

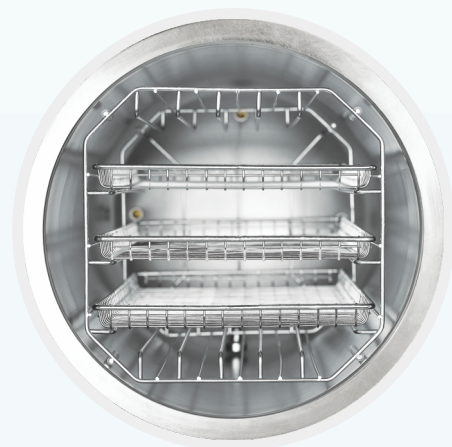
Low noise
Sufficient vacuum
Long life time



Double Lock System – Mechanical Lock with Air Lock System

Double lock system makes the autoclave safer, and prevents potential safety hazards caused by incorrect operation during the sterilizing cycle





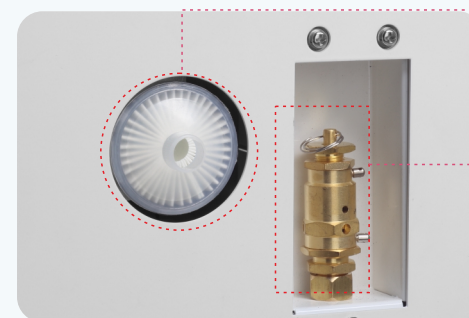
New Arrival! SEA45L 45L Autoclave of 230V

This is a high-capacity autoclave which only need 230V(civil electricity).



Circuit Breaker

Cuts off the external power supply during device malfunction to prevent fire.



Safety Valve

Releases pressure overload, and restores idle chamber pressure when the chamber is over-pressured.

Air Filter

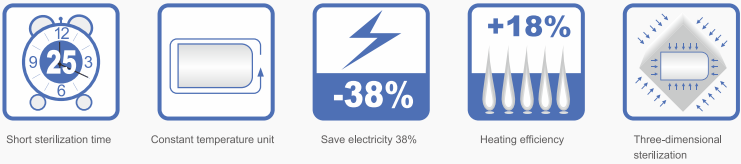
Filters airborne impurities into the chamber to prevent contamination.



Two Condensers

Faster cooling; prolongs life time.

➞ SEA23L/18L Sterilizer



➞ Two types of record (Dual Recording)

- 1) USB
Master controller stores 2,000 fresh cycles; the data can be downloaded via USB. You can check and print all the records with a computer.
- 2) Micro-Printer(Optional) Prints cycle data when the cycle ends.



➞ Big Capacity Open Tank

- 1) Open tank, easy-to-clean.
- 2) Built-in water quality sensor monitors water quality, reduces machine failure rate, and prolongs machine life time.



➞ Suitable for Different Types Instruments

Surgical instruments, dental instruments, glass wares, injection units and other objects of compression resistance and hot steam resistance.





SEA-18L-D

Model	Voltage	Power	Capacity	Chamber Size	Product Size	Weight
	V/Hz	W	L	mm	mm	N.W(Kgs)
SEA18	230/50	1800	18	Ø 249X355	594X468X453	47



SEA-23L-D

Model	Voltage	Power	Capacity	Chamber Size	Product Size	Weight
	V/Hz	W	L	mm	mm	N.W(Kgs)
SEA23	230/50	1800	23	Ø249X450	594X468X453	50



SEA-29L-D

Model	Voltage	Power	Capacity	Chamber Size	Product Size	Weight
	V/Hz	W	L	mm	mm	N.W(Kgs)
SEA29	230/50	2500	29	Ø 319X420	535X650X505	80



SEA-45L-D

Model	Voltage	Power	Capacity	Chamber Size	Product Size	Weight
	V/Hz	W	L	mm	mm	N.W(Kgs)
SEA45	230/50	3300	45	Ø 319X620	535X850X505	92



SEA-16L-N-LED

Model	Voltage	Power	Capacity	Chamber Size	Product Size	Weight
	V/Hz	W	L	mm	mm	N.W(Kgs)
SEA16-N-LED	230/50	1800	16	Ø 230X370	435X532X390	26

➞ Technical Specifications



SEA-23L-B-LCD/SEA-18L-B-LCD

Model	Voltage	Power	Capacity	Chamber Size	Product Size	Weight
	V/Hz	W	L	mm	mm	N.W(Kgs)
SEA23-B-LCD	230/50	1800	23	Ø 249X450	594X468X453	50
SEA18-B-LCD	230/50	1800	18	Ø 249X355	594X468X453	47



SEA-23L/18L-B-LED (Printer)

Model	Voltage	Power	Capacity	Chamber Size	Product Size	Weight
	V/Hz	W	L	mm	mm	N.W(Kgs)
SEA23-B-LED	230/50	1800	23	Ø 249X450	594X468X453	50
SEA18-B-LED	230/50	1800	18	Ø 249X355	594X468X453	47



SEA-23L-B-LED/SEA-18L-B-LED

Model	Voltage	Power	Capacity	Chamber Size	Product Size	Weight
	V/Hz	W	L	mm	mm	N.W(Kgs)
SEA23-B-LED	230/50	1800	23	Ø 249X450	594X468X453	50
SEA18-B-LED	230/50	1800	18	Ø 249X355	594X468X453	47



SEA-23L-N-LED / SEA-18L-N-LED

Model	Voltage	Power	Capacity	Chamber Size	Product Size	Weight
	V/Hz	W	L	mm	mm	N.W(Kgs)
SEA23-N-LED	230/50	1800	23	Ø 249X450	580X460X450	33
SEA18-N-LED	230/50	1800	18	Ø 249X450	580X460X450	30



SEA-12L-B-LED

Model	Voltage	Power	Capacity	Chamber Size	Product Size	Weight
	V/Hz	W	L	mm	mm	N.W(Kgs)
SEA12-B-LED	230/50	1800	12	Ø 200X360	560X439X369	42

➞ **Accessory Devices —Technical Specifications**



Water Distiller—Drink

Power supply: 110V/230V, 50Hz
Output water: 1L/H
Net weight: 4.2Kg
Chamber dimension: 180X200mm
Machine dimension: 260X220X380mm



Lubrication Device —LUB90(B)

Power supply: 110V/230V, 50Hz
Air consumption: 60L/Min
Power air sources: 0.3-0.6Mpa
Connectors for handpiece: high speed *2
Low speed *1
Net weight: 7.2Kg
Product dimension: 280X300X370mm

Ultrasonic Cleaner—CLEAN01

Basin size: 250X174X78mm
Product size: 455X275X210mm
Basin capacity: 3L
Maximum length allowed: 266mm
Digital timer: 6 phases timer
Temperature setting: 3 groups temperature option
Ultrasonic frequency: 35000Hz
Voltage and power: 170W (AC 230~240V 50Hz)
Product net weight: 5.1Kg



Ultrasonic Cleaner—CLEAN02

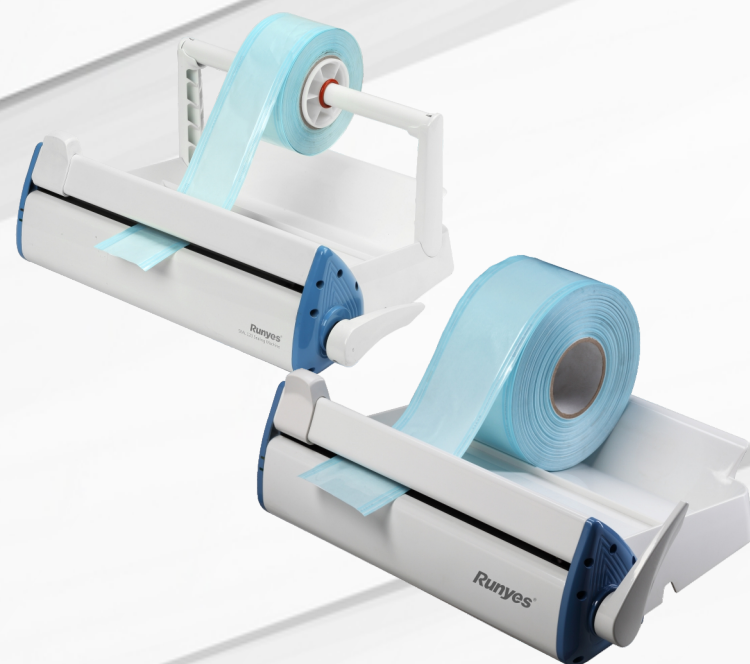
Basin size: 323X205X99mm
Product size: 515X305X240mm
Basin capacity: 6L
Maximum length allowed: 340mm
Digital timer: 6 phases timer
Temperature setting: 3 groups temperature option
Ultrasonic frequency: 35000Hz
Voltage and power: 300W (AC 230~240V 50Hz)
Product net weight: 7.5Kg



Ultrasonic Cleaner—CLEAN03

Basin size: 331X238X105mm
Product size: 541X337X277mm
Basin capacity: 7.5L
Maximum length allowed: 370mm
Digital timer: 6 phases timer
Temperature setting: 3 groups temperature option
Ultrasonic frequency: 35000Hz
Voltage and power: 410W (AC 230~240V 50Hz)
Product net weight: 9.8Kg

(With Paper Rolling Shelf)



Sealing Machine—SEAL120

Power: 100W
Power supply: 230V, 50~60Hz
Net weight: 7kg(4.8kg)
Sealing temperature: 200°C ± 10°C
Width of indentation: 12mm
Package size: 500X400X250mm
Max width of seal: 300mm