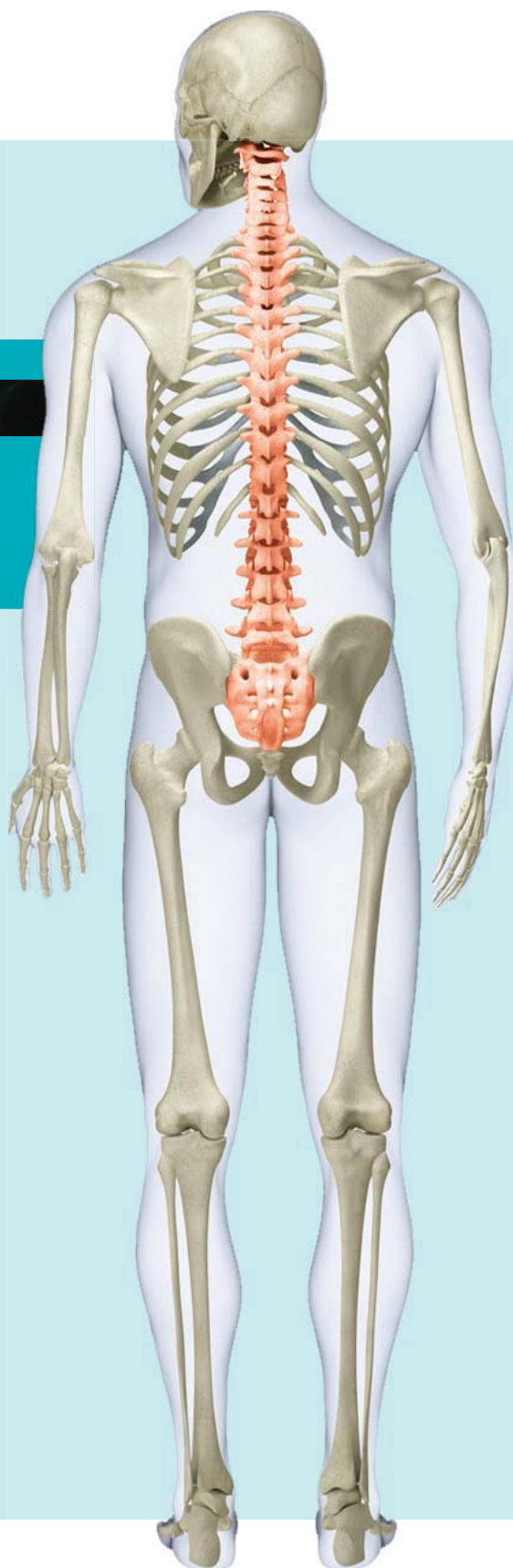
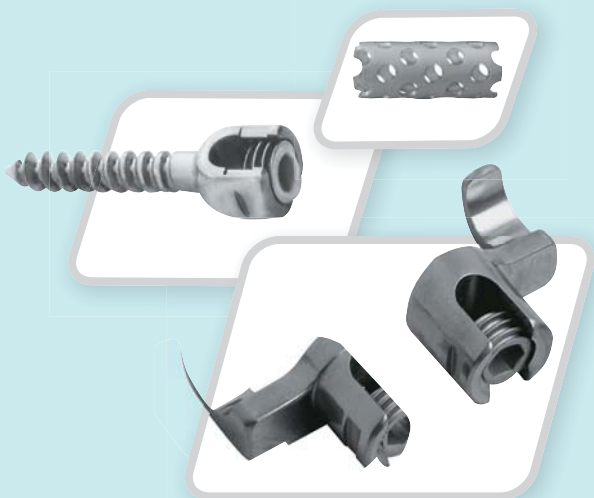


SPINE IMPLANTS & INSTRUMENTS



220
**MINI POLYAXIAL SCREW
(TITANIUM)**

CODE	Ø (mm)	L (mm)
220.35.12.Ti	3.5	12
220.35.14.Ti	3.5	14
220.35.16.Ti	3.5	16
220.35.18.Ti	3.5	18
220.35.20.Ti	3.5	20
220.35.22.Ti	3.5	22
220.40.12.Ti	4.0	12
220.40.14.Ti	4.0	14
220.40.16.Ti	4.0	16
220.40.18.Ti	4.0	18
220.40.20.Ti	4.0	20
220.40.22.Ti	4.0	22



Code No: 220

221
**POLYAXIAL SINGLE LOCK SCREW
(TITANIUM)**

CODE	Ø (mm)	L (mm)
221.45.25.Ti	4.5	25
221.45.30.Ti	4.5	30
221.45.35.Ti	4.5	35
221.45.40.Ti	4.5	40
221.45.45.Ti	4.5	45
221.55.25.Ti	5.5	25
221.55.30.Ti	5.5	30
221.55.35.Ti	5.5	35
221.55.40.Ti	5.5	40
221.55.45.Ti	5.5	45
221.55.50.Ti	5.5	50
221.55.55.Ti	5.5	55
221.65.30.Ti	6.5	30
221.65.35.Ti	6.5	35
221.65.40.Ti	6.5	40
221.65.45.Ti	6.5	45
221.65.50.Ti	6.5	50
221.65.55.Ti	6.5	55



Code No: 221

222
**MONOAXIAL SINGLE LOCK SCREW
(TITANIUM)**

CODE	Ø (mm)	L (mm)
222.45.25.Ti	4.5	25
222.45.30.Ti	4.5	30
222.45.35.Ti	4.5	35
222.45.40.Ti	4.5	40
222.45.45.Ti	4.5	45
222.55.25.Ti	5.5	25
222.55.30.Ti	5.5	30
222.55.35.Ti	5.5	35
222.55.40.Ti	5.5	40
222.55.45.Ti	5.5	45
222.55.50.Ti	5.5	50
222.55.55.Ti	5.5	55
222.65.30.Ti	6.5	30
222.65.35.Ti	6.5	35
222.65.40.Ti	6.5	40
222.65.45.Ti	6.5	45
222.65.50.Ti	6.5	50
222.65.55.Ti	6.5	55



Code No: 222

223
**REDUCTION POLYAXIAL SCREW
(TITANIUM)**

CODE	Ø (mm)	L (mm)
223.45.25.Ti	4.5	25
223.45.30.Ti	4.5	30
223.45.35.Ti	4.5	35
223.45.40.Ti	4.5	40
223.45.45.Ti	4.5	45
223.55.25.Ti	5.5	25
223.55.30.Ti	5.5	30
223.55.35.Ti	5.5	35
223.55.40.Ti	5.5	40
223.55.45.Ti	5.5	45
223.55.50.Ti	5.5	50
223.55.55.Ti	5.5	55
223.65.30.Ti	6.5	30
223.65.35.Ti	6.5	35
223.65.40.Ti	6.5	40
223.65.45.Ti	6.5	45
223.65.50.Ti	6.5	50
223.65.55.Ti	6.5	55



Code No: 223

224.001 SET SCREW (TITANIUM)


Code No: 224.001

226 MULTIAXIAL CROSSLINK (TITANIUM)

CODE	Ø (mm)
226.001.Ti	38-43
226.002.Ti	42-51
226.003.Ti	50-67



Code No: 226

227 ROD Ø6MM (TITANIUM)

CODE	Ø (mm)	PLATE LENGTH (mm)
227.05.Ti	6.5	50
227.06.Ti	6.5	60
227.07.Ti	6.5	70
227.08.Ti	6.5	80
227.09.Ti	6.5	90
227.10.Ti	6.5	100
227.11.Ti	6.5	110

CODE	Ø (mm)	PLATE LENGTH (mm)
227.12.Ti	6.5	120
227.13.Ti	6.5	130
227.14.Ti	6.5	140
227.15.Ti	6.5	150
227.20.Ti	6.5	200
227.25.Ti	6.5	250



Code No: 227

228 CAGE (TITANIUM)

LENGTH (mm)	CODE							
	DIAMETER							
	10mm	12mm	14mm	16mm	18mm	20mm	22mm	24mm
20	228.20.10.Ti	228.20.12.Ti	228.20.14.Ti	228.20.16.Ti	228.20.18.Ti	228.20.20.Ti	228.20.22.Ti	228.20.24.Ti
25	228.25.10.Ti	228.25.12.Ti	228.25.14.Ti	228.25.16.Ti	228.25.18.Ti	228.25.20.Ti	228.25.22.Ti	228.25.24.Ti
30	228.30.10.Ti	228.30.12.Ti	228.30.14.Ti	228.30.16.Ti	228.30.18.Ti	228.30.20.Ti	228.30.22.Ti	228.30.24.Ti
35	228.35.10.Ti	228.35.12.Ti	228.35.14.Ti	228.35.16.Ti	228.35.18.Ti	228.35.20.Ti	228.35.22.Ti	228.35.24.Ti
40	228.40.10.Ti	228.40.12.Ti	228.40.14.Ti	228.40.16.Ti	228.40.18.Ti	228.40.20.Ti	228.40.22.Ti	228.40.24.Ti
45	228.45.10.Ti	228.45.12.Ti	228.45.14.Ti	228.45.16.Ti	228.45.18.Ti	228.45.20.Ti	228.45.22.Ti	228.45.24.Ti
50	228.50.10.Ti	228.50.12.Ti	228.50.14.Ti	228.50.16.Ti	228.50.18.Ti	228.50.20.Ti	228.50.22.Ti	228.50.24.Ti
55	228.55.10.Ti	228.55.12.Ti	228.55.14.Ti	228.55.16.Ti	228.55.18.Ti	228.55.20.Ti	228.55.22.Ti	228.55.24.Ti
60	228.60.10.Ti	228.60.12.Ti	228.60.14.Ti	228.60.16.Ti	228.60.18.Ti	228.60.20.Ti	228.60.22.Ti	228.60.24.Ti
65	228.65.10.Ti	228.65.12.Ti	228.65.14.Ti	228.65.16.Ti	228.65.18.Ti	228.65.20.Ti	228.65.22.Ti	228.65.24.Ti
70	228.70.10.Ti	228.70.12.Ti	228.70.14.Ti	228.70.16.Ti	228.70.18.Ti	228.70.20.Ti	228.70.22.Ti	228.70.24.Ti



Code No: 228

231 OCCIPITAL PLATE


Code No: 231

NEW

232 SCREW FOR OCCIPITAL PLATE


Code No: 232

NEW

Assembled

229 EXPANDABLE CAGE (TITANIUM)

CODE	Ø (mm)	L (mm)
229.14.SM.Ti	14	22 - 37
229.14.MD.Ti	14	37 - 55
229.14.LG.Ti	14	50 - 80
229.16.SM.Ti	16	22 - 37
229.16.MD.Ti	16	37 - 55
229.16.LG.Ti	16	50 - 80
229.18.SM.Ti	18	22 - 37
229.18.MD.Ti	18	37 - 55
229.18.LG.Ti	18	50 - 80
229.20.SM.Ti	20	22 - 37
229.20.MD.Ti	20	37 - 55
229.20.LG.Ti	20	50 - 80


NEW

Code No: 229

230 ANTERIOR CONVERGENT PLATE (TITANIUM)

CODE	PLATE LENGTH (mm)	CODE	PLATE LENGTH (mm)
230.22.Ti	22.5	230.22.Ti	47.5
230.25.Ti	25.0	230.25.Ti	50.0
230.27.Ti	27.5	230.27.Ti	52.5
230.30.Ti	30.0	230.30.Ti	55.0
230.32.Ti	32.5	230.32.Ti	57.5
230.35.Ti	35.0	230.35.Ti	60.0
230.37.Ti	37.5	230.37.Ti	62.5
230.40.Ti	40.0	230.40.Ti	65.0
230.42.Ti	42.5	230.42.Ti	67.5
230.45.Ti	45.0	230.45.Ti	70.0

NEW


Code No: 230

088 ANTERIOR CONVERGENT SCREW (TITANIUM)

CODE	SCREW LENGTH (mm)
088.12.Ti	12
088.14.Ti	14
088.16.Ti	16
088.18.Ti	18
088.20.Ti	20
088.22.Ti	22
088.24.Ti	24


NEW

Code No: 088

089 ANTERIOR TOP SCREW (TITANIUM)


Code No: 089

NEW

Assembled

233 PEDICLE HOOK (TITANIUM)


Code No: 233

234 TRANSVERSE CONNECTOR (TITANIUM)

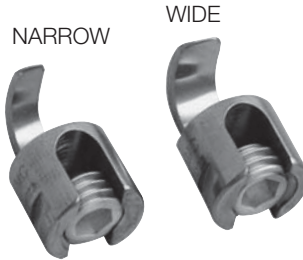
CODE	SIZE
234.001.Ti	SMALL
234.002.Ti	LARGE



Code No: 234

235 LAMINAR HOOK (TITANIUM)

CODE	SIZE
235.001.Ti	NARROW BLADE
235.002.Ti	WIDE BLADE



Code No: 235

236 FALET HOOK (TITANIUM)

CODE	SIZE
236.001.Ti	SMALL
236.002.Ti	LARGE



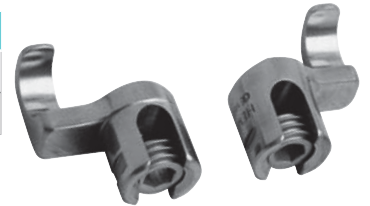
Code No: 236

NEW
237 STAPLE (TITANIUM)


Code No: 237

NEW
238 TRANSVERSE PROCESS HOOK (TITANIUM)

CODE	SIZE
238.001L.Ti	LEFT
238.002R.Ti	RIGHT



Code No: 238

246 CERVICAL CAGE, TITANIUM

CODE	LENGTH (mm)
246.07.Ti	7
246.08.Ti	8
246.09.Ti	9
246.10.Ti	10
246.11.Ti	11
246.12.Ti	12
246.13.Ti	13



Code No: 246

NEW
247 TLIF CAGE

CODE	LENGTH (mm)
247.07.Ti	7
247.08.Ti	8
247.09.Ti	9
247.10.Ti	10
247.11.Ti	11
247.12.Ti	12
247.13.Ti	13



Code No: 247

NEW
248 PLIF CAGE

CODE	LENGTH (mm)
248.07.Ti	7
248.08.Ti	8
248.09.Ti	9
248.10.Ti	10

CODE	LENGTH (mm)
248.11.Ti	11
248.12.Ti	12
248.13.Ti	13



Code No: 248

NEW

IS-03-01 INSTRUMENTS FOR SPINE

Set consists of:

CODE	PRODUCTS	QUANTITY
841.001	Introducer for Mono-Axial Screw	1 Pc
841.002	Introducer for Poly-Axial Screw	1 Pc
841.005	Screw Driver - Introducer for Offset Screw	1 Pc
841.009	Rod Pusher Straight	1 Pc
841.010	Rod Pusher Curved	1 Pc
614.040	Hexagonal Screw Driver, 3.5mm Tip, Extra Large	1 Pc
602.195.40	Drill Bit, Plain Shank, S.S 4.0 x 195mm (Ø x L)	1 Pc
602.195.50	Drill Bit, Plain Shank, S.S 5.0 x 195mm (Ø x L)	1 Pc
602.195.60	Drill Bit, Plain Shank, S.S 6.0 x 195mm (Ø x L)	1 Pc
611.045	Bone Tap for Mono & Poly Axial Screw Ø 4.5mm	1 Pc
611.055	Bone Tap for Mono & Poly Axial Screw Ø 5.5mm	1 Pc
611.065	Bone Tap for Mono & Poly Axial Screw Ø 6.5mm	1 Pc
841.022	Pedicle Elevator	1 Pc
841.023	Pedicle Probe	1 Pc
841.025	Pedicle Sound	1 Pc
841.033	Rod Holder with Ratchet Lock	1 Pc
841.035	In-Situ Iron Bender (Pair)	1 Pc
841.040	Outer Sleeve for Poly-Axial Screw Insertter with 'T' Handle	1 Pc
841.044	Rod Stabiliser	1 Pc
841.047	Compressor	1 Pc
841.049	Parallel Compressor	1 Pc
811.020	Awl with Stopper	1 Pc
<i>Optional Instruments:</i>		
841.015	Capner Gouge	1 Pc
841.018	Hook Pusher	1 Pc
841.020	Introducer for Hooks	1 Pc
841.028	Laminar Elevator Wide	1 Pc
841.030	Laminar Elevator Narrow	1 Pc
841.055	Rod Clamp, Long	1 Pc
665.002	Hit Cutter 45cm (18")	1 Pc
<i>Supplied in a Sterilize Box</i>		



Code No: IS-03-01

IS-03-01 INSTRUMENTS FOR SPINE (CONTD....)
**INTRODUCER FOR MONO
- AXIAL SCREW**


Code No: 841.001

**INTRODUCER FOR POLY
- AXIAL SCREW**


Code No: 841.002

ROD PUSHER STRAIGHT


Code No: 841.009

ROD PUSHER CURVED


Code No: 841.010

**SCREW DRIVER – INTRODUCER
FOR OFFSET SCREW**


Code No: 841.005

**HEXAGONAL SCREW DRIVER,
3.5mm TIP, EXTRA LARGE**


Code No: 614.040

DRILL BIT, PLAIN SHANK, S.S

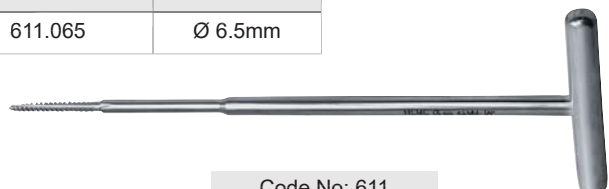
CODE	SIZE(Ø×L)
602.195.40	4.0 × 195mm
602.195.50	5.0 × 195mm
602.195.60	6.0 × 195mm



Code No: 602.195

BONE TAP FOR MONO & POLY AXIAL SCREW

CODE	SIZE
611.045	Ø 4.5mm
611.055	Ø 5.5mm
611.065	Ø 6.5mm



Code No: 611

IS-03-01 INSTRUMENTS FOR SPINE (CONTD....)**PEDICLE ELEVATOR**

Code No: 841.022

PEDICLE PROBE

Code No: 841.023

PEDICLE SOUND

Code No: 841.025

ROD HOLDER WITH RACHET LOCK

Code No: 841.033

IN-SITU IRON BENDER (PAIR)

Code No: 841.035

OUTER SLEEVE FOR POLY-AXIAL SCREW INSERTER WITH 'T' HANDLE

Code No: 841.040

IS-03-01 INSTRUMENTS FOR SPINE (CONTD....)
ROD STABILISER


Code No: 841.044

COMPRESSOR


Code No: 841.047

PARALLEL COMPRESSOR


Code No: 841.049

AWL WITH STOPPER


Code No: 811.020

OPTIONAL INSTRUMENTS
CAPNER GOUGE


Code No: 841.015

HOOK PUSHER


Code No: 841.018

INTRODUCER FOR HOOKS


Code No: 841.020

LAMINAR ELEVATOR WIDE


Code No: 841.028

OPTIONAL INSTRUMENTS (CONTD....)
LAMINAR ELEVATOR NARROW


Code No: 841.030

ROD CLAMP, LONG


Code No: 841.055

CUTTER 45CM (18")


Code No: 665.002

249 ROY CAMILLE PLATE

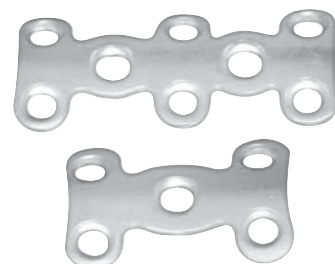
NO. OF HOLES	CODE
6	249.006
7	249.007
8	249.008
9	249.009
10	249.010
11	249.011
12	249.012
13	249.013
14	249.014



Code No: 249

250 H-PLATE FOR CERVICAL SPINE

NO. OF HOLES	LENGTH (mm)	CODE	
		STAINLESS	TITANIUM
5	23	250.005.23	250.005.23Ti
5	25	250.005.25	250.005.25Ti
5	28	250.005.28	250.005.28Ti
8	41	250.008.41	250.008.41Ti
8	46	250.008.46	250.008.46Ti
11	58	250.011.58	250.011.58Ti



Code No: 250

IS-03-02
INSTRUMENTS FOR LAMINECTOMY

Set consists of:

CODE	PRODUCTS	QUANTITY
741.107	McDonald's Retractor	1 Pc
704.033	Cobb's Elevator	1 Pc
704.053	Durer Elevator	1 Pc
741.147	Self Retaining Retractor with Hinge	1 Pc
737.001	Spinal Ronger	1 Pc
740.021	Bone Scoop with Fibre Handle	1 Pc
741.090	Love Nerve Retractor, 45° Angle	1 Pc
741.091	Love Nerve Retractor, Right Angle	1 Pc
741.092	Love Nerve Retractor, Straight	1 Pc
747.002	Punch Forceps, Up-cutting, 3.0mm	1 Pc
748.003	Punch Forceps, Down-cutting, 4.0mm	1 Pc
749.002	Punch Forceps, 45° Angle, Up-cutting 2.0mm	1 Pc
750.003	Punch Forceps, 45° Angle, Down-cutting 3.0mm	1 Pc
746.001	Disc Forceps, Straight	1 Pc
746.002	Disc Forceps, Upward	1 Pc
746.003	Disc Forceps, Downward	1 Pc
<i>Supplied in a Sterilize Box</i>		

McDONALD'S RETRACTOR


Code No: 741.107

COBB'S ELEVATOR


Code No: 704.033

DURER ELEVATOR


Code No: 704.053

SELF RETAINING RETRACTOR WITH HINGE


Code No: 741.147

SPINAL ROUNGER


Code No: 737.001

BONE SCOOP WITH FIBRE HANDLE


Code No: 740.021

IS-03-02 INSTRUMENTS FOR LAMINECTOMY (CONTD....)
**LOVE NERVE RETRACTOR,
45° ANGLE**


Code No: 741.090

**LOVE NERVE
RETRACTOR,
RIGHT ANGLE**


Code No: 741.091

**LOVE NERVE RETRACTOR,
STRAIGHT**


Code No: 741.092

PUNCH FORCEPS, UP-CUTTING

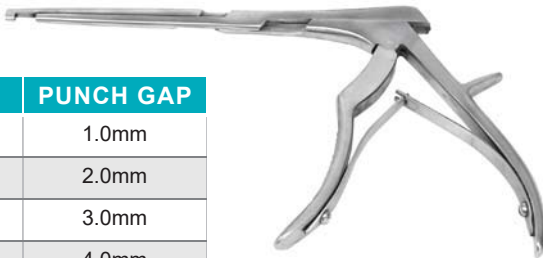
CODE	PUNCH GAP
747.001	1.0mm
747.002	2.0mm
747.003	3.0mm
747.004	4.0mm
747.005	5.0mm



Code No: 747

PUNCH FORCEPS, DOWN-CUTTING

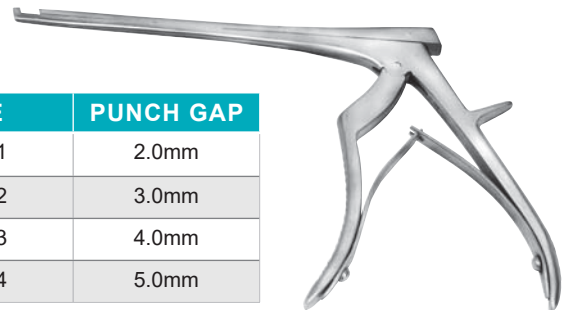
CODE	PUNCH GAP
748.001	1.0mm
748.002	2.0mm
748.003	3.0mm
748.004	4.0mm
748.005	5.0mm



Code No: 748

**PUNCH FORCEPS, 45° ANGLE,
UP-CUTTING**

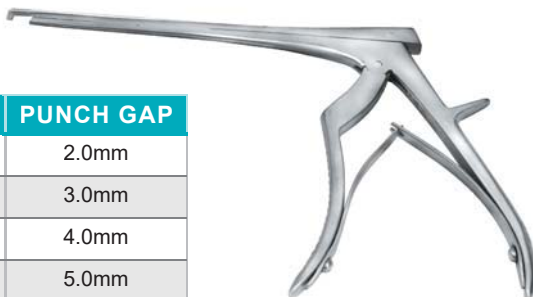
CODE	PUNCH GAP
749.001	2.0mm
749.002	3.0mm
749.003	4.0mm
749.004	5.0mm



Code No: 749

**PUNCH FORCEPS, 45° ANGLE,
DOWN-CUTTING**

CODE	PUNCH GAP
750.001	2.0mm
750.002	3.0mm
750.003	4.0mm
750.004	5.0mm



Code No: 750

DISC FORCEPS, STRAIGHT


Code No: 746.001

IS-03-02 INSTRUMENTS FOR LAMINECTOMY (CONTD....)
DISC FORCEPS, UPWARD


Code No: 746.002

DISC FORCEPS, DOWNWARD


Code No: 746.003

IS-03-03C INSTRUMENTS FOR SPINE, PREMIUM
NEW

Set consists of:

CODE	PRODUCTS	QUANTITY
757.01C	Rod Pusher Forceps	1 Pc
757.02C	Rod-Holder	1 Pc
757.03C	Feeler, Straight 757.004C Feeler, Curved	1 Pc
757.05C	Nut Holder	1 Pc
757.06C	Taps Length 235mm	1 Pc
757.07C	Rod Bender L & R	1 Pc
757.08C	Rod Pusher	1 Pc
757.09C	Polyaxial Screw Driver	1 Pc
757.10C	Monoaxial Screw Driver	1 Pc
757.11C	Trail Rod	1 Pc
757.12C	Counter Torque	1 Pc
757.13C	Counter Torque Reduction Screw Break Off	1 Pc
757.14C	Quick Coupling T-Handle	1 Pc
757.15C	Quick Coupling Handle, Straight	1 Pc
757.16C	Pin Insertor	1 Pc
757.17C	Nut Screw Driver	1 Pc
757.18C	Torque Limited Screw Driver	1 Pc
757.19C	Pedicle Awl	1 Pc
757.20C	Distractor	1 Pc
757.21C	Rod Gripper	1 Pc
757.22C	Persuader	1 Pc
757.23C	Compressor	1 Pc
757.24C	Reduction Screw Break-Off Forceps	1 Pc
757.25C	Rod Bender	1 Pc
757.26C	Probe Straight	1 Pc
757.27C	Probe Curved	1 Pc

Supplied in a Sterilize Box

SPINE INSTRUMENT SET


Top Tray



Middle Tray



Lower Tray

IS-03-03C
INSTRUMENTS FOR SPINE (CONTD....)
ROD PUSHER FORCEPS


Code No: 757.01C

ROD-HOLDER


Code No: 757.02C

FEELER, STRAIGHT


Code No: 757.03C

FEELER, CURVED


Code No: 757.04C

NUT HOLDER


Code No: 757.05C

TAPS LENGTH 235mm

CODE	SIZE (Ø×L)
757.06C.50	5.0 × 235mm
757.06C.55	5.5 × 235mm
757.06C.60	6.0 × 235mm
757.06C.65	6.5 × 235mm
757.06C.70	7.0 × 235mm

ROD BENDER L & R


Code No: 757.07C



Code No: 757.06C

ROD PUSHER


Code No: 757.08C

POLYAXIAL SCREW DRIVER


Code No: 757.09C

MONOAXIAL SCREW DRIVER


Code No: 757.10C

TRAIL ROD


Code No: 757.11C

IS-03-03C
INSTRUMENTS FOR SPINE (CONTD....)
COUNTER TORQUE


Code No: 757.12C

**COUNTER TORQUE REDUCTION SCREW
BREAK OFF**


Code No: 757.13C

**QUICK COUPLING
T-HANDLE**


Code No: 757.14C

**QUICK COUPLING HANDLE,
STRAIGHT**

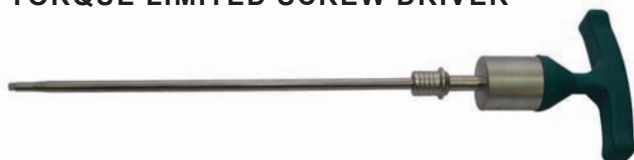

Code No: 757.15C

PIN INSERTER


Code No: 757.16C

NUT SCREW DRIVER


Code No: 757.17C

TORQUE LIMITED SCREW DRIVER


Code No: 757.18C

PEDICLE AWL


Code No: 757.19C

DISTRACTOR


Code No: 757.20C

ROD GRIPPER


Code No: 757.21C

IS-03-03C

INSTRUMENTS FOR SPINE (CONTD....)

PERSUADER

Code No: 757.22C

COMPRESSOR

Code No: 757.023C

**REDUCTION SCREW BREAK-OFF
FORCEPS**

Code No: 757.24C

ROD BENDER

Code No: 757.25C

PROBE STRAIGHT

Code No: 757.26C

PROBE CURVED

Code No: 757.27C



Hospital Equipment Manufacturing Company

HEMC HOUSE

D-313, Sector-63, Noida, U.P. 201301 (INDIA)

Tel: +91-120-4088 888

Fax: +91-120-4088 777

Email: info@hemcmedical.com

Website: www.hemcortho.com

www.hemcmedical.com

Distributor: