

AEROTRAK® HIGH PRESSURE DIFFUSER MODELS 7950, 7955 AND 7960

The TSI AeroTrak® High Pressure Diffuser (HPD) Model 7950, Model 7955 and Model 7960 accessories allow the TSI AeroTrak Particle Counters to measure particulate contamination in high-pressure compressed gas systems. As particle counters cannot sample high pressure gas, they require HPD accessories to reduce the pressure of compressed gases to assess the cleanliness level of compressed gas systems.



Features and Benefits

All Models

- + For monitoring and testing to ISO 14644-1, ISO 8573-1 and SEMI 49.8 limits
- + Reduces gas pressure of up to 120 psi (8.27 bar) to near atmospheric pressure
- + Compatible with AeroTrak Particle Counters (both portable and handheld models) and AeroTrak Cleanroom Condensation Particle Counter Model 9001
- + No manual adjustments or calibration required
- + For use with Clean Dry Air (CDA), Nitrogen (N₂) and Argon (Ar)
- + Passivated stainless steel enclosure resists cleanroom chemicals
- + Exhaust HEPA filter protects HPD accessory from contamination when disconnected from compressed gas source

Model 7950

- + 0.1 cfm (2.83 lpm) nominal flow rate
- + Use with AeroTrak Cleanroom Condensation Particle Counter Model 9001 and handheld particle counters

Model 7955

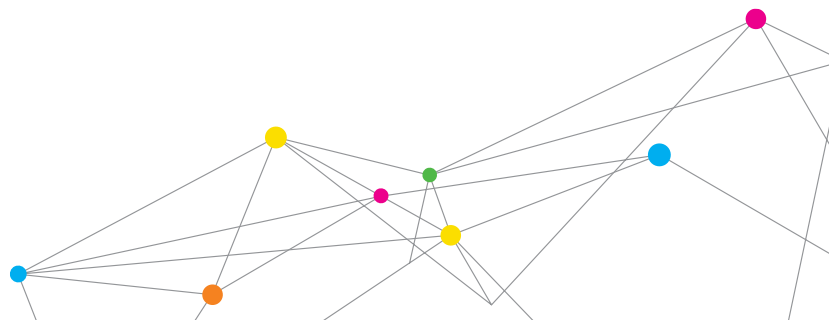
- + 1.0 cfm (28.3 lpm) nominal flow rate
- + Includes bleed air injection for use with ultra low-humidity compressed gas systems

Model 7960

- + 1.0 cfm (28.3 lpm) nominal flow rate
- + Isokinetic-like sampling
- + Use with portable particle counters for pharmaceutical and electronics assembly



UNDERSTANDING, ACCELERATED



SPECIFICATIONS

AEROTRAK® HIGH PRESSURE DIFFUSER MODELS 7950, 7955, AND 7960

	Model 7950	Model 7955	Model 7960
Flow rate	0.1-0.12 cfm (2.83-3.50 L/min)	1.0 cfm (28.3 L/min)	1.0 cfm (28.3 L/min) 50 L/min (Minimum inlet pressure of 40 psi) 100 L/min (Minimum inlet pressure of 80 psi)
Pressure Range	30 - 120 psi (2.1-8.3 bar)		25-120 psi (1.7 - 8.3 bar)
Max Purge Pressure	150 psi (10.34 bar)		
Zero Count Performance	≤1 count per 5 minutes @ 10 nm	≤1 count per 5 minutes @ 0.1 μm	≤1 count per 5 minutes @ 0.5 μm
Sample Gas Types	CDA, N ₂ , Ar		
Dimensions	15.67 x 7.63 x 3.75 in. (39.8 x 19.4 x 9.5 cm)	19.03 x 7.63 x 5.99 in. (48.3 x 19.4 x 15.2 cm)	13.74 x 7.50 x 2.49 in. (34.9 x 19.1 x 6.3 cm)
Weight	7.4 lbs (3.4 kg)	12.3 lbs (5.6 kg)	2.5 lbs (1.1 kg)
Exhaust Filter	HEPA (>99.97% for 0.3 μm particles)		
Bleed Air Filter	N/A	HEPA (>99.97% for 0.3 μm particles)	N/A
Bleed Air Flow	N/A	0.1 - 0.2 cfm (2.83 - 5.86 lpm)	N/A
Inlet fitting	¼-inch VCR Fitting (316SS)		
Outlet fitting	¼-inch tube connector (316L VAR)	½-inch tube connector (316L VAR)	¾-inch tube connector (304SS)
Material	Enclosure & Body: Passivated 304 Stainless Steel		
	VCR Gaskets: Nickel		
Orifice Material	316L VAR Stainless Steel	Ruby	Ruby

Specifications are subject to change without notice.

AeroTrak, TSI and the TSI logo are registered trademarks of TSI Incorporated.



UNDERSTANDING, ACCELERATED

TSI Incorporated - Visit our website www.tsi.com for more information.

USA	Tel: +1 800 874 2811	India	Tel: +91 80 67877200
UK	Tel: +44 149 4 459200	China	Tel: +86 10 8219 7688
France	Tel: +33 1 41 19 21 99	Singapore	Tel: +65 6595 6388
Germany	Tel: +49 241 523030		