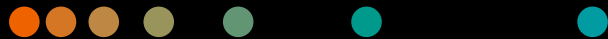


## ACUSON Juniper Ultrasound System

# When more is essential

Release 2.5

[siemens-healthineers.com/juniper](http://siemens-healthineers.com/juniper)





## When more is essential

Delivering versatility and clinical excellence

Clinicians across medical specialties are being challenged by the impact of the global obesity epidemic on exam quality, along with the ever increasing utilization of bedside ultrasound. These challenges have created a high demand for both premium performance and portability. However, clinicians are often forced to make trade-offs for one or the other.

ACUSON Juniper is designed to deliver on both; for the clinician that needs more.

This powerful, lightweight ultrasound system with battery scanning and a small footprint is designed to deliver clinical excellence across a variety of clinical areas without sacrificing on imaging performance and portability.



### **Powerful imaging for reliable results**

Experience advanced imaging techniques to enable confident and consistent ultrasound images, without the effort

### **Next level of clinical versatility**

Access a vast selection of transducers and advanced features to delivers clinical excellence across clinical areas

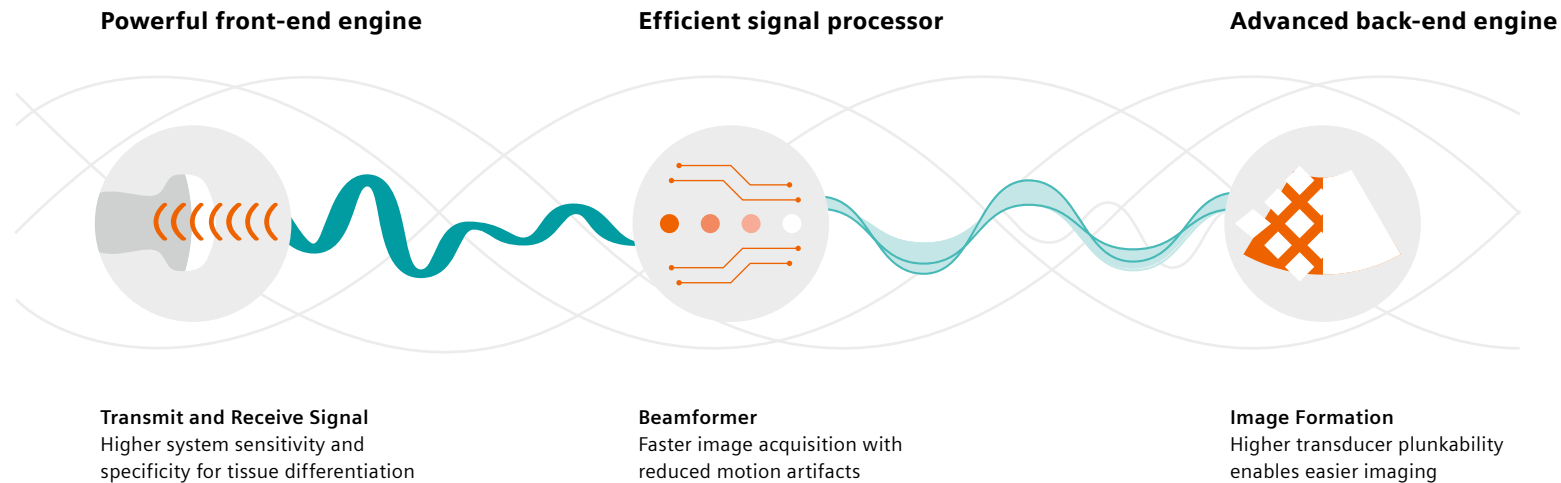
### **Where form and function meet**

Fit into virtually any clinical environment without sacrificing on imaging performance and portability

# Powerful imaging for reliable results

Powered by an advanced platform, ACUSON Juniper is designed from the ground up to offer high fidelity acoustic signals that greatly reduce noise and offer premium image quality in one of the smallest footprints in its class.

Deeper penetration and advanced imaging techniques are enabled by the powerful imaging architecture combined with the latest single crystal transducer technology in general imaging and cardiac ultrasound.



Ultrasound is a unique imaging modality – the quality of the exam is heavily reliant on the operator. Optimizing the ultrasound image is an essential skill that can both improve diagnostic confidence during an exam and enhance visualization of adjacent structures when performing ultrasound guided procedures.

ACUSON Juniper is designed with advanced imaging techniques that help optimize the image during major modes with no user interaction. This allows for consistent, reliable, and efficient image acquisition by reducing the need for tedious manual optimization while delivering the confidence you need to answer the clinical question.



### eSielImage Optimization

Improved image quality and workflows by automatically optimizing imaging parameters while scanning.



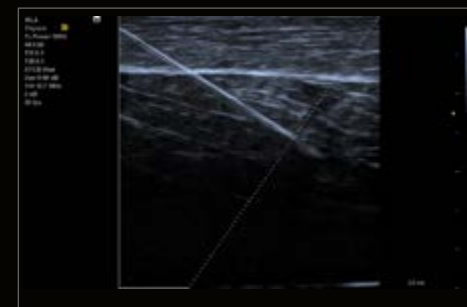
### Auto Flash Color Artifact Suppression

Exceptional color sensitivity and diagnostic confidence by dynamically reducing color artifacts with no user interaction.



### Enhanced Needle Visualization

Improved confidence during procedural guidance with a proprietary algorithm to improve the display of the needle.



### Full Screen Mode

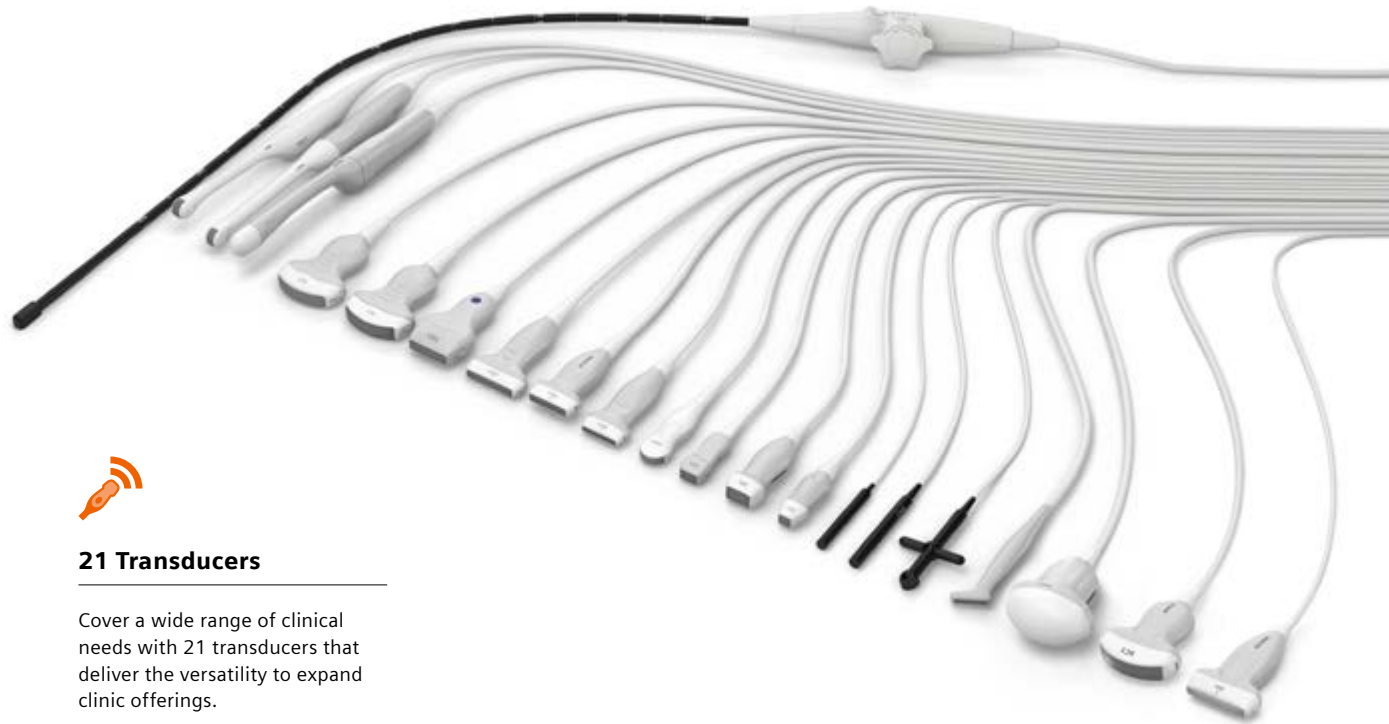
Increases clinical image up to 56% to get the maximum user experience.



# Next level of clinical versatility

Routinely delivering high-quality care means scanning and answering tough clinical questions about virtually every patient regardless of their size, weight, or condition. Sometimes, innovations which push the limitations of ultrasound are required to deliver confident results.

The ACUSON Juniper's large selection of transducers and wide variety of clinical solutions enable a confident exam, no matter the indication.



## 21 Transducers

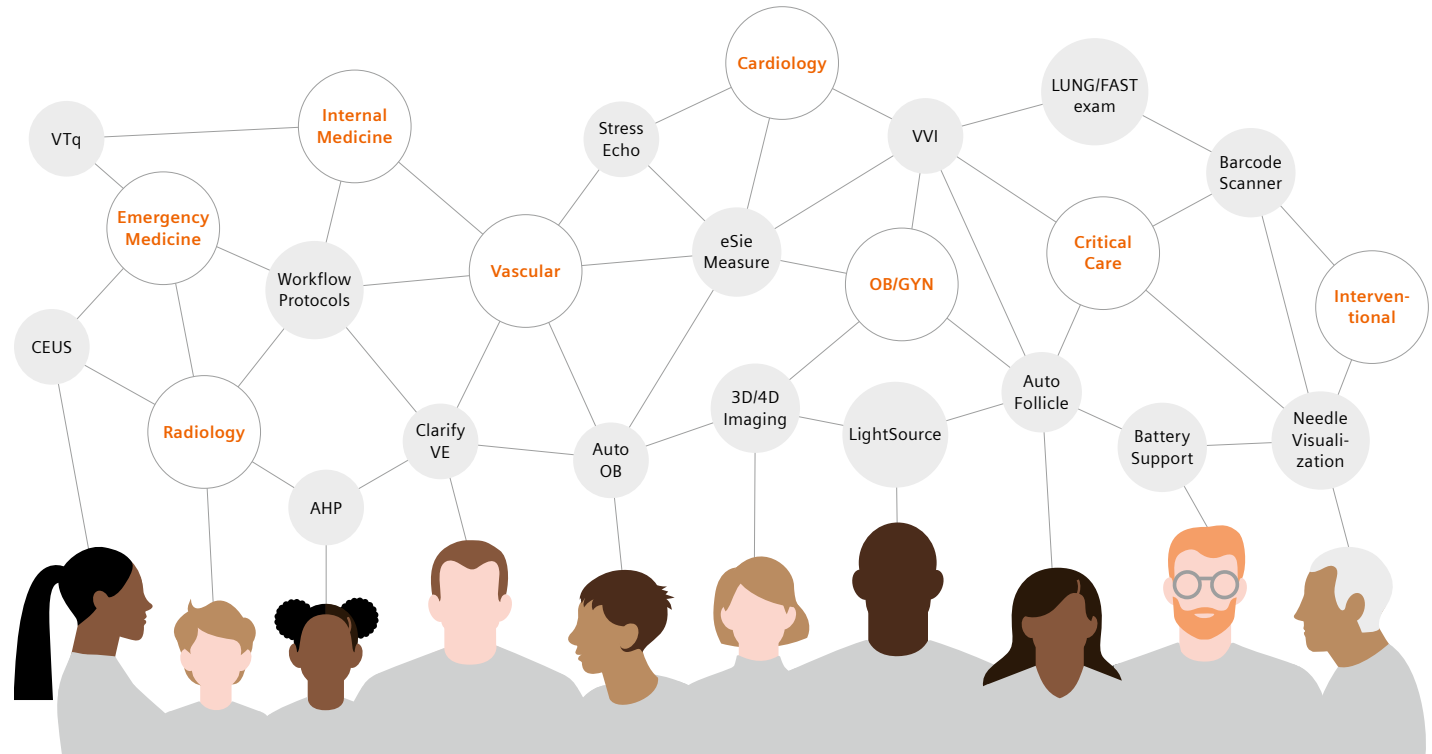
Cover a wide range of clinical needs with 21 transducers that deliver the versatility to expand clinic offerings.

With over 25 advanced tools and options, ACUSON Juniper helps to deliver clinical excellence across clinical areas.



## Advanced Applications

Experience tools ranging from AI powered measurement tools that improve scanning workflows, to clinically specific innovations which improve diagnostic accuracy.<sup>1</sup>



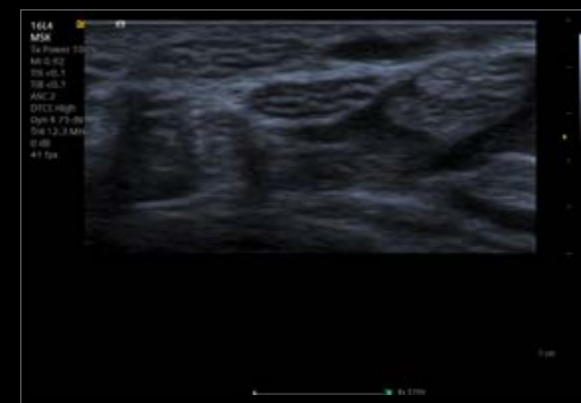




Exceptional image uniformity and sharp border definition is demonstrated in this liver and right kidney image using the 6C1 single crystal transducer.



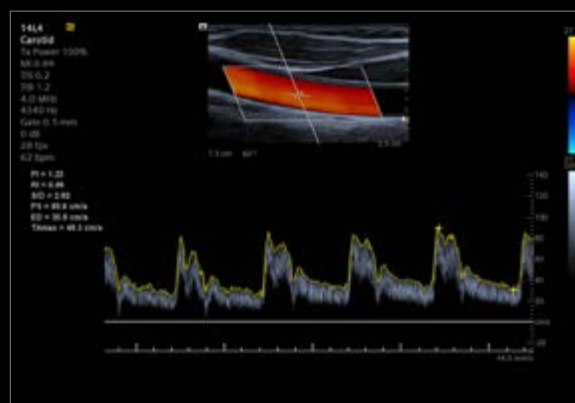
Fetal profile shows excellent contrast resolution and subtle tissue differences using eSiImage Optimization.



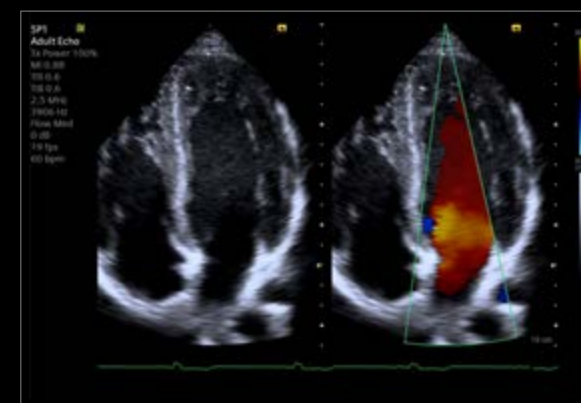
Highly detailed honeycomb pattern of the median nerve is shown supporting the dynamic assessment of musculoskeletal imaging.



Color Doppler image of the main portal vein demonstrates excellent penetration and color sensitivity.

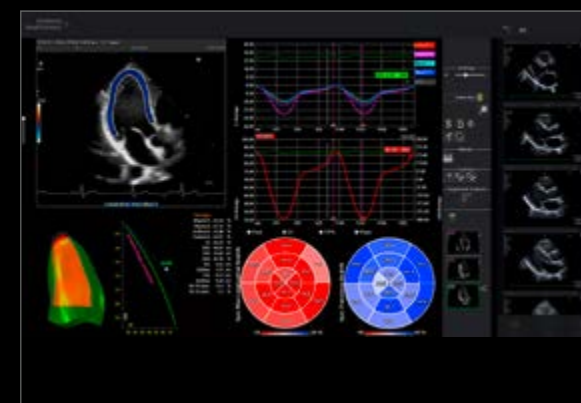
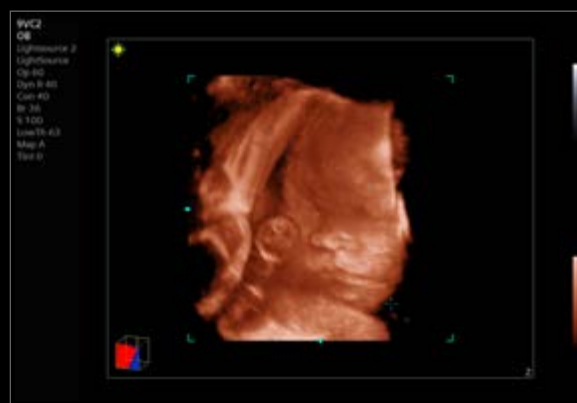
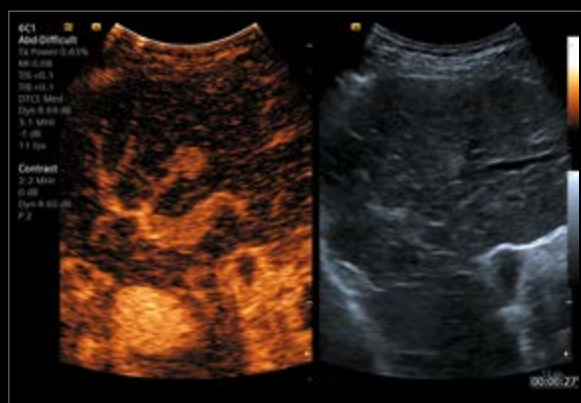
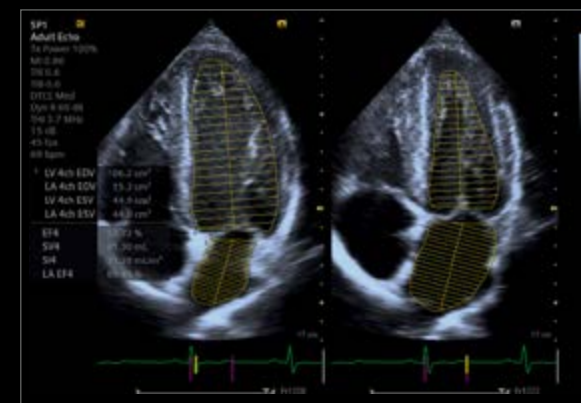
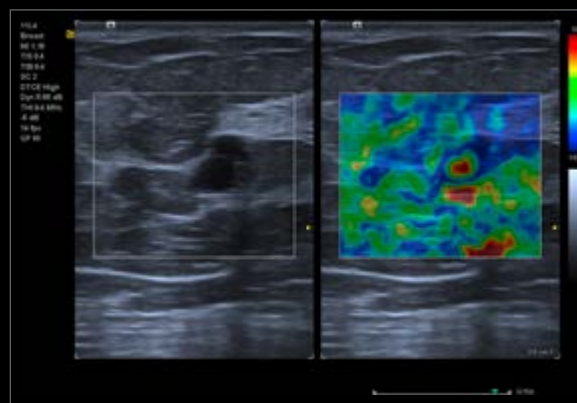


Highly detailed imaging of the peripheral vascular system supports the diagnosis and treatment of vascular disease.



Color Doppler image of the apical four chamber shows exceptional color sensitivity with Auto Color Flash Suppression.





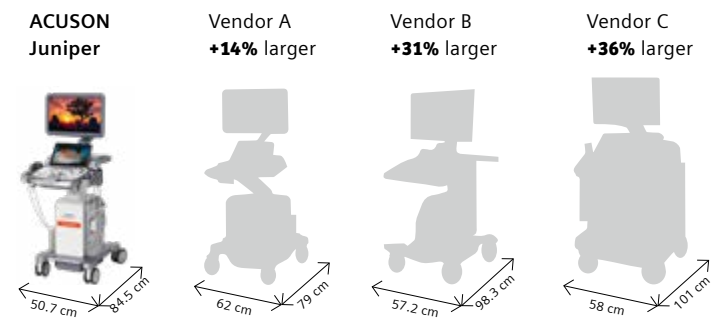
# Where form and function meet

Ultrasound is utilized in a variety of clinical settings, from the physician's office to the hospital. System size and portability are critical attributes when considering an ultrasound machine. Small, crowded rooms, operator ergonomics, and the inability to transport critically ill patients are just a few important considerations.

Performance comes at no cost to the functional design of the system. ACUSON Juniper is a powerful, lightweight ultrasound system with a small footprint designed to fit into virtually any clinical environment without sacrificing on imaging performance. From industrial design to ergonomics and workflow, the ACUSON Juniper delivers user-designed efficiency.

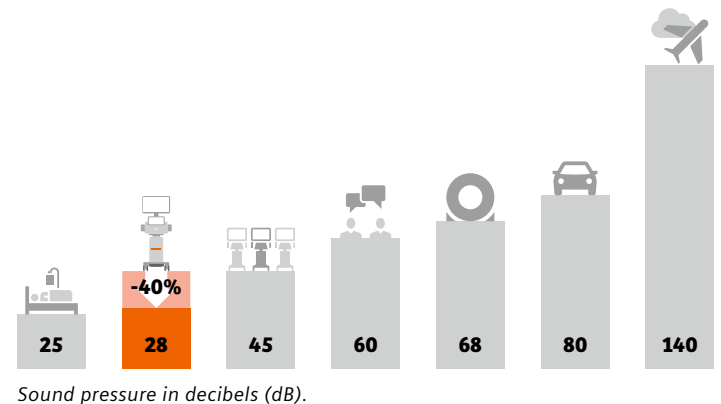
## Small and light

ACUSON Juniper is up to **36% smaller** and weighs an average of 27% less than other systems in its class.



## The sound of silence

ACUSON Juniper is **40% quieter** than the average ultrasound system.



# Bringing mobile workflow to the next level

Move easily between exams, patients, and spaces while still benefiting from remarkable system performance with the ACUSON Juniper system. Designed with intent, the system adjusts easily to individual working preferences – pull the lightweight system from the front or back as you move between exams, scan unplugged, tilt the monitor up or down as needed for your height, or rotate the control panel left or right depending on the patient bed location.



90° right and left rotation allows the user the flexibility of choosing the transducer connectors position.



## **75 minutes of scanning with Battery Support**

**Rapid assessment and improved efficiency at the bedside** with up to 75 minutes of scanning unplugged with integrated Battery Support.



## **Instant access through Wireless Data Transfer**

Improve exam efficiency with integrated wireless data transfer allowing instant access to the patient worklist with the ability to send studies outside of the department for efficient reading workflow.



**13.3" touch display**

Smart UI for quicker scan settings and protocols

**21.5" LED monitor**

Highly adjustable for maximum operator adaptability

**Intuitive control panel**

Customizable height, angle and keys and a customized disposable skin which keeps the control panel clean and sterile

**Lightweight maneuverability**

One of the easiest systems to maneuver, weighing only 76 kilos (168 pounds), and with both rear and front handles

**Purposeful cable management hooks**

Several hooks available for a clean, cable free environment

**Every detail designed to maximize productivity**

Multiple storage bins available as well as space for easy installation of peripherals

**Multiple transducer ports**

Efficient workflow with 5 active transducer ports, 1 pencil cardiac port and 2 physio ports

# Services

Today, the service experience goes above and beyond pure maintenance. Service can make the difference to your daily operations and help you evolve. This is why we keep innovating our portfolio and team up with you for enhanced efficiency and optimized clinical outcomes.



## UpTime Services

UpTime Services are designed to provide equipment availability and assure long-term quality and safety to allow you to manage (un-)planned downtimes so that your equipment performs optimally.

- Planned Maintenance
- Corrective Maintenance
- Application Support

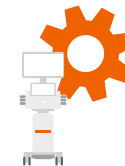
## Service Plans

Benefit from maximized equipment performance and improved staff expertise while keeping unplanned service costs to a minimum.



## UpSkill Education & Training

for workforce know-how and efficiency through knowledge and competency development.



## UpLift Asset Lifetime

for state-of-the-art equipment and the latest clinical applications.



## UpTeam Workforce Management

for managing and monitoring staff education.



## Connect Platforms and Smart Enablers

Your gateway to experience our wide range of customer services. Get connected to our digital platforms and experience our great variety of services to enhance your daily operations.

**Smart Remote Services (SRS)** enables connection to remote applications support and technical support.

**PEPconnect** is your web-based training for Juniper available to you 24/7.

The products/features mentioned in this document may not be commercially available in all countries. Due to regulatory reasons their future availability cannot be guaranteed. Please contact your local Siemens organization for further details.

Standalone clinical images may have been cropped to better visualize pathology.

ACUSON Juniper, 3-Scape, Advanced SieClear, Clarify, DTI, Dynamic TCE, eSie Calcs, eSie Left Heart, eSie Measure, eSie Touch, eSieImage, eSieLink, eSieScan, fourSight, microCase, MultiHertz, SieClear, SieScape, SuppleFlex, Virtual Touch are trademarks of Siemens Medical Solutions USA, Inc.

*syngo* is a registered trademark owned by Siemens Healthcare GmbH.

At Siemens Healthineers, we pioneer breakthroughs in healthcare. For everyone. Everywhere. By constantly bringing breakthrough innovations to market, we enable healthcare professionals to deliver high-quality care, leading to the best possible outcome for patients.

Our portfolio, spanning from in-vitro and in-vivo diagnostics to image-guided therapy and innovative cancer care, is crucial for clinical decision-making and treatment pathways. With our strengths in patient twinning, precision therapy, as well as digital, data, and artificial intelligence (AI), we are well positioned to take on the biggest challenges in healthcare. We will continue to build on these strengths to help fight the world's most threatening diseases, improving the quality of outcomes, and enabling access to care.

We are a team of 66,000 highly dedicated employees across more than 70 countries passionately pushing the boundaries of what's possible in healthcare to help improve people's lives around the world.

#### **Endnote**

<sup>1</sup> AI-powered measurement tools consist of software applications leveraging machine learning-based Artificial Intelligence to achieve the intended outcome including eSie Measure, eSie OB, eSie Left Heart and eSie Follicle.

---

#### **Siemens Healthineers Headquarters**

Siemens Healthcare GmbH  
Henkestr. 127  
91052 Erlangen, Germany  
Phone: +49 9131 84-0  
[siemens-healthineers.com](https://www.siemens-healthineers.com)

#### **Manufacturer**

Siemens Medical Solutions USA, Inc.  
Ultrasound  
22010 S.E. 51st Street  
Issaquah, WA 98029, USA  
Phone: 1-888-826-9702  
[siemens-healthineers.com/ultrasound](https://www.siemens-healthineers.com/ultrasound)