

Vexve shut-off butterfly valve

Series BFSW2, welding / welding, EN (DIN), full bore, DN 300-800, PN 25

Page 1



DN 300-800

Materials

Body	DN 300-500: Steel, P235GH (1.0345) DN 600-800: Steel, P355 NL1 (1.0566)
Disc	DN 300-800: Stainless steel, GX5CrNiMo19-11-2 (1.4408)
Seat	DN 300-800: 1.4542 + HCr plating
Stem	DN 300-800: Stainless steel, X3CrNiMoN27-5-2 (1.4460)
Stem seal	DN 300-800: FPM
Bearing	DN 300-800: PTFE + AISI 316 net

Mounting

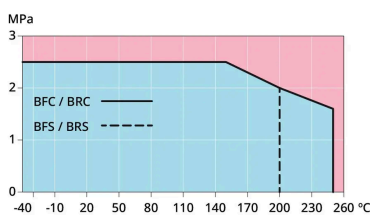
welding / welding, EN (DIN)

Operation

DN 300-800 manual gear

Operating conditions

Body	PN 25
Trim	
Temperature	-40 °C - +200 °C
Leakage rate	A or B (EN 12266-1) depending on requirement



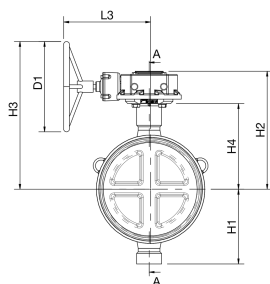
DN 300-800

Below 0 °C contact manufacturer. Lowest allowed ambient temperature -40 °C.

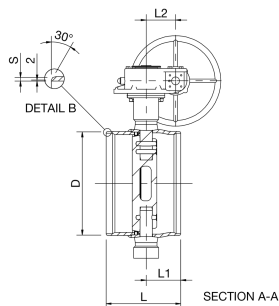
Vexve shut-off butterfly valve

Series BFSW2, welding / welding, EN (DIN), full bore, DN 300-800, PN 25

Page 2



DN 300-800



DN 300-800

Dimensions

DN	PN	Product no.	D	D1	H1	H2	H3	H4	L	L1	L2	L3	S	Kg
300	25	BFS300W2	323.9	400	247.0	432	583	315	270	110.0	105	331	5.6	80
350	25	BFS350W2	355.6	400	255.0	443	593	325	290	134.0	105	331	5.6	94
400	25	BFS400W2	406.4	500	285.0	490	672	347	310	157.0	130	393	6.3	118
450	25	BFS450W2	457.0	400	330.0	522	654	379	330	153.0	130	386	6.3	172
500	25	BFS500W2	508.0	400	360.0	551	683	408	350	153.0	130	386	6.3	196
600	25	BFS600W2	610.0	500	440.0	628	787	450	390	184.0	140	419	7.1	317
700	25	BFS700W2	711.0	400	495.0	684	784	501	430	203.0	182	441	8.0	446
800	25	BFS800W2	813.0	500	581.0	791	948	573	470	226.0	209	483	8.8	770