

## The MagniView endoscopes.

*A step forward in characterisation.*

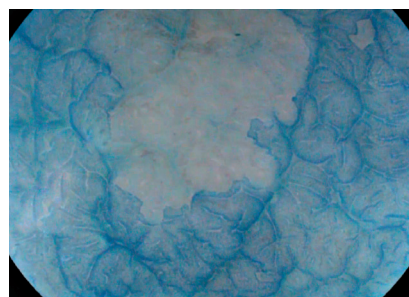


The PENTAX Medical MagniView endoscopes join the outstanding HD+ image series with an optical zoom function. In combination with i-scan, the MagniView endoscopes provides a new standard for daily practice, supporting enhanced characterisation in a wide range of procedures, with its 136 times magnified image. Advanced ergonomics and graduated flexibility of the insertion tube, increases both patient and physician comfort.

MagniView:  
HD+ and Optical Zoom  
technology combined.



Magnified endoscopic image



Magnified endoscopic image

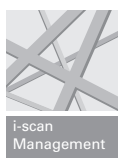
HD+, Optical Zoom technology and i-scan – the perfect combination for improved characterisation.



Optical Zoom

#### Powerful magnification

The optical zoom technology magnifies the image 136 times, allowing for detailed surface structure observation and supporting enhanced characterisation.



i-scan Management

#### Excellent imaging capabilities

The combination of i-scan, HD+ and magnification in a standard endoscope provides state-of-the-art technology in detection and characterisation in daily clinical routine.

#### Fully functional endoscope

Designed to have the same working channel and equivalent outer diameter as a standard diagnostic endoscope, with optical magnification capabilities. Easy to position, easy control of magnification and advanced ergonomic design.

### MagniView Video Endoscopes

Product	Gastroscope	Colonoscopes		
	EG-2990Zi	EC-3890LZi	EC-3890FZi	EC-3890MZi
Insertion Tube Diameter [Ø mm]	9.8	13.2	13.2	13.2
Distal end [Ø mm]	10.6	13.0	13.0	13.0
Instrument channel [Ø mm]	2.8	3.8	3.8	3.8
Working Length [mm]	1,050	1,700	1,500	1,300
Field of view [mm]	140	140	140	140
Tip Deflection up/down [°]	210/120	180/180	180/180	180/180
Tip Deflection right/left [°]	120/120	160/160	160/160	160/160
Remarks	HD+, MagniView, Water Jet System	HD+, MagniView, i-FLEX & TrueTorque, Water Jet System	HD+, MagniView, i-FLEX & TrueTorque, Water Jet System	HD+, MagniView, i-FLEX & TrueTorque, Water Jet System

Distal Rubber Hood: OE-A58 compatible with EG-2990Zi, OE-A59 compatible with EC-3890Zi series.  
PENTAX Medical doesn't take any liability for the accuracy of the content as laid out in this brochure.

#### EMEA Headquarter Germany



PENTAX Europe GmbH  
Julius-Vosseler-Straße 104 . 22527 Hamburg  
Tel.: +49 40 / 5 61 92 - 0 . Fax: +49 40 / 5 60 42 13  
E-mail: info.emea@pentaxmedical.com . www.pentaxmedical.com

TÜV Süd CE0123 • Medical device class: IIa • This product must be used only by Healthcare professionals. Before usage and for detailed product specifications, please refer to the instructions for use. In the interest of technical process, specifications may change without notice.

**PENTAX**  
**MEDICAL**  
*Excellence in Focus*