

Aquaman Series M10 Mono Half Cell Module

SR-60MHLPro
435~455W

SR-60M435HLPro
SR-60M440HLPro
SR-60M445HLPro
SR-60M450HLPro
SR-60M455HLPro

IEC61215/IEC61730

ISO9001:Quality Management System ISO14001:Environmental Management System

ISO45001:Occupational Health and Safety Management System



Higher Power Output



Better Low-light
Performance



MBB Half Cut Cell With
PERC Technology



less shading effect

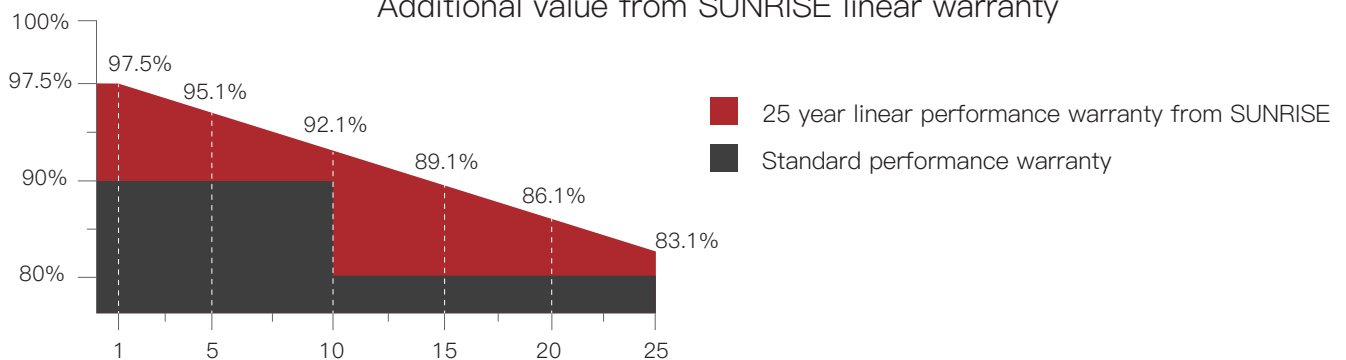


0~+5W Positive
Tolerance



PID Resistance

Additional value from SUNRISE linear warranty

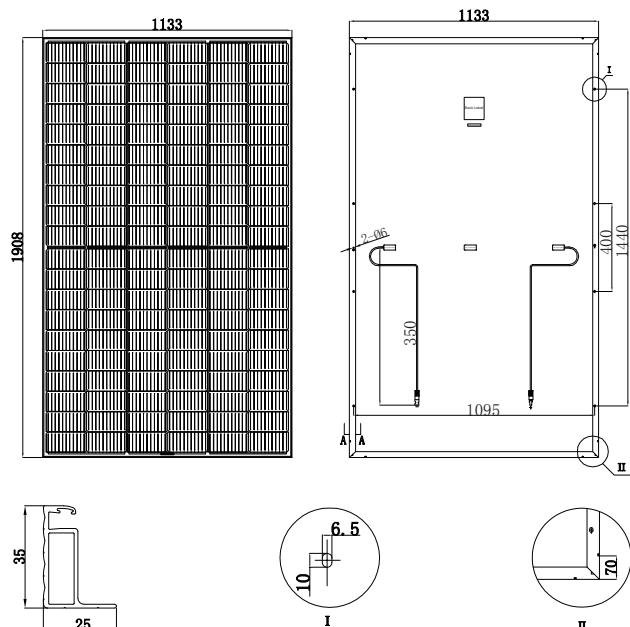


Module Type		SR-60M435HLPPro		SR-60M440HLPPro		SR-60M445HLPPro		SR-60M450HLPPro		SR-60M455HLPPro	
Test Environment		STC	NOCT	STC	NOCT	STC	NOCT	STC	NOCT	STC	NOCT
Tolerance	(W)	0 ~ +5									
Module Efficiency	(%)	20.13		20.36		20.59		20.82		21.05	
Maximum Power	P _{max} (W)	435	323.74	440	327.46	445	331.18	450	334.9	455	338.63
Open Circuit Voltage	V _{oc} (V)	41.38	39.06	41.44	39.12	41.50	39.17	41.56	39.23	41.62	39.29
Short Circuit Current	I _{sc} (A)	13.41	10.83	13.55	10.94	13.67	11.04	13.81	11.15	13.95	11.26
Maximum Power Voltage	V _m (V)	34.16	31.78	34.21	31.83	34.26	31.87	34.31	31.92	34.36	31.97
Maximum Power Current	I _m (A)	12.74	10.19	12.87	10.29	12.99	10.39	13.12	10.49	13.25	10.6
Cell Type	(mm)	MBB-182×91mm(Mono-Crystalline Silicon)									
Number of Cells	(Pcs)	120(6×20)									
Maximum System Voltage	(V)	DC1500									
Temp. Coeff. of V _{oc}	(%/°C)	-0.282									
Temp. Coeff. of I _{sc}	(%/°C)	0.05									
Temp. Coeff. of P _m	(%/°C)	-0.348									
Operating Temperature	°C	-40 to 85									
Nominal Operating Cell Temperature (NOCT)	°C	45±2									
Max. Series Fuse	(A)	25									
Pressure Bearing	(Pa)	5400									
Wind Bearing	(Pa)	2400									

STC: Irradiance 1000W/m², Cell temperature 25°C, AM1.5

NOCT: Irradiance 800W/m², Ambient temperature 20°C, Wind speed 1m/s

ENGINEERING DRAWINGS

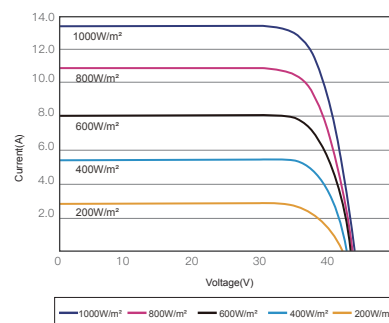


Manufactured in China

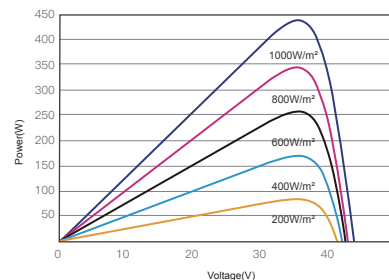
MATERIAL DETAILS

Frame	Anodized aluminum
Glass	3.2mm low-iron tempered suede glass
Cell	6×20pcs mono solar cell
Junction Box	IP ≥ 68, TÜV & UL
Diode quantity	3
Cable&Connector	4mm ² , EVO2 or EVO2 compatible
Cable length	350mm or as customer's requirements

IV CURVES



I-V CURVES OF PV MODULE(445W)



P-V CURVES OF PV MODULE(445W)

PACKING DETAILS

Dimension	(mm)	1908×1133×35
Weight	(kg)	24
Loading Capacity		744pcs/40HC
Packing	pcs/pallet	31

CERTIFICATE

TÜV NORD CERT GmbH
herewith declares that

Sunrise energy Co., Ltd.
No.20 Tongzi River West Road, Zhonglou Development Zone
Changzhou Jiangsu, 213023
P.R. China

is authorized to provide the product mentioned below with the mark as illustrated:

Description of product (details see Annex 2):

Crystalline Silicon Terrestrial Photovoltaic (PV) Modules



Valid from: 2023-04-06
Valid until: 2025-11-04

Certification program:	P12-VA-01 Rev. 17 09.20
Certification fundamental(s):	IEC / EN 61215-1:2016; IEC / EN 61215-1-1:2016; IEC 61215-2:2016 / EN 61215-2:2017 + AC:2017 + AC:2018; IEC 61730-1:2016 / EN IEC 61730-1:2018 + AC:2018; IEC 61730-2:2016 / EN IEC 61730-2:2018 + AC:2018.
Registered No.:	44 780 20 406749 - 218R5M5
Manufacturer:	see Annex 1
Test Report No.:	492011544.007
File No.:	PVP09016/22P-01



TÜV NORD CERT GmbH
Certification Body
Consumer Products



Essen, 2023-04-06

Please also pay attention to the information stated overleaf.

Anlage 1 zum Zertifikat Nr.: / Annex 1 to Certificate No.: 44 780 20 406749 - 218R5M5

Seite / Page 1 von / of 1

Aktenzeichen: / File reference: PVP09016/22P-01

2023-04-06

Manufacturer:

Manufacturer: **Sunrise energy Co., Ltd.**
No.20 Tongzi River West Road, Zhonglou Development Zone,
Changzhou Jiangsu, 213023 P.R. China

Factory inspection report no.: 862010400.005

Remark:

Factory inspection is mandatory to be performed annually. Please refer to factory inspection report for detailed information.



TÜV NORD CERT GmbH
Certification Body
Consumer Products

Description of product(s):

Module types:	PV Modules with 6" Half-cut Mono-crystalline Silicon Solar Cells: 144 cells: SR-M672xxxHLP (xxx = 415 - 450, in increment of 5) 132 cells: SR-M666xxxHLP (xxx = 380 - 410, in increment of 5) 120 cells: SR-M660xxxHLP (xxx = 345 - 375, in increment of 5)
Maximum system voltage:	1500V
Fuse rating:	25A
Electrical protection class:	Class II
Pollution degree:	1
Material group:	I
Design load (positive / negative):	1600Pa / 1600Pa
Safety factors:	1.5
Fire safety class:	Class C according to ANSI/UL 1703-2018 (as per ANSI/UL 790-2018)

Module types:	PV Modules with 7" Half-cut Mono-crystalline Silicon Solar Cells: 144 cells: SR-72MxxxHLPro (xxx = 530 - 560, in increment of 5) 132 cells: SR-66MxxxHLPro (xxx = 485 - 510, in increment of 5) 120 cells: SR-60MxxxHLPro (xxx = 440 - 465, in increment of 5) 108 cells: SR-54MxxxHLPro (xxx = 400 - 420, in increment of 5) 96 cells: SR-48MxxxHLPro (xxx = 355 - 370, in increment of 5) 84 cells: SR-42MxxxHLPro (xxx = 310 - 325, in increment of 5) 72 cells: SR-36MxxxHLPro (xxx = 265 - 280, in increment of 5)
Maximum system voltage:	1500V
Fuse rating:	25A
Electrical protection class:	Class II
Pollution degree:	1
Material group:	I
Design load (positive / negative):	1600Pa / 1600Pa
Safety factors:	1.5
Fire safety class:	Class C according to ANSI/UL 1703-2018 (as per ANSI/UL 790-2018)



TÜV NORD CERT GmbH
Certification Body
Consumer Products

Module types:

PV Modules with 7" Half-cut TOPCon Mono-crystalline Silicon Solar Cells:

156 cells: SR-78MxxxNHLPro (xxx = 590 - 635, in increment of 5)

144 cells: SR-72MxxxNHLPro (xxx = 545 - 585, in increment of 5)

132 cells: SR-66MxxxNHLPro (xxx = 500 - 535, in increment of 5)

120 cells: SR-60MxxxNHLPro (xxx = 455 - 485, in increment of 5)

108 cells: SR-54MxxxNHLPro (xxx = 410 - 440, in increment of 5)

96 cells: SR-48MxxxNHLPro (xxx = 365 - 390, in increment of 5)

84 cells: SR-42MxxxNHLPro (xxx = 320 - 340, in increment of 5)

72 cells: SR-36MxxxNHLPro (xxx = 275 - 290, in increment of 5)

Maximum system voltage:

1500V

Fuse rating:

25A

Electrical protection class:

Class II

Pollution degree:

1

Material group:

I

Design load (positive / negative):

3600Pa / 1600Pa

Safety factors:

1.5

Fire safety class:

Class C according to ANSI/UL 1703-2018 (as per ANSI/UL 790-2018)

**TÜV NORD CERT GmbH**
Certification Body
Consumer Products

Module types:	PV Modules with 8" Half-cut Mono-crystalline Silicon Solar Cells: 132 cells: SR-66MAXxxxH (xxx = 640 - 665, in increment of 5) 120 cells: SR-60MAXxxxH (xxx = 580 - 605, in increment of 5) 108 cells: SR-54MAXxxxH (xxx = 525 - 545, in increment of 5) 96 cells: SR-48MAXxxxH (xxx = 465 - 480, in increment of 5) 84 cells: SR-42MAXxxxH (xxx = 410 - 420, in increment of 5) 110 cells: SR-55MAXxxxH (xxx = 535 - 555, in increment of 5)
Maximum system voltage:	1500V
Fuse rating:	30A
Electrical protection class:	Class II
Pollution degree:	1
Material group:	I
Design load (positive / negative):	1600Pa / 1600Pa
Safety factors:	1.5
Fire safety class:	Class C according to ANSI/UL 1703-2018 (as per ANSI/UL 790-2018)

Remark:

For detailed product information, please refer to CDF (Constructional Data Form) in Annex 1 of test report.



TÜV NORD CERT GmbH
Certification Body
Consumer Products

**Certificate
of conformity with the following
European Directives**

Registered No.:
44 799 23 406749 - 080

Low-Voltage Directive 2014/35/EU

Date of application	File reference	Test report No.	Date of issue	Place of issue
2022-09-01	PVP9016/22P-01	492011544.007	2023-04-06	Essen

This is to certify that the following products comply to the essential requirements of the above mentioned European Directive and the following standards, taking into account the German national deviations:

Product: Crystalline Silicon Terrestrial Photovoltaic (PV) Modules

Type designation: See Annex 1

Applicant: **Sunrise energy Co., Ltd.**
No.20 Tongzi River West Road, Zhonglou Development Zone,
Changzhou Jiangsu, 213023 P.R. China

Standard(s): EN IEC 61730-1:2018; EN IEC 61730-1:2018/AC:2018-06
EN IEC 61730-2:2018; EN IEC 61730-2:2018/AC:2018-06

This Certificate of conformity is based on the evaluation of samples of the product. It does not imply an assessment of the production and it does not permit the use of a mark of conformity or of a safety mark of the TÜV NORD CERT GmbH. The holder of this certificate may use this Certificate together with his EC-Declaration of Conformity.



Certification Body
Specialist Manager Consumer Products

TÜV NORD CERT GmbH
Am TÜV 1
D-45307 Essen
P.O.Box 10 32 61
D-45032 Essen
Fon: +49 (0)201 825-5120
Fax: +49 (0)201 825-3209
Email: prodcert@tuev-nord.de

Description of product(s):

Module types: **PV Modules with 6" Half-cut Mono-crystalline Silicon Solar Cells:**
144 cells: SR-M672xxxHLP (xxx = 415 - 450, in increment of 5)
132 cells: SR-M666xxxHLP (xxx = 380 - 410, in increment of 5)
120 cells: SR-M660xxxHLP (xxx = 345 - 375, in increment of 5)

Module types: **PV Modules with 7" Half-cut Mono-crystalline Silicon Solar Cells:**
144 cells: SR-72MxxxHLPro (xxx = 530 - 560, in increment of 5)
132 cells: SR-66MxxxHLPro (xxx = 485 - 510, in increment of 5)
120 cells: SR-60MxxxHLPro (xxx = 440 - 465, in increment of 5)
108 cells: SR-54MxxxHLPro (xxx = 400 - 420, in increment of 5)
96 cells: SR-48MxxxHLPro (xxx = 355 - 370, in increment of 5)
84 cells: SR-42MxxxHLPro (xxx = 310 - 325, in increment of 5)
72 cells: SR-36MxxxHLPro (xxx = 265 - 280, in increment of 5)

Module types: **PV Modules with 7" Half-cut TOPCon Mono-crystalline Silicon Solar Cells:**
156 cells: SR-78MxxxNHLPro (xxx = 590 - 635, in increment of 5)
144 cells: SR-72MxxxNHLPro (xxx = 545 - 585, in increment of 5)
132 cells: SR-66MxxxNHLPro (xxx = 500 - 535, in increment of 5)
120 cells: SR-60MxxxNHLPro (xxx = 455 - 485, in increment of 5)
108 cells: SR-54MxxxNHLPro (xxx = 410 - 440, in increment of 5)
96 cells: SR-48MxxxNHLPro (xxx = 365 - 390, in increment of 5)
84 cells: SR-42MxxxNHLPro (xxx = 320 - 340, in increment of 5)
72 cells: SR-36MxxxNHLPro (xxx = 275 - 290, in increment of 5)



TÜV NORD CERT GmbH
Certification Body
Consumer Products

Module types:

PV Modules with 8" Half-cut Mono-crystalline Silicon Solar Cells:

132 cells: SR-66MAXxxxH (xxx = 640 - 665, in increment of 5)

120 cells: SR-60MAXxxxH (xxx = 580 - 605, in increment of 5)

108 cells: SR-54MAXxxxH (xxx = 525 - 545, in increment of 5)

96 cells: SR-48MAXxxxH (xxx = 465 - 480, in increment of 5)

84 cells: SR-42MAXxxxH (xxx = 410 - 420, in increment of 5)

110 cells: SR-55MAXxxxH (xxx = 535 - 555, in increment of 5)

100 cells: SR-50MAXxxxH (xxx = 485 - 500, in increment of 5)

90 cells: SR-45MAXxxxH (xxx = 435 - 450, in increment of 5)

80 cells: SR-40MAXxxxH (xxx = 390 - 400, in increment of 5)

70 cells: SR-35MAXxxxH (xxx = 340 - 350, in increment of 5)



TÜV NORD CERT GmbH
Certification Body
Consumer Products

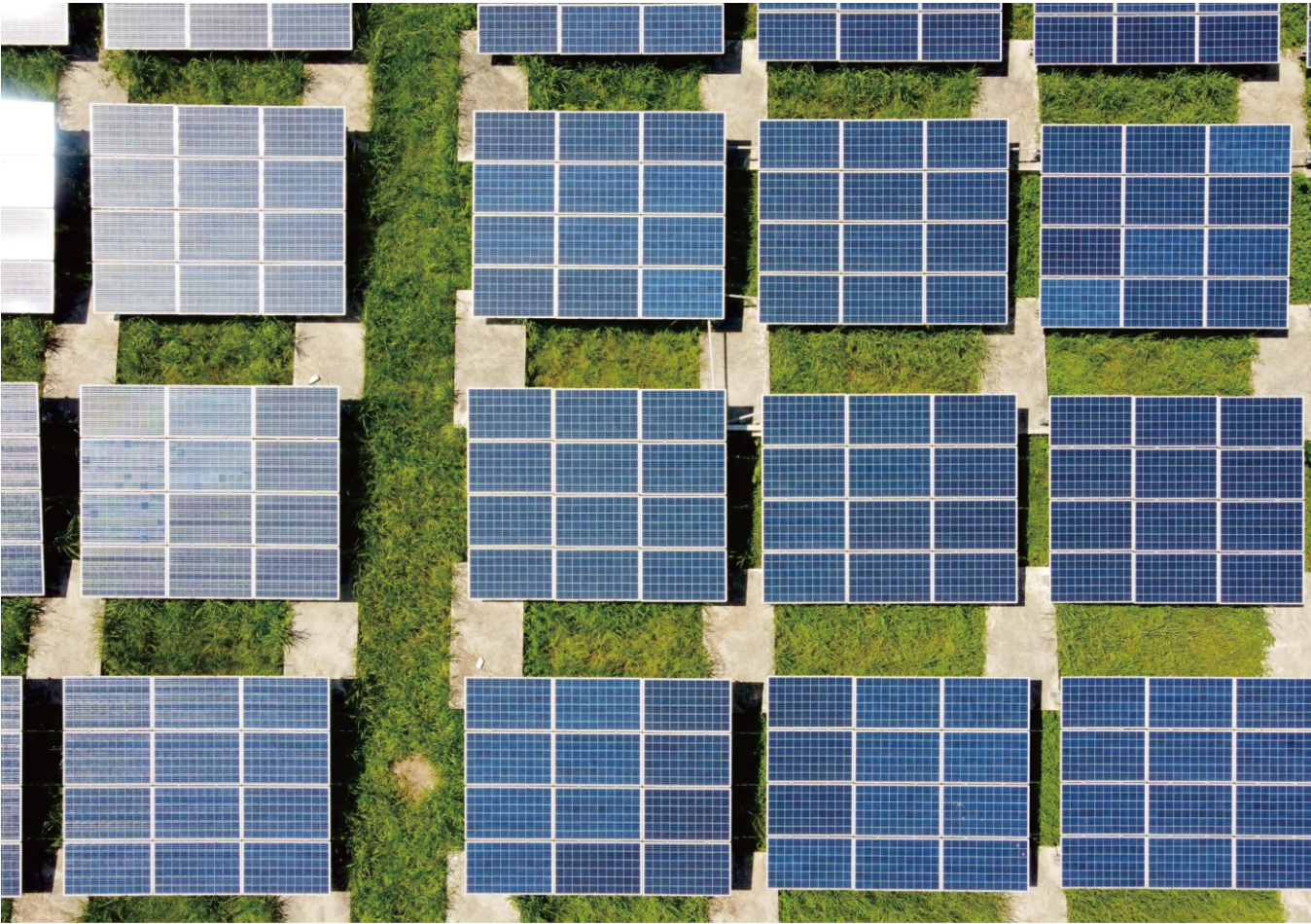
SOFAR 25K~50KTLX-G3

25 / 30 / 33 / 36 / 40 / 45 / 50 kW

THREE-PHASE THREE TO FOUR MPPTS



- Product advantages
- Max. efficiency up to 98.80%
 - Up to 4 MPPTs with DC overload capability (up to 150%)
 - Type II SPD for both DC and AC side
 - Prolonged AC overload capability (110%)
 - Low start-up voltage, wide MPPT voltage range
 - Compatible with 500 W+ modules
 - I-V curve scanning function



Datasheet	SOFAR 25KTLX-G3	SOFAR 30KTLX-G3	SOFAR 33KTLX-G3	SOFAR 36KTLX-G3	SOFAR 40KTLX-G3	SOFAR 45KTLX-G3	SOFAR 50KTLX-G3
Input (DC)							
Max. input voltage	1100V						
Rated input voltage	620V						
Start-up voltage	200V						
MPPT operating voltage range	180V-1000V						
Number of MPPTs	3				4		
Number of DC inputs	2 for each MPPT						
Max. input MPPT current	3*40A	3*40A	3*40A	3*40A	4*40A	4*40A	4*40A
Max. input short circuit current	3*50A	3*50A	3*50A	3*50A	4*50A	4*50A	4*50A
Output (AC)							
Rated output power	25000W	30000W	33000W	36000W	40000W	45000W	50000W
Max. apparent power	28000VA	34000VA	37000VA	40000VA	44000VA	50000VA	55000VA
Max. output current	42.4A	51.5A	56A	60.6A	66.7A	75.8A	83.3A
Rated output voltage	3/N/PE, 230/400Vac						
Output voltage range	310Vac-480Vac						
Rated output frequency	50/60Hz						
Output frequency range	45Hz-55Hz/55Hz-65Hz						
Active power adjustable range	0-100%						
THDi	<3%						
Power factor	1 (adjustable +/-0.8)						
Efficiency							
Max. efficiency	98.6%	98.6%	98.6%	98.6%	98.8%	98.8%	98.8%
European efficiency	98.2%	98.2%	98.2%	98.2%	98.2%	98.2%	98.2%
Protection							
DC reverse polarity protection	Yes						
Anti-islanding protection	Yes						
Leakage current protection	Yes						
Ground fault monitoring	Yes						
PV-array string fault monitoring	Yes						
DC switch	Yes						
SPD	PV: type II, AC: type II						
General Data							
Ambient temperature range	-30 ℃--+60 ℃						
Self-consumption at night	<3W						
Topology	Transformerless						
Degree of protection	IP65						
Allowable relative humidity range	0-100%						
Max. operating altitude	4000m						
Cooling	Smart air cooling						
Dimension (W*H*D)	585*480*220mm						
Weight	36kg				37kg		
Display	LCD & Bluetooth +APP						
Communication	RS485/WiFi						
Standard	IEC/EN 61000-6-1/2/3/4, IEC 62116, IEC 61727, IEC 61683, IEC 60068-1/2/14/30, IEC/EN 62109-1/2 C99, VDE-AR-N 4105, VDE V 0126-1-1.CE10-21, EN 50549-1, NRS 097-2-1,UNE 217002-2020						

*All specifications are subject to change without notice.

Version: 1.2, Updated 18.11.2022

Applicable products

This Factory's Warranty only applies to the following products, which are installed in European countries.

PRODUCT	STANDARD WARRANTY PERIOD (MONTHS)	SERVICE MODES
INVERTERS		
GRID-TIED(1.1KW~255KW)	120	Remote Technical Support Service or/ and Onsite Service
ENERGY STORAGE(ME, HYD, ESI SERIES)	60	
ACCESSORIES		
SOFARSOLAR ANTI-REVERSE POWER CONTROL(ARPC)	24	Remote Technical Support Service or/ and Onsite Service
SOFARSOLAR INTELLIGENT ANTI-REFLUX BOX(SAR-100)	24	
CT CLAMP	24	
SMART METER	24	
WIFI DONGLE	24	

*This factory warranty is a promise from SOFARSOLAR to its end users on the applicable products listed above. Subject to the trading countries/states, end users may receive an additional warranty promise (should be at least equivalent to the Factory's warranty) which is provided by SOFARSOLAR's local distributor; should any claims arise in this respect, please direct the claims to the local distributor.

Please refer to the latest version of the SOFARSOLAR limited warranty by visiting our global website via <https://sofarsolar.com/>

Warranty Period

The standard warranty period for applicable SOFARSOLAR inverters is 60 months (5 years) for Energy storage Inverters and 120 months (10 years) for Grid-tied Inverters from the warranty start date.

The Standard Warranty Period shall commence from the earlier of the following:

- (1) the date of when the first installation of the warranted product is completed, or the date of purchase on a valid purchasing invoice that end user provide.
- (2) 6 months after the date of production from Shenzhen SOFARSOLAR Co.Ltd (defined in the Serial number of the product) for circumstances where end user fails to provide a valid purchasing invoice.

Warranty Conditions

In the case of a faulty inverter during the agreed SOFARSOLAR warranty period, please report the defective inverter with a brief error description to our service hotline for registering and send your warranty card to our service department by fax/email to process the warranty claim. You may also contact your dealer (SOFARSOLAR authorized dealer or distributor) or installer if your unit is defective or faulty.

To make a claim under the warranty periods of SOFARSOLAR, you need to provide us the following information and documentation of the faulty inverter:

- 1) Product Model and serial number
- 2) A copy of the valid purchasing invoice
- 3) Fault descriptions and error IDs (where applicable)
- 4) End user and/or claimant details
- 5) Detailed information about the entire system (module, PV system diagram, installation date, etc.)
- 6) Documentation of previous claims/exchanges (if applicable)

If an inverter is faulty while it is under SOFARSOLAR warranty period, it will be:

- Repaired by SOFARSOLAR, or
- Repaired on-site, or
- Exchanged with a refurbished inverter that includes all firmware updates

If the inverter needs to be exchanged, the remainder of the warranty period will be transferred to the replacement unit, i.e. the warranty period of the original device will continue. In this event, you will not receive a new warranty card, and this replacement will be registered by SOFARSOLAR. If the remaining warranty period is less than 6 months, you will automatically receive a 6-month warranty period for the replacement unit.

The warranty includes the cost of work and material necessary to regain a faultless functioning inverter. All other costs, particularly transports, travel and accommodation cost of SOFARSOLAR personnel as well as costs of your own staff are not included in the warranty. Furthermore, claims for compensation for direct or indirect damages arising from the defective inverter are not covered by the warranty.

Faulty inverters and components should be returned to SOFARSOLAR, they must be packed in their original or equivalent packaging for transportation.

SOFARSOLAR keeps the right to arrange the warranty service for end users and to use third parties for performing warranty services.

All warranty services are free of charge only if the action is agreed with SOFARSOLAR in advance.

Scope of the Manufacturer Warranty

To provide excellent Service to SOFARSOLAR's end users, all SOFARSOLAR authorized Dealers or Distributors are requested to respond to your warranty claim. SOFARSOLAR will replace any products or parts of the product during the Warranty Period proved to be defective in design or manufacture. Any defect caused by the following situations will not be covered by the manufacturer's warranty (the Dealers or Distributors are responsible and authorized by SOFARSOLAR for the following investigation):

- 1) "Warranty Card" not being sent back to Distributor/Dealer or SOFARSOLAR
- 2) The Product has been modified, its design has been changed or parts have

been replaced by parts not approved by SOFARSOLAR

- 3) Changes have been made, or repairs been attempted by technician, without authorization from SOFARSOLAR, or serial number or seals have been removed
- 4) The product has been installed or commissioned incorrectly
- 5) You or another user have failed to comply with the safety regulations (VDE standards or equivalent)
- 6) The product has been improperly stored and damaged while being stored by the dealer or the end user
- 7) The defect is damage during transportation (including painting scratch caused by movement inside packaging during shipping). A claim for such transport damage should be made directly to the shipping company/insurance company as soon as the container/packaging is unloaded and such damage is identified
- 8) You or another user have failed to follow any/all of the user manual, the installation guide, and the maintenance regulations
- 9) The device has been used improperly or misused
- 10) Insufficient ventilation of the device
- 11) The maintenance procedures relating to the product have not been followed to an acceptable standard
- 12) The defect has been caused by force majeure (violent or stormy weather, lightning, overvoltage, fire etc.)
- 13) The damage is only cosmetic and has no impact on the functioning of the device

This warranty is without prejudice to your rights under the statutory law, including but not limited to warranty rights in relation to the seller, i.e. if applicable rectification, reduction of the price, rescission of the sale and damages.

All demands from or in connection with this warranty are subject to Chinese law, Shenzhen is the exclusive place of jurisdiction and all disputes arising from or in connection with this warranty should be submitted for arbitration to the Shenzhen court of international arbitration. This warranty is provided in addition to other rights and remedies held by a consumer at law.

Extension of the Warranty Period

For SOFARSOLAR inverters you may apply for a warranty extension during 60 months from the date of production from SOFARSOLAR by providing the serial number and copy of the warranty card of the unit. SOFARSOLAR may reject any application received which does not meet the date requirement. Extended warranty period can be purchased to 10, 15, or 20 years.

Once the purchase of the warranty extension has been processed, SOFARSOLAR will send the warranty extension certificate to the

customer confirming the extended warranty period.

Latest information about the warranty terms and conditions and local service hotline can be obtained from our website: www.sofarsolar.com

Contact us

You can directly contact our professional after-sales team:

Sofarsolar GmbH, Krämerstrasse 20, 72764 Reutlingen

Tel: +49 7121 31 767 30

Shenzhen Sofarsolar Co., Ltd.

TEL: +86-0755 3689 9945

Email: service@sofarsolar.com

Web: www.sofarsolar.eu

Certificate of Conformity

Registered No.:
COCPPV07047/21B-03

File reference
PVP07047/21B-01

Test report No.
492011831.002

Date of issue
2021-11-22

On the basis of the tests undertaken, the samples of the below product(s) have been found to comply with the essential requirements of the referenced specifications at the time the tests were carried out:

Applicant: **Shenzhen SOFARSOLAR Co., Ltd.**
401, Building 4, AnTongDa Industrial Park, District 68, XingDong
Community, XinAn Street, BaoAn District, Shenzhen, China.

Manufacturer: **Shenzhen SOFARSOLAR Co., Ltd.**
401, Building 4, AnTongDa Industrial Park, District 68, XingDong
Community, XinAn Street, BaoAn District, Shenzhen, China.

Factory: **Coded by debtor no. 55513462**

Product: Solar Grid-tied Inverter

Type designation: SOFAR 25KTLX-G3, SOFAR 30KTLX-G3, SOFAR 30KTLX-G3-A,
SOFAR 33KTLX-G3, SOFAR 36KTLX-G3, SOFAR 40KTLX-G3,
SOFAR 45KTLX-G3, SOFAR 50KTLX-G3,
SOFAR 40KTLX-G3-HV, SOFAR 50KTLX-G3-HV
Three-phase, Firmware version: V000001

Certification program: BOS-P-01 Rev. 00

Certification fundamental(s): IEC 62109-1:2010 & IEC 62109-2:2011
See test report for detailed information.

This document is based on the evaluation of the samples of the above mentioned product(s). It does not imply an assessment of the mass-production of the product(s), and it does not permit the use of a TÜV NORD mark. The holder of this document may use it in connection with the related test report(s).



Renewable Energy

BOS-T-015 COC



中国认可
产品
PRODUCT
CNAS C183-P

Page 1 of 1

TÜV NORD (HANGZHOU) CO., LTD.
Member of TÜV NORD Group
Tel: +86-571-85386989
Fax: +86-571-85386986
www.tuv-nord.com/cn
P.R. China

Version 1.3