

DIGITAL RADIOGRAPHY X-RAY MACHINE

(Floor Mounted)

PLD5600B



1. Company info	2/10
2. Application	3/10
3. Movement of table	4/10
4. Product Specification	5/10
5. Digital Working Station with software	6/10
6. Advantages	7/10-8/10

BROCHURE

Company introduction

Perlove Medical was established in 2003, which is a high-tech enterprise integrating the research and development, production, sales and after-sales service of medical X-ray imaging equipment. We always adhere to customer demand-oriented, and devote our-selves to providing high-quality products and services to global medical institutions. We have always persisted to independent research and development and technological innovation, helping improve medical conditions and reduce medical costs around the world through keeping close to clinical needs, and constantly advancing the development of medical technology. Our products are exported to more than 180 countries and regions.



The main medical X-ray equipment:

Mobile Digital Radiography System (Mobile DR);

Floor-mounted Digital X-ray Equipment; Floor-mounted Dynamic Digital X-ray Equipment;

Floor-mounted Digital Radiography and Fluoroscopy Equipment;

High Frequency Mobile C-arm System (Image Intensifier C-arm, Flat Panel Detector C-arm, DSA C-arm, Integrated design C-arm);

PRODUCT DESCRIPTION

1: Application:

It is suitable for radiology department, orthopedics, ward, emergency room, operating room, ICU and other departments. With flexible movement, easy operation, high efficiency, to meet the radiography for all of human body's parts, such as head, limbs, chest, spine, lumbar vertebrae, abdomen, etc.



Radiography dep.



Fever clinic,



Children' s Dep.



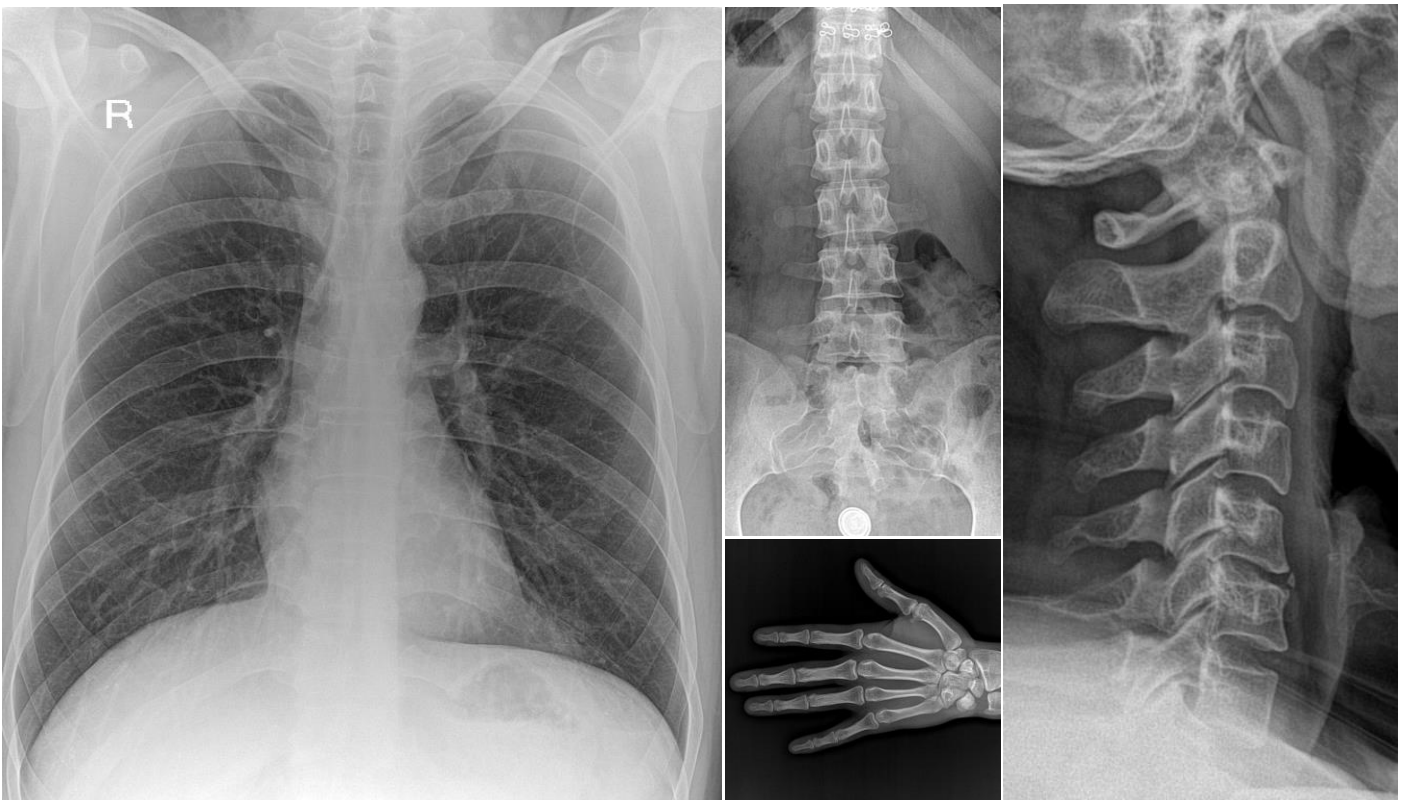
Operating room.



Ward/ICU,



physical examination center .



2. Movement of machine

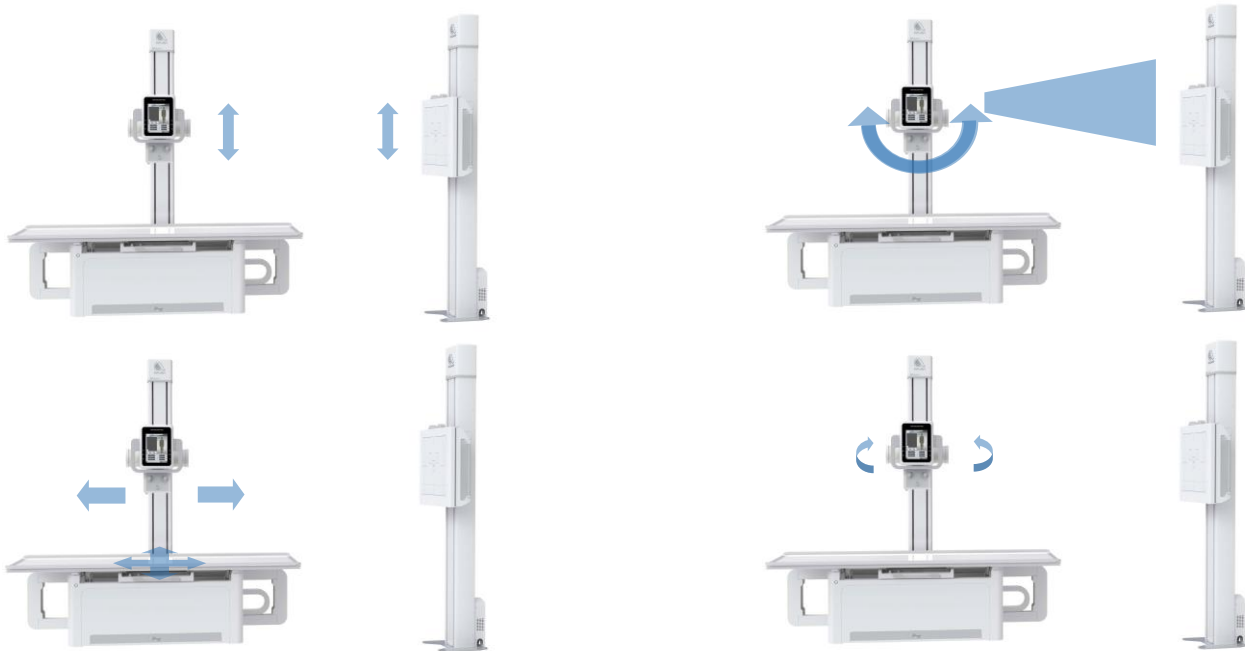


Table and tube Movement: (SYC20D)

Digital touch screen display on the tube, display for protocol selection, data correction and image review	
Filter : Gobi: 10:1; 103L/INCH; Fixed Filter 15" * 18"	
Height of tabletop:	550mm
Longitudinal moving of spherical column:	1550mm
Longitudinal moving of tabletop:	1000mm
Lateral movement of tabletop:	260mm
Tabletop dimensions:	2250 x 810 mm
Tube rotates around the column:	-180° ~ +180°
Tube Up and down:	1300mm
Tube Swing around axis:	-180° ~ +180°
Maximum load capacity of the table	200 kg
Grid	With

Bucky stand(XPJ20C)

Range of the detector mechanism Center:	1300mm
Features:	498.5×449mm 230LP1 10:1

3: Product Specification

1. Item	2. Content	3. Technical Parameters
Power	Voltage	380V±38V
	Frequency	50Hz±10Hz
X-ray High Voltage Generator	Power	50KW
	Inverter Frequency	500KHz
	Tube voltage	40kV - 150kV, Step 1 k
	Tube current	10mA - 630mA
	mAs	0.1-630mAs
Collemator	Illumination brightness	> =200Lux
	Filiter	> =1mmAL
X ray tube	Model:	XQG 50.
	Tube Focus: big/small	1.2mm /0.6mm
	Input power	Big focus 74kW Small focus 30kW
	Target surface	12°
	Anode thermal capacity	300KHU (rotating anode)
	Anode Heat dissipation:	750W
	Tube Capacity:	1300KHU
	Rotary anode speed:	8400rpm
	Work voltage:	40-150KV
Wireless Flat Penal Detector 1	Materials	A-Si(Amorphous Silicon)- CSI
	Active area	430(H)×430(V)mm
	Pixel matrix	3072(H)×3072(V)
	Pixel pitch	139μm
	A/D	16bit
Flat Penal Detector 2 (optional)	Materials	A-Si(Amorphous Silicon)- CSI
	Active area	430(H)×430(V)mm
	Pixel matrix	3072(H)×3072(V)
	Pixel pitch	139μm
	A/D	16bit
	Materials	A-Si(Amorphous Silicon)- CSI

4. Digital Working Station with software:



- ★ Case registration: Auto registration, be equipped with Dicom Worklist SCU. To simplify the input process for doctors, greatly reduce the amount of labour and greatly improve the working efficiency
- ★ Image Acquisition: Automatic window adjustment, Automatic cropping, Automatic transmit.
- ★ Image Processing: Tissue equilibrium, W/L adjustment, Gamma correction, interest district, reversed phase, noise reduction, smooth, sharpen, pseudo color, edge extraction, shadow compensation, filter nuclear, single window, dual-window, four windows, movement, right rotated 90°, left rotated 90°, level mirror image, vertical mirror image, magnifying glass, image zooming, reset, layer information, label character, drawing label, length measurement, angle measurement, rectangular length, rectangular area, elliptic length, elliptic area.
- ★ Algorithms for image optimization according to different physiological structures and parts of the body
- ★ Dicom Image Transmit, Dicom Image Storage, Dicom Image viewing, Dicom Image printing.
- ★ Convenient to connect to the PACS system
- ★ Be equipped with 19" imported LCD high resolution medical monitor screen, the delicate and richness degree of image is far higher than the normal medical monitor. International advanced level.
- ★ Brightness and Contrast are higher than 1000NIT, far higher than the normal LCD screen of 400 NIT.
- ★ These features can make the doctor diagnose more accurate and smooth.
- ★ Be equipped with the microphone and remote exposure control. The doctor can control outside the operating room.
- ★ Be equipped with various set of infrared facilities to protect the machine from the mis-operation of the doctors.
- ★ Generator parameter management, Remote control the parameter of X-ray machine to expose.
- ★ Number of predefined anatomical programs; More than 200,000

Big size touch screen on the tube

1. The display screen is synchronized with the workstation, and the operator can create a new inspection item in the computer room, which is convenient for the doctor's daily inspection and emergency.
2. Touch screen to set IMAGE and X-RAY interface. In the IMAGE interface, SID stretching range, exposure parameters, x-beam size, head rotation angle, body shape, acute Choice of diagnostic tests.
3. The X-RAY interface can display still images after filming, without the need for operators to move back and forth between the machine room and the console.



<i>No.</i>	<i>Item</i>
1	Control Console
2	HF HV generator
3	X-ray tube assembly
4	Collimator
5	Radiography Table
6	Bucky Stand
7	Flat Panel Detector
8	Image acquisition Workstation
9	Display
10	Cables etc accessories