

IMPORTANT

Before using the appliance

For safety reasons, the instructions should be read before the freezer is commissioned.

The operating instructions should always be available to and accessible for the personnel!

The appliance concerned complies with the below Directives and standards except as refrigerant amount.

Low Voltage Directive 2006/95/E.E.C.

Electromagnetic Compatibility Directive 2004/108/E.E.C.

Only use the freezer for its specific purpose.

Safeguarding the environment

1. Packing.

The packing material is entirely recyclable, and marked with recycling symbol.

Please follow the local regulations for scrapping.

2. Appliance.

The freezer is made of recyclable material. Dispose of the appliance should be according with the local environmental regulations

Make the appliance unusable by cutting of the power supply cord and please the appliance must be delivered to an authorised centre for recovery of refrigerant.

Information

This appliance contain a mixture of different refrigerant. For more information, please refer to the rating plate affixed on the freezer.

Precautions and general recommendations:

WARNING: Keep ventilation openings, in the appliance enclosure or in the built-in structure, clear of obstruction

WARNING: Do not use mechanical devices or other means to accelerate the defrosting process, other than those recommended by the manufacturer.

WARNING: Do not damage the refrigerant system.

WARNING: Do not use electrical appliances inside the appliance storage compartment, unless they are of the type recommended by the manufacturer.

- Always keep the keys in separate place and out of reach of children.
- Before servicing or cleaning the appliance, unplug it from the mains or disconnect the electrical power supply.
- The power supply cable may only be replaced by an authorised person.
- Frost formation on the interior wall and upper parts is a natural phenomenon, and therefor the freezer should be defrosted during normal cleaning or maintenance.

Appliance with flammable refrigerant:

As the appliance contain a mixture of refrigerant, which are flammable, it is essential to ensure that the refrigerant pipes are not damaged.

Operating Instructions

Ultra Low Temperature Freezing Box

For safety reasons, these operating instructions should be read before the freezer is commissioned. The operating instructions should always be available to the personnel!

The drawings and symbols in these operating instructions are for safety purposes when commissioning and using the freezer.

Instruct the personnel in the use of the freezer (Can be down to -86°C). There is a risk of frost-bite if the contents or the sides of the inner container are touched!

In the event of breakdown or irregularities contact professional instructors or repair technicians immediately.

Installing the freezer

1. Connect the plug from the unit to power. If the electrical connection (the plug) has to be changed, always let an authorised electrician install the freezer (read the operation instructions).
2. The freezer should be located in a dry, cool place without direct sunlight. The freezer gives off a great deal of heat when in operation. If the ambient temperature is too high, there is a risk that the freezer will not operate correctly. It is recommended that the room is ventilated, so that the room temperature does not exceed 25°C at most. Class N.
3. Place the freezer on a solid and flat substrate. This will eliminate any vibration and irritating noise. The freezer should be placed with at least 10 cm. free to the sides, at least 15 cm. free at the back, and at least 10 cm. free to the ceiling.
4. The unit is equipped with battery backup for display and contact for remote monitoring only. Backup time is min. 48 hours, the freezer must be connected voltage in min. 72 hours before max. battery is available. Please note the lifetime of the battery is estimated to be 3 years. But should be checked by authorize personnel every 6. month.

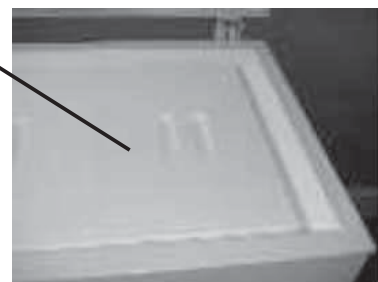
The installation should be fused with a 10 A fuse.

SUB LIDS:

The sub lids should be used at all times.

The Manufacturer is not responsible for damages to the freezer caused by a failure to do so.

Sub lid



Electrical connection:

The machine meets current EU directives. Low voltage 2006/95/E.E.C.

Electromagnetic compatibility 2004/1008/E.E.C.

The machine should be given extra protection in accordance with the Electricity Supply Regulations in order to protect the user against dangerous electric shock in the event of faults.

If the switch is for a 3-pin plug, a 3-pin plug should be used, and the conductor with yellow/green insulation should be connected to the Earth terminal.

Data regarding voltage and absorbed power/current are given on the rating plate on the rear side of the freezer.

Electrical connection must be made in accordance with the local regulations.

WARNING

Regulations require that this appliance must be earthed:

The manufacturer declines all liability for injury to persons or animals and for damage to property resulting from failure to observe the above procedures and reminders.

If the socket and plug are not of the same type, please have the plug or socket replaced by a qualified electrician.

Do under no circumstances use extension leads or adaptors.

1. The freezer should be connected by an authorised electrician or by the company, which sold the freezer! Incorrect installation may damage the freezer.
2. Place the freezer on a flat floor, which can take the weight of the freezer.
3. The electrical installation should be earthed.
4. Do not use extension cables, but connect the freezer directly to a fixed installation.
5. The freezer should be placed in a dry location, and should not be subjected to water on the cabinet. If water gets into the electrical parts it may cause short-circuiting.
6. In the event of functional or electrical irregularities, please contact an authorised servicing engineer.

Before Commissioning

Clean the freezer both inside and out using a damp, wrung out cloth. Dry with a dry cloth.

The smell from the plastic parts in the freezer will disappear once the freezer has been cooled down.

Start procedure

Put the plug in the socket.

If the battery voltage is low it will take about 2h before the compressor starts.

The thermostat was pre-set by the producer. The freezer should run for at least 6 hours before the thermostat is changed (Stabilisation of the cooling system).

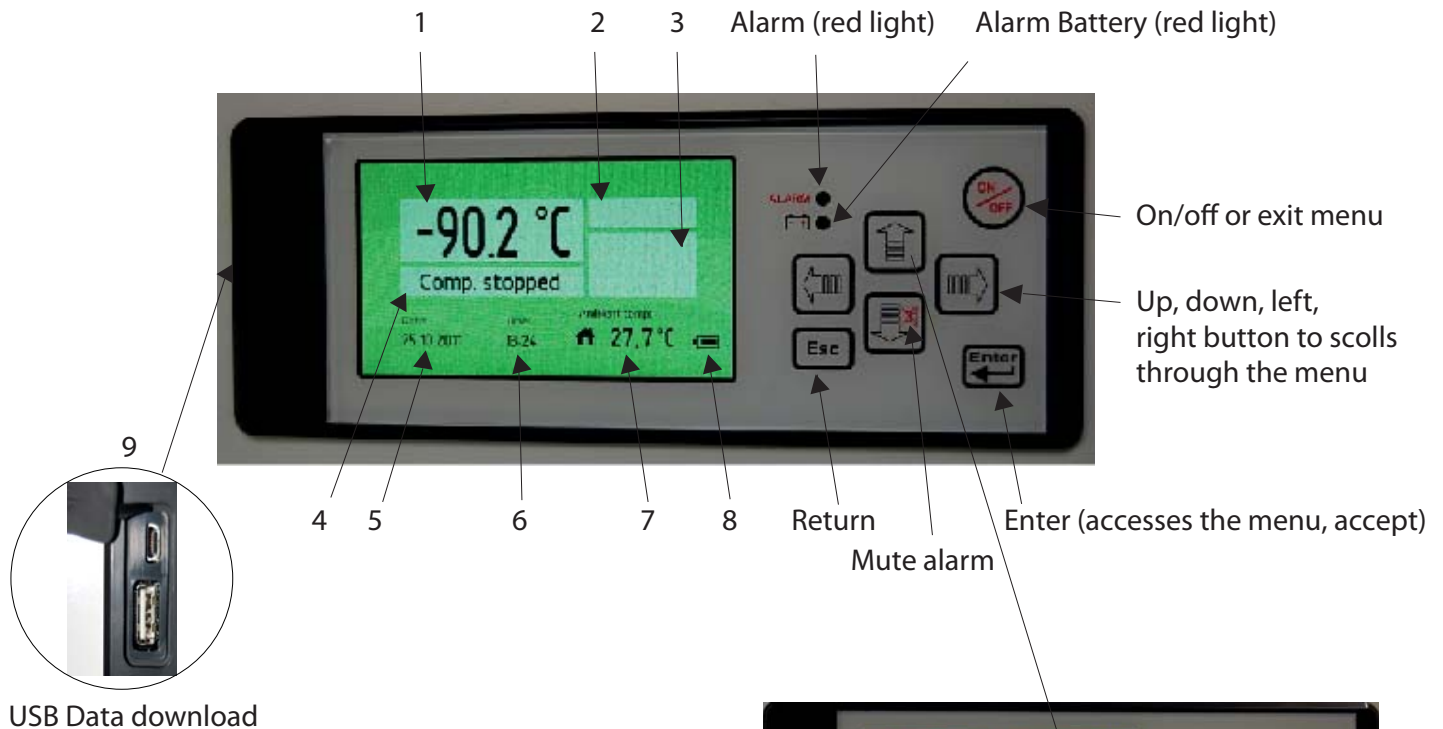
Starting up the freezer

Start the freezer. Set the digital thermometer at the temperature required. It will now take about 6-10 hours before the set temperature is reached. The freezer should be cooled down without anything in it.

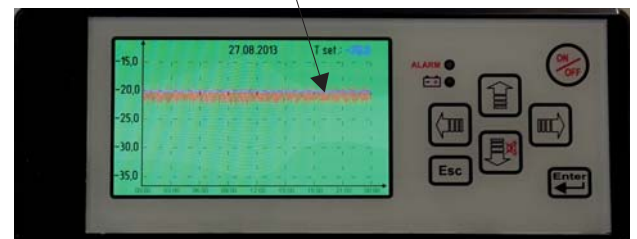
Disconnecting the appliance

Electrical disconnecting must be possible either by unplugging the appliance or by means of a double pole switch located up-line from the socket.

Control Panel (G-214 Controller)



USB Data download



Control Panel Description

1. Temperature indicator
2. Alarm indicator
3. Alarm-icons
4. Compressor indication
5. Date indication
6. Hour indication
7. Ambient temperature indicator
8. Battery level
9. USB-Connection

Push the **UP** button in order to generate a graph.

Push the **LEFT** button in order to return up to 10 days back.

Push the **Esc** button in order to exit the menu.