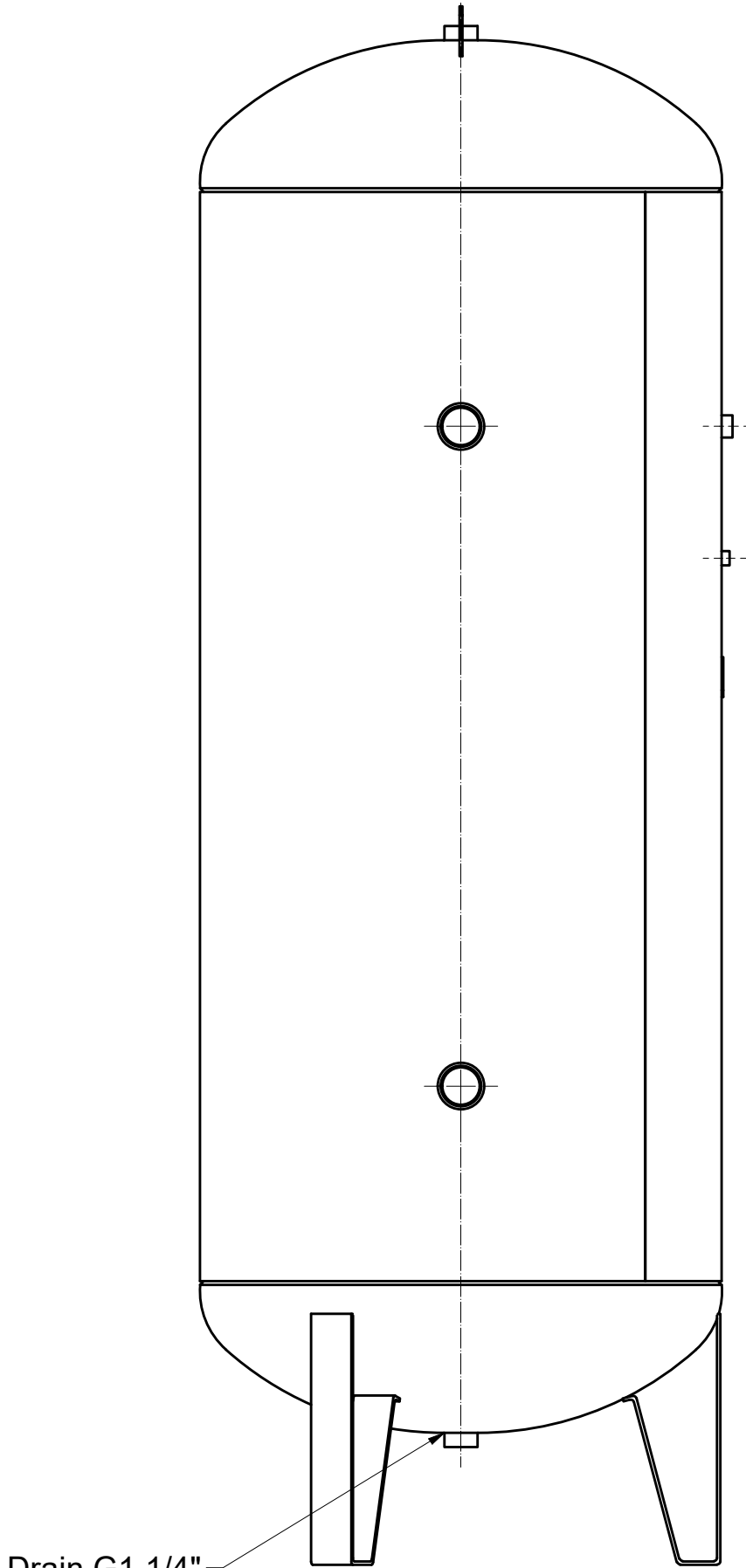
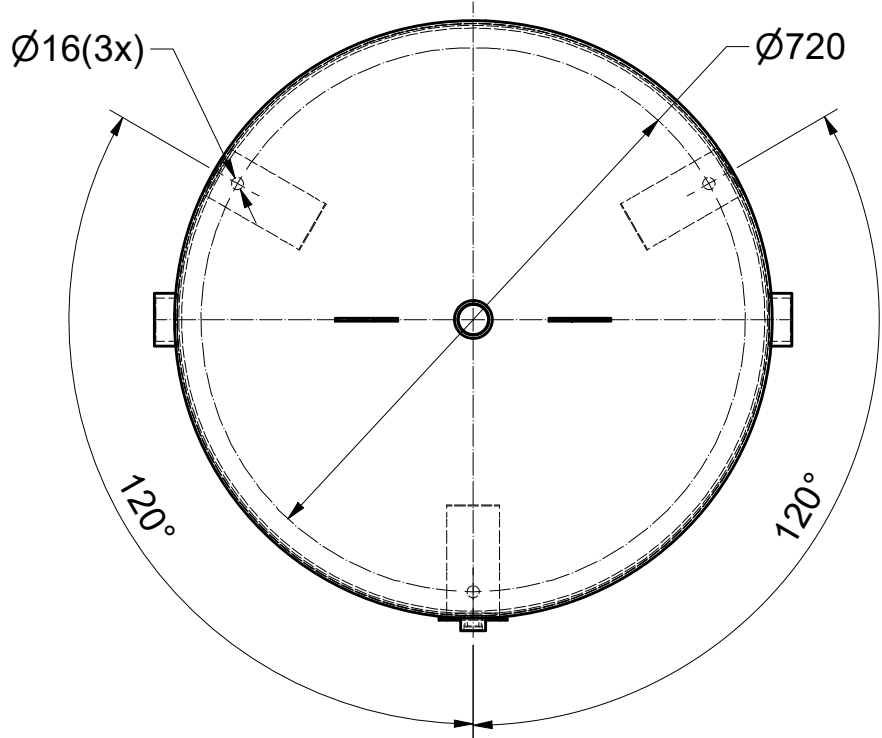
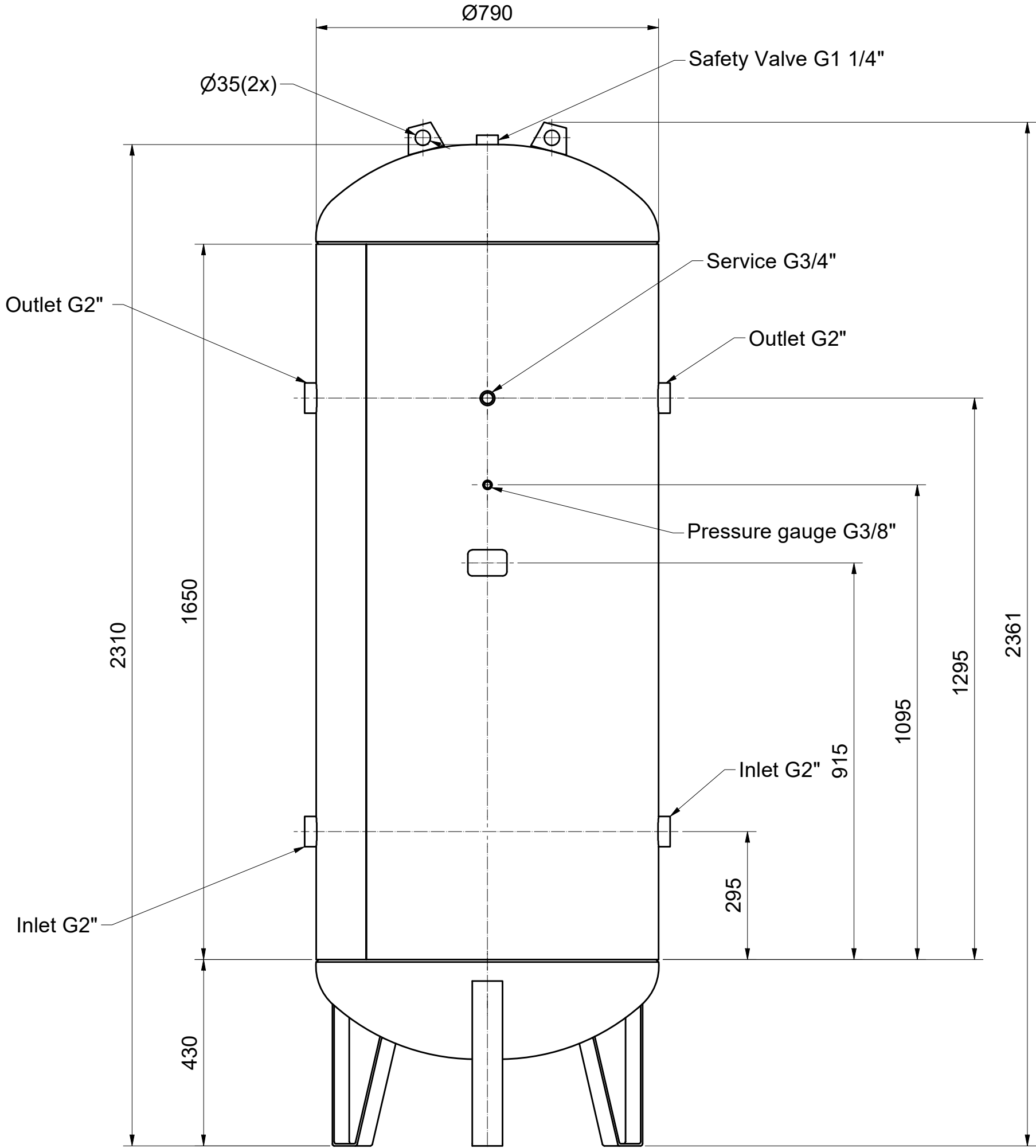


All materials supplied are in compliance with the requirements of the List of Prohibited Substances

CONFIDENTIAL:
This document is our property and shall not without our permission be altered, copied, used for manufacturing or communicated to any other person or company.

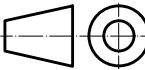
1				
Ed	Position	Modified from	Date	Intr./Appd.



- Notes:-
- Suited for oxygen use according to specification 9828 5303 00.
 - External treatment: painted RAL 7047.
 - Internal treatment: VITROFLEX coating.
 - Weight : 204 kg.

Designed, built, tested, certified and marked according European Directive: 2014/68/EU:		CAT IV
Medium	OXYGEN	
Design pressure	11,5 bar	
Min. Design temperature	-10 °C	
Max. Design temperature	120 °C	
Nominal Diameter (DN)	790	
Volume	1000 L	
Test pressure	16.5 bar	
Testing according SQA plan:	Sample test:	
	100% test:	X

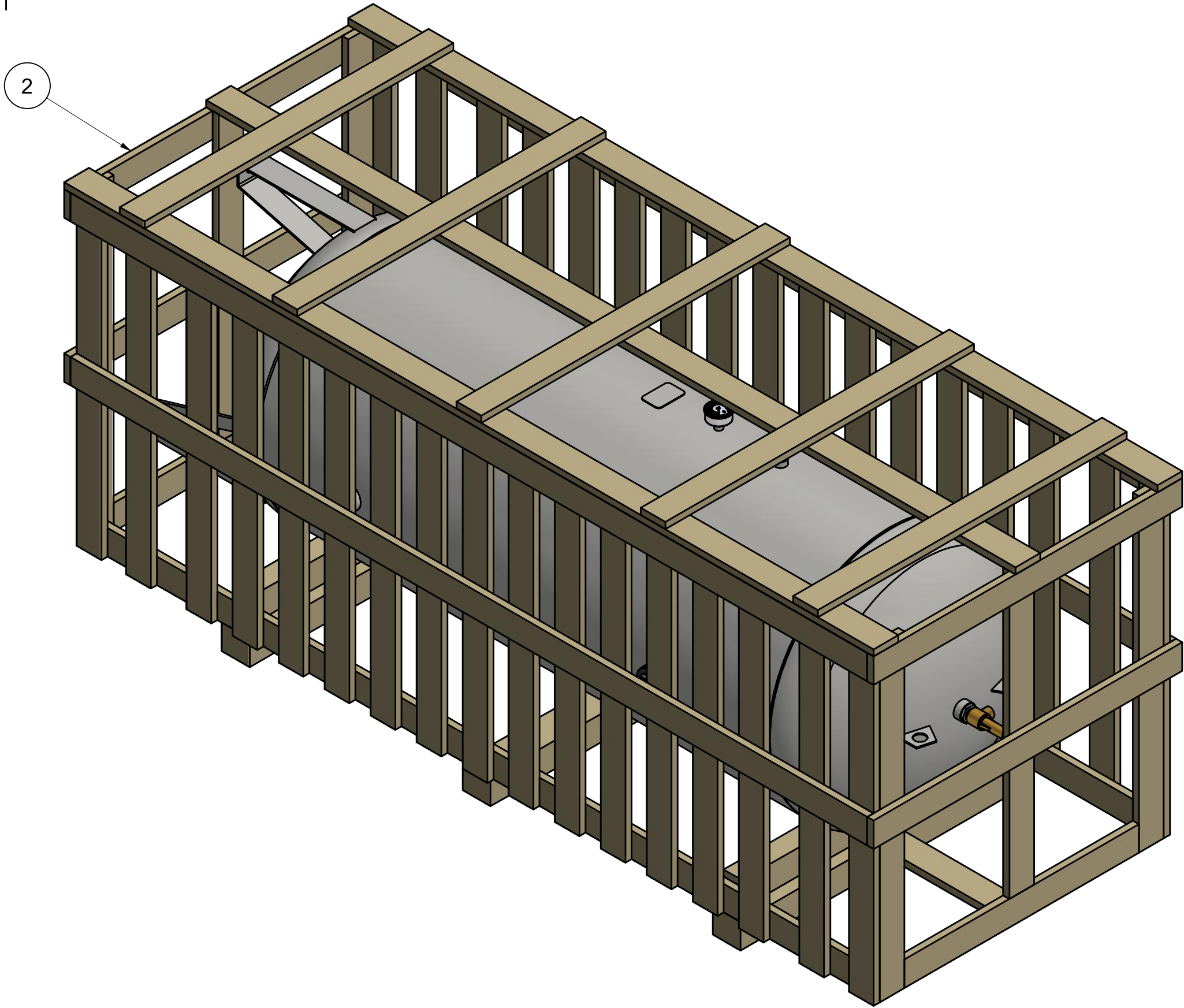
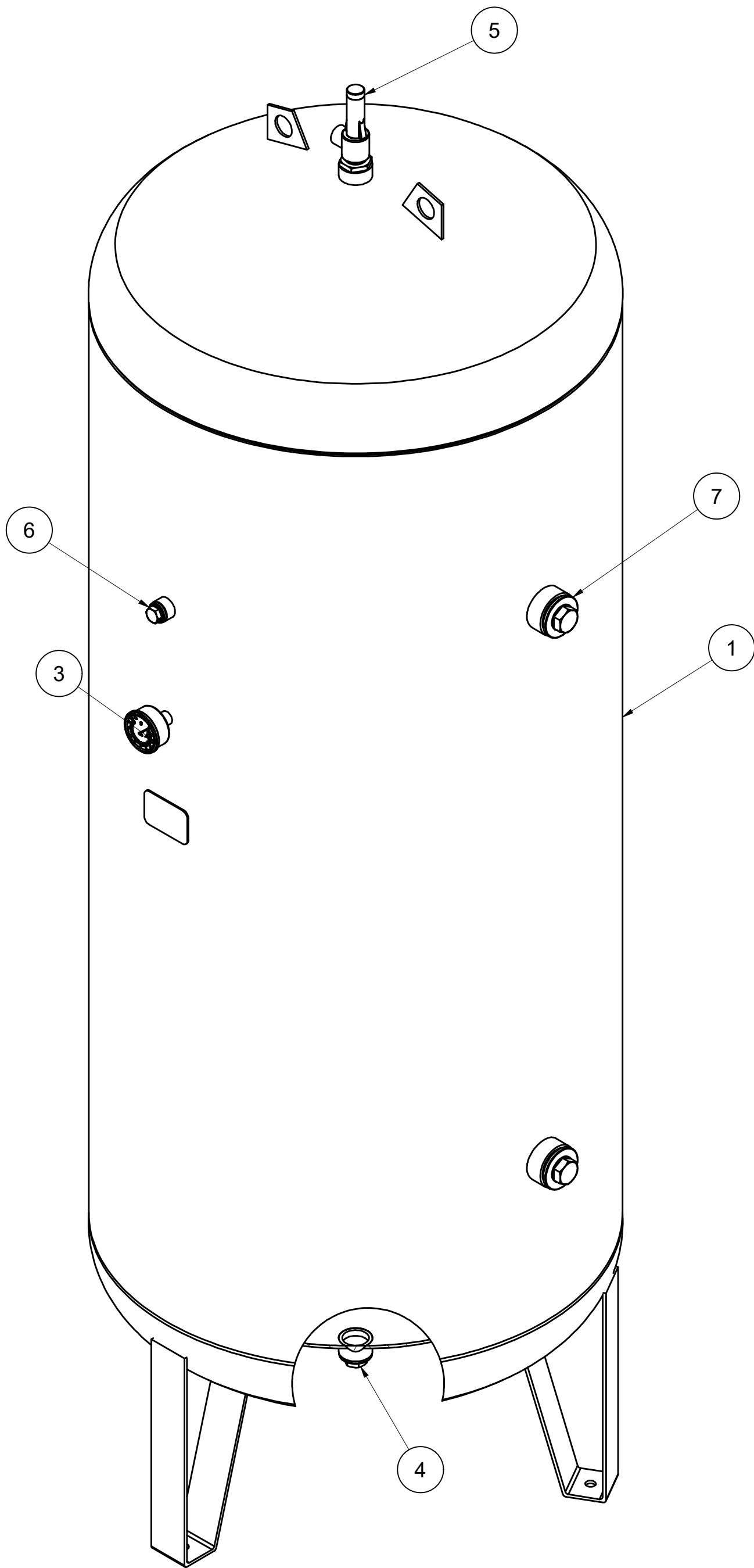
Tolerances, if not indicated, according to:					
ATLAS COPCO STANDARD CLASS					
Name	DIMENS. DRWG		LV1000 OXYGEN		Confidentiality Class acc. to 1102 K
Material	See Drawing				Confidential
Treatment	See Drawing				INV
	Scale	1 : 10	Family	A2 Compare	
	Drawn by	INEEXTVIP	Blank nr.	Replaces	
STATUS		Version Drwg	Blank wt	Kg	Finl wt. 160,623 kg
		Des checked.	Prod checked.	Approved.	Date 17/06/2021
Pending		Designation		Sheet 1 / 1	
1629240202-M1		1		1629240202-01	
Parent 3D model		Ed . Version 3D			




Drawing owner

API

All materials supplied are in compliance with the requirements of the List of Prohibited Substances



- Notes:-
- Suited for oxygen use according to specification 9828 5303 00.
 - Shipping weight : 255 kg.
 - Metal plugs to seal vessel from contamination during transport.

Parts List						
Pos	Qty	Partnumber	R/S	Name	Material	Description
1	1	1629240212	R	VESSEL AIR	See Drawing	LV1000 OXYGEN
2	1	1629240222	R	PACKAGING	See Drawing	LV1000 OXYGEN
3	1	0872100132	S	GAUGE PRESS	See Standards	PRESSURE GAUGE
4	1	0686420900	S	PLUG	See Standards	
5	1	0832100273	S	SAFETY VALVE	See Standards	
6	1	0686371662	S	PLUG	See Standards	
7	4	0686371673	S	PLUG	See Standards	
Tolerances, if not indicated, according to:						
ATLAS COPCO STANDARD CLASS						
Name		VESSEL AIR LV1000 OXYGEN ASSEMBLY			Confidentiality Class acc. to 1102 K	
Material		See Drawing			Confidential	
Treatment		Not Applicable			INV	
		Scale 1 : 5		Family		A2 Compare
		Drawn by INEEXTVIP		Blank nr.		
STATUS		Version Drwg		Blank wt Kg		Designation
Pending		Des checked.		Prod checked. Approved. Date 17/06/2021		
				255.000 kg		Sheet 1 / 1
						1629240212-01

CONFIDENTIAL:

This document is our property and shall not without our permission be altered, copied, used for manufacturing or communicated to any other person or company.

1				
Ed	Position	Modified from	Date	Intr./Appd.

1629240212-M1	1
Parent 3D model	Ed . Version 3D