

GreenLab
Endüstriyel Laboratuvar Sistemleri



Dünya Standartlarında Modern Laboratuvarlar

FUME HOOD 1500x750x2400h

Fume hoods are systems for safety of laboratory works with hazardous amount of gases, smoke, particle and liquid substances, Made from 1,2mm galvanised steel and coated with epoxy based electrostatic powder. So the body is very resistand to corrosion caused by chemical vapors. Greenlab Standard fume hoods are designed for ergonomic usage needs for chemical works with high concentration and low corrosive chemicals. Greenlab fume hoods manufactured according to EN-14175 and ASHARE 110 Quality certificate

EU standards to increase performance and ensure health safety.

Owens CE certificate for user and environment safety.

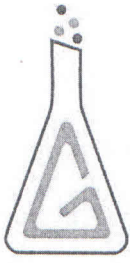
Drainage management systems is offered optionally.

Fume hood lower cupboard changes according to user needs.

- Standard Chemical storage cupboard

Technical Information

Dimensions	
Width (mm)	1500
Depth (mm)	750
Height (mm)	2400
Worktop Length (mm)	1100
Worktop Width (mm)	700
Interior Height (mm)	1100
Work Bench Height (mm)	900
	<p>GREENLAB ENDÜSTRİYEL LAB. SİSTEMLERİ SAN. VE TİC. A.Ş. ŞTİ. Ömerli Mah. Tuzluca Ç. No: 18U Hacıosman / İSTANBUL Büyükdere Y. D. 411 040 6173 Tic. Sic. No: 883872</p>



GreenLab
Endüstriyel Laboratuvar Sistemleri



Dünya Standartlarında Modern Laboratuvarlar

Specifications

Sash	Safety Glass with Vertical Movement. Placed in an aluminum frame.
Construction	Galvanized Steel
Paint	Electrostatic Powder Paint
Working Surface	Solid Grade Laminate, (HPL 16 mm)
Fume Cupboard Foot	Chemical resistant foot that can counter ground slopes

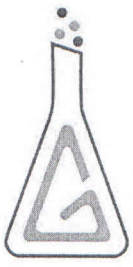
Electricity

Electrical Sockets	IP65 220V-16A Electrical Sockets
Fuse Box	16A
Lighting	Led Lighting
Controller	Manual control unit Lighting controller Fan speed controller
Fan	Three-phase snail type, Polypropylene body, 1900 m3/h capacity

Water and Gas Connections

Water Connections	Compliant with DIN 12898 Standard. Armatures and valves are compliant with EN 13792 and have color codes. Compliant with ISO228 / 1 Standard and B Tolerance Class. Manufactured in accordance with DIN 12918.
Sink	PP (Polypropylene) Sink
Gas Connections	Compliant with DIN 12898 Standard. Armatures and valves are compliant with EN 13792. Compliant with ISO228 / 1 Standard and B Tolerance Class. Manufactured in accordance with DIN 12918.

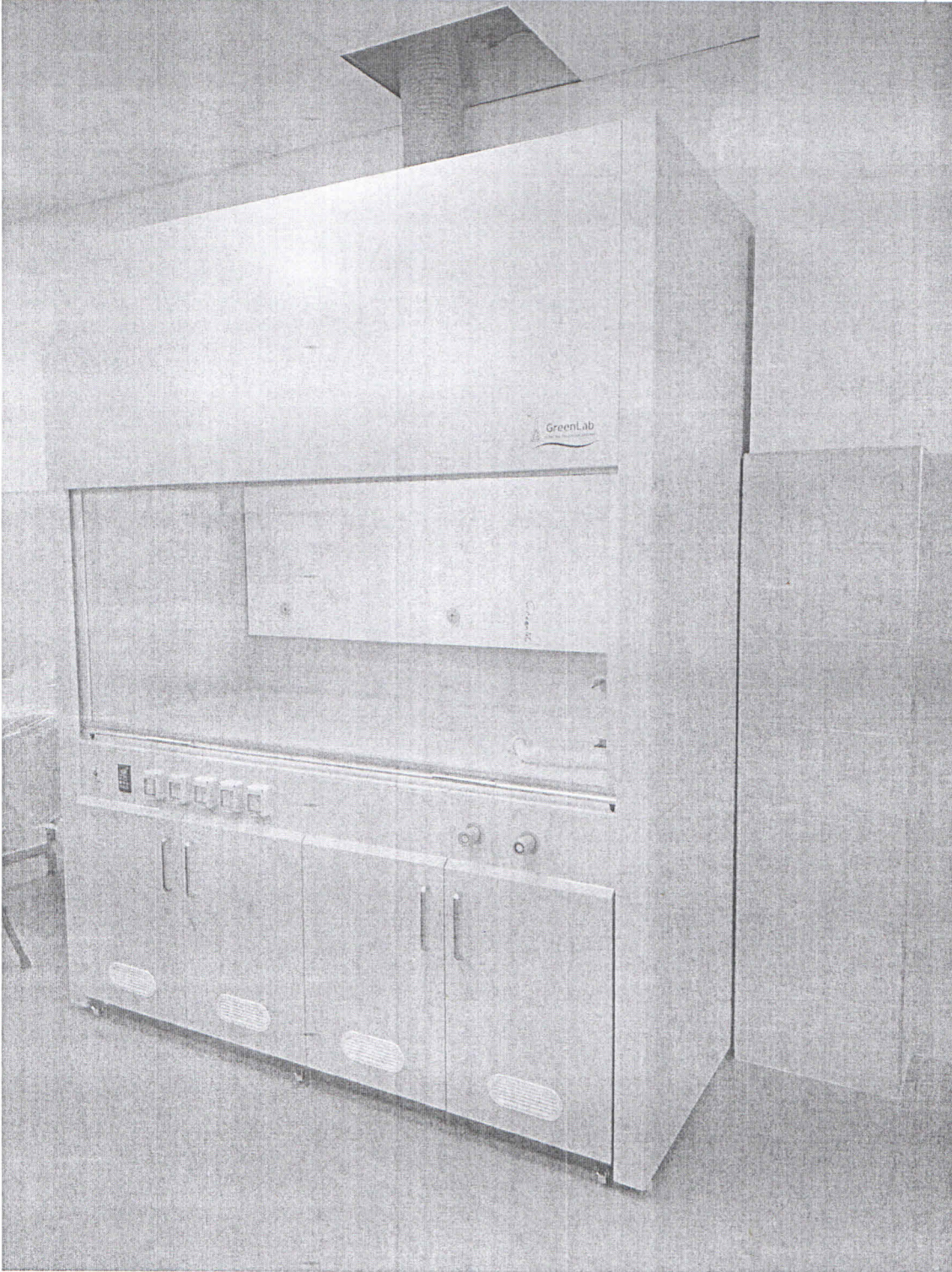
GREENLAB ENDÜSTRİYEL LAB.
SİSTEMLERİ SAN. VE TİC. LTD. ŞTİ.
Ömerli Mah. Tuzla Yolu No: 18U
Hadımköy / İSTANBUL
Büyükdere Caddesi No: 411 040 6173
Tic. Sic. No: 883872



GreenLab
Endüstriyel Laboratuvar Sistemleri



Dünya Standartlarında Modern Laboratuvarlar



GREENLAB ENDÜSTRİYEL LAB.
SİSTEMLERİ SAN. VE TİC. A.Ş. ŞTİ.
Ömerli Mah. Tuzluçay Sok. No: 19U
Hacım KÖYÜ İSTANBUL
Büyükdere Yolu 411 040 6173
T. 0212 992 972