

Carestream

DRYVIEW 5950 Laser Imager

# Powerful. Simple. Affordable.

PROVEN LASER MEDICAL PRINTING

## Exceptional Laser Printing for Mammography and More.

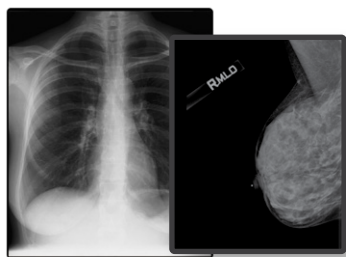
The CARESTREAM DRYVIEW 5950 Laser Imaging System is specifically designed for healthcare providers that require high diagnostic image quality at a low cost. With this easy-to-use, space-saving tabletop system, staff can count on legendary DRYVIEW quality backed by Carestream's world-class service and support.

The DRYVIEW 5950 Laser Imager is an ideal diagnostic tool for determining patient treatments as well as referral, sharing and educational purposes. It enables printing on all types of applications—Full-Field Digital Mammography (FFDM), CR-Mammography, Computed Radiography (CR), Digital Radiography (DR), Magnetic Resonance Imaging (MRI) and Computed Tomography (CT).



## Advantages At a Glance

- Ease of use—film loading and changing film sizes
- Accommodates two film sizes online
- Supports high-resolution mammography printing
- Small footprint—tabletop or with stand (country dependent)
- Automatic image quality monitoring



## Quality.

### Smart, High Resolution Medical Image Printing for Mammography

The DRYVIEW 5950 Laser Imager has built-in mammography features including the ability to print high film density in two film sizes, mammography specific test patterns and a Mammography Quality Control Manual.



## Flexibility.

### Easily Transition to Digital Radiography (DR)

When bundled with DRYVIEW Laser Imagers, the CARESTREAM Focus 35C Detector and Image Suite Software helps you transition to an affordable digital radiography solution quickly for wireless DR image capture, review, report and archive.



## Ease.

### Simple Daylight Loading

Replace an empty cartridge or switch to a new film size in 3 easy steps.

1. Ensure the pause symbol is off, open door and remove old film cartridge
2. Slide the new film cartridge into place
3. Close door and check screen to confirm status

## DRYVIEW 5950 Laser Imager Specifications

### Technology

- Photothermographic (dry laser)

### DRYVIEW Laser Imager quality

- True laser technology
- 508 laser pixels per inch
- 50 micron laser spot spacing
- 14-bit pixel depth architecture

### Throughput

- Capable of greater than 70 films per hour  
14 x 17 in. (35 x 43 cm)

*Network load will impact throughput of DRYVIEW 5950 Laser Imager*

### Dimensions

- Height: 26.2 in. (66.6 cm)
- Width: 24.6 in. (62.6 cm)
- Depth: 25.5 in. (64.9 cm)
- Weight: 175 lbs. (79 kg)

### Operating Environment

- Temperature: 59 to 91°F (15 to 33°C)
- Humidity: 20 to 80% RH, non-condensing
- Magnetic field: < 50 Gauss
- Altitude: -100 to 9,800 ft (-30 to 3,000 m)

### DRYVIEW Laser Imaging Film

- Blue 7-mil polyester base
- Daylight-load film cartridges (125 sheets)

### DRYVIEW Mammography Laser Imaging Film

- Daylight-load film cartridges (125 sheets)
- Enables higher Dmax images  
3.6 Dmax with DVM film  
4.0 Dmax with DVM+ film

### Choice of film sizes

- The DRYVIEW 5950 Laser Imager supports the following film sizes:  
14 x 17 in. (35 x 43 cm)  
11 x 14 in. (28 x 35 cm)  
10 x 12 in. (25 x 30 cm)  
8 x 10 in. (20 x 25 cm)

### Automatic image quality control (AIQC)

- Ensures consistency from film to film
- Automatic with no user intervention

### Power

- 100-120 VAC; 50/60 Hz
- 200-240 VAC; 50/60 Hz

### Network connectivity

- Integrated DICOM interface supports printing from DICOM print modalities
- CARESTREAM Smart Link remote technology

### Network connection

- 10/100/1000 Base-T Ethernet connection to imager
- Network connection via CAT5 UTP cable terminating in an RJ-45 plug

### User languages supported:

- |                        |                          |              |
|------------------------|--------------------------|--------------|
| • Chinese (Simplified) | • Greek                  | • Spanish    |
| • English              | • Italian                | • Turkish    |
| • French               | • Japanese               | • Russian    |
| • German               | • Polish                 | • Vietnamese |
|                        | • Portuguese (Brazilian) |              |

### Mammography

- User-selectable test patterns
- Key control charting parameters and values

carestream.com



"Rx only"

© Carestream Health, Inc., 2020. CARESTREAM and DRYVIEW are trademarks of Carestream Health. 4/20 Cat No. 400\_0119\_US



Carestream