

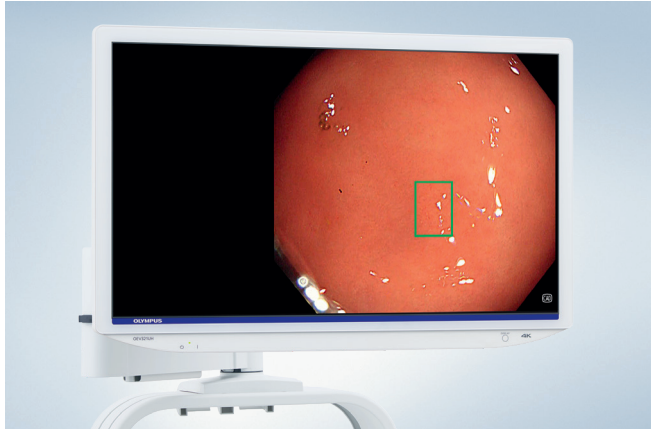
Endoscopy CAD System OIP-1

ENDO-AID

Welcome to the AI Future in Endoscopy



ENDO-AID is Olympus' Intelligent Platform, which can be seamlessly integrated into our latest EVIS X1 endoscopy system. It comes with ENDO-AID CADe, a high-performing computer-aided detection application for colonoscopy that uses artificial intelligence (AI) to suggest the potential presence of lesions.



ENDO-AID CADe can alert the endoscopist when a potential lesion appears, surrounding it with an intuitive marker.

Get into AI and Enjoy Its Many Benefits

- Comprehensive data corresponding to the NICE classification of type 0-II polyps leads to an overall improvement of detection performance and accuracy, including sensitivity to rare cases.
- By supporting the detection of potential lesions, the system aims to increase the adenoma detection rate (ADR).¹
- Real-time display: The system can alert abnormalities virtually in real time (no video delays).
- Physicians may be more confident during colonoscopies, thanks to additional support by AI.
- The system may contribute to the overall improvement of clinical outcomes, irrespective of operator experience.
- Thanks to the auto-freeze feature, the detected lesion remains on the sub-image screen last, allowing the user to check the subimage at his/her convenience, reducing stress and eye fatigue.

Product Specifications

OIP-1

Compatibility	Compatible Processor	CV-1500 *1
	Compatible Scopes	Colonovideoscope (1500/1200/1100/290/190/185 series), Enteroscope (SIF-H190, PSF-1)
Size	Dimensions	W370×H85×D444 / W390×H87×D467 (Maximum)
	Weight	Approx.10 kg
Power Supply	Power Rating	Less than 275 VA, 100-240 VAC ±10%, 50/60 Hz
Connection	Memory	Front: 1× portable memory
	Function	Colon CADe
Observation	Input/Output	In: SDI (1080p/4k) ×1 Out: SDI (1080i/1080p/4k) ×2
	Frame Rate	50fps, 59.94fps *2
	Compatible Recording Device	IMH-200, IMH-20, IMH-10
	Compatible Observation Mode	WLI, TXI
	Sub Image	On (large/small), off
	Display Mode	Normal mode, target mode
	Remote Control	"CUSTOM" key on the keyboard, remote switch on the endoscope, remote switch on the foot switch and custom button on the touch panel of the video system center
Classification (Medical Electrical Equipment)	Type of Protection against Electric Shock	Class I



¹ Wong YT, Tai TF, Wong KF, et al. The study on artificial intelligence (AI) colonoscopy in affecting the rate of polyp detection in colonoscopy: A single centre retrospective study. Surg Pract. 2022;1 5. doi:10.1111/1744- 1633.12559

² EVIS X1 VIDEO SYSTEM CENTER OLYMPUS CV-1500

³ Frame rate depends on region

As medical knowledge is constantly growing, technical modifications or changes of the product design, product specifications, accessories and service offerings may be required.