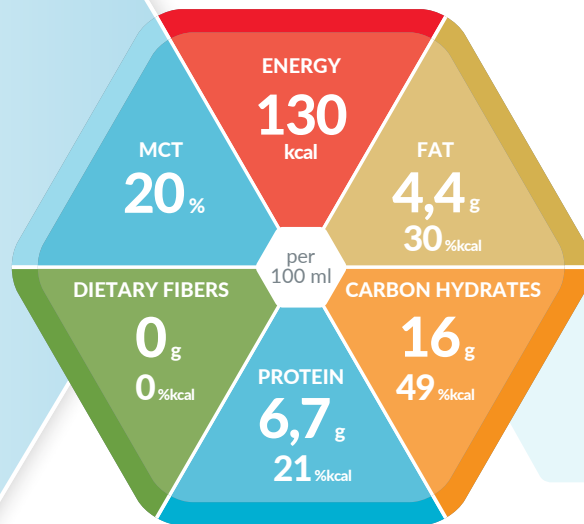




SmartFlex[®]



PROTEIN AND ENERGY-RICH TUBE FEEDS

Product Properties

- High caloric (1.3 kcal / ml)
- High in protein (21% kcal)
- Without dietary fiber
- Lactose-free (< 0.05 g / 100 ml)
- Soy and gluten free

Indications

- To meet increased protein and / or energy requirements in the absence or limited ability to provide adequate normal nutrition
- In case of imminent or existing malnutrition especially in case of increased protein requirement e.g. wound healing disorders, metabolic stress, trauma, after operations, for oncological and / or geriatric patients

Dosage

- **For exclusive nutrition:**
1,500 to 2,000 ml per day (3 - 4 SmartFlex[®])
- **For supplemental nutrition:**
≥ 500 ml per day or as directed by a physician

Storage

Store unopened in a cool, dry place. If using the spike or universal adapter, apply within 24 hours. Re-seal opened SmartFlex[®], store in refrigerator and use within 24 hours.

Special Instructions

Use under medical supervision

- Not suitable for children under 3 years of age
- Do not mix with other food or add to medications
- Not for parenteral use
- Packed under protective atmosphere
- Food for special medical purposes (balanced diet)

List of Ingredients

Water, maltodextrin, milk protein, vegetable oils (canola oil, sunflower oil), medium chain triglycerides, minerals (potassium phosphate, calcium citrate, potassium citrate, sodium citrate, potassium chloride, magnesium citrate, sodium chloride, calcium phosphate, ferrous lactate, zinc sulfate, copper gluconate, manganese sulfate, sodium fluoride, sodium selenite, chromium chloride, sodium molybdate, potassium iodide), emulsifier (E472c, E471), fish oil, stabilizer (E460, E466, E407), choline bitartrate, vitamins (C, E, niacin, pantothenic acid, B6, thiamin, A, riboflavin, B-carotene, folic acid, D, B12, K, biotin), antioxidant (E304).

Allergens: Fish, milk.

Nutritional Information

Isosource® Protein Fibre		100 ml
ENERGY:	kcal	130
	kJ	549
Fat , of which	g	4.4
	% kcal	30%
– Saturated fatty acids	g	1.3
– MCTs	g	0.88
– Monounsaturated fatty acids	g	2.1
– Polyunsaturated fatty acids	g	1.0
– Omega-3	g	0.18
– Omega-6	g	0.72
Carbohydrates , of which	g	16
	% kcal	49%
– Sugars	g	1.4
– Of which lactose	g	< 0.05
Dietary fiber	g	0
	% kcal	0%
– Dietary fiber source		–
Protein	g	6.7
	% kcal	21%
Protein source		casein
MINERALS:		
Sodium	mg	90
	mmol	3.91
Potassium	mg	150
	mmol	3.85
Chloride	mg	70
	mmol	1.97
Calcium	mg	100
	mmol	2.5
Phosphorus	mg	75
	mmol	2.42
Magnesium	mg	12
	mmol	0.5
Iron	mg	1.2
Zinc	mg	1.2
Copper	mg	0.17
Manganese	mg	0.30
Fluoride	mg	0.16
Selenium	µg	8.5
Chromium	µg	11
Molybdenum	µg	13
Iodine	µg	19
VITAMINS:		
Vitamin A	µg RE	140
Vitamin D	µg	1.8
Vitamin E	mg	2.0
Vitamin K	µg	9.0
Vitamin C	mg	14
Thiamine	mg	0.19
Riboflavin	mg	0.23
Niacin	mg NE	2.5
B ₆	mg	0.25
Folic acid	µg	37
B ₁₂	µg	0.60
Biotin	µg	5.8
Pantothenic acid	mg	0.72
Choline	mg	50
Osmolarity	mOsm/l	283
Water content	g	81

RE = retinol equivalent; NE = niacin equivalent; * IS50: 50% soluble and 50% insoluble dietary fiber: Pea fiber, acacia gum, fructo-oligosaccharides, inulin.

Nutrients

FAT:

The fat content consists of nutritionally superior vegetable oils (canola and sunflower oils), medium chain triglycerides (MCT) and fish oil. The MCT content in the fat is 40%.

	in % of total fat	g / 100 ml
Saturated fatty acids, of which	32	1.4
– MCT	20	0.88
Monounsaturated fatty acids	45	2
Polyunsaturated fatty acids, of which	23	1
– Omega-3 fatty acids	4	0.18
Ratio omega-6 : omega-3	4.1 : 1	

CARBON HYDRATES:

The main ingredient is **maltodextrin**.

	in % of total carbohydrates	g / 100 ml
Oligo- and polysaccharides	91	14.5
Sugars (mono- and disaccharides)	9	1.5
Lactose	–	< 0.05

DIETARY FIBERS:

Isosource® Protein is free of dietary fiber.

PROTEIN:

The protein component in Isosource® Protein consists of high-quality milk protein (caseinate).

MINERALS AND VITAMINS:

The daily requirement of micronutrients (vitamins and minerals) is covered from 1,500 kcal.