

PRODUCT DATA SHEET – WPC/WPF

Section 1. PRODUCT DESCRIPTION

FLANGE HEAD SELF-TAPPING SCREW – WPC/WPF

Flange head self-tapping screw WPC/WPF is made of heat-treated carbon steel with galvanized zinc coating 5 µm (WPC) or phosphate coating (WPF). The screw has flange head which increases the pressure area and self-tapping tip which makes fixing in steel members easier and faster.

Use:

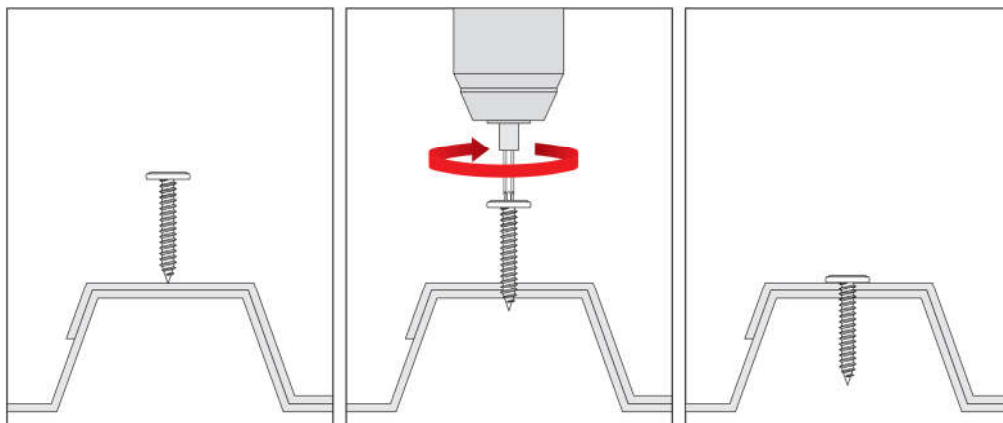
- flashings
- making lap joints in steel sheets



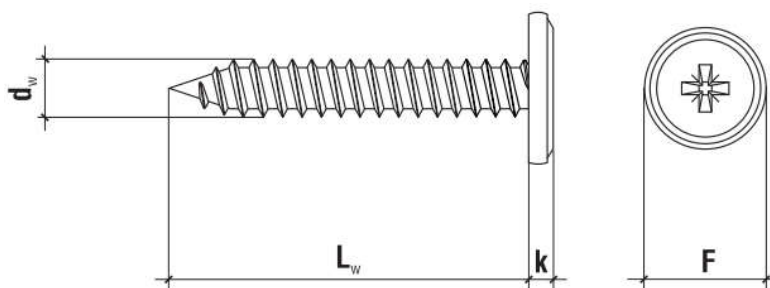
Self-tapping screws conform to: PN-EN 14566+A1:2010

Section 2. METHOD OF INSTALLATION

1. Original self-tapping screws delivered by the manufacturer can be used only
2. Before installation identify the substrate, its thickness and environmental conditions (expressed as corrosivity categories), and then select screws which meet the above criteria
3. Correctly select screw type, its length, drilling capacity depending on sum of thickness values of members being fixed
4. Drilling capacity for each screw is given in corresponding Product Data Sheet and PN-EN standard, and stands for the sum of thickness values of members being fixed
5. Make sure to set optimum rotary speed when screwing
6. At all times screws should be installed perpendicularly to the substrate surface



Section 3. TECHNICAL DATA



PRODUCT DATA SHEET – WPC/WPF

TECHNICAL PARAMETERS		
Parameter	Unit	Value
Screw diameter	d_w [mm]	4,2
Drilling capacity	Σt_i [mm]	≤ 2
Drive type	S [mm]	PH-2
Head height	k [mm]	2,3
Head diameter	F [mm]	11,0
Tip length	[mm]	-
Screw material	-	carbon steel
Corrosion protection	WPC	galvanized zinc coating 5 μ m
	WPF	phosphate
Substrate material	-	steel \geq S235JR
Standard	-	PN-EN 14566+A1:2010

INSTALLATION PARAMETERS		
Parameter	Unit	Value
Screw diameter	d_w [mm]	4,2
Diameter of hole in the substrate	d_0 [mm]	-
Min. depth of hole in the substrate	h_0 [mm]	-
Anchorage depth	h_{eff} [mm]	push-through
Min. substrate thickness	h_{min} [mm]	0,5
Min. spacing	s_{min} [mm]	50
Min. distance from edge	c_{min} [mm]	25

SELECTION TABLE				
WPC (galvanized zinc coating ZN)	WPF (phosphatized FS)	Screw dimensions	Max. usable length	Number of pieces in a box
		$d_w \times L_w$ [mm]	t_{fix} [mm]	[pcs]
WPC-42013	WPF-42013	4,2 x 13	10	1000
WPC-42016	WPF-42016	4,2 x 16	13	1000
WPC-42019	WPF-42019	4,2 x 19	16	1000
WPC-42025	WPF-42025	4,2 x 25	20	500
WPC-42032	WPF-42032	4,2 x 32	25	500
WPC-42040	WPF-42040	4,2 x 40	35	400
WPC-42050	WPF-42050	4,2 x 50	45	300
WPC-42065	WPF-42065	4,2 x 65	60	250

Section 4. REMARKS

1. All previous versions of this Product Data Sheet shall cease to be valid
2. Data given in this Product Data Sheet is in accordance with current knowledge and published in good faith. KLIMAS Sp. z o.o. is not responsible for correctness and quality of the fixing if recommendations regarding method of use and installation are not followed.