

**OUTDOOR PHOTOMETRIC REPORT**

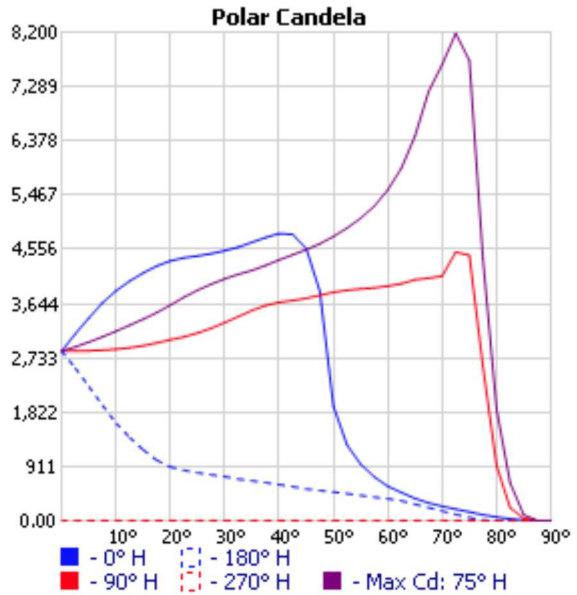
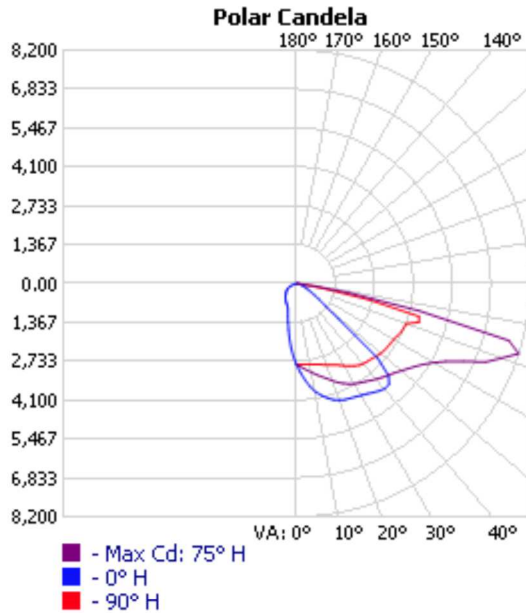
CATALOG: 130222.7L102.991.003



Manufacturer: LUG LIGHT FACTORY  
 Test #: 13145  
 Test Date: 20-03-2024  
 Catalog: 130222.7L102.991.003  
 Description: URBINO LED ED D4i 11200lm/740 O28 gray II kl. mod. 003  
 Lamp Catalog: LED 4000K  
 Lamp Output: 1 lamp, rated Lumens/lamp: 11200  
 Input Wattage: 80  
 Luminous Opening: Rectangle (L: 0.22M, W: 0.19M)  
 Max Cd: 8,185.2 at Horizontal: 75°, Vertical: 72.5°  
 CUTOFF CLASS: Semicutoff  
 Roadway Class: MEDIUM, TYPE II  
 Efficiency: 62.3%

No  
Photo  
Available

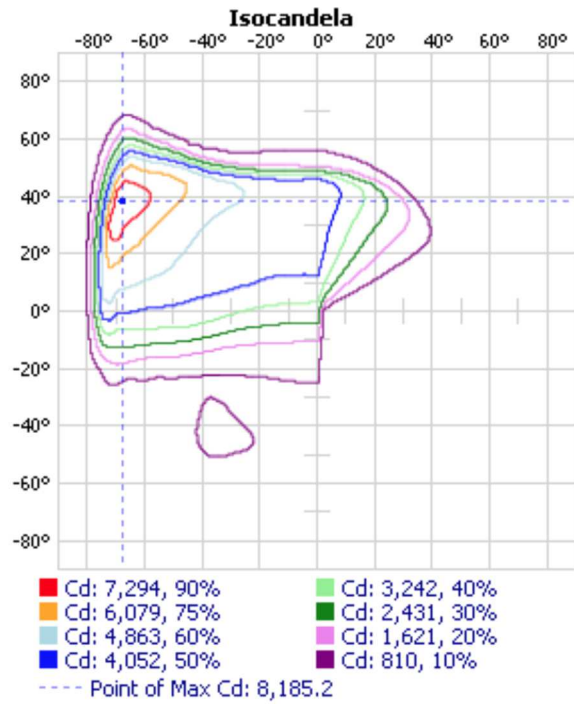
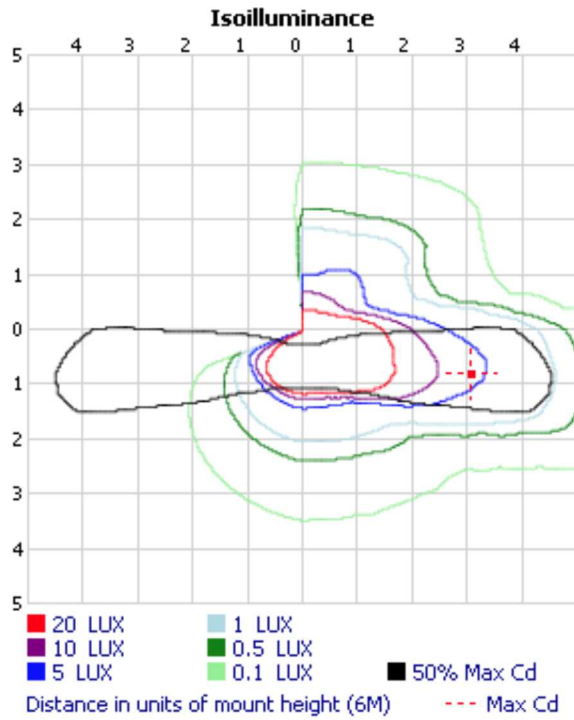
See report notes \*\*



\*\*File does not include sufficient vertical data to properly calculate BUG and LCS upright.  
 \*\*File does not include upper hemisphere data(90-180) and has Cd > 0 at 90° vertical.

Visual Photometric Tool 1.2.46 copyright 2024, Acuity Brands Lighting.

This Photometric report has been generated using methods recommended by the IESNA. Calculations are based on Photometric data provided by the manufacturer, and the accuracy of this photometric report is dependent on the accuracy of the data provided. End-user environment and application (including, but not limited to, voltage variation and dirt accumulation) can cause actual Photometric performance to differ from the performance calculated using the data provided by the manufacturer. This report is provided without warranty as to accuracy, completeness, reliability or otherwise. In no event will Acuity Brands Lighting be responsible for any loss resulting from any use of this report.



**Zonal Lumen Summary**

Zone	Lumens	% Lamp	% Luminaire
0-30	1,457.9	13%	20.9%
0-40	2,541.5	22.7%	36.4%
0-60	5,156.9	46%	74%
60-90	1,816.6	16.2%	26%
0-90	6,973.5	62.3%	100%

**Lumens Per Zone**

Zone	Lumens	% Total
0-10	169.8	2.4%
10-20	493.2	7.1%
20-30	794.9	11.4%
30-40	1,083.6	15.5%
40-50	1,348.3	19.3%
50-60	1,267.2	18.2%
60-70	1,089.1	15.6%
70-80	678.3	9.7%
80-90	49.2	0.7%