

BMI® Medical

Shunting System



BMI® Medical

Ventricular Catheter 06118, 06118S

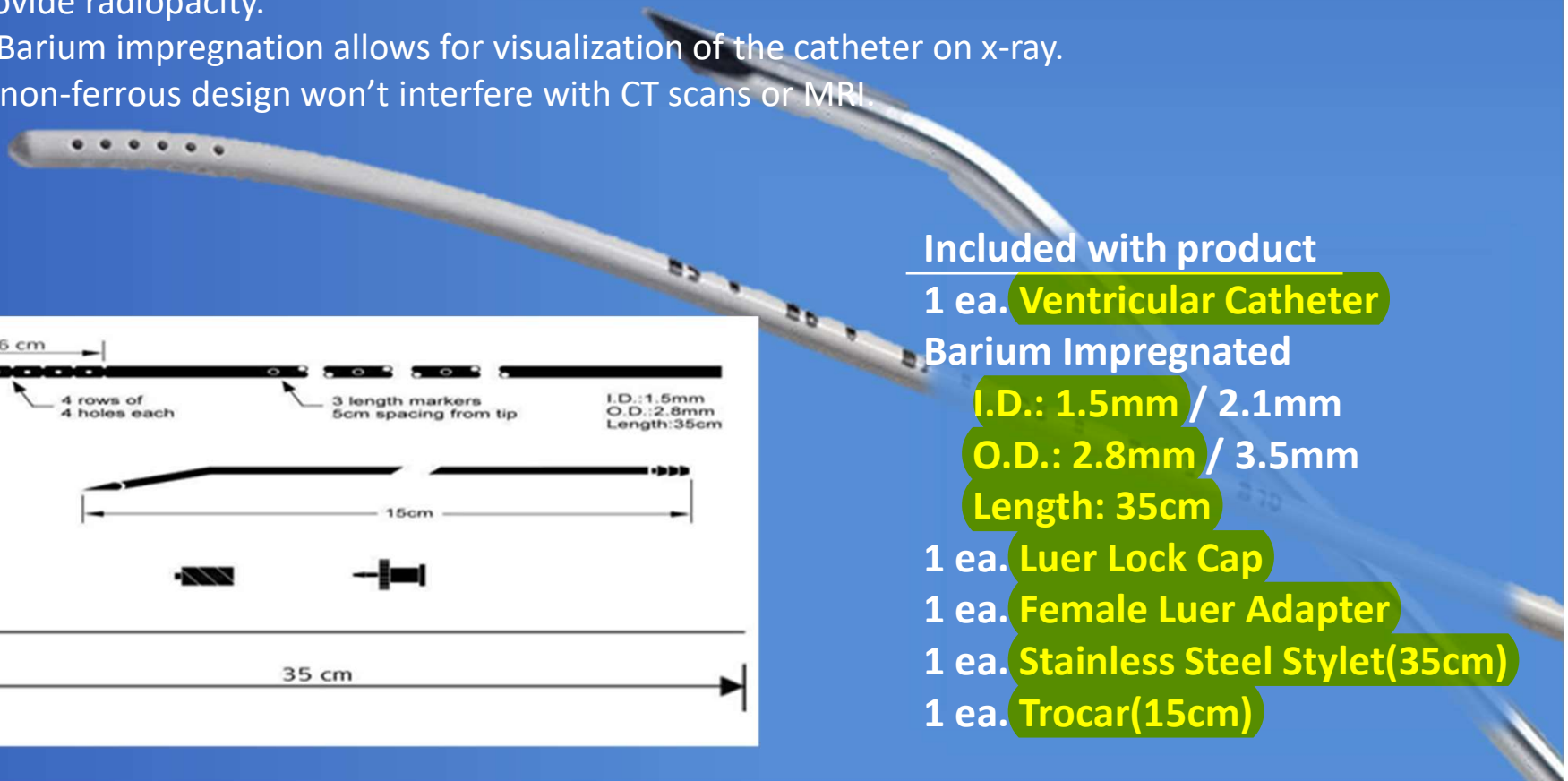
Barium impregnated silicone catheter.

Kink and compression resistant.

Stainless steel stylet allows catheter to be directed during catheter placement.

The catheter is fabricated from silicone elastomer tubing impregnated with barium to provide radiopacity.

- Barium impregnation allows for visualization of the catheter on x-ray.
- non-ferrous design won't interfere with CT scans or MRI.



Included with product

1 ea. **Ventricular Catheter**
Barium Impregnated

I.D.: 1.5mm / 2.1mm

O.D.: 2.8mm / 3.5mm

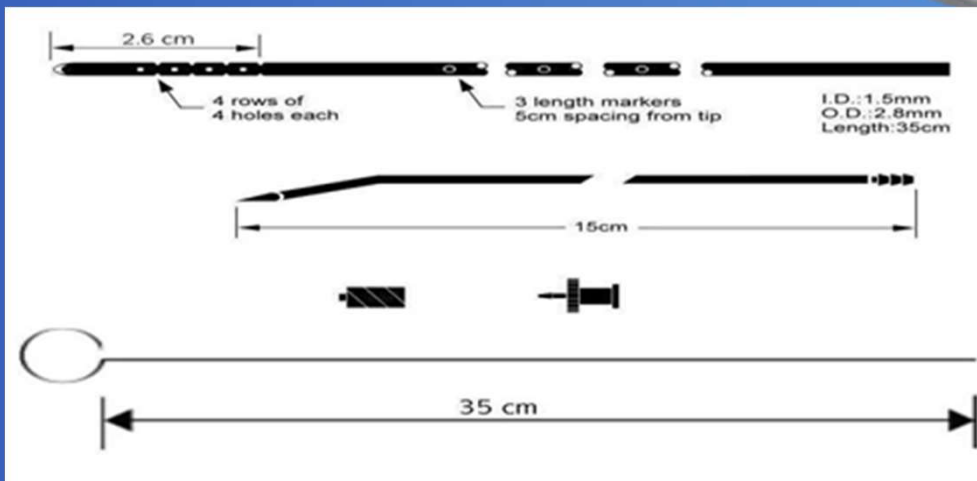
Length: 35cm

1 ea. **Luer Lock Cap**

1 ea. **Female Luer Adapter**

1 ea. **Stainless Steel Stylet(35cm)**

1 ea. **Trocar(15cm)**



BMI® Medical

External Drainage Monitoring System 06128

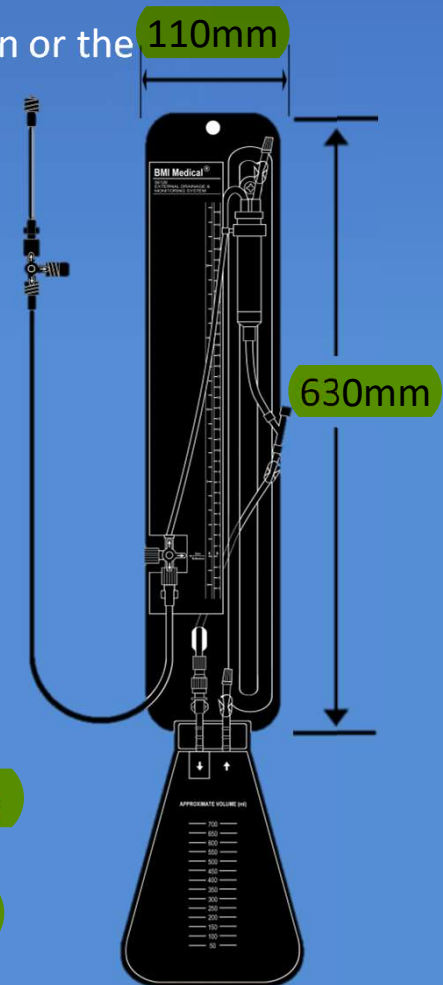
Draining cerebrospinal fluid(CSF) from the lateral ventricles of the brain or the lumbar subarachnoid space.

Monitoring (CSF) pressure and flow rate from the lateral ventricles of the brain or the lumbar subarachnoid space.

Reduce intracranial pressure(ICP)

Features

1. **Hydrophobic filter** prevents passage of bacteria and eliminates negative pressure artifacts.
2. **Two convenient injection sites** allow sampling and intraventricular medication.
3. **Sliding chamber allows accurate flow monitoring**
4. **Locking bracket is incorporated in the chamber for quick, accurate pressure head setting.**
5. Large capacity drainage bag (**700ml**) may be disconnected for replacement or emptied for re-use.
6. **Pressure monitoring can be performed at either the mounting panel or patient line port.**
7. **System panel is adjustable by using either the locking cord or mounting bracket.**



BMI® Medical

Wellong Instruments Co., Ltd.

E-mail : cctco@ms35.hinet.net

Phone Number : +886-2-25719829 · +886-2-25413710

Fax Number : +886-2-25627884

Address : 2F., No.63, Linsen N. Rd., Zhongshan Dist.,
Taipei City 104, Taiwan (R.O.C.)