

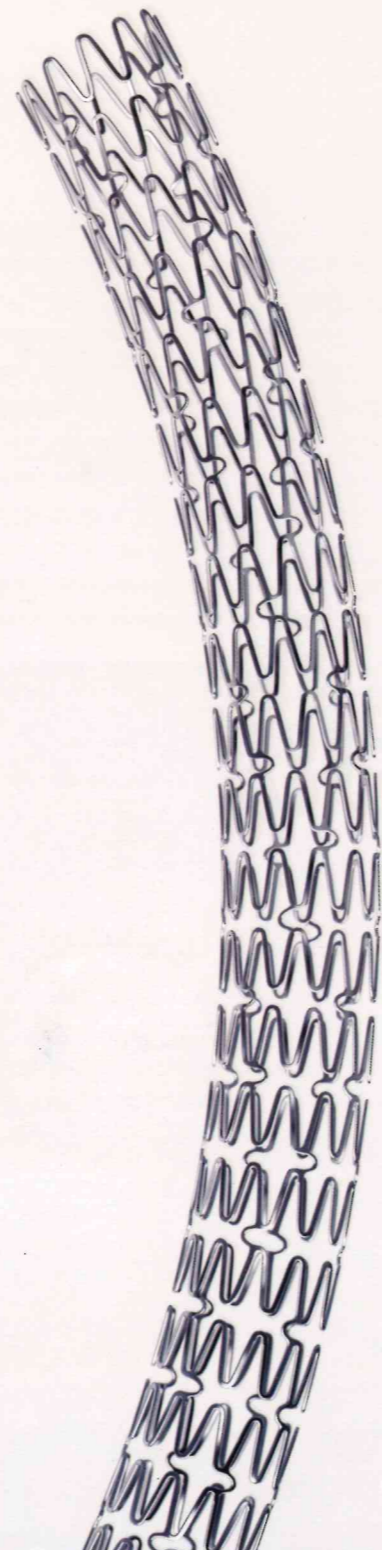
CATALOG NO :

| Length/Dia | 2.25mm | 2.50mm | 2.75mm | 3.00mm | 3.50mm | 4.00mm |
|------------|---------|---------|---------|---------|---------|---------|
| 07mm | FR 0722 | FR 0725 | FR 0727 | FR 0730 | FR 0735 | FR 0740 |
| 10mm | FR 1022 | FR 1025 | FR 1027 | FR 1030 | FR 1035 | FR 1040 |
| 13mm | FR 1322 | FR 1325 | FR 1327 | FR 1330 | FR 1335 | FR 1340 |
| 15mm | FR 1522 | FR 1525 | FR 1527 | FR 1530 | FR 1535 | FR 1540 |
| 17mm | FR 1722 | FR 1725 | FR 1727 | FR 1730 | FR 1735 | FR 1740 |
| 20mm | FR 2022 | FR 2025 | FR 2027 | FR 2030 | FR 2035 | FR 2040 |
| 24mm | FR 2422 | FR 2425 | FR 2427 | FR 2430 | FR 2435 | FR 2440 |
| 28mm | FR 2822 | FR 2825 | FR 2827 | FR 2830 | FR 2835 | FR 2840 |
| 33mm | FR 3322 | FR 3325 | FR 3327 | FR 3330 | FR 3335 | FR 3340 |
| 38mm | FR 3822 | FR 3825 | FR 3827 | FR 3830 | FR3835 | FR 3840 |
| 42mm | FR 4222 | FR 4225 | FR 4227 | FR 4230 | Fr4235 | FR 4240 |
| 45mm | FR 4522 | FR 4525 | FR 4527 | FR 4530 | FR4535 | FR 4540 |

COMPLIANCE CHART :

| Pressure (bar) | Diameters | | | | | | |
|----------------|-----------|--------|--------|--------|--------|--------|--------|
| | 2.25mm | 2.50mm | 2.75mm | 3.00mm | 3.50mm | 4.00mm | 4.50mm |
| 4 | 1.98 | 2.25 | 2.48 | 2.74 | 3.25 | 3.72 | 4.37 |
| 6 | 2.13 | 2.39 | 2.62 | 2.88 | 3.35 | 3.85 | 4.42 |
| 8 | 2.25 | 2.50 | 2.75 | 3.00 | 3.50 | 4.00 | 4.50 |
| 9 | 2.28 | 2.54 | 2.78 | 3.03 | 3.54 | 4.07 | 4.55 |
| 10 | 2.31 | 2.57 | 2.82 | 3.10 | 3.57 | 4.14 | 4.63 |
| 11 | 2.33 | 2.60 | 2.86 | 3.13 | 3.6 | 4.19 | 4.69 |
| 12 | 2.35 | 2.62 | 2.89 | 3.17 | 3.63 | 4.25 | 4.75 |
| 13 | 2.37 | 2.64 | 2.91 | 3.19 | 3.66 | 4.28 | 4.81 |
| 14 | 2.39 | 2.66 | 2.93 | 3.21 | 3.70 | 4.32 | 4.86 |
| 15 | 2.41 | 2.68 | 2.95 | 3.23 | 3.74 | 4.35 | 4.91 |
| 16 | 2.43 | 2.70 | 2.97 | 3.25 | 3.78 | 4.38 | 4.96 |
| 17 | 2.45 | 2.73 | 3.00 | 3.28 | 3.81 | 4.40 | 5.01 |
| 18 | 2.48 | 2.76 | 3.03 | 3.31 | 3.84 | 4.42 | 5.06 |

Nominal Pressure
 Rated Burst Pressure



COBALT CHROMIUM RAPAMYCIN ELUTING CORONARY STENT SYSTEM



International Head Quarter - Sahajanand Laser Technology Ltd.
 E-30, G.I.D.C., Electronic Estate, Sector-26,
 Gandhinagar - 382 028. (Gujarat) India.
 Tel. : +91 - 79 - 2324 1379 / 80,
 Fax : +91 - 79 - 2324 1465
 Email : mkt@SLTL.com
Log on to :
 www.sltmlmedical.com
 www.SLTL.com

India Marketing - Sahajanand Laser Technology Ltd.
 41, Newyork Tower-A, Nr. Thaltej Cross Road,
 S.G. Highway, Ahmedabad - 380 054. Gujarat, India.
 Tel.: +91-79-2685 4537 / 38 . Fax: +91-79-2685 4539
Manufacturing - Sahajanand Laser Technology Ltd.
 A-8, G.I.D.C., Electronic Estate, Sector-25,
 Gandhinagar - 382 016. (Gujarat) India.
 Tel.: +91 - 79 - 2328 7462, Fax: +91 - 79 - 2324 1465

FR/CAT/02



CAUTION: Indication, Contraindication, Warnings, Precaution and other instruction for use can be found in the product labeling supplied with each device.
 FlexyRap is registered trademark of Sahajanand Laser Technology Ltd. © 2018 SLTL. All rights reserved.



flexyrap



SAFER. STRONGER. SUBTLE.

The FlexyRap Cobalt Chromium Rapamycin Eluting Coronary Stent System offers an U.S. Patented stent design, engineered for excellent deliverability, radial strength and vessel scaffolding.

The FlexyRap Cobalt Chromium Rapamycin Eluting Coronary Stent System is proven to be safe and effective in a prospective, multi-center, observational study in a real-world, all-comers CAD patients including those with high-risk and very complex lesions, indicating low rates of MACE over 2-year follow-up period*.

CLINICAL OUTCOME

REFLECTION (prospective, multi-center, observational) Study

| Outcomes | 6 Months | 9 Months | 12 Months | 24 Months |
|---------------------------------|----------|----------|-----------|-----------|
| MACE, n (%) | 0 (0.0%) | 2 (2.1%) | 6 (6.2%) | 6 (6.2%) |
| All cause of death, n (%) | 0 (0.0%) | 0 (0.0%) | 0 (0.0%) | 0 (0.0%) |
| Cardiac, n (%) | 0 (0.0%) | 0 (0.0%) | 0 (0.0%) | 0 (0.0%) |
| Non-Cardiac, n (%) | 0 (0.0%) | 0 (0.0%) | 0 (0.0%) | 0 (0.0%) |
| MI, n (%) | 0 (0.0%) | 0 (0.0%) | 1 (1.0%) | 1 (1.0%) |
| Clinically indicated TLR, n (%) | 1 (1.0%) | 2 (2.1%) | 5 (5.2%) | 5 (5.2%) |

*Data on file, SLTL

SPECIFICATIONS :

| | | | |
|--|--------------------------------------|--|---|
| Stent material L605CoCr | Strut Thickness 60μ | Mean Recoil 2.8% | Mean Foreshortening 1% |
| Crossing Profile 0.95mm (3.00mm Stent Diameter) | Balloon Overhang <0.5mm | Usable Catheter Length 145cm | Guidewire Compatibility 0.014" |
| | | | Guide catheter Compatibility 5F |

Kink Resistance Catheter Shaft for better Pushability

Pt-Ir Radioopaque markers for better Visibility

Tapered 4-5mm tip for distal stability and guidewire support

Biodegradable Polymer with excellent biocompatibility

Sustained Rapamycin (Sirolimus) release over 28 days for therapeutic efficacy

Semi Open (Hybrid) U.S. Patented Stent Design

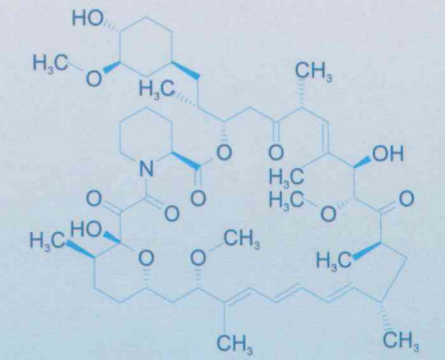
Superior Stent mechanics through strong cobalt chromium alloy

Better fatigue and corrosion resistance performance

Coating thickness less than 6μ

Growth of 8% from nominal pressure to RBP allowing complete deployment and good wall apposition

Ultrasmooth Electropolished finishing



Drug : Rapamycin (Sirolimus)
Dose: 1μg/mm²