



...reducing avoidable harms

Negative Pressure Wound Therapy

**VENTURI® NPWT Systems**

...advanced wound care



# Consistently delivering exceptional clinical outcomes

1,2,3,4

JRI Avanti increased granulation to 95%; reduced weekly dressing 79%; saved 59% in direct costs 5.5 hours of nursing time.<sup>1</sup>

The ease of using VENTURI Compact allowed the patient to move from secondary to primary care which significantly increased their quality of life.<sup>2</sup>

VENTURI Mino for multiple patients highly cost effective. In one year result in a direct cost saving of £4,940 compared to a NPWT system.<sup>3</sup>

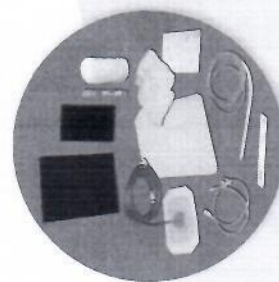
Clinical outcomes for the VENTURI Mino NPWT system were in line with expectation for mini NPWT systems used in a burns and plastics department. In addition the Mino resulted in a 66.3% cost saving.<sup>4</sup>

”



**INTERMITTENT NPWT**  
Compact allows clinicians intermittent NPWT to suit needs.  
Patients with continuous NPWT

**NEGATIVE PRESSURE RANGE -10mmHg TO -180mmHg**  
All VENTURI systems default to -80mmHg as standard.  
VENTURI Avanti and VENTURI Compact offer negative pressure range from -10mmHg to -180mmHg. This allows clinicians to tailor the therapy to suit individual patient requirements.  
VENTURI Mino offers either -80mmHg or -120mmHg.



**GAUZE OR FOAM WOUND CARE SETS**  
All VENTURI systems are designed for use with either gauze or foam wound care sets. This flexibility allows clinicians to use the most appropriate wound dressing for their patients.



**MAINS OR BATTERY OPERATED**  
All VENTURI systems use integrated batteries and switch seamlessly between mains or battery power without interrupting therapy.  
A fully charged system operates for a minimum of 24 hours, providing patients with greater independence and freedom.



**INTUITIVE AND EASY TO USE**  
The intuitive, easy to use pump unit simplifies product set up, operation and training and reduces the potential for user error during treatment.



**AUDIBLE AND VISUAL ALARMS**  
A full range of audible and visual alarms cover all common fault conditions across the VENTURI range. These include: low vacuum, tube constriction, system tilt, full canister, low battery and no canister.



**INTEGRAL CANISTER**  
All VENTURI systems feature a flush-fitting drainage canister incorporating eudaimon solidifying granules and hydrophobic and carbon bacterial filters to prevent leakage and odour.



The VENTURI Mino weighs only 250g with a 150ml capacity canister and provides discreet, lifestyle compatible NPWT while 'on the move'.



The VENTURI Compact offers lightweight, portable NPWT with a 300ml capacity canister. Suitable for most complex wounds including pressure ulcers and complicated, post-operative surgical wounds.



The VENTURI Avanti offers large 600ml or 1200ml capacity canisters. Ideal for large, complex, non-healing wounds such as full thickness (Category 3 and Category 4) pressure ulcers and dehiscent surgical wounds where exudate management is problematic.

All VENTURI products are intuitive, simple to use, cost effective and consistently deliver exceptional clinical outcomes. Choose from our range of systems depending on your patients' requirements.





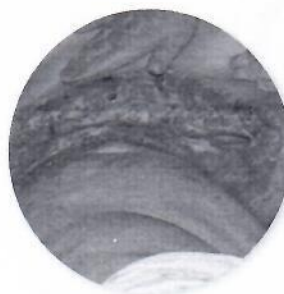
# Positive product feedback

## ► Patient quality of life and independence:

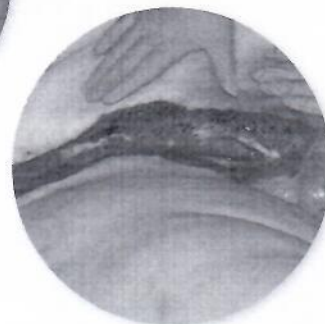
- The VENTURI Mino was discreet and extremely portable, enabling the patient to remain fully mobile and independent throughout their treatment.<sup>5</sup>
- *"I live alone and use a wheelchair and because of the VENTURI Mino size it was unobtrusive and allowed me to go out and about without drawing unwanted attention to myself."*<sup>6</sup>
- Using portable gauze based NPWT (VENTURI Compact) enabled the patient to return home to enjoy time with family and friends.<sup>2</sup>
- The VENTURI Avanti enhanced patient quality of life by: (i) reducing disruption from dressing changes; (ii) reduced leaking of exudate; (iii) increasing independence due to the ability to mobilise safely and with confidence.<sup>1</sup>

## ► Staff feedback:

- Staff consistently report that the VENTURI Avanti and VENTURI Compact are reliable, clinically effective, easy to use and simple for patients to manage.<sup>7</sup>
- Overall assessment of the VENTURI Mino was very positive in terms of its clinical performance and ease of use.<sup>6</sup>
- The VENTURI Mino system is consistently reported as easy to use with dressing application and removal also very simple and easy to manage.<sup>3,4,5</sup>

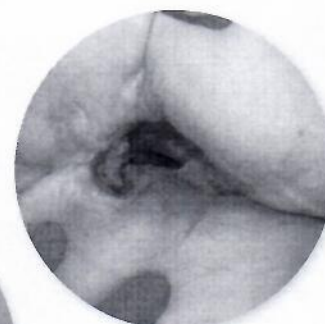


Wound pre and post treatment with VENTURI Avanti<sup>1</sup>



# Positive clinical outcomes

Wound pre and post treatment with VENTURI Compact<sup>2</sup>



## REFERENCES

- 1 Harvey C. Using the VENTURI AVANTI Negative Pressure Wound Therapy System to successfully manage a complex case of Necrotising Fasciitis. European Wound Management Association Conference, London 2015. Poster Presentation.
- 2 Grimshaw K. Offsetting benefits vs. risks: using Negative Pressure Wound Therapy to help improve the quality of life for a terminally ill patient with a very complex wound. European Wound Management Association Conference, London 2015. Poster Presentation.
- 3 Bullock L. Negative pressure wound therapy treatment costs – a comparative evaluation. Wounds UK Conference, Harrogate 2015. Poster Presentation.
- 4 Hall J. A Treatment Cost Comparison of Two Mini Negative Pressure Wound Therapy Systems in a Burns and Plastics Department. Wounds UK Conference, Harrogate 2015. Poster Presentation.
- 5 Chadwick P. Use of a New Portable Lightweight Negative Pressure Wound Therapy System in a Complex Diabetic Foot Ulcer. Wounds UK Conference, Harrogate 2015. Poster Presentation.
- 6 Ransden S. Initial experiences of using a new, lightweight, highly portable NPWT system to expedite wound healing in two primary care patients. European Wound Management Association Conference, London 2015. Poster Presentation.
- 7 McMath L. Setting up an effective Negative Pressure Wound Therapy service across both primary and secondary care. European Wound Management Association Conference, London 2015. Poster Presentation.

VENTURI Avanti, VENTURI Compact and VENTURI Mino are Registered Trade Marks of Talley Group Limited.

Talley manufacture products to comply with National and International safety standards and are certified to ISO 13485 and Directive 93/42/EEC. Every care has been taken to ensure that the information contained in this brochure was correct at the time of going to press. However, Talley reserve the right to modify the specification of any product without prior notice in line with a policy of continual product development. Our standard terms and conditions apply. © Talley Group Limited 2007 - 2018. All rights reserved.

## Contraindications / Precautions

The use of the VENTURI NPWT systems is contraindicated in the presence of: untreated osteomyelitis, malignancy (except palliative care), exposed blood vessels, organs or major structures, unexplored fistula. Exercise precautions with regard to: patients on anti-coagulant therapy, patients who have difficult hemostasis / actively bleeding, untreated malnutrition, non-compliant / unsuitable patients, wounds that are necrotic / eschar present.



**Talley Group Limited**  
Premier Way, Abbey Park Industrial Estate  
Romsey, Hampshire, SO51 9DQ England  
TEL: +44(0)1794 503500 FAX: +44(0)1794 503555  
EMAIL: sales@talleygroup.com

[www.talleygroup.com](http://www.talleygroup.com)





# Technical Specifications



...closer to the patient

## Negative Pressure Wound Therapy | VENTURI® Compact

Lightweight mobile NPWT, can be used with both gauze and foam. Controlled negative pressure to assist and accelerate wound healing. Simple to use and offering a seamless choice of either mains or battery operation, the VENTURI Compact features a choice of therapy modes, adjustable vacuum levels, a range of operation status and fault indicators, and is supplied with a 300ml secure and discreet integral canister.

Power Unit	
Construction	Flame retardant ABS
Dimensions	161mm x 155mm x 90mm
Weight	1.0kg
DC Input Voltage	12V Nominal
Vacuum Application	Continuous (default therapy) or intermittent
Pressure Range	-10mmHg to -180mmHg

Canister	
Construction	ABS Trans smoked grey, textured (includes 1 x 8g dissolvable sachet of desiccant)
Capacity	300ml
Dimensions	156mm x 163mm x 32mm

Power Adapter	
Mains Adapter Type	FW7556M/12 (supplied)
Input	100-240V / 50-60Hz / 400mA
Output	12V DC / 1.5A
Cable Length	4 metres
Part Number	34-26-05-104



### Contraindications / Precautions

The use of the VENTURI® NPWT systems is contraindicated in the presence of: untreated osteomyelitis, malignancy (except palliative care), exposed blood vessels, organs or major structures, unexplored fistula. Exercise precautions with regard to: patients on anti-coagulant therapy, patients who have difficult hemostasis / actively bleeding, untreated malnutrition, non-compliant / unsuitable patients, wounds that are necrotic / eschar present.

The above mains adapters are considered part of the ME equipment. 12V vehicle power adapter is available as an optional accessory. The VENTURI® Compact power units must only be used with the specific external power adapters as supplied by Talley.



Talley manufacture products to comply with National and International safety standards and are certified to ISO9001, ISO13485 and Directive 93/42/EEC. Every care has been taken to ensure that the information contained in this brochure was correct at the time of going to press. However, Talley reserve the right to modify the specification of any product without prior notice in line with a policy of continual product development. Our standard terms and conditions apply. © Talley Group Limited 2016. All rights reserved.



[www.talleygroup.com](http://www.talleygroup.com)

04/2016



## VENTURI Gauze Wound Care Set - Flat Drain (Standard; Large)

Sets include: AMD gauze; 10mm flat silicone drain; Transparent adhesive film dressing; Normal saline; adhesive gel patch; Connection tubing with clamp; Ruler; Instructions for Use

	x1	Box of 10
Standard:	97-30-41-100	97-30-41-104
Large:	97-30-41-101	97-30-41-105

Large wound care set (gauze, flat drain) shown

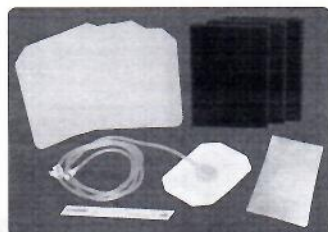


## VENTURI Gauze Wound Care Set - Portal Drain (Standard; Large; Abdominal\*)

Sets include: AMD gauze; Portal drain; Transparent adhesive film dressing; Normal saline; Ruler; Instructions for Use

	x1	Box of 10
Standard:	97-30-42-102	97-30-42-106
Large:	97-30-42-109	97-30-42-110
Abdominal:	97-30-42-125	97-30-42-126

Standard wound care set (gauze, portal drain) shown



## VENTURI Foam Wound Care Set - Portal Drain (Small; Standard; Large/Abdominal\*)

Sets include: Foam pad; Portal drain; Transparent adhesive film dressing; Ruler; Instructions for Use

	x1	Box of 10
Small:	97-30-42-104	97-30-42-108
Standard:	97-30-42-101	97-30-42-105
Large:	97-30-42-103	97-30-42-107
Large/Abdominal:	97-30-42-111	97-30-42-112

Large/Abdominal wound care set (foam, portal drain) shown



## VENTURI MiNO Gauze Wound Care Set (one size)

Set includes: AMD gauze; Portal drain; Transparent adhesive film dressing; Normal saline; Ruler; Instructions for Use

	x1	Box of 10
(one size):	97-30-42-114	97-30-42-117



## VENTURI MiNO Slim Foam Wound Care Set (one size)

Set includes: Slim foam pad; Portal drain; Transparent adhesive film dressing; Ruler; Instructions for Use

	x1	Box of 10
(one size):	97-30-42-115	97-30-42-118

\*Abdominal WCSs include TELFA wound contact dressing





Contents and Technical Specification of VENTURI® Wound Care Sets (WCS) (Canisters are available separately)	Gauze WCS - Flat Drain, Standard	Gauze WCS - Flat Drain, Large	Gauze WCS - Portal Drain, Standard	Gauze WCS - Portal Drain, Large	Gauze WCS - Portal Drain, Abdominal	Foam WCS - Small	Foam WCS - Standard	Foam WCS - Large	Foam WCS - Large/Abdominal	MINO Gauze WCS	MINO Slim Foam WCS
Portal Drain			1	1	1	1	1	1	1	1	1
Flat Drain	1	1									
Gauze Square (150mm x 170mm ) pack of 2	1		1							1	
AMD Gauze Roll (114mm x 3.7m) AMD		1		1	2						
Foam Pad (Small) (100mm x 150mm x 30mm)						1					
Foam Pad (Standard) (200mm x 150mm x 30mm)							1	2	3		
Foam Pad (Slim) (100mm x 150mm x 15mm)											1
Transparent Dressing (200mm x 200mm)	2	3	2	3	4	2	2	4	4	1	1
Normal Saline (20ml)	1	2	1	2	4					1	
Gel Patch (100mm x 100mm)	1	1									
Connection Tubing with Guide	1	1									
Telfa Clear Contact Layer					1				1		
Measuring Tape	1	1	1	1	1	1	1	1	1	1	1



**Talley Group Limited**  
Premier Way, Abbey Park Industrial Estate  
Romsey, Hampshire, SO51 9DQ England  
TEL: +44(0)1794 503500 FAX: +44(0)1794 503555  
EMAIL: sales@talleygroup.com

[www.talleygroup.com](http://www.talleygroup.com)



6102/20

