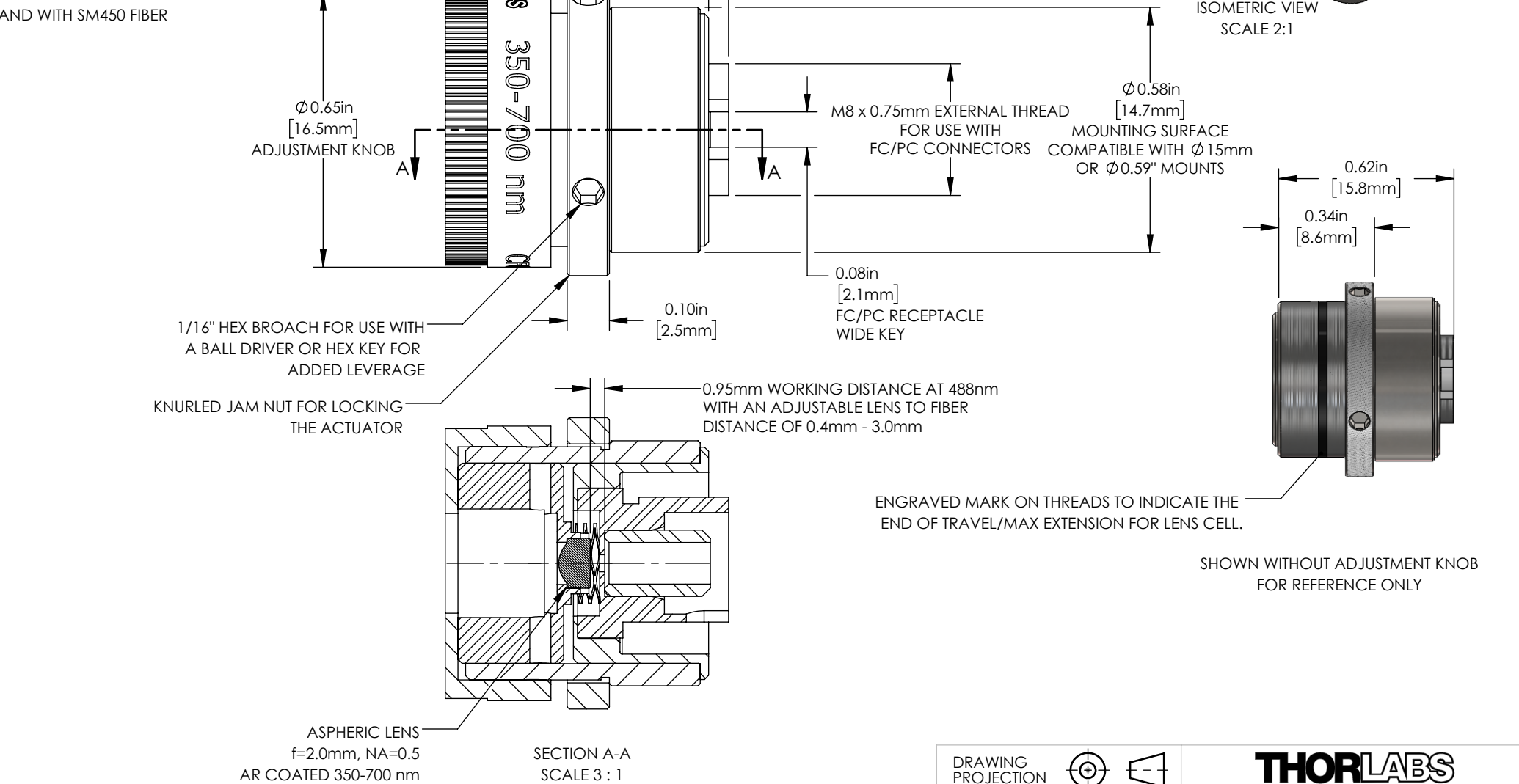


THEORETICAL 1/e <sup>2</sup> OUTPUT BEAM DIAMETER*	0.36mm
THEORETICAL FULL ANGLE BEAM DIVERGENCE*	0.100°
AR COATING	Ravg ≤ 0.5% FROM 350-700nm
INPUT MFD	3.5µm
POINTING STABILITY DURING COLLIMATION	<15 mrad

\*CALCULATED AT 488nm WAVELENGTH  
AND WITH SM450 FIBER



NOTE:  
ALL COLLIMATORS ARE ROUGH ALIGNED AT 473nm  
Ø2.0mm LENS CLEAR APERTURE

INCLUDED BUT NOT SHOWN:  
RUBBER DUST CAP

FOR INFORMATION ONLY  
NOT FOR MANUFACTURING PURPOSES

DRAWING PROJECTION			<div>THORLABS</div> <div>www.thorlabs.com</div>	
	NAME	DATE		
DRAWN	CAL	05/AUG/19	FC/PC ADJUSTABLE COLLIMATOR, f = 2.0mm, 350-700 nm	
APPROVAL	PH	20/DEC/21	MATERIAL	REV
COPYRIGHT © 2019 BY THORLABS			N/A	A
VALUES IN PARENTHESIS ARE CALCULATED AND MAY CONTAIN ROUND OFF ERRORS			ITEM #	APPROX WEIGHT
			CFC2-A	0.21 kg