



English catalog / published 2020.

Verified with:
ISO 9001 certificates
Serbian National approvals
and Hygienic reports



Contact
address:

Ljubomira Nikolića 12
18000 Niš
Serbia



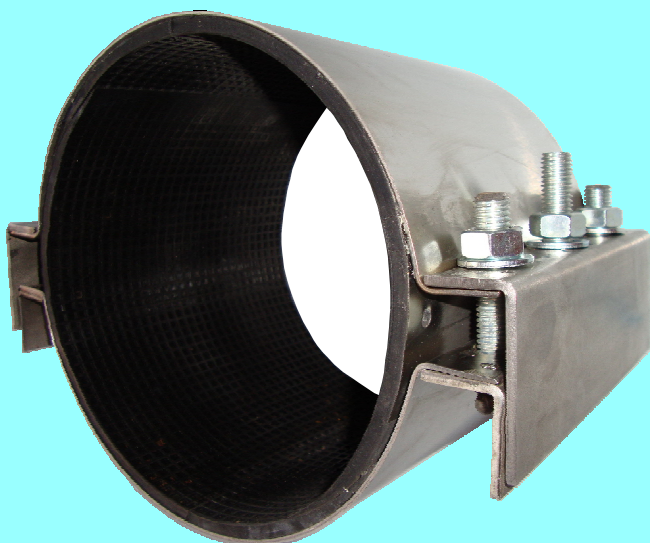
www.vitreks.com
info@vitreks.com



+381 18 237 142
+381 18 228 551
+381 64 1164 150

www.vitreks.com

PIPE REPAIR CLAMP "ATLANTIC 2" - DOUBLE CLAMP



Pipe repair clamps "Atlantic" are used for permanent repair of broken and damaged pipes, providing a fast, economical means for repairing full circumferential breaks, holes, cracks and other types of damage on cast iron, steel, PVC, PE, asbestos cement, ductile iron, and other types of pipe.

"Atlantic" clamps are manufactured in diameters from DN 50 to DN 1200 in a choice of clamp lengths from corrosion resistant stainless steel type 304.

(Optional 316).

Double Clamp consists of two parts and has a pipe diameter range of 20-22 mm.

The range of clamps starts at 80 mm up to 800 mm.

Available lengths: 200, 210, 250, 300, 355, and 400 mm.

Longer clamps are available on request.

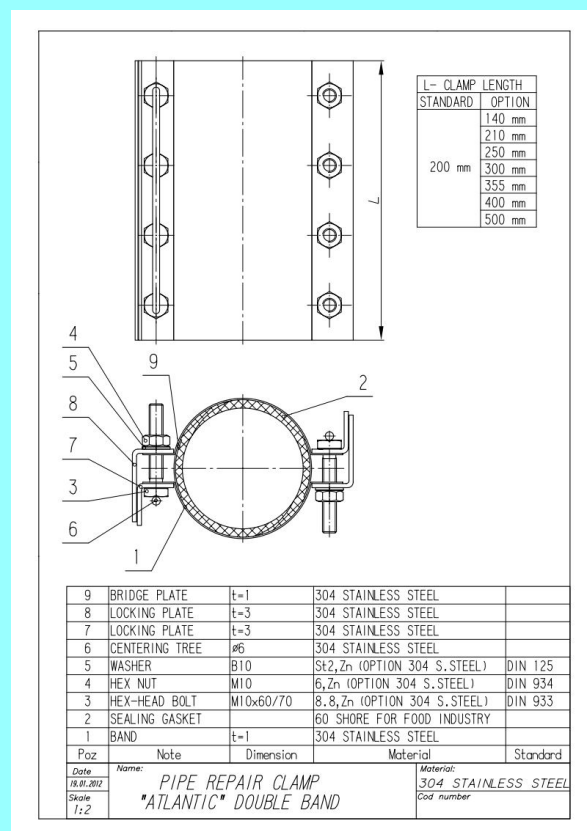
Available sizes: Pipe repair clamps "Atlantic 2" are available in many different diameters from DN 50-DN 800.

Maximum working pressure:

The maximum working pressure of the repair clamps depends on the type of pipes, dimensions and condition of pipe, the length of clamp, the type and size of the damage, as well as the conditions of servicing. In general, the allowable working pressure increases as the diameter decreases, so that the pipes up to DN 500 have working pressure of 16 bar, and pipes over DN 550 can have pressure of 10 bar.

Material: Stainless steel. AISI 304. Bolts and nuts – Stainless steel A2.

Nuts additionally protected with double Teflon coating to prevent friction.



Atlantik



Ljubomira Nikolića 12
18000 Niš, Serbia



www.vitreks.com
info@vitreks.com



+381 18 237 142
+381 18 228 551
+381 64 1164 150

PIPE REPAIR CLAMP "ATLANTIC 2" - DOUBLE CLAMP

Features

- Full circle repair clamp
- Available for most pipe types and sizes
- Can be used to repair pipe or joint pipe ends.
- Able to adapt to pipe irregularities or ovality.
- Can be manufactured to odd size pipe ODs.
- Under most circumstances, the clamp can be installed without releasing the pressure of the pipe.
- Each clamp fits a number of pipe diameters.
- Original clamp design allows application onto high pressure pipelines.
- Can be installed quickly and easily under water.
- Lightweight and easy to handle.
- Simple to install.
- Minimum downtime to affected mains.
- One person install the clamp in minutes.
- No need for specific preparation of damaged pipes.
- No special tools required, a simple wrench will do the job.
- Bridge plate is completely vulcanized with rubber gasket.
- A 360° gasket seal provides maximum support and reinforcement.



The bridge plate is vulcanized with gasket to prevent the rubber distortion when tightening clamp, providing an effective seal all around the pipe.



Waffle gasket offers a guaranteed reliable seal even on badly corroded pipes

W P bar	D N	Working range/mm	Length of clamp/mm	W P bar	D N	Working range/mm	Length of clamp/mm
16	D N 80	88-110	300	16	D N 350	365-385	300
16	D N 100	108-128	300	16		376-396	300
16		112-134	300	16		390-410	300
16		120-140	300	16	D N 400	404-424	300
16	D N 125	133-155	300	16		420-450	300
16		138-160	300	16		440-460	300
16	D N 150	158-180	300	16	D N 450	457-477	300
16		168-190	300	16		468-488	300
16	D N 175	190-210	300	16		488-508	300
16		195-217	300	10	D N 500	500-520	300
16	D N 200	210-230	300	10		520-540	300
16		216-238	300	10	D N 550	545-565	300
16		225-246	300	10		568-588	300
16		238-260	300	10		586-606	300
16		251-271	300	10	D N 600	600-620	300
16	D N 250	272-292	300	10		625-645	300
16		295-315	300	10	D N 700	705-725	300
16	D N 300	314-335	300	10		730-750	300
16		322-344	300	10	D N 750	755-775	300
16		334-354	300	10	D N 800	805-825	300
16		340-360	300	10		835-855	300
16	D N 350	348-368	300	10	D N 800	840-860	300

Available lengths: 200, 210, 250, 300, 355, and 400mm. Longer clamps are available on request.

Atlantik



Ljubomira Nikolića 12
18000 Niš, Serbia



www.vitreks.com
info@vitreks.com



+381 18 237 142
+381 18 228 551
+381 64 1164 150