

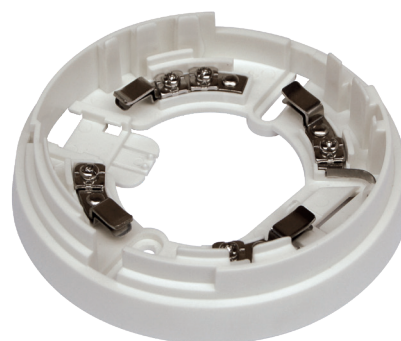
EB0010 EB0020

DETECTOR BASES FOR IRIS AND ENEA DETECTORS



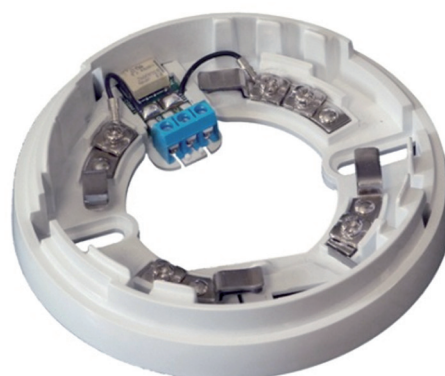
EB0010

Standard bases for the electrical connections of IRIS and ENEA detectors on closed-loop lines (max. 240 ENEA detectors per line) or conventional lines (max. 32 IRIS detectors). Complete with power supply and alarm contacts. Equipped with short-circuit plate which ensures continuity in the event of removal of the detector from the line.



EB0020

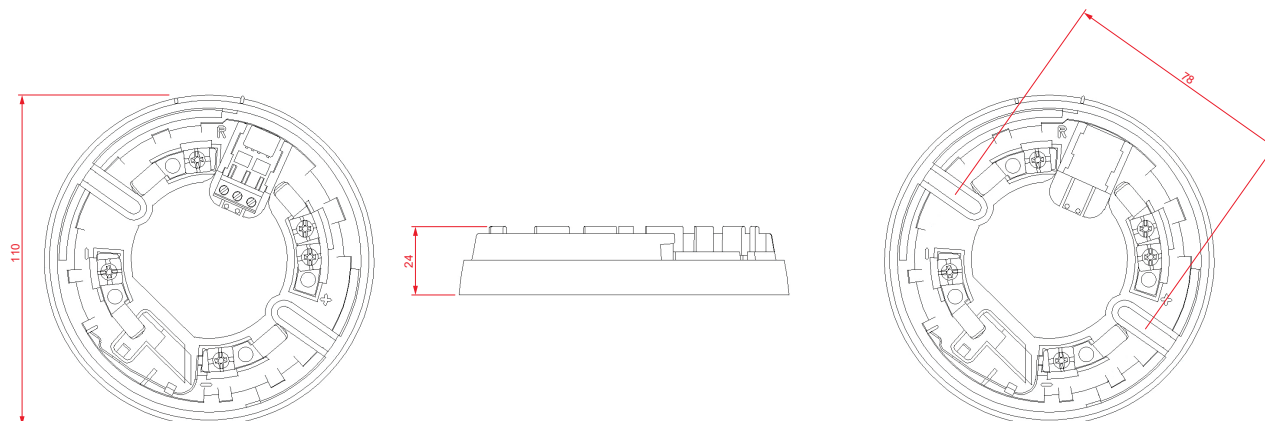
Relay base with programmable relay base (contact NC and NO) controlled directly by the detector microprocessor. If combined with Enea series detectors, the activation logic can be defined independently for each relay base through the Inim programming software. The EB0020 base can be used to connect IRIS detectors to an intrusion control panel.



Technical specifications

Base model	EB0010	EB0020
Contact type	Sliding contact	
Fitting method	Bayonet coupling	
Colour	White	
Enclosure material	Polycarbonate	
Supply voltage	/	from 10 to 30V~
Relay	/	1A 30V~
Operating temperature	/	from -10 to +55 °C
Dimensions	Ø 110mm h 24mm	
Weight	15g	

DIMENSIONS



WIRING DIAGRAMS TABLES

- ITD001** Enea Detectors Wiring Diagram
- ITD002** Iris Detectors Wiring Diagram
- ITD003** Enea Detectors Wiring Diagram
- ITI004** Enea and Iris Detectors Installation
- ITD007** ESB010 Sounder Base Wiring diagram
- ITD008** ESB020 Sounder Beacon Base Wiring diagram
- ITD009** EB020 Relay Base Wiring diagram

ORDER CODES

- EB0010** Mounting base for ENEA and IRIS detectors
- EB0020** Relay base for ENEA and IRIS detectors
- EDX00** Self-addressing analogue detector
- IDX00** Conventional detector
- ESB010** Sounder base for attachment to EB0010 detector base
- ESB020** Sounderbeacon base for attachment to EB0010 base
- BDTB** Adaptor base for PG16 surface-mounted raceways
- FI100** Remote indicator