



Maximum Performance



UDR250 - 285 - 345 & UDD300

FEATURES AND BENEFITS

- Standard galvanized drum with large diameter
- Large door opening for easy loading & unloading
- ECO Version: All dryers are available with reduced kW heating element
- Cloud - based platform to easily monitor your laundry everywhere and at any time
- Self cleaning lint screen
- Combination of radial and axial airflow
 - maximal heat transfer
 - low energy consumption
 - short drying time

OPTIONS

- Stainless steel front
- Reversing drum
- Double door glass and insulation
- Residual moisture control:
 - safe drying of delicate linen
 - humidity detection in %
 - ideal for dry cleaners, fire depts
- WiFi kit - to order through Accessories

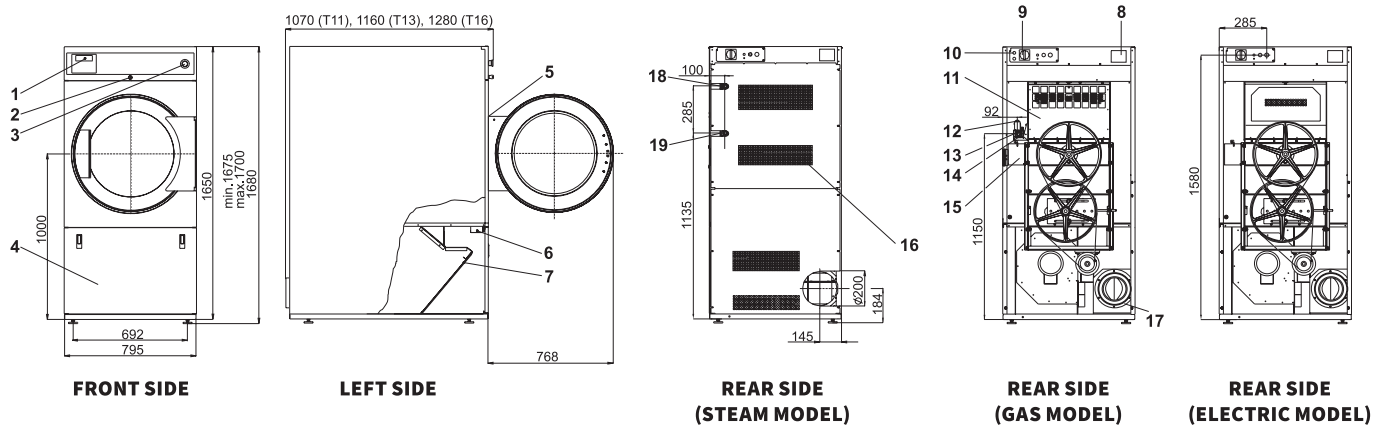
CONTROL

- Easy - To - Use Microprocessor (ECT) - intuitive control with simple selection of 3 programs
- Full Control Programmer (FCT) - fully programmable timer with possibility of residual moisture control

TUMBLE DRYER & STACKED TUMBLE DRYER

TYPE		UDR250	UDR285	UDD300	UDR345
CAPACITY					
Capacity 1:18	kg (lb)	12(26)	16(35)	2x16(2x35)	19(42)
Drum volume	l	250	285	2x300	345
Drum diameter	mm	Ø 760	Ø 760	2xØ 760	Ø 760
AIRFLOW					
	m ³ /h	520	550	1050	600
DRYING AVERAGE					
	l/min.	190	225	2x225	300
MOTORS					
Fan	kW	0,55	0,55	2x0,75	0,55
Drive	kW	0,25	0,25	2x0,25	0,25
GAS HEATING					
Gas connection	NPT	1/2"	1/2"	2x1/2"	1/2"
Electrical connection		3x380 - 415V 50Hz, 3x380 - 415V 60Hz, 3x380 - 415V +N 50Hz, 3x380 - 415V +N 60Hz, 3x208 - 240V 50Hz, 3x208 - 240V 60Hz, 208 - 240V 50Hz 1Ph, 208 - 240V 60Hz 1Ph, 3x440V 60Hz, 3x480V 50Hz, 3x480V 60Hz			
Energy	kW	16,5	19,5	2x19,5	25
	kBTU/h	56,3	66,5	2x66,5	85,3
STEAM HEATING					
Steam connection	NPT	3/4"	3/4"	3/4"	3/4"
Electrical connection		3x380 - 415V 50Hz, 3x380 - 415V 60Hz, 3x208 - 240V 50Hz, 3x208 - 240V 60Hz, 208 - 240V 50Hz 1Ph, 208 - 240V 60Hz 1Ph, 3x440V 60Hz, 3x480V 50Hz, 3x480V 60Hz			
Steam output *	kW	16,5 - 22	19,5 - 27	2x19,5 - 27	22 - 32
Steam pressure	bar	3 - 6/7 - 10	3 - 6/7 - 10	3 - 6/7 - 10	3 - 6/7 - 10
ELECTRICAL HEATING					
Electrical connection		3x380 - 415V 50Hz, 3x380 - 415V 60Hz, 3x208 - 240V 50Hz, 3x208 - 240V 60Hz, 3x440V 60Hz, 3x480V 50Hz, 3x480V 60Hz			
Energy	kW	9 - 13,5	12- 18	2x12 - 2x18	12- 24
EXHAUST					
	mm	200	200	200	200
DIMENSIONS					
H×W×D	mm	1680x795x1070	1680x795x1160	2030x795x1240	1680x795x1280
Net weight	kg	230	250	370	250
TRANSPORT DATA					
Packed H×W×D	mm	1785x855x1100	1785x855x1190	2120x880x1325	1785x855x1310
Gross weight	kg	240	265	385	270

* Steam output is flexible depending on steam pressure, The data concerning dimensions of machines include all extended parts



1. Programmer
2. Emergency stop button
3. Lint screen cover
4. Door lock microswitch
5. Lint cover microswitch
6. Lint screen
7. Name plate

8. Main switch
9. Main power supply
10. Heating chamber
11. Gas valve (G models only)
12. Pressure regulator (G models only)
13. Gas supply (G models only)
14. Airflow switch

15. Suction
16. Exhaust piping

CONSULT YOUR SALES REPRESENTATIVE FOR AVAILABILITY

For the most accurate information, the installation guide should be used for all design and construction purposes. Due to continuous product improvements, design and specifications are subject to change without notice. www.unimac.com

UniMac by Alliance Laundry Systems